



Lower Penitencia Creek Improvements Project

Pre-construction Public Meeting

June 9, 2021

Agenda

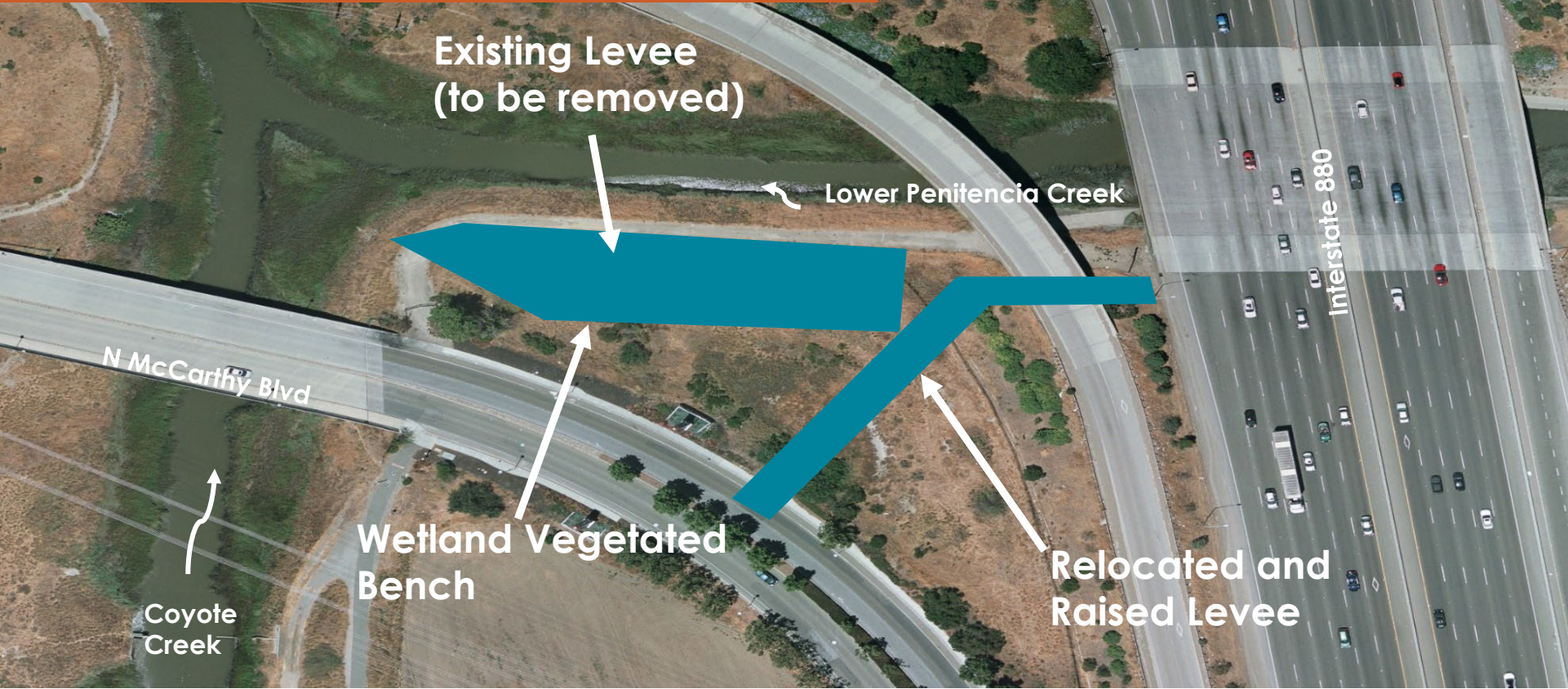
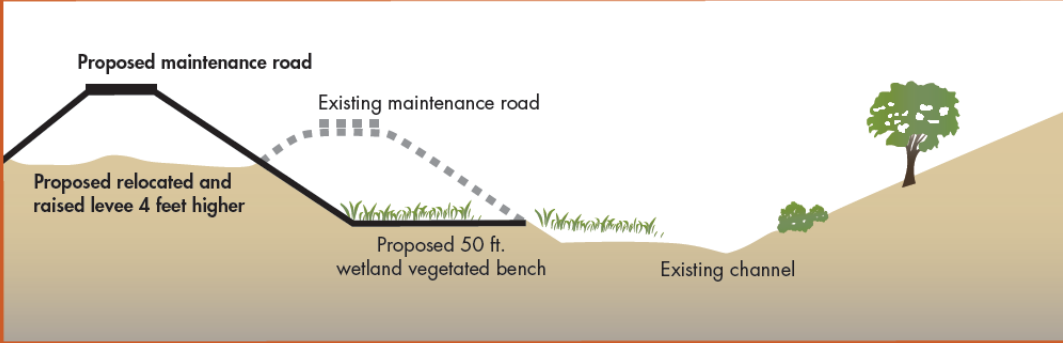
- Background and Project Map
- Project Elements
- What to Expect During Construction
- Contact Information
- Questions



Project Objectives

- Convey the Lower Berryessa Creek one-percent design flow
- Meet required water surface elevations at Coyote Creek and Berryessa Creek confluences
- Minimize the need for seasonal removal of sediment and non-woody vegetation
- Maintain existing Federal Emergency Management Agency (FEMA) accreditation along east levee located between California Circle and Berryessa Creek
- Ensure improvements meet FEMA certification requirements

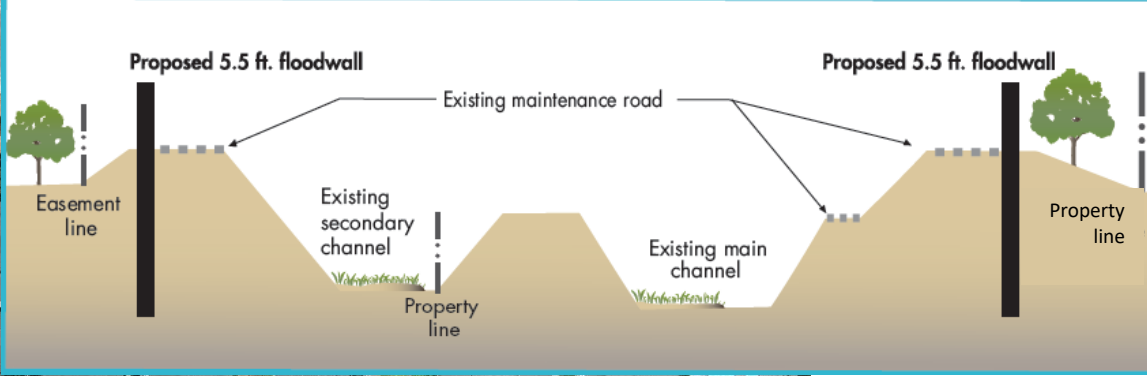
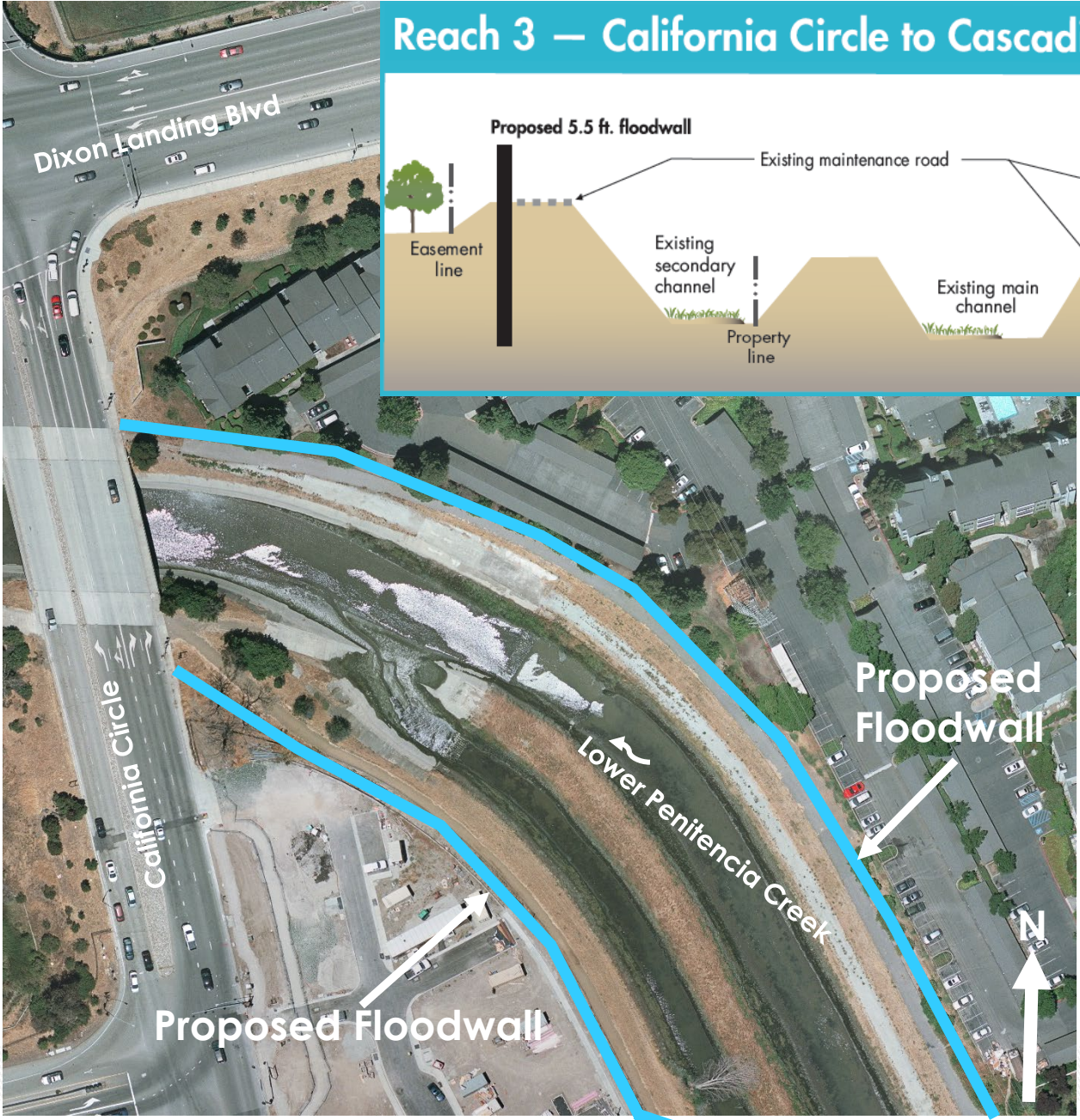
Reach 1 – Coyote Creek to Interstate 880

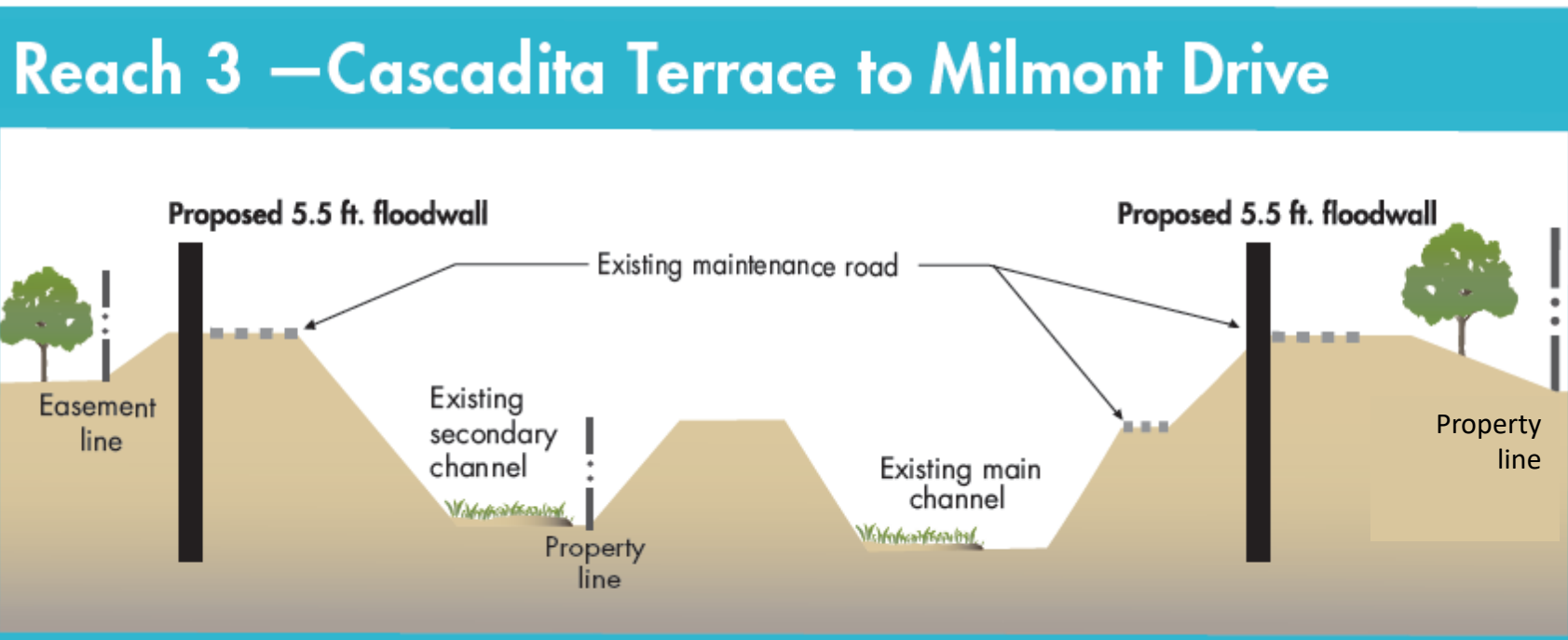


Reach 2 — Interstate 880 to California Circle



Reach 3 — California Circle to Cascadita Terrace





Reach 4 — Milmont Drive to San Andreas Drive



What to expect during construction

10

- Construction equipment
- Hauling/stockpiling of materials
- Best Management Practices will be used (example: dust control)
- Traffic control and trail closure
- Monitoring
- Site security



Construction Schedule

12

- Construction to start summer 2021
- Construction to end winter 2022
- Three-year plant establishment period to follow

Contacting Valley Water and project updates

13

valleywater.org

- Jose Villarreal
Neighborhood Liaison
408-630-2879 or email at jvillarreal@valleywater.org
- Access Valley Water: <https://delivr.com/2yukx>
- Sign-up to receive project updates:
<https://www.valleywater.org/project-updates/lower-penitencia-creek-improvements-project>

Questions





Valley Water

Clean Water • Healthy Environment • Flood Protection