

Lower Penitencia Creek Improvements Project

Community meeting
Thursday, June 5, 2014
Barbara Lee Senior Center



Why are we here?

At tonight's meeting we would like to share with you information about the Lower Penitencia Creek Improvements Project and solicit your feedback on the initial planning level alternatives.

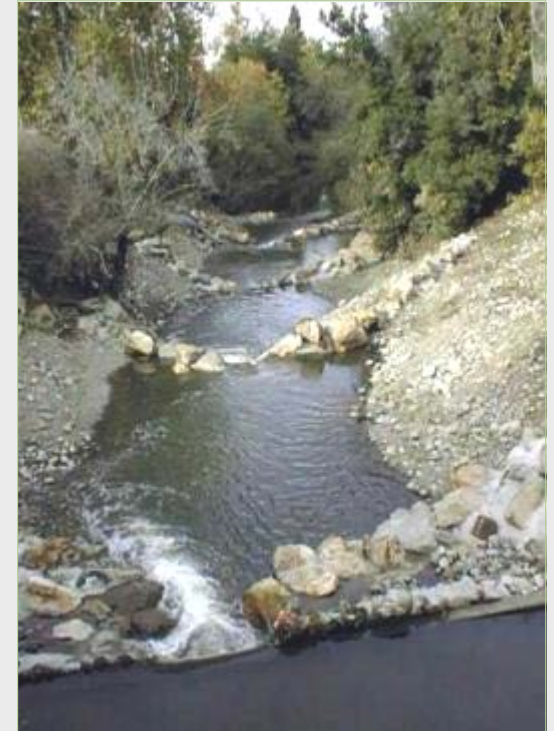
Tonight's meeting agenda

- ▶ **About the water district**
- ▶ About Lower Penitencia Creek
 - ▶ Planning study
 - ▶ Study area and related projects
 - ▶ Why do this study/study limits
 - ▶ Objectives/alternatives
 - ▶ Schedule, next steps
 - ▶ Q & A

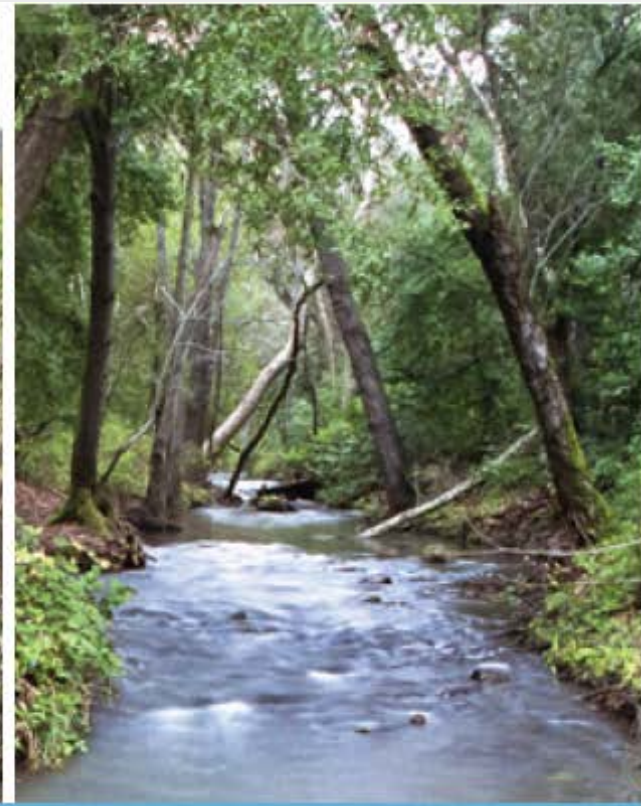
About the water district

Our mission

The mission of the Santa Clara Valley Water District is to provide Silicon Valley safe, clean water for a healthy life, environment, and economy.



Our core services



Clean, Reliable Water

Flood Protection

**Healthy Creeks &
Ecosystems**

We serve

2,000,000 people

15 cities

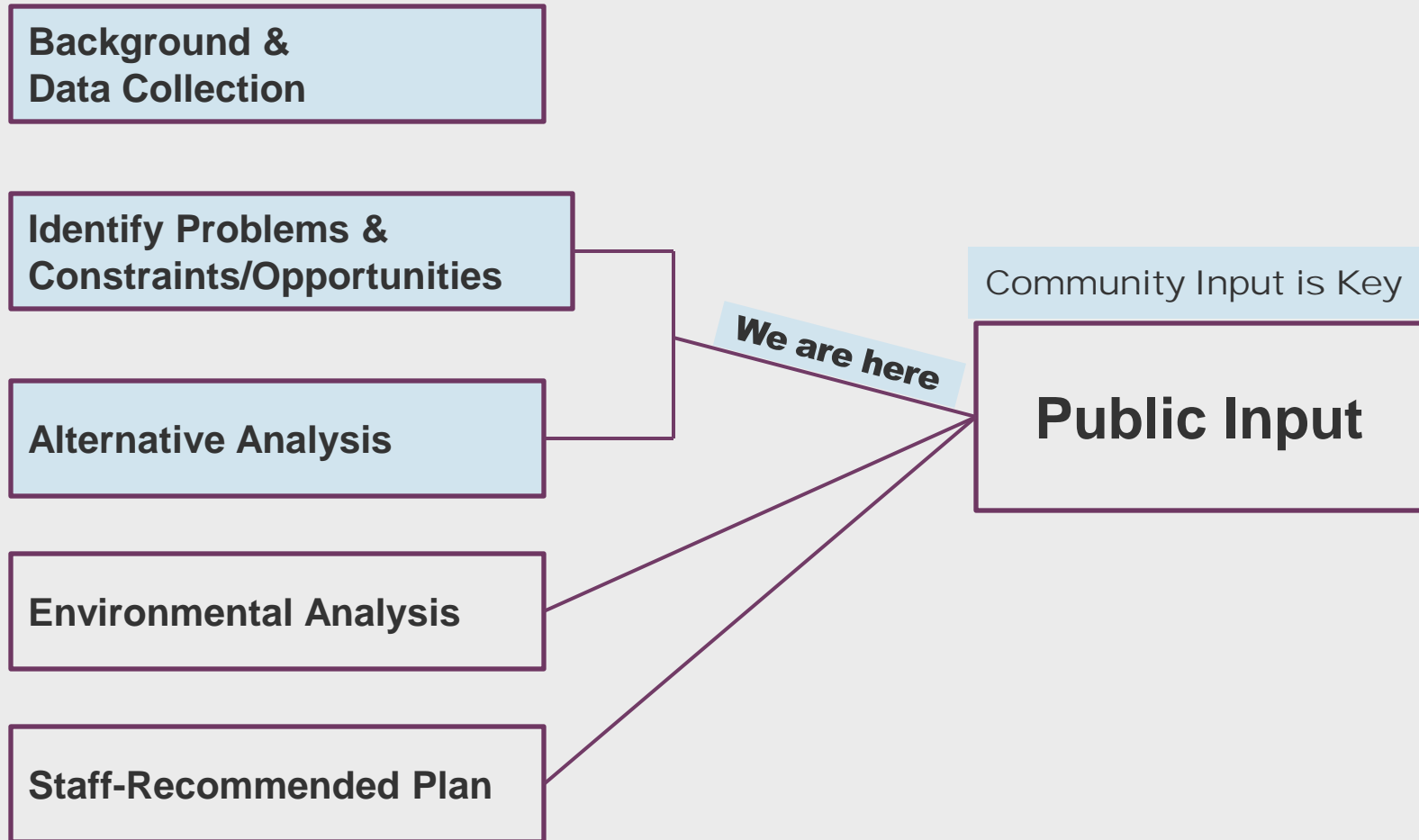
12 water retailers

4,700 direct well owners

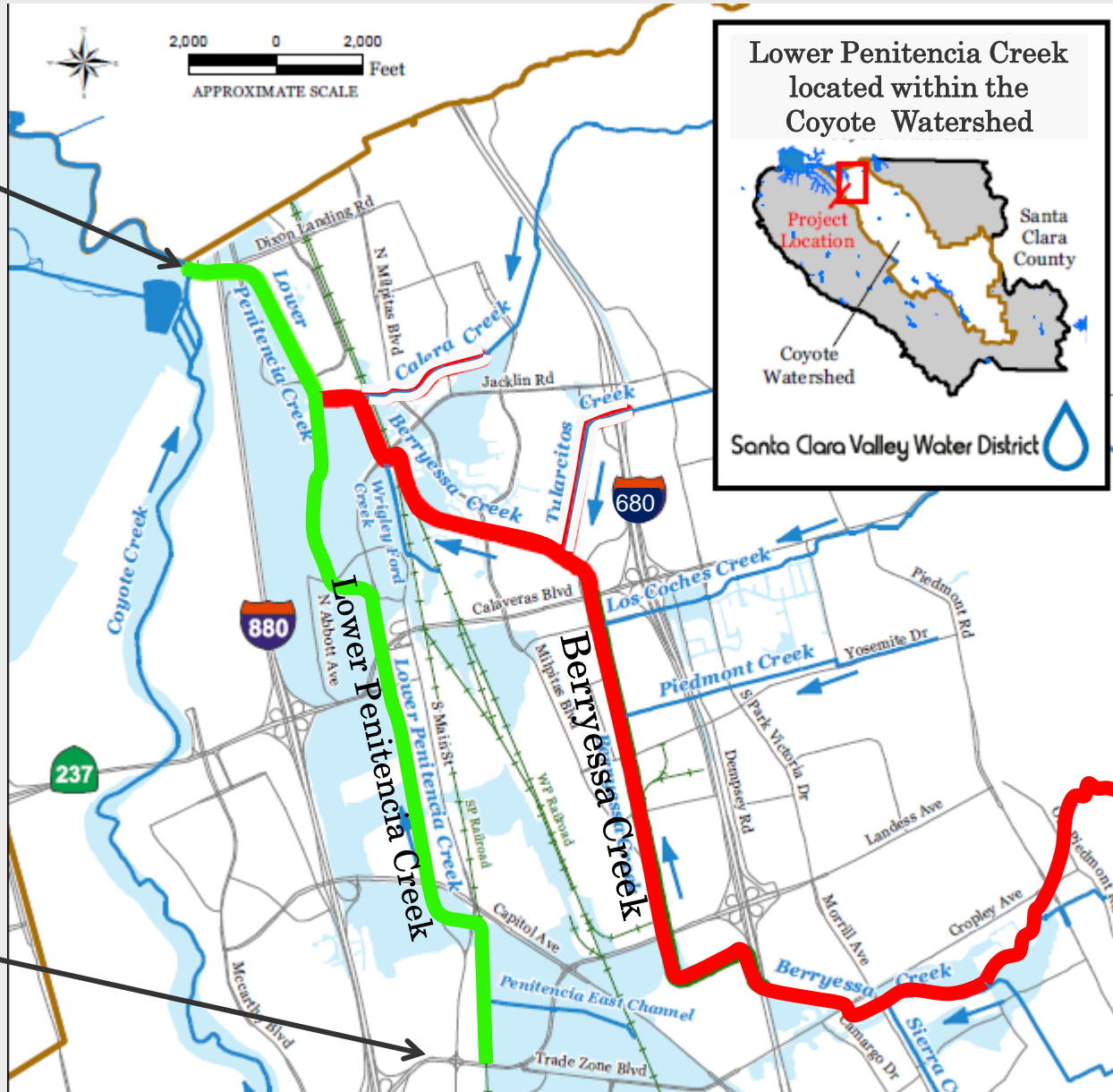
Tonight's meeting agenda

- ▶ About the water district
- ▶ **About Lower Penitencia Creek**
 - ▶ Planning study
 - ▶ Study area and related projects
 - ▶ Why do this study/study limits
 - ▶ Objectives/alternatives
 - ▶ Schedule, next steps
 - ▶ Q & A

Planning study process



Study area



Lower Penitencia Creek located within the Coyote Watershed

The inset map shows the outline of Santa Clara County. A red box indicates the project location within the Coyote Watershed. The text 'Project Location' is written in red. The 'Coyote Watershed' is labeled in black. The 'Santa Clara Valley Water District' logo is at the bottom.

Santa Clara County

Coyote Watershed

Santa Clara Valley Water District

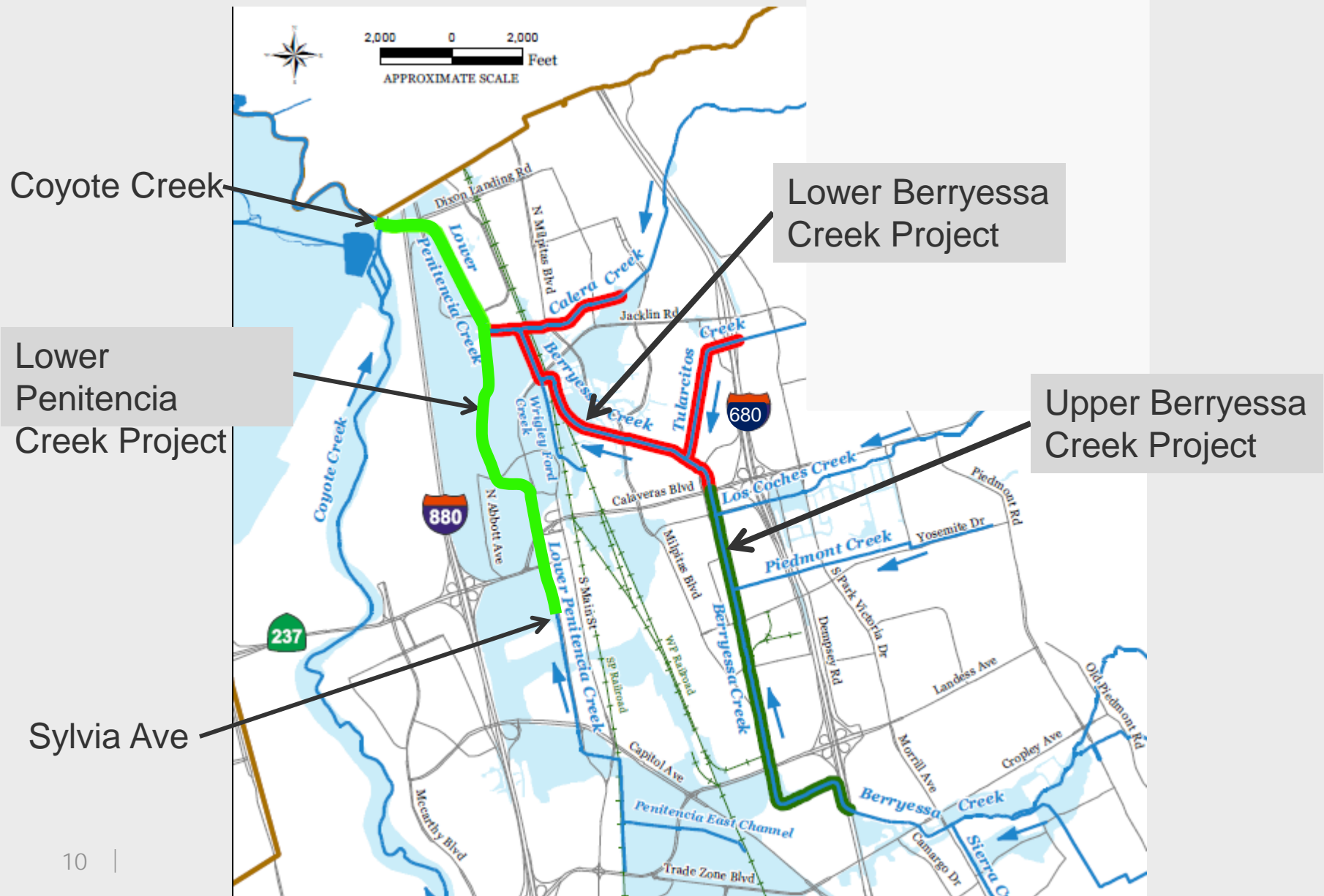
Coyote Creek



Montague Expwy



Related projects



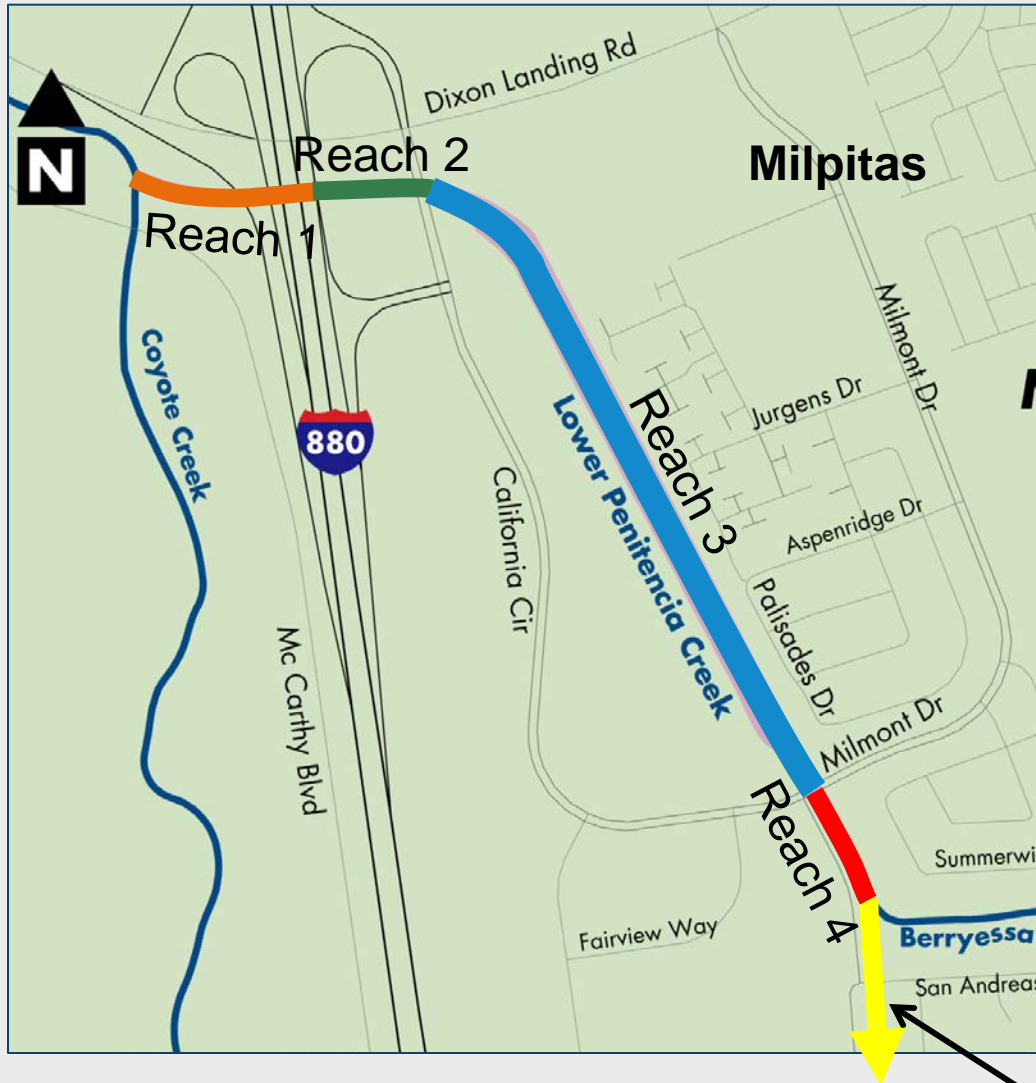
Why do this study?

- ▶ Completion of the Upper Berryessa Project will increase the one percent flow in the Berryessa – Lower Penitencia Creek system.
- ▶ This means additional improvements are required along Lower Penitencia Creek to increase its capacity to receive the increased one-percent flow.

Study objectives

- Complete improvements to carry the new one-percent flow coming from the Upper Berryessa Creek Project
- Minimize maintenance requirements
- Minimize existing habitat impacts
- Minimize impacts to existing trails
- Obtain FEMA certification of the improvements

Study limits



Constraints

- Hydraulics
- Area of tidal influence
- Right of way
- Existing bridges
- Operations & maintenance
- Agency permitting
- Time to complete work

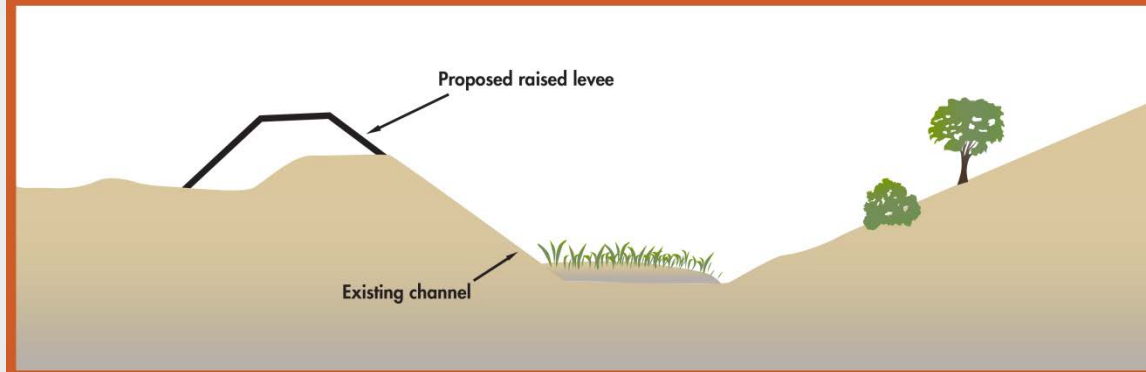
Reach 5 – potential work TBD

Alternative 1

Reach 1 - Coyote Creek to Highway 880



Reach 1 — Coyote Creek to Highway 880

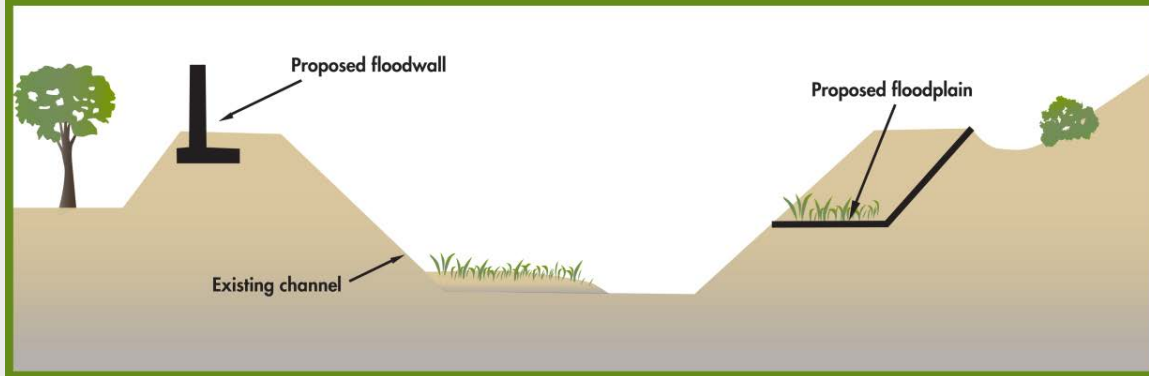


Alternative 1

Reach 2 - Highway 880 to California Circle



Reach 2 — Highway 880 to California Circle

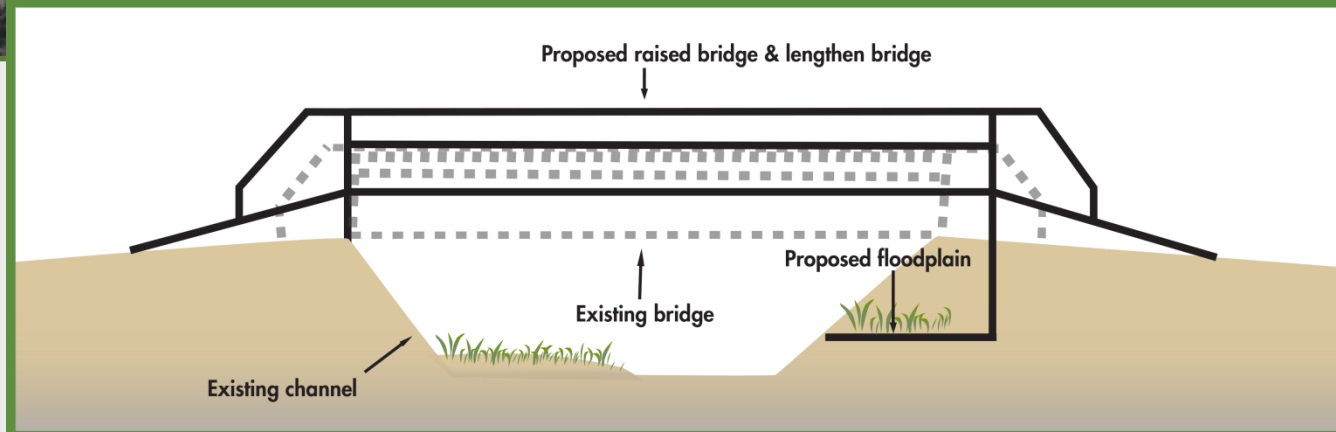


Alternative 1

Reach 2 - California Circle Bridge

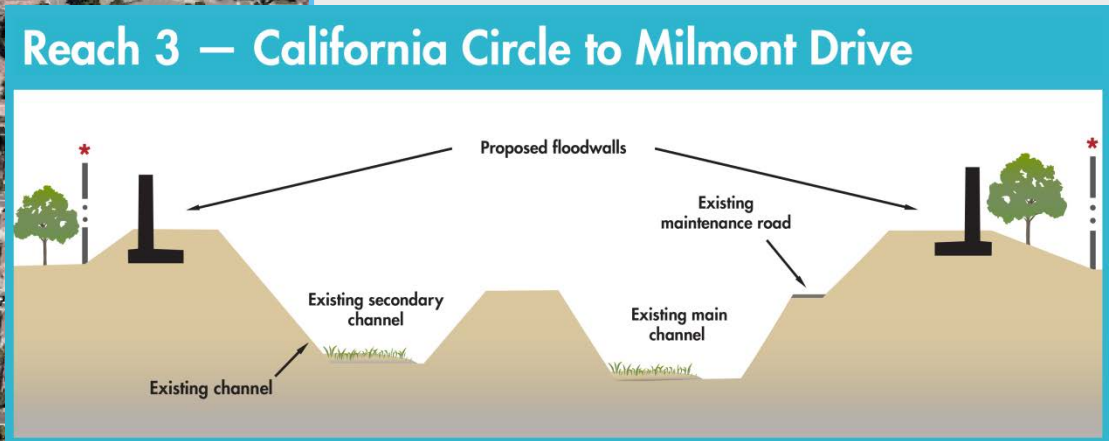


At California Circle Bridge



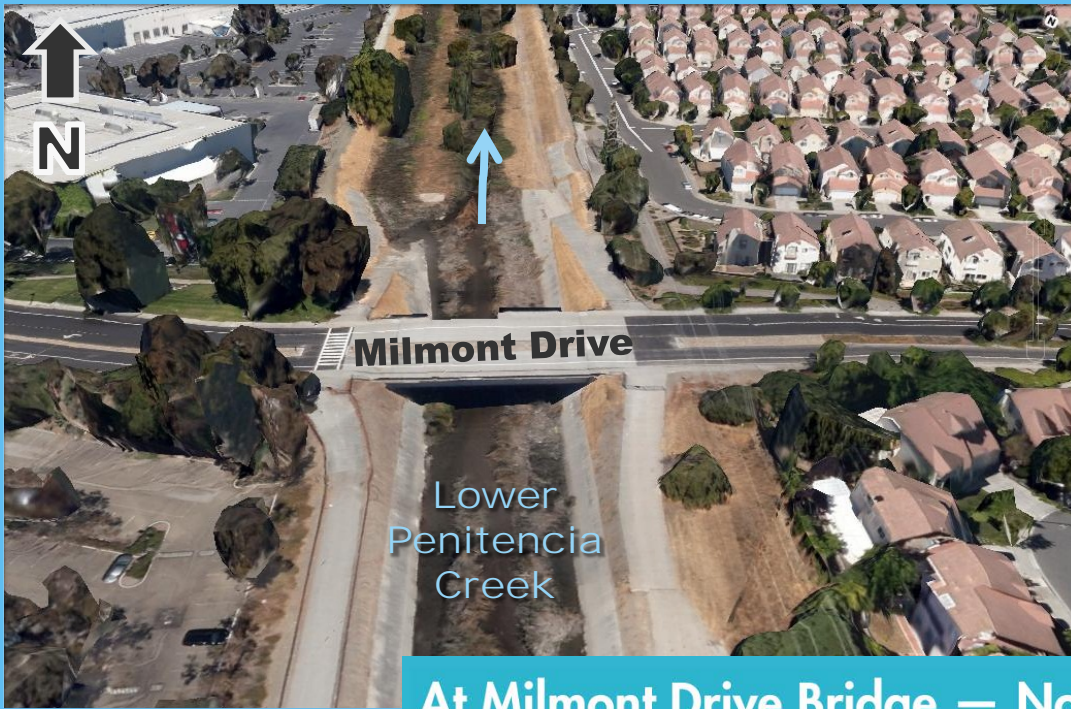
Alternative 1

Reach 3 - California Circle to Milmont Drive

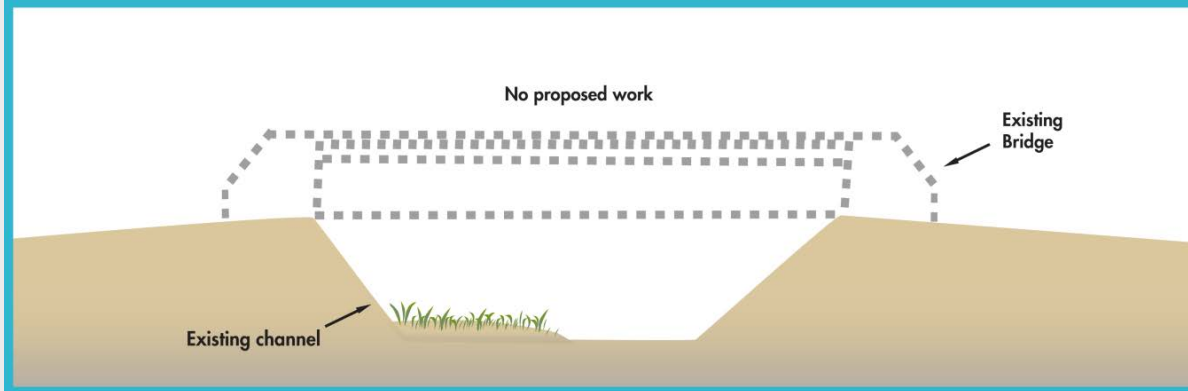


Alternative 1

Reach 3 – Milmont Drive Bridge

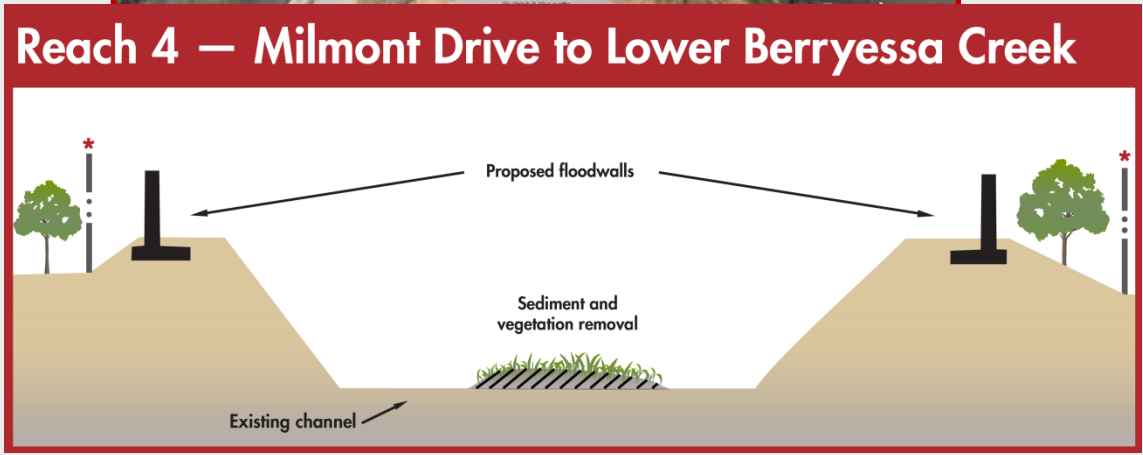


At Milmont Drive Bridge — No proposed work



Alternative 1

Reach 4 – Milmont Drive to Berryessa Creek

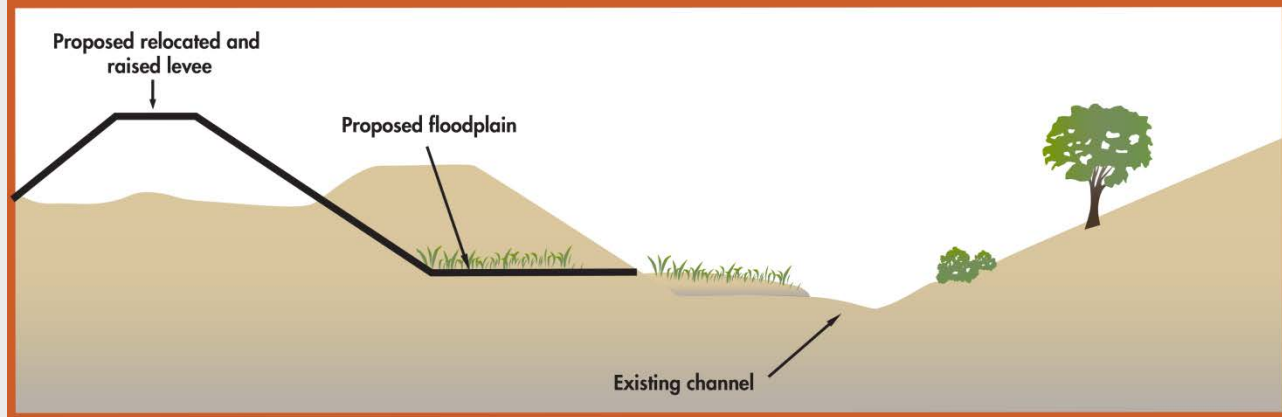


Alternative 2

Reach 1 - Coyote Creek to Highway 880

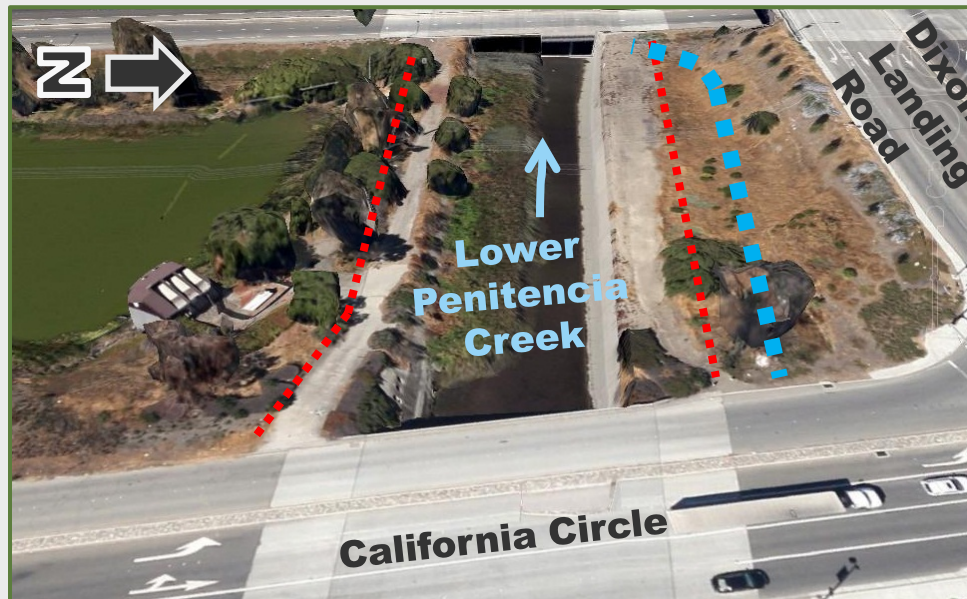


Reach 1 – Coyote Creek to Highway 880

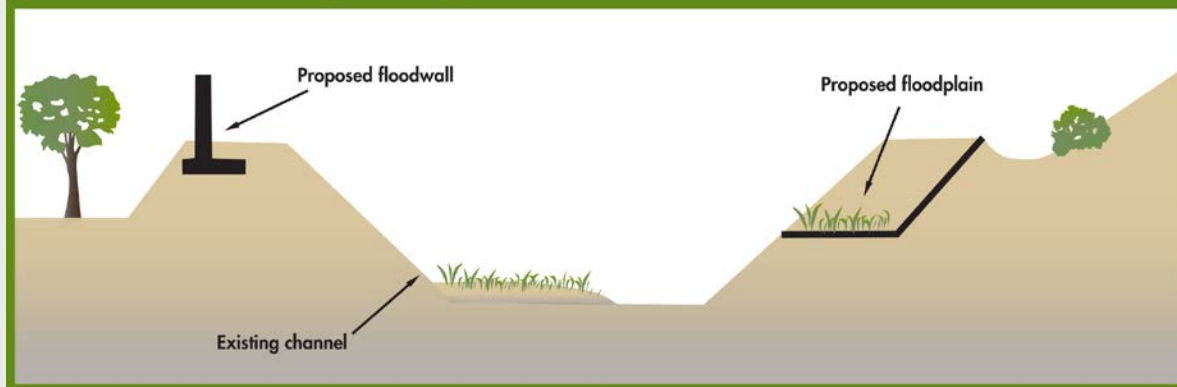


Alternative 2

Reach 2 - Highway 880 to California Circle



Reach 2 — Highway 880 to California Circle

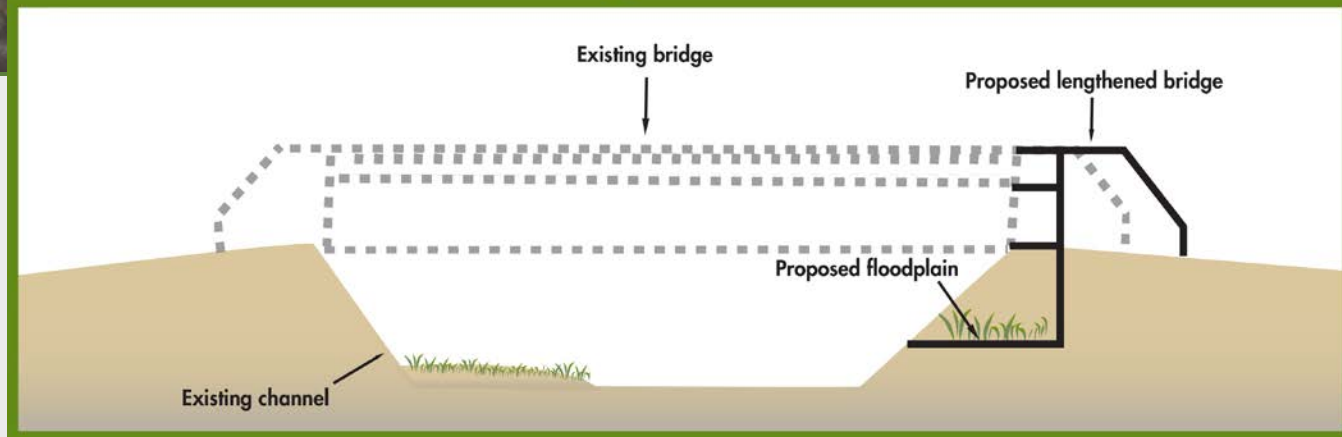


Alternative 2

Reach 2 - California Circle Bridge



At California Circle Bridge

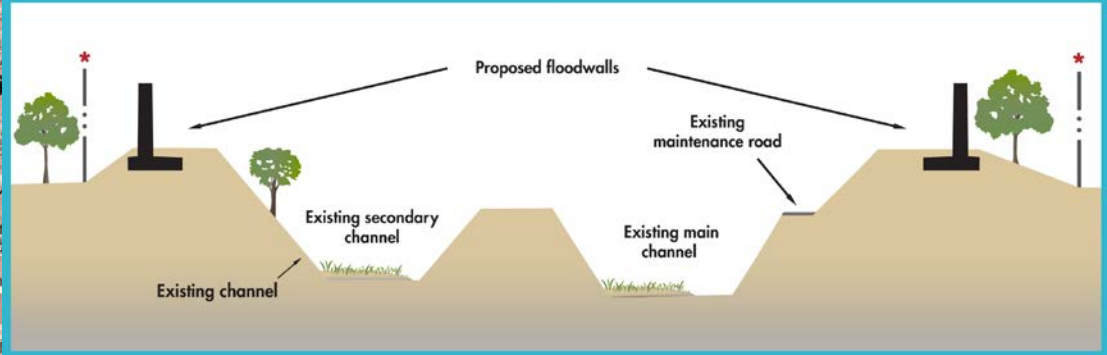


Alternative 2

Reach 3 - California Circle to Milmont Drive



Reach 3 — California Circle to Milmont Drive

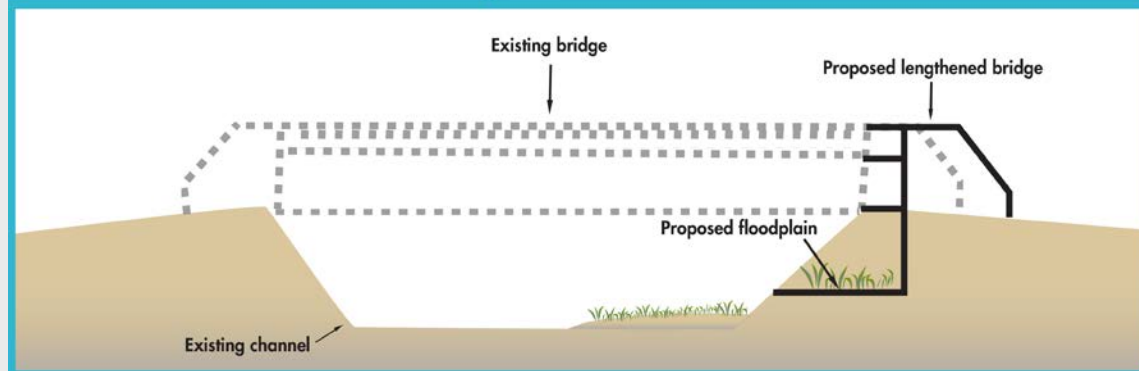


Alternative 2

Reach 3 – Milmont Drive Bridge



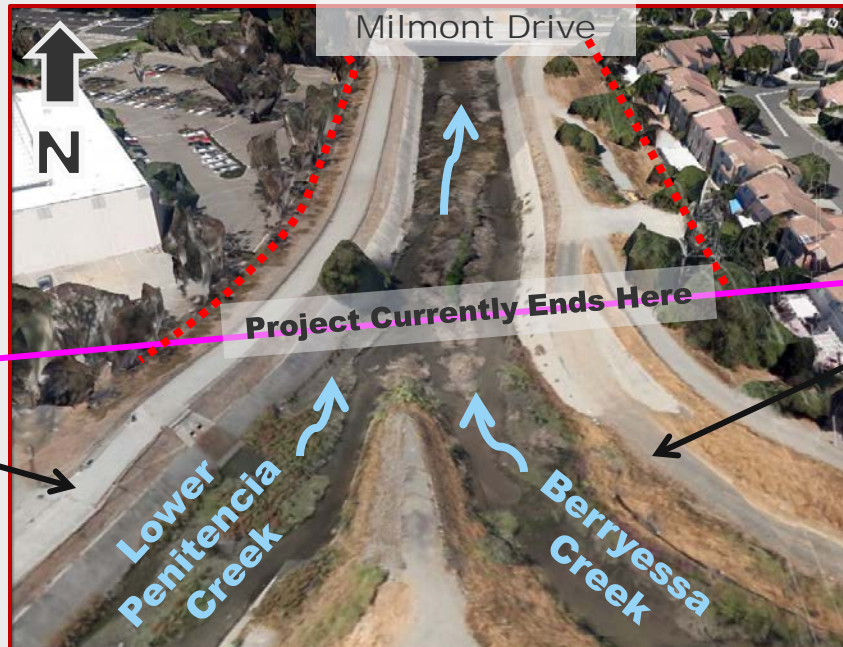
At Milmont Drive Bridge



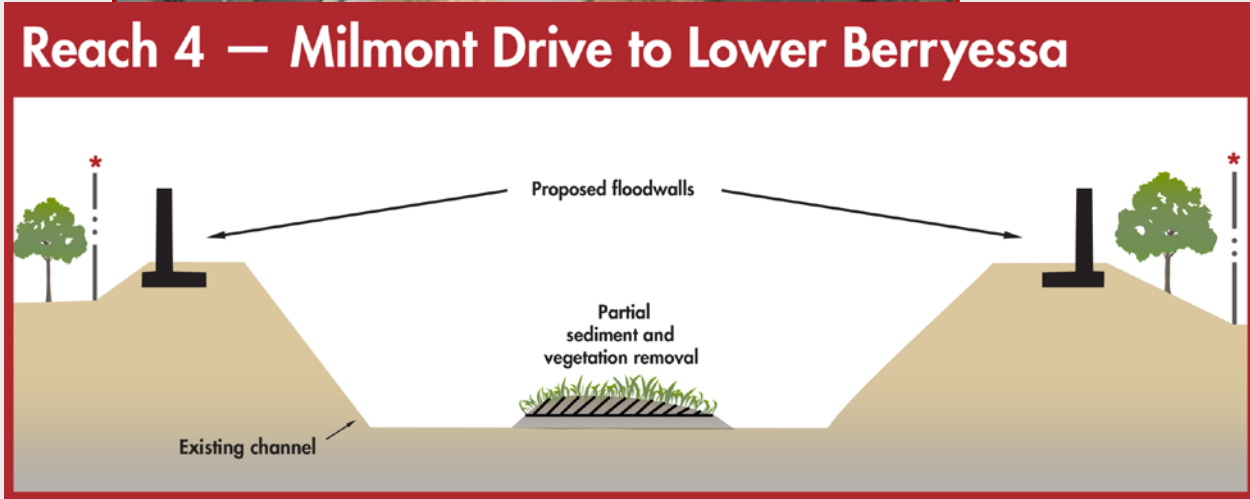
Alternative 2

Reach 4 – Milmont Drive to Berryessa Creek

Potential future Reach 5 begins here

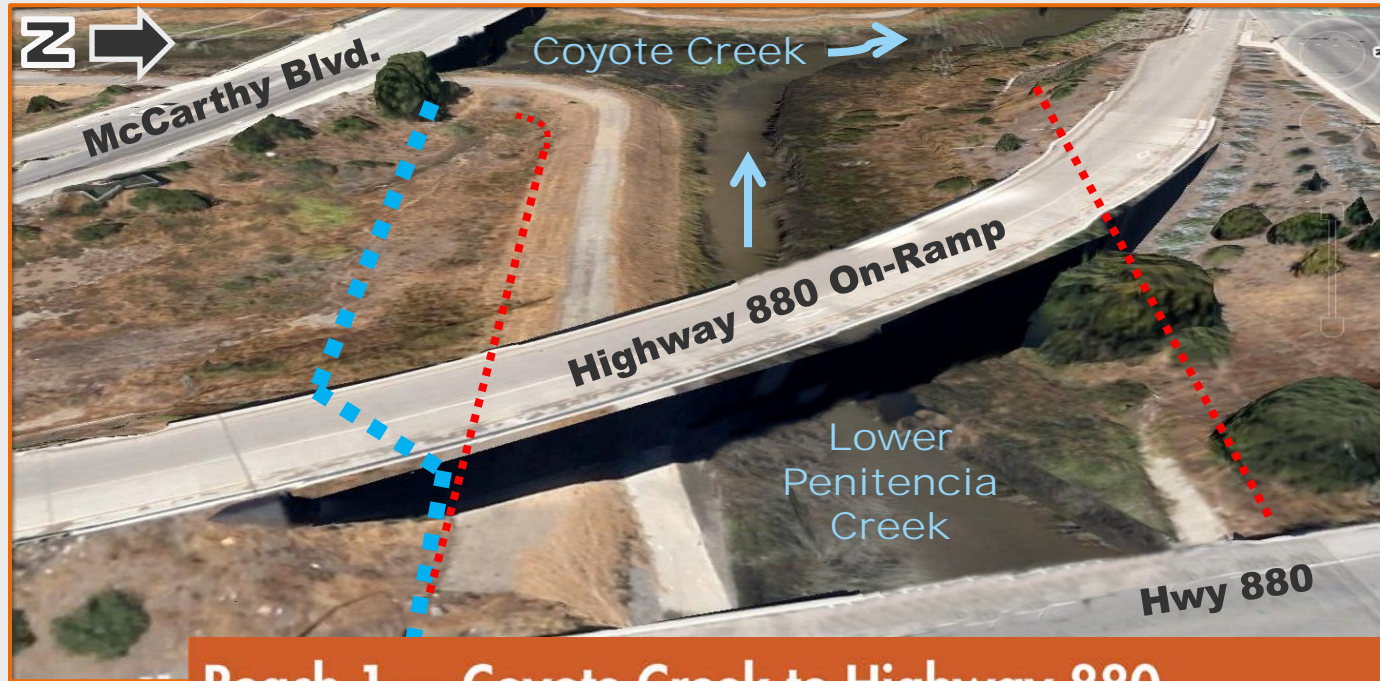


Lower Berryessa Creek Project begins here

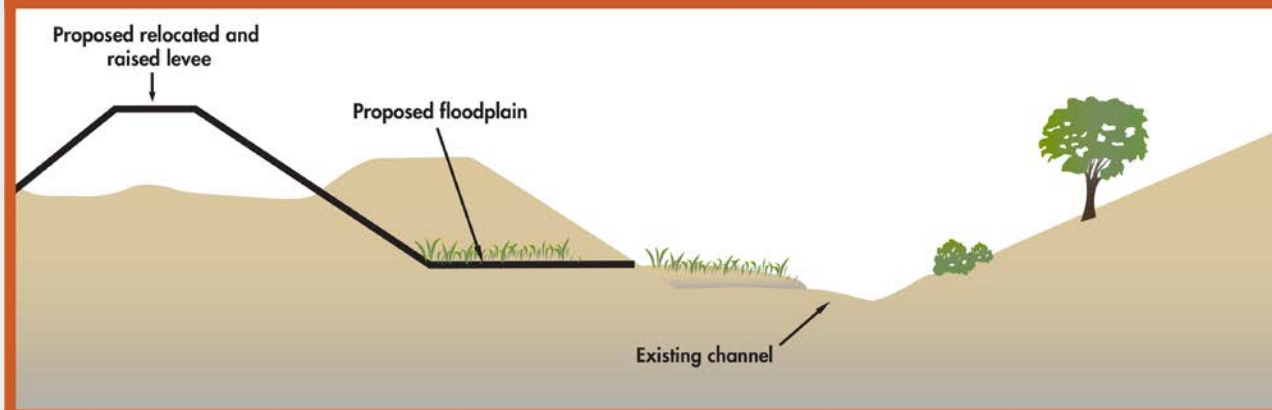


Alternative 3

Reach 1 - Coyote Creek to Highway 880

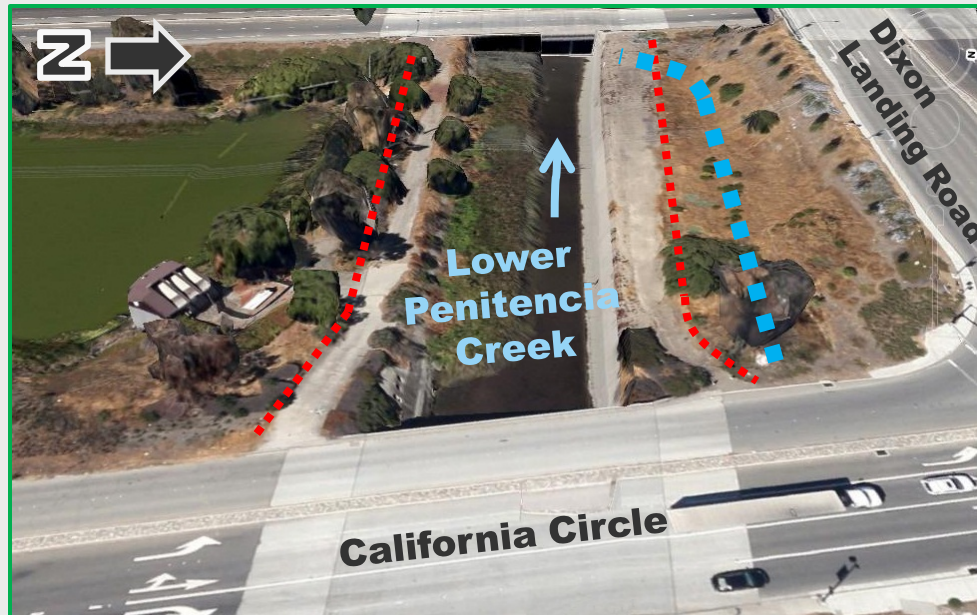


Reach 1 — Coyote Creek to Highway 880

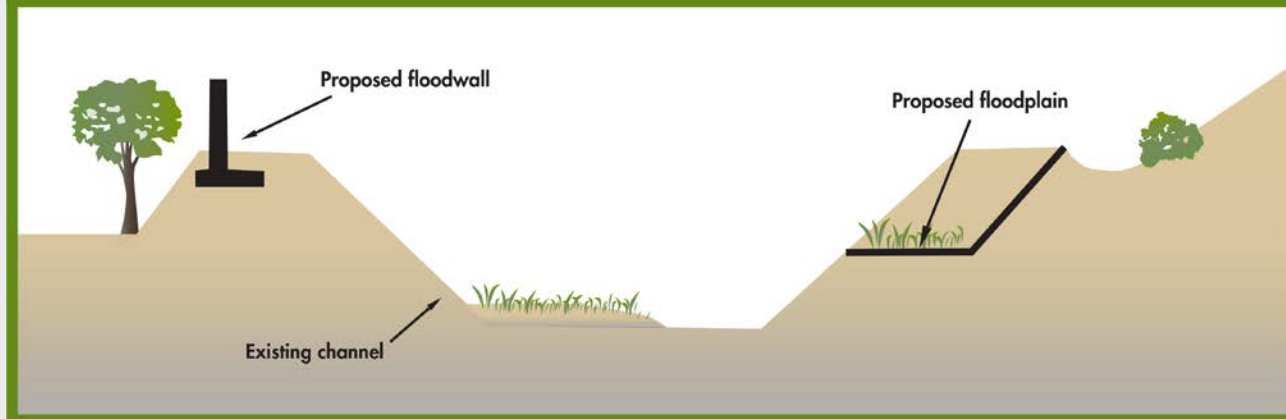


Alternative 3

Reach 2 - Highway 880 to California Circle

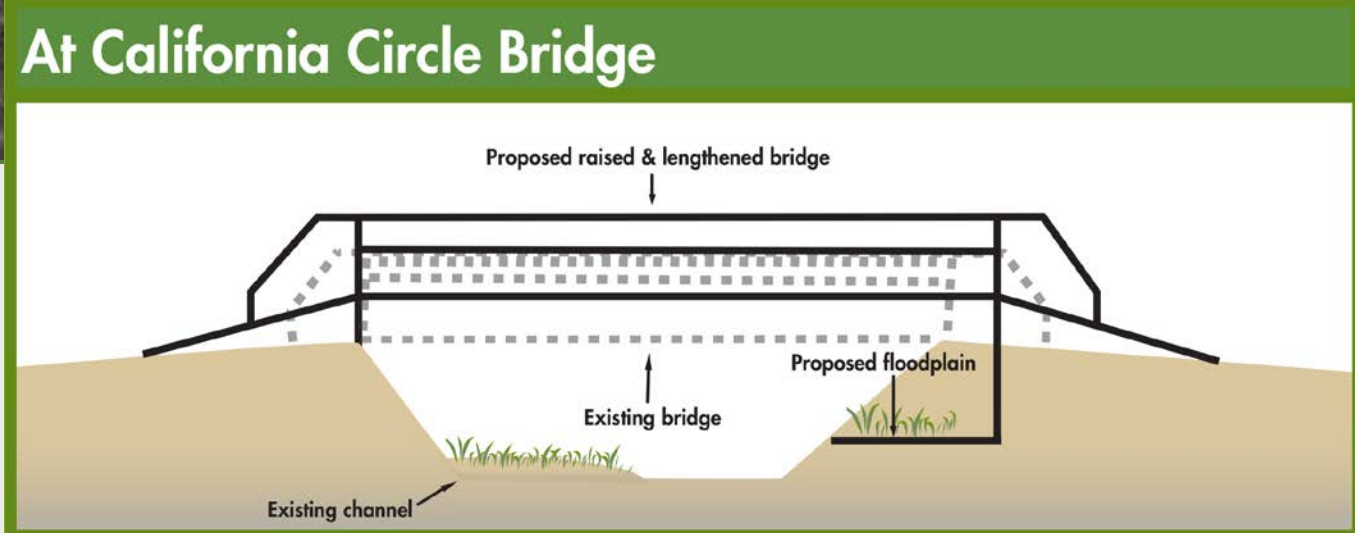


Reach 2 — Highway 880 to California Circle



Alternative 3

Reach 2 - California Circle Bridge

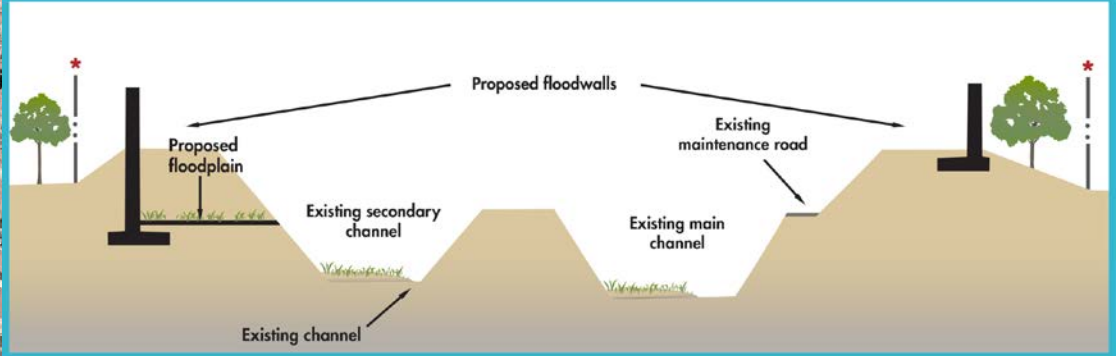


Alternative 3

Reach 3 - California Circle to Milmont Drive



Reach 3 — California Circle to Milmont Drive

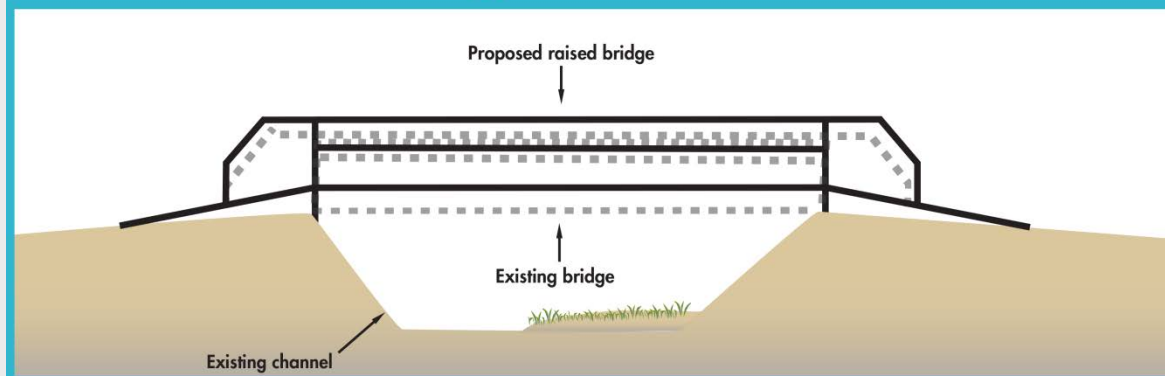


Alternative 3

Reach 3 – Milmont Drive Bridge



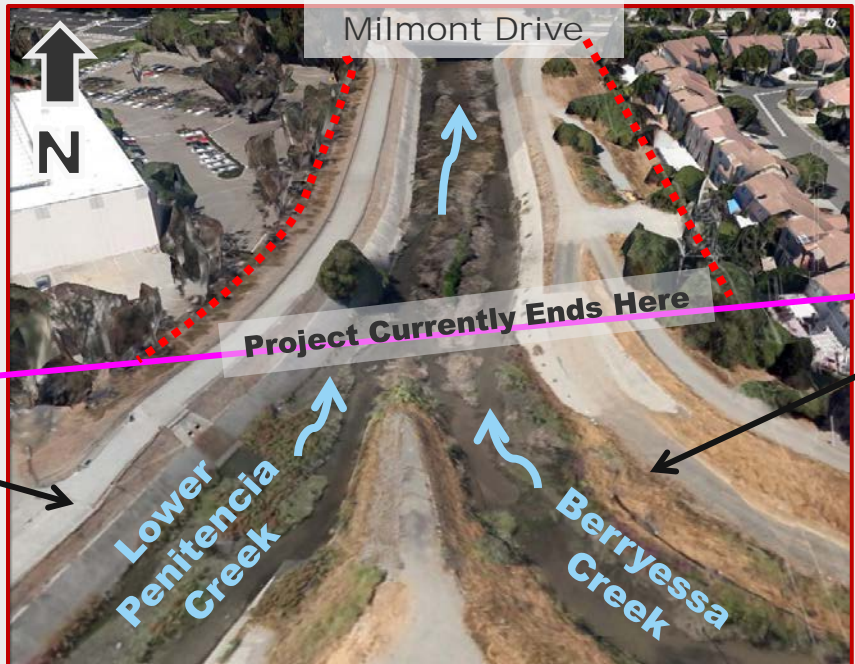
At Milmont Drive Bridge



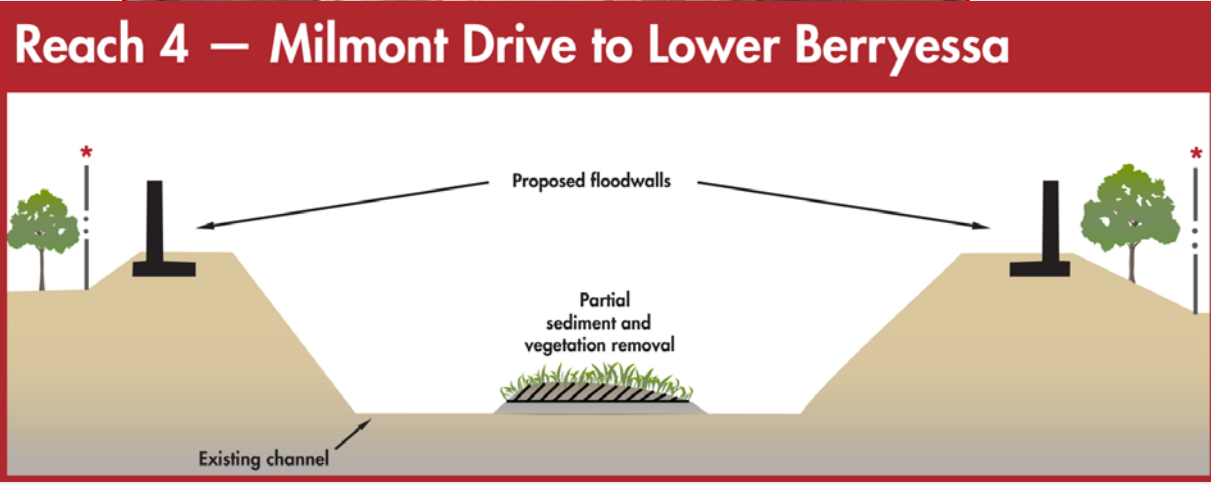
Alternative 3

Reach 4 – Milmont Drive to Berryessa Creek

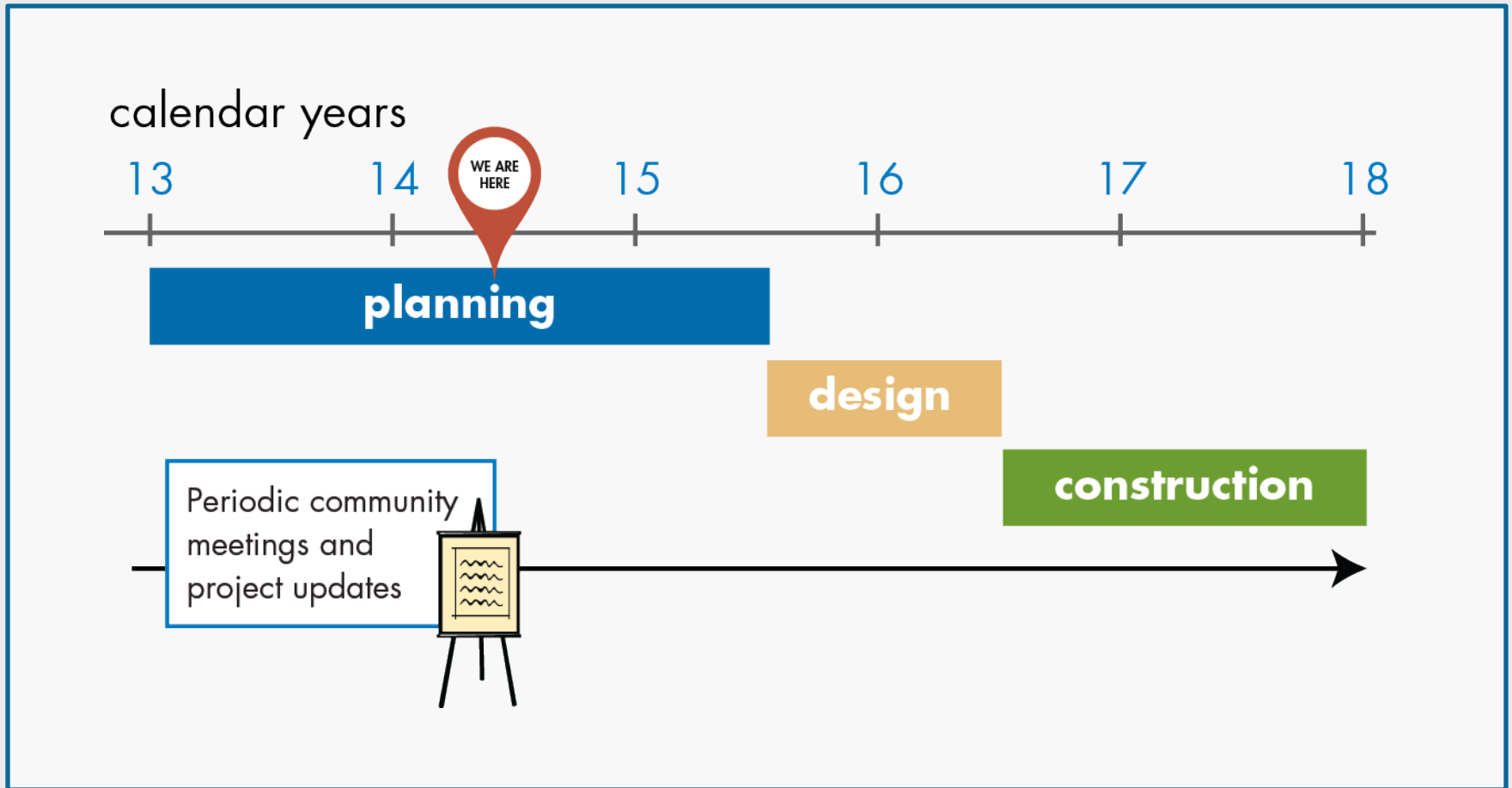
Potential future Reach 5 begins here



Lower Berryessa Creek Project begins here




Study schedule



Next steps

- Continue to work with the City of Milpitas
- Continue to work with the community
- Refine alternatives based on feedback and additional study findings
- Conduct environmental analysis on refined alternatives

Project web page



Home Services Newsroom Business Jobs About

Search GO

PRINT Font Size: A A A

CLEAN RELIABLE WATER

FLOOD PROTECTION

- Flood Protection Resources
- Flood Safety Tips
- Text Alerts
- Sandbag Sites
- Projects
 - Adobe Creek Restoration Project
 - Bollinger Road Bridge Reconstruction
 - Calabazas Creek Capacity Improvement Project
 - Calabazas Creek Flood Protection Project (Miller To Wardell)
 - Coyote Creek Flood Protection Planning Study
 - Guadalupe River
 - Lower Berryessa Creek
 - Lower Llagas Creek Capacity Restoration Project
 - Lower Penitencia Creek Improvements Project**
 - History
 - Reports And Documents
 - Timeline
 - Lower Silver Creek
 - Permanente Creek Flood Protection
 - San Francisquito Creek Flood Protection

Home > Services > Flood Protection > Lower Penitencia Creek Improvements Project

Lower Penitencia Creek Improvements Project

About the project

The Lower Penitencia Creek Improvements Project is located in the City of Milpitas. Lower Penitencia Creek receives flows from Berryessa Creek to the south and flows into Coyote Creek to the north as shown on the map to the right. There are currently improvements planned, designed and soon to be constructed on Berryessa Creek that will bring more creek flows into Lower Penitencia Creek.

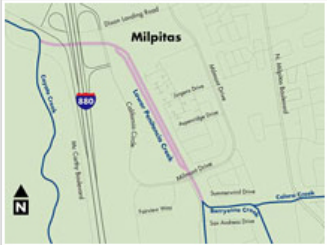
This project's reach extends approximately one mile from the north at the confluence with Coyote Creek to the south at confluence with Berryessa Creek. Depending on further planning analyses by staff, the project's reach may extend further south beyond the confluence with Berryessa Creek.

In its current condition, Lower Penitencia Creek does not have the capacity to convey the future one-percent flood event (also known as the 100 year event*) when Berryessa Creek flood improvements are completed. This project is necessary to provide continuous flood protection for Berryessa and Lower Penitencia creek homes and businesses.

*A 100-year storm event, sometimes called a one-percent flood event, has a 1-in-100 chance of occurring in any given year.

Project objectives

- Restore capacity to Lower Penitencia Creek and provide improvements in the project reaches to accommodate the future one percent flow.
- Provide freeboard as required by FEMA standards (freeboard is the distance between the level of the water and the upper surface of the levee and/or floodwall).
- Complete construction of Lower Penitencia Creek improvements, prior to the completion of Upper Berryessa Creek construction.
- Minimize future maintenance needs.



(click to enlarge)

Map highlights the project location in purple.

Project information

Project start	2013
Project finish	2018
Total Cost	\$17-30 million
Status	Planning phase

For more information:

- Contact Project Manager Stacey Lee at (408) 630-3078 or by email.

We want to work with you

Project contacts

Rechelle Blank

(408) 630-2615

rblank@valleywater.org

Stacey Lee

(408) 630-3078

slee@valleywater.org

Santa Clara Valley Water District

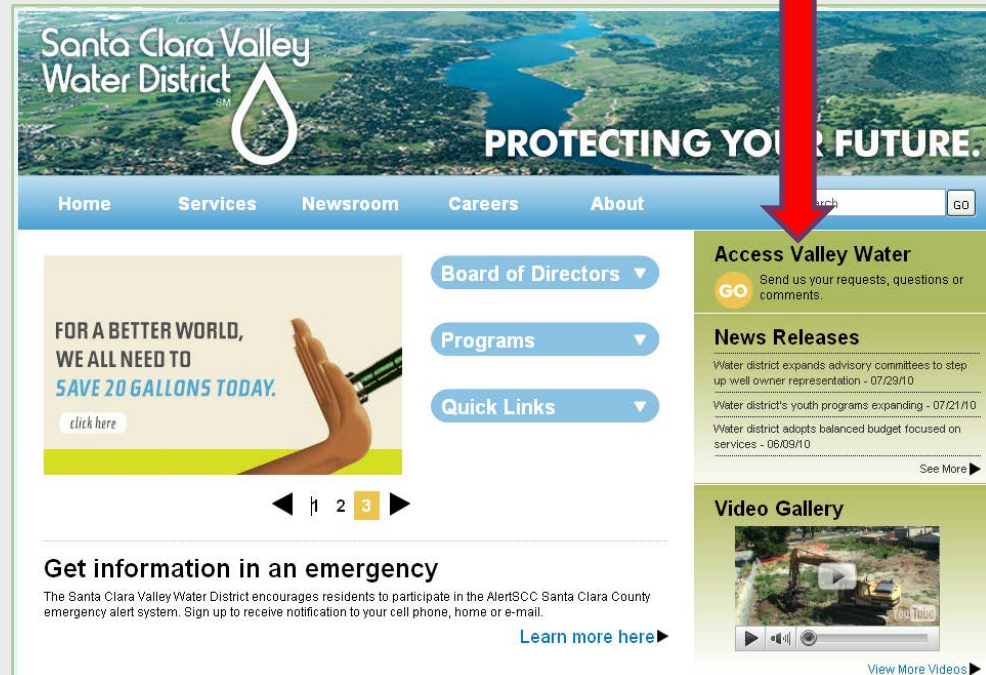
5750 Almaden Expressway

San Jose, CA 95118



Access Valley Water lets you reach us directly from your computer.

Refer to the Access Valley Water handout. Select “*Projects planned for my neighborhood*” after clicking here



The screenshot shows the website header with the logo and tagline "PROTECTING YOUR FUTURE." Below the header is a navigation bar with links for Home, Services, Newsroom, Careers, and About. A search bar is located on the right side of the navigation bar. The main content area features a large banner with the text "FOR A BETTER WORLD, WE ALL NEED TO SAVE 20 GALLONS TODAY." and a "click here" button. To the right of the banner are three dropdown menus: "Board of Directors", "Programs", and "Quick Links". On the far right, there is a sidebar with the "Access Valley Water" section, which includes a "GO" button and a link to "Send us your requests, questions or comments." Below this are sections for "News Releases" and "Video Gallery". A red arrow points from the text above to the "Access Valley Water" link in the sidebar.

Questions

Comments