

NOTES:

1. USERS OF THESE MAPS ARE ADVISED THAT BECAUSE OF THE METHOD, PROCEDURES, AND ASSUMPTIONS USED TO DEVELOP THE FLOOD AREAS, THE LIMITS OF FLOODING SHOWN AND FLOOD WAVE TRAVEL TIMES ARE APPROXIMATE AND SHOULD BE USED ONLY AS A GUIDELINE FOR ESTABLISHING EVACUATION ZONES. ACTUAL AREAS INUNDATED WILL DEPEND ON ACTUAL FAILURE CONDITIONS AND MAY DIFFER FROM AREAS SHOWN ON THE MAPS.

2. TWO FLOODING SCENARIOS ARE PRESENTED ON THE MAPS; THE "FAIR WEATHER" SCENARIO AND THE "INFLOW DESIGN FLOOD" SCENARIO. THESE SCENARIOS ARE DEFINED AS FOLLOWS:

(A) THE FAIR WEATHER SCENARIO ASSUMES THAT THE DAM FAILURE OCCURS DURING NON-STORM CONDITIONS WITH A NORMAL FULL POOL ELEVATION IN THE RESERVOIR AND NORMAL FLOW CONDITIONS DOWNSTREAM OF THE DAM.

(B) THE INFLOW DESIGN FLOOD SCENARIO ASSUMES THAT THE DAM FAILURE OCCURS DURING A LARGE STORM EVENT WITH A HIGH POOL ELEVATION IN THE RESERVOIR AND HIGH FLOW CONDITIONS DOWNSTREAM OF THE DAM. FOR THIS PARTICULAR DAM, THE INFLOW DESIGN FLOOD IS EQUAL TO THE PROBABLE MAXIMUM FLOOD EVENT. ANTECEDENT FLOW CONDITIONS ASSUME NEAR FULL CREEKS BY USING AS-IS LIDAR TERRAIN DATA (NO GROUND SURVEY).

**ANDERSON DAM
FLOOD INUNDATION MAPS**

LEROY ANDERSON DAM

SCALE 1" = 40000' SHEET 1	
SANTA CLARA VALLEY WATER DISTRICT 5750 ALMADEN EXPWY SAN JOSE, CA 95118-3614 (408) 265 - 2600	
LEROY ANDERSON DAM FLOOD INUNDATION MAPS CA DWR DAM ID# 72-009 SANTA CLARA COUNTY	
Santa Clara Valley Water District REVIEWED BY:	
ACCEPTED BY:	
DATE APR2016	DESIGN JX
DRAWN JX	CHECKED
AFFECTED JURISDICTIONS: Santa Clara County, San Benito County, Santa Cruz County, Monterey County, San Joaquin County, City of San Jose, City of Milpitas, City of Sunnyvale, City of Mountain View, City of Gilroy, City of Morgan Hill, City of Watsonville	
USGS QUADRANGLES: Mountain View, Milpitas, San Jose West, San Jose East, Santa Teresa Hills, Morgan Hill, Gilroy, Mount Sizer, Mount Madonna, Chittenden, San Felipe, Watsonville East, Watsonville West, Moose Landing	

INFLOW DESIGN FLOOD (NORTH)								FAIR WEATHER (NORTH)							
XS STA (Miles D/S of Dam)	Maximum Flow (cfs)	Flood-Wave Arrival Time	Peak Elevation Time	Deflood Time	Maximum Depth (ft)	Maximum Elevation (ft)	Maximum Velocity (ft/s)	XS STA (Miles D/S of Dam)	Maximum Flow (cfs)	Flood-Wave Arrival Time	Peak Elevation Time	Deflood Time	Maximum Depth (ft)	Maximum Elevation (ft)	Maximum Velocity (ft/s)
1	1,360,000	0 HR 30 MIN	0 HR 50 MIN	5 HR 10 MIN	18.88	366.5	11.3	1	974,500	0 HR 45 MIN	1 HR 20 MIN	4 HR 55 MIN	14.92	362.5	9.8
2	1,333,700	0 HR 45 MIN	0 HR 50 MIN	6 HR 30 MIN	20.93	356.1	11.7	2	962,300	0 HR 40 MIN	1 HR 15 MIN	5 HR 40 MIN	17.59	352.8	9.5
3	1,311,100	0 HR 45 MIN	0 HR 55 MIN	10 HR 20 MIN	25.82	337.5	11.9	3	951,200	0 HR 45 MIN	1 HR 20 MIN	9 HR 0 MIN	22.27	334.0	10.5
4	1,296,700	0 HR 50 MIN	0 HR 55 MIN	10 HR 30 MIN	23.40	318.6	9.9	4	943,400	0 HR 55 MIN	1 HR 25 MIN	9 HR 30 MIN	20.80	316.0	8.7
5	1,272,400	0 HR 55 MIN	1 HR 5 MIN	10 HR 25 MIN	26.39	297.1	9.8	5	930,300	1 HR 0 MIN	1 HR 30 MIN	12 HR 55 MIN	23.12	293.8	8.8
6	1,122,900	1 HR 30 MIN	1 HR 45 MIN	13 HR 5 MIN	36.75	290.5	6.2	6	821,800	1 HR 10 MIN	1 HR 50 MIN	17 HR 0 MIN	29.45	283.2	6.6
7	763,900	1 HR 40 MIN	1 HR 50 MIN	12 HR 55 MIN	43.81	288.4	4.8	7	608,600	1 HR 20 MIN	2 HR 20 MIN	45 HR 50 MIN	36.12	280.7	6.3
8	670,600	1 HR 40 MIN	1 HR 55 MIN	14 HR 5 MIN	43.71	284.1	4.2	8	429,800	1 HR 25 MIN	2 HR 25 MIN	16 HR 30 MIN	36.56	277.0	6.1
9	664,600	1 HR 55 MIN	2 HR 10 MIN	13 HR 5 MIN	17.27	232.1	6.7	9	420,600	2 HR 5 MIN	2 HR 50 MIN	13 HR 30 MIN	13.03	227.8	5.8
10	652,000	2 HR 0 MIN	2 HR 20 MIN	12 HR 0 MIN	19.87	222.2	4.8	10	406,700	2 HR 15 MIN	3 HR 0 MIN	13 HR 55 MIN	15.40	217.7	4.8
11	639,000	2 HR 10 MIN	2 HR 30 MIN	12 HR 55 MIN	19.49	209.9	3.9	11	393,400	2 HR 30 MIN	3 HR 10 MIN	17 HR 15 MIN	15.75	206.2	3.4
12	619,200	2 HR 50 MIN	3 HR 20 MIN	15 HR 35 MIN	20.97	189.2	4.2	12	367,400	2 HR 50 MIN	4 HR 25 MIN	14 HR 15 MIN	15.63	183.9	3.6
13	531,700	3 HR 10 MIN	3 HR 45 MIN	17 HR 5 MIN	33.39	186.5	2.4	13	271,700	3 HR 5 MIN	4 HR 50 MIN	40 HR 40 MIN	28.23	181.4	2.4
14	458,000	3 HR 30 MIN	3 HR 20 MIN	1 HR 0 MIN	11.43	164.0	3.0	14	232,400	3 HR 10 MIN	4 HR 30 MIN	2 HR 35 MIN	11.14	163.7	2.7
15	419,900	3 HR 50 MIN	5 HR 25 MIN	5 HR 50 MIN	15.54	154.4	2.7	15	194,200	3 HR 25 MIN	5 HR 20 MIN	3 HR 5 MIN	14.72	153.5	2.3
16	409,000	4 HR 20 MIN	5 HR 15 MIN	9 HR 15 MIN	21.41	147.3	3.8	16	186,600	3 HR 45 MIN	7 HR 30 MIN	16 HR 55 MIN	10.84	136.8	2.8
17	401,400	4 HR 45 MIN	5 HR 15 MIN	13 HR 0 MIN	29.80	137.92	3.3	17	181,500	4 HR 5 MIN	7 HR 35 MIN	33 HR 10 MIN	23.06	131.18	2.5
18	391,200	5 HR 10 MIN	6 HR 0 MIN	20 HR 45 MIN	26.03	117.94	2.6	18	177,000	4 HR 30 MIN	8 HR 0 MIN	31 HR 15 MIN	22.30	114.21	2.1
19	369,600	5 HR 35 MIN	6 HR 10 MIN	18 HR 15 MIN	29.60	105.51	2.3	19	162,800	6 HR 45 MIN	8 HR 30 MIN	49 HR 50 MIN	24.73	100.64	1.9
20	343,300	5 HR 50 MIN	6 HR 30 MIN	19 HR 15 MIN	28.04	90.95	2.4	20	149,000	7 HR 15 MIN	8 HR 55 MIN	43 HR 50 MIN	24.13	87.04	1.9
21	320,900	6 HR 40 MIN	7 HR 20 MIN	21 HR 40 MIN	27.65	74.84	2.2	21	137,200	7 HR 35 MIN	10 HR 0 MIN	42 HR 5 MIN	22.52	69.71	1.7
22	312,300	7 HR 0 MIN	7 HR 50 MIN	19 HR 10 MIN	24.52	62.27	2.4	22	132,000	7 HR 55 MIN	10 HR 40 MIN	42 HR 10 MIN	19.80	57.55	1.7
23	304,300	7 HR 30 MIN	8 HR 15 MIN	19 HR 45 MIN	13.65	49.96	2.2	23	128,200	8 HR 45 MIN	11 HR 20 MIN	20 HR 55 MIN	9.60	45.91	1.6
24	293,400	8 HR 15 MIN	9 HR 5 MIN	22 HR 5 MIN	21.87	38.09	1.8	24	122,900	8 HR 50 MIN	12 HR 25 MIN	44 HR 5 MIN	16.75	32.97	1.4
25	281,500	8 HR 50 MIN	9 HR 45 MIN	20 HR 10 MIN	13.75	29.31	2.0	25	117,400	10 HR 25 MIN	13 HR 25 MIN	29 HR 25 MIN	9.53	25.09	1.5
26	267,600	9 HR 25 MIN	10 HR 20 MIN	20 HR 45 MIN	21.53	23.94	1.6	26	110,300	11 HR 15 MIN	14 HR 15 MIN	30 HR 15 MIN	17.32	19.73	1.3
27	253,800	9 HR 45 MIN	10 HR 55 MIN	20 HR 35 MIN	28.15	16.02	1.8	27	103,700	13 HR 5 MIN	15 HR 5 MIN	17 HR 15 MIN	25.22	13.09	1.7
28	233,800	11 HR 55 MIN	13 HR 10 MIN	18 HR 50 MIN	9.51	9.48	2.5	28	88,100	14 HR 15 MIN	21 HR 10 MIN	7 HR 40 MIN	6.84	6.81	2.3
29	214,900	12 HR 0 MIN	13 HR 25 MIN	18 HR 25 MIN	11.42	9.29	2.3	29	70,800	16 HR 0 MIN	21 HR 15 MIN	6 HR 10 MIN	8.86	6.73	2.3
30	159,000	12 HR 45 MIN	14 HR 40 MIN	10 HR 20 MIN	8.28	7.59	2.4	30	55,500	17 HR 55 MIN	23 HR 30 MIN	6 HR 20 MIN	6.19	5.50	2.7
31	135,500	13 HR 15 MIN	14 HR 55 MIN	12 HR 5 MIN	7.56	7.15	2.1	31	51,900	17 HR 30 MIN	24 HR 0 MIN	7 HR 10 MIN	5.62	5.21	1.7
32	119,500	13 HR 20 MIN	14 HR 55 MIN	11 HR 30 MIN	5.88	7.10	4.6	32	47,800	18 HR 30 MIN	24 HR 0 MIN	6 HR 35 MIN	3.97	5.19	3.4
33	26,000	14 HR 30 MIN	15 HR 50 MIN	2 HR 30 MIN	2.74	5.58	3.2	33	1,400	28 HR 55 MIN	31 HR 45 MIN	3 HR 15 MIN	0.81	3.65	1.2
34	8,400	16 HR 40 MIN	21 HR 15 MIN	5 HR 40 MIN	2.08	4.92	1.5	34	0	N/A	N/A	N/A	0.39	3.23	0.1
35	4,100	26 HR 35 MIN	45 HR 20 MIN	N/A	2.35	2.54	1.3	35	0	N/A	N/A	N/A	0.00	0.19	0.0

INFLOW DESIGN FLOOD (COYOTE)								FAIR WEATHER (COYOTE)							
XS STA (Miles D/S of Dam)	Maximum Flow (cfs)	Flood-Wave Arrival Time	Peak Elevation Time	Deflood Time	Maximum Depth (ft)	Maximum Elevation (ft)	Maximum Velocity (ft/s)	XS STA (Miles D/S of Dam)	Maximum Flow (cfs)	Flood-Wave Arrival Time	Peak Elevation Time	Deflood Time	Maximum Depth (ft)	Maximum Elevation (ft)	Maximum Velocity (ft/s)
0.5	477,600	0 HR 20 MIN	1 HR 0 MIN	12 HR 20 MIN	81.37	749.9	17.4	0.5	197,600	0 HR 20 MIN	1 HR 20 MIN	3 HR 50 MIN	51.44	719.9	13.4
1.0	477,500	0 HR 20 MIN	1 HR 0 MIN	12 HR 30 MIN	97.11	744.3	12.0	1.0	196,800	0 HR 20 MIN	1 HR 20 MIN	4 HR 20 MIN	63.45	710.6	11.8
1.5	477,000	0 HR 20 MIN	1 HR 0 MIN	12 HR 30 MIN	93.91	726.3	12.5	1.5	195,600	0 HR 20 MIN	1 HR 20 MIN	4 HR 20 MIN	59.41	691.8	10.6
2.0	475,800	0 HR 30 MIN	1 HR 0 MIN	12 HR 30 MIN	60.56	688.4	13.5	2.0	194,900	0 HR 30 MIN	1 HR 20 MIN	5 HR 30 MIN	40.15	668.0	10.4
2.3	474,800	0 HR 30 MIN	1 HR 0 MIN	12 HR 20 MIN	56.57	687.2	15.0	2.3	194,200	0 HR 30 MIN	1 HR 20 MIN	5 HR 30 MIN	34.95	665.6	12.1

SANTA CLARA VALLEY WATER DISTRICT		SHEET 2	
5750 ALMADEN EXPWY SAN JOSE, CA 95118-3614 (408) 265 - 2600			
LERROY ANDERSON DAM FLOOD INUNDATION MAPS			
CA DWR DAM ID# 72-009 SANTA CLARA COUNTY			
Santa Clara Valley Water District		REVIEWED BY:	
ACCEPTED BY:		DRAWN JX	
DATE APR2016		DESIGN JX	
DRAWN JX		CHECKED	
<small>AFFECTED JURISDICTIONS: Santa Clara County, San Benito County, Santa Cruz County, Alameda County, Contra Costa County, Merced County, Monterey County, Placer County, San Bernardino County, San Diego County, Stanislaus County, Yuba County, City of Milpitas, City of San Jose, City of Mountain View, City of Gilroy, City of Morgan Hill, City of Watsonville</small>			
<small>USGS QUADRANGLES: Mountain View, Milpitas, San Jose West, San Jose East, Santa Teresa Hills, Morgan Hill, Gilroy, Mount Sizer, Mount Madonna, Chittenden, San Felipe, Watsonville East, Watsonville West, Moss Landing</small>			

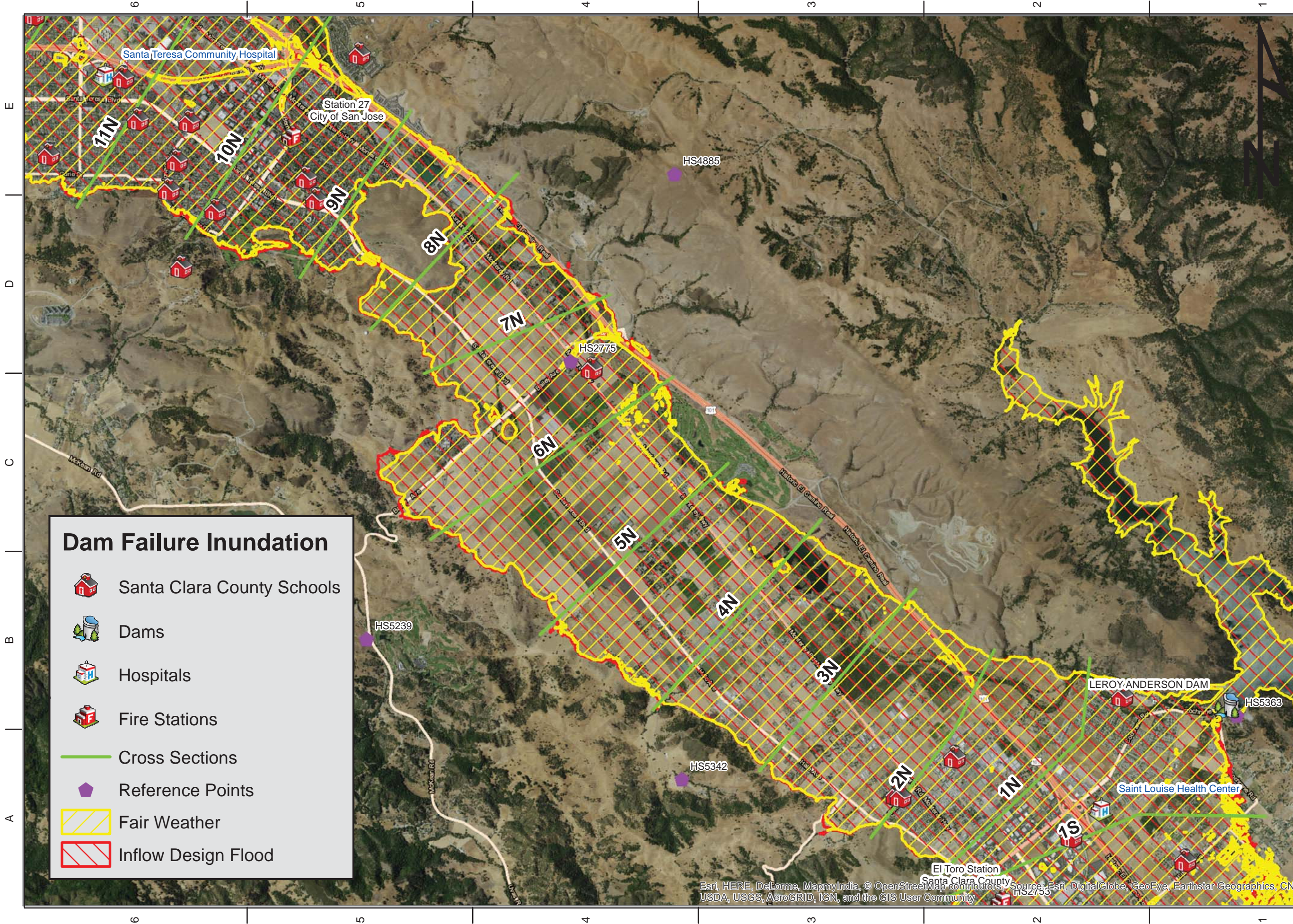
INFLOW DESIGN FLOOD (SOUTH)								FAIR WEATHER (SOUTH)								SHEET 3				
XS STA (Miles D/S of Dam)	Maximum Flow (cfs)	Flood-Wave Arrival Time	Peak Elevation Time	Deflood Time	Maximum Depth (ft)	Maximum Elevation (ft)	Maximum Velocity (ft/s)	XS STA (Miles D/S of Dam)	Maximum Flow (cfs)	Flood-Wave Arrival Time	Peak Elevation Time	Deflood Time	Maximum Depth (ft)	Maximum Elevation (ft)	Maximum Velocity (ft/s)	SANTA CLARA VALLEY WATER DISTRICT 5750 ALMADEN EXPWY SAN JOSE, CA 95118-3614 (408) 265 - 2600	LEROY ANDERSON DAM FLOOD INUNDATION MAPS CA DWR DAM ID# 72-009 SANTA CLARA COUNTY			
1	469,600	0 HR 30 MIN	0 HR 55 MIN	11 HR 0 MIN	21.71	367.65	7.6	1	199,300	0 HR 50 MIN	1 HR 20 MIN	10 HR 55 MIN	17.70	363.64	5.6					
2	328,500	0 HR 35 MIN	1 HR 0 MIN	8 HR 45 MIN	19.23	366.14	4.2	2	134,100	0 HR 55 MIN	1 HR 30 MIN	8 HR 35 MIN	14.97	361.88	2.9					
3	252,900	0 HR 50 MIN	1 HR 15 MIN	12 HR 55 MIN	18.77	348.45	4.4	3	101,900	1 HR 20 MIN	1 HR 45 MIN	12 HR 55 MIN	14.94	344.62	2.9					
4	209,500	0 HR 55 MIN	1 HR 15 MIN	7 HR 55 MIN	11.07	324.76	3.6	4	77,500	1 HR 25 MIN	2 HR 20 MIN	7 HR 5 MIN	7.79	321.48	2.6					
5	181,200	1 HR 20 MIN	1 HR 50 MIN	9 HR 30 MIN	10.58	309.42	4.9	5	67,400	1 HR 55 MIN	2 HR 40 MIN	9 HR 50 MIN	7.67	306.51	3.4					
6	173,500	1 HR 40 MIN	2 HR 5 MIN	9 HR 55 MIN	12.61	290.02	4.1	6	62,000	2 HR 30 MIN	3 HR 0 MIN	9 HR 0 MIN	9.21	286.62	3.2					
7	159,800	1 HR 50 MIN	2 HR 15 MIN	16 HR 30 MIN	16.10	271.48	4.3	7	58,500	2 HR 40 MIN	3 HR 15 MIN	15 HR 25 MIN	13.05	268.43	3.1					
8	149,500	2 HR 10 MIN	2 HR 30 MIN	10 HR 20 MIN	14.58	252.52	4.1	8	52,300	3 HR 10 MIN	3 HR 40 MIN	9 HR 20 MIN	12.10	250.04	2.6					
9	135,800	2 HR 25 MIN	2 HR 50 MIN	7 HR 10 MIN	12.22	233.10	3.3	9	45,100	3 HR 30 MIN	4 HR 0 MIN	6 HR 5 MIN	10.57	231.45	2.3					
10	119,200	2 HR 45 MIN	3 HR 35 MIN	20 HR 30 MIN	14.61	214.23	2.9	10	36,300	3 HR 55 MIN	4 HR 45 MIN	18 HR 10 MIN	12.42	212.04	2.0					
11	87,500	3 HR 40 MIN	4 HR 35 MIN	10 HR 20 MIN	10.02	207.00	2.5	11	30,200	5 HR 50 MIN	7 HR 5 MIN	7 HR 40 MIN	6.69	203.67	1.7					
12	73,100	3 HR 40 MIN	5 HR 0 MIN	18 HR 20 MIN	19.66	192.44	2.1	12	27,600	5 HR 15 MIN	7 HR 45 MIN	17 HR 0 MIN	15.38	188.16	2.2					
13	66,100	3 HR 40 MIN	5 HR 15 MIN	19 HR 10 MIN	18.95	183.11	2.0	13	23,900	4 HR 50 MIN	6 HR 35 MIN	18 HR 0 MIN	14.96	179.12	2.0					
14	64,000	4 HR 0 MIN	5 HR 30 MIN	14 HR 40 MIN	14.84	165.73	2.7	14	22,000	5 HR 20 MIN	6 HR 50 MIN	13 HR 10 MIN	12.74	163.63	1.6					
15	60,200	4 HR 10 MIN	6 HR 15 MIN	34 HR 25 MIN	13.11	152.47	1.5	15	19,600	5 HR 40 MIN	8 HR 0 MIN	30 HR 5 MIN	10.25	149.61	1.0					
16	46,300	5 HR 0 MIN	7 HR 0 MIN	28 HR 15 MIN	7.09	149.84	1.4	16	13,200	6 HR 40 MIN	9 HR 40 MIN	23 HR 35 MIN	4.99	147.74	0.8					
17	30,800	5 HR 30 MIN	8 HR 20 MIN	14 HR 5 MIN	3.04	148.32	0.8	17	10,500	7 HR 0 MIN	9 HR 55 MIN	4 HR 55 MIN	1.50	146.78	1.0					
18	24,000	5 HR 50 MIN	8 HR 50 MIN	45 HR 5 MIN	18.26	146.46	1.2	18	9,300	7 HR 30 MIN	12 HR 0 MIN	35 HR 25 MIN	16.34	144.54	0.9					
19	23,300	6 HR 25 MIN	9 HR 40 MIN	4 HR 20 MIN	19.64	141.43	1.4	19	8,800	8 HR 15 MIN	13 HR 10 MIN	36 HR 10 MIN	17.38	139.17	0.9					
20	11,500	7 HR 5 MIN	15 HR 20 MIN	9 HR 25 MIN	21.29	140.74	0.6	20	5,600	9 HR 5 MIN	17 HR 35 MIN	9 HR 40 MIN	16.24	135.69	0.6					
21	11,400	7 HR 40 MIN	15 HR 45 MIN	9 HR 15 MIN	23.63	138.45	4.9	21	5,500	9 HR 50 MIN	17 HR 50 MIN	9 HR 10 MIN	18.48	133.30	4.0					
22	11,400	8 HR 5 MIN	16 HR 10 MIN	9 HR 15 MIN	24.89	134.84	3.6	22	5,500	10 HR 20 MIN	18 HR 25 MIN	9 HR 10 MIN	20.26	130.21	2.6					
23	11,300	8 HR 55 MIN	16 HR 35 MIN	8 HR 45 MIN	16.72	131.67	6.2	23	5,500	11 HR 20 MIN	18 HR 40 MIN	8 HR 25 MIN	12.85	127.80	5.8					
24	11,300	9 HR 25 MIN	16 HR 50 MIN	8 HR 30 MIN	18.50	120.41	6.4	24	5,500	11 HR 55 MIN	19 HR 0 MIN	8 HR 10 MIN	15.20	117.11	2.6					
25	11,300	10 HR 0 MIN	17 HR 20 MIN	19 HR 25 MIN	6.06	116.03	5.0	25	5,500	12 HR 30 MIN	19 HR 10 MIN	3 HR 5 MIN	1.44	111.41	5.5					
26	11,300	10 HR 20 MIN	17 HR 45 MIN	20 HR 5 MIN	24.00	106.98	2.1	26	5,400	13 HR 0 MIN	19 HR 35 MIN	7 HR 45 MIN	19.22	102.20	1.5					
27	11,200	11 HR 5 MIN	18 HR 0 MIN	39 HR 50 MIN	18.98	99.80	4.3	27	5,400	13 HR 55 MIN	20 HR 15 MIN	37 HR 5 MIN	13.90	94.72	3.7					
28	11,200	11 HR 25 MIN	18 HR 5 MIN	7 HR 50 MIN	19.27	89.21	3.2	28	5,400	14 HR 15 MIN	20 HR 15 MIN	7 HR 10 MIN	16.18	86.12	3.5					
29	11,200	12 HR 10 MIN	18 HR 35 MIN	7 HR 40 MIN	21.50	81.04	2.9	29	5,400	15 HR 15 MIN	20 HR 55 MIN	6 HR 50 MIN	17.75	77.29	3.0					
30	11,200	12 HR 35 MIN	19 HR 5 MIN	7 HR 35 MIN	20.43	73.71	5.5	30	5,400	15 HR 45 MIN	21 HR 30 MIN	41 HR 15 MIN	16.06	69.34	5.6					
31	11,200	13 HR 5 MIN	19 HR 10 MIN	7 HR 15 MIN	16.48	65.29	3.7	31	5,400	Contained within Pajaro River Levees										
32	11,200	13 HR 30 MIN	19 HR 35 MIN	7 HR 15 MIN	16.63	56.55	2.1													
33	11,200	14 HR 30 MIN	19 HR 55 MIN	5 HR 30 MIN	2.86	50.06	1.1													
34	11,100	15 HR 35 MIN	21 HR 30 MIN	8 HR 0 MIN	17.32	45.30	0.8													
35	11,100	16 HR 15 MIN	21 HR 40 MIN	6 HR 30 MIN	18.38	40.56	1.2													
36	11,000	16 HR 30 MIN	22 HR 55 MIN	7 HR 30 MIN	18.21	31.77	0.8													
37	10,600	17 HR 5 MIN	24 HR 25 MIN	8 HR 25 MIN	19.04	26.49	0.9													
38	8,700	17 HR 40 MIN	29 HR 20 MIN	12 HR 45 MIN	17.71	22.02	0.9													
39	7,300	18 HR 25 MIN	30 HR 10 MIN	12 HR 50 MIN	11.24	15.23	0.6													
40	6,800	19 HR 5 MIN	31 HR 45 MIN	13 HR 45 MIN	8.25	12.31	0.7													
41	6,400	24 HR 50 MIN	37 HR 5 MIN	13 HR 20 MIN	6.74	8.77	0.6													


 Santa Clara Valley Water District
 REVIEWED BY:
 ACCEPTED BY:

DATE: APR2016
 DESIGN: JX
 DRAWN: JX
 CHECKED:

AFFECTED JURISDICTIONS:
 Santa Clara County, San Benito County, Santa Cruz County,
 Alameda County, Contra Costa County, Fresno County,
 Merced County, Monterey County, San Bernardino County,
 Stanislaus County, City of San Jose, City of Mountain View, City of
 Gilroy, City of Morgan Hill, City of Watsonville

USGS QUADRANGLES:
 Mountain View, Milpitas, San Jose West, San Jose East,
 Santa Teresa Hills, Morgan Hill, Gilroy, Mount Sizer, Mount
 Madonna, Chittenden, San Felipe, Watsonville East,
 Watsonville West, Moss Landing

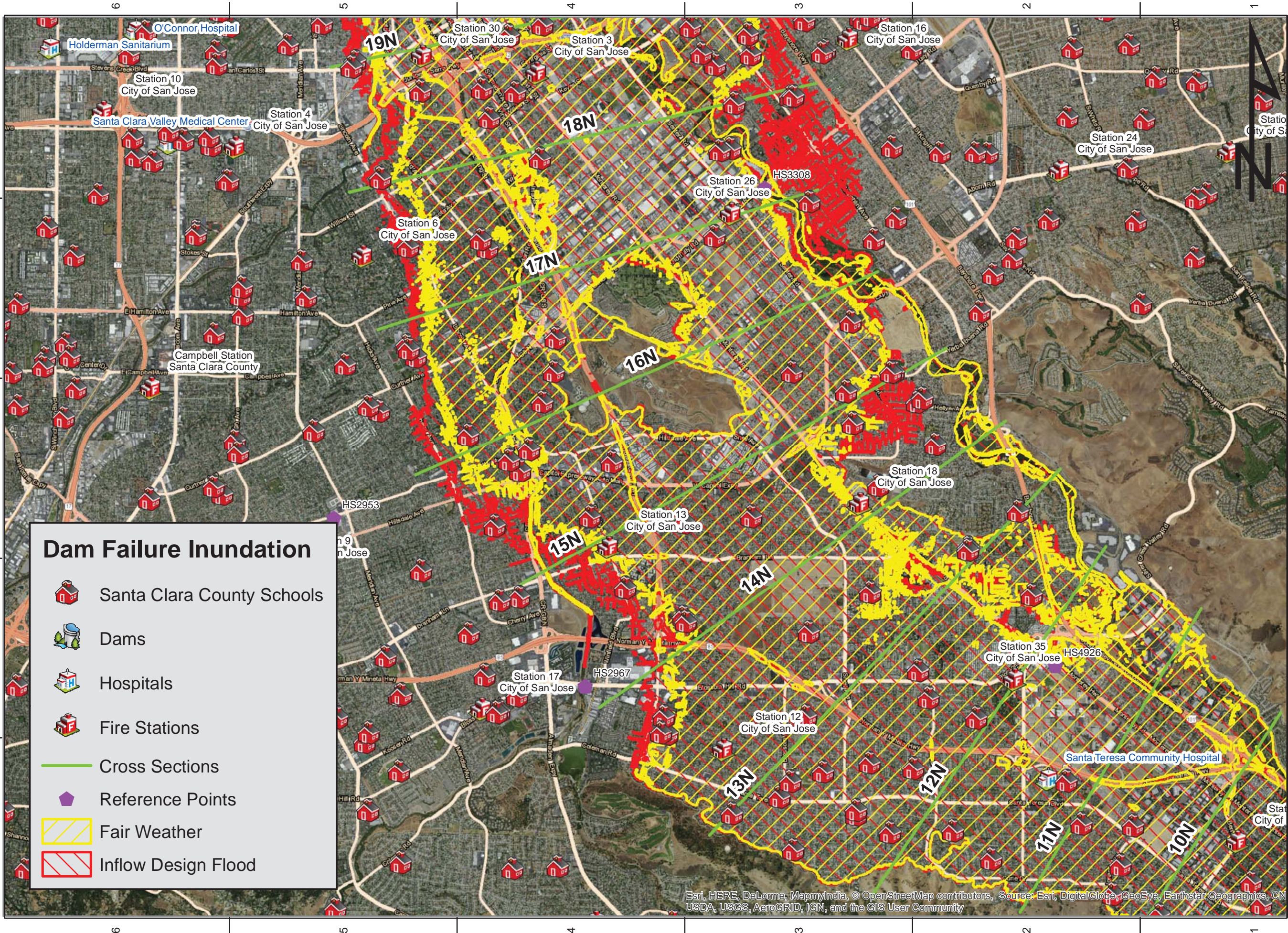


FINAL DRAFT Santa Clara Valley Water District ACCEPTED BY: _____ REVIEWED BY: _____		LEROY ANDERSON DAM FLOOD INUNDATION MAPS CA DWR DAM ID# 72-009 SANTA CLARA COUNTY	SANTA CLARA VALLEY WATER DISTRICT 5750 ALMADEN EXPWY SAN JOSE, CA 95118-3614 (408) 265-2600	SCALE 1" = 4000' SHEET 4
DATE APR2016	DESIGN JX	DRAWN JX	CHECKED JX	AFFECTED JURISDICTIONS: Santa Clara County, San Benito County, Santa Cruz County, Monterey County, City of San Jose, City of Santa Clara, City of Milpitas, City of Sunnyvale, City of Mountain View, City of Gilroy, City of Morgan Hill, City of Watsonville
USGS QUADRANGLES: San Jose West, San Jose East, Mountain View, Milpitas, San Jose, Mountain View, Mount Madison, Chittenden, San Francisco, Watsonville East, Watsonville West, Moss Landing				

Dam Failure Inundation

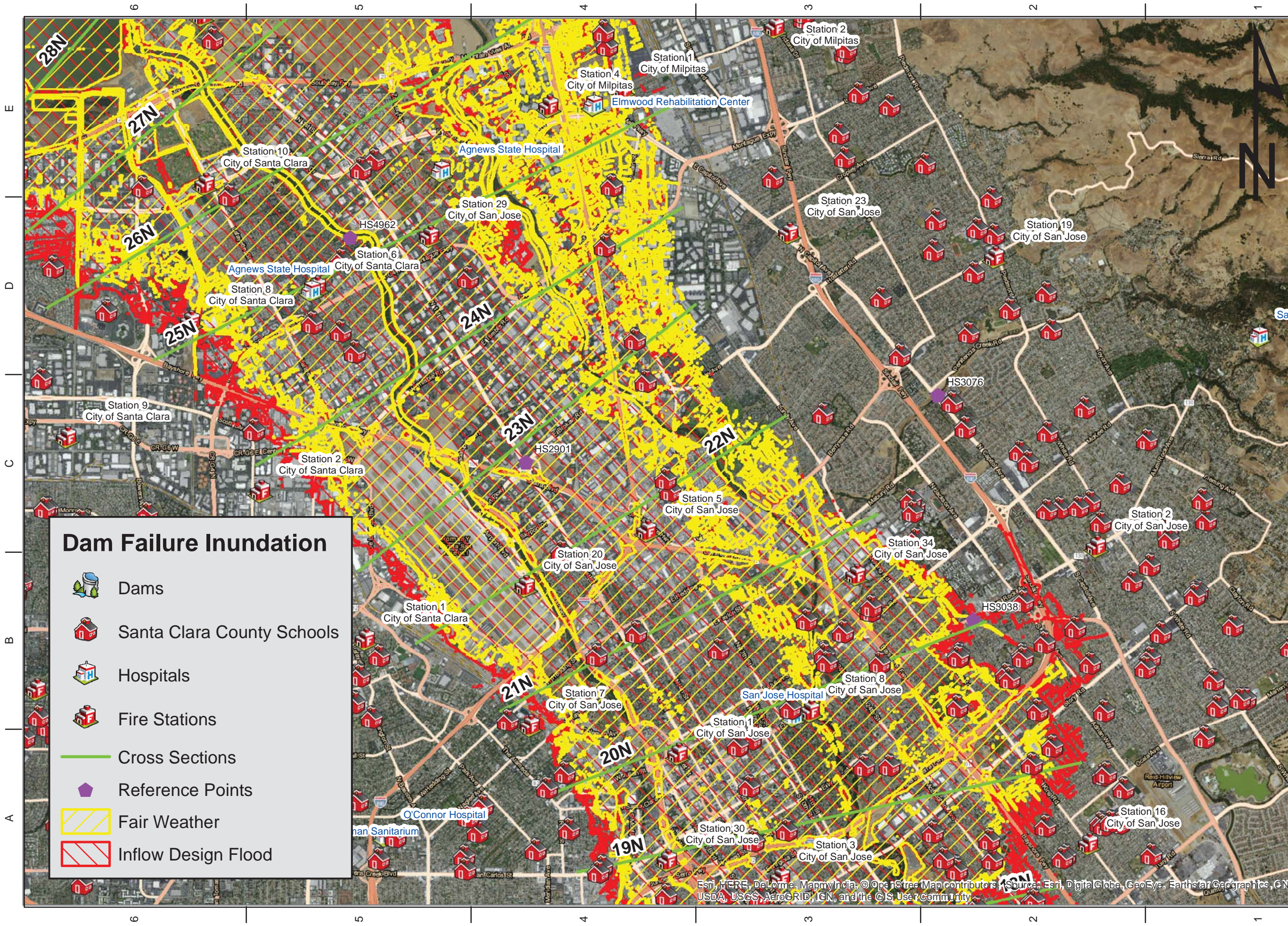
- Santa Clara County Schools
- Dams
- Hospitals
- Fire Stations
- Cross Sections
- Reference Points
- Fair Weather
- Inflow Design Flood

Esri, HERE, DeLorme, MapmyIndia, © OpenStreetMap contributors, Source: Esri, DigitalGlobe, GeoEye, Earthstar Geographics, CN
 USDA, USGS, AeroGRID, IGN, and the GIS User Community



SCALE 1" = 4000'		SHEET 5	
SANTA CLARA VALLEY WATER DISTRICT		5750 ALMADEN EXPWY SAN JOSE, CA 95118-3614 (408) 265-2800	
LEROY ANDERSON DAM FLOOD INUNDATION MAPS			
CA DWR DAM ID# 72-009 SANTA CLARA COUNTY			
FINAL DRAFT		REVIEWED BY:	
ACCEPTED BY:		DATE	
DESIGN	JX	APR 2016	
DRAWN	JX		
CHECKED			
<small>AFFECTED JURISDICTIONS: Santa Clara County, San Benito County, Santa Cruz County, Monterey County, City of San Jose, City of Santa Clara, City of Milpitas, City of Sunnyvale, City of Mountain View, City of Gilroy, City of Morgan Hill, City of Watsonville</small> <small>USGS QUADRANGLES: Mountain View, Milpitas, San Jose West, San Jose East, Santa Teresa Hills, Morgan Hill, Gilroy, Mount Sizer, Mount Madonna, Chirenden, San Felipe, Watsonville East, Watsonville West, Moss Landing</small>			

Esri, HERE, DeLorme, MapmyIndia, © OpenStreetMap contributors, Source: Esri, DigitalGlobe, GeoEye, Earthstar Geographics, CN



Dam Failure Inundation

- Dams
- Santa Clara County Schools
- Hospitals
- Fire Stations
- Cross Sections
- Reference Points
- Fair Weather
- Inflow Design Flood

SCALE
1" = 4000'
SHEET
6

SANTA CLARA
VALLEY WATER
DISTRICT
5750 ALMADEN EXPWY
SAN JOSE, CA
95118-3614
(408) 265-7260

**LEROY ANDERSON DAM
FLOOD INUNDATION MAPS**
CA DWR DAM ID# 72-009
SANTA CLARA COUNTY

FINAL DRAFT Santa Clara Valley Water District
REVIEWED BY:
ACCEPTED BY:

DATE	DESIGN	DRAWN	CHECKED
	JX	JX	

AFFECTED JURISDICTIONS:
Santa Clara County, San Benito County, Santa Cruz County,
Monterey County, City of San Jose, City of Santa Clara, City
of Milpitas, City of Sunnyvale, City of Mountain View, City of
Gilroy, City of Morgan Hill, City of Watsonville
USGS QUADRANGLES:
Mountain View, Milpitas, San Jose West, San Jose East,
Santa Teresa Hills, Morgan Hill, Gilroy, Mount Sizer, Mount
Diablo, Watsonville, Watsonville East,
Watsonville West, Moss Landing

Esri, HERE, DeLorme, MapmyIndia, © OpenStreetMap contributors, Source: Esri, DigitalGlobe, GeoEye, Earthstar Geographics, CN
USDA, USGS, AeroGRID, IGN, and the GIS User Community

Dam Failure Inundation

- Dams
- Santa Clara County Schools
- Hospitals
- Fire Stations
- Cross Sections
- Reference Points
- Fair Weather
- Inflow Design Flood

SCALE
1" = 4000'
SHEET
7

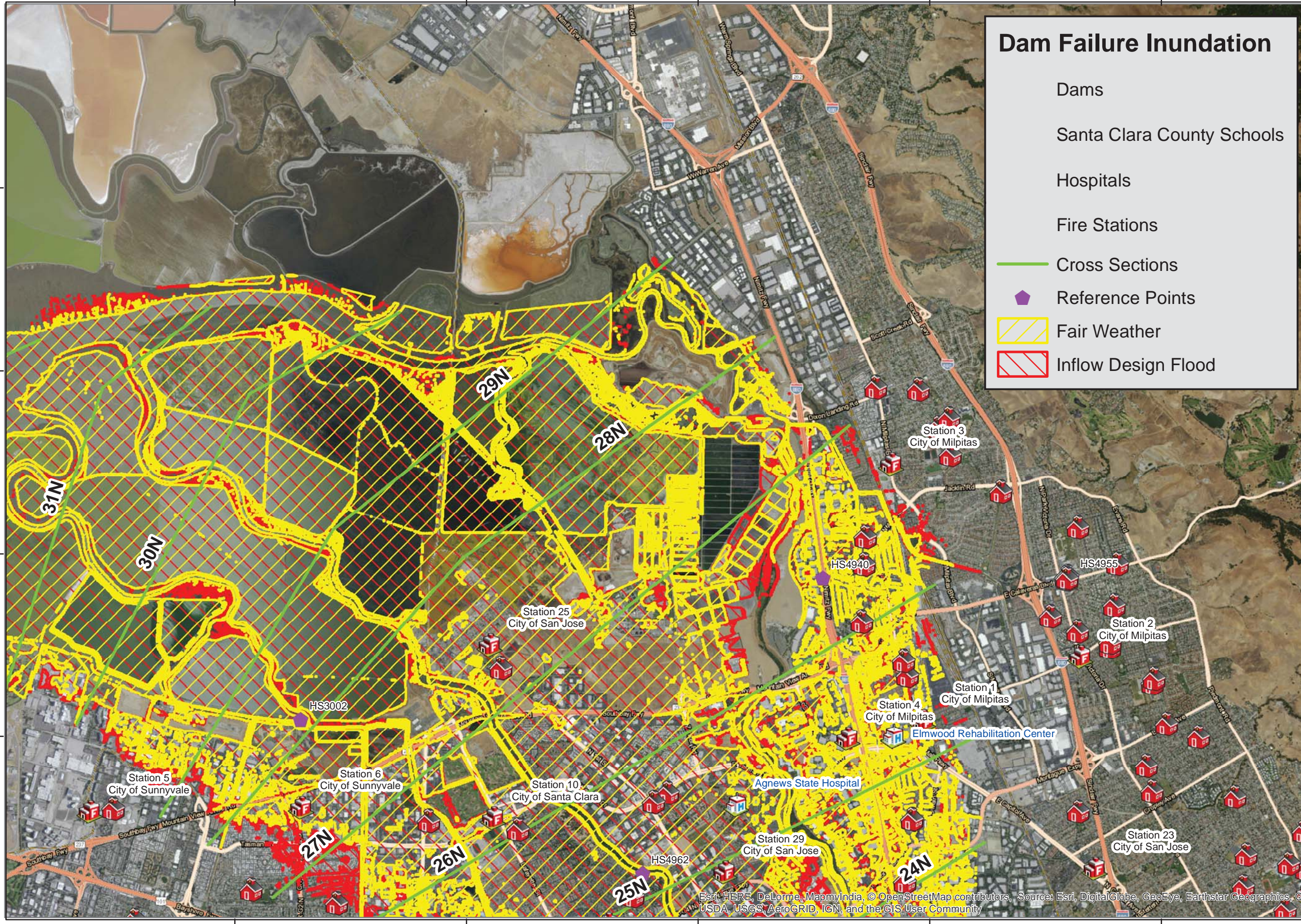
SANTA CLARA VALLEY WATER DISTRICT
5750 ALMADEN EXPWY
SAN JOSE, CA 95118-3614
(408) 265-7260

LEROY ANDERSON DAM FLOOD INUNDATION MAPS
CA DWR DAM ID# 72-009
SANTA CLARA COUNTY





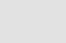



FINAL DRAFT
ACCEPTED BY:
REVIEWED BY:

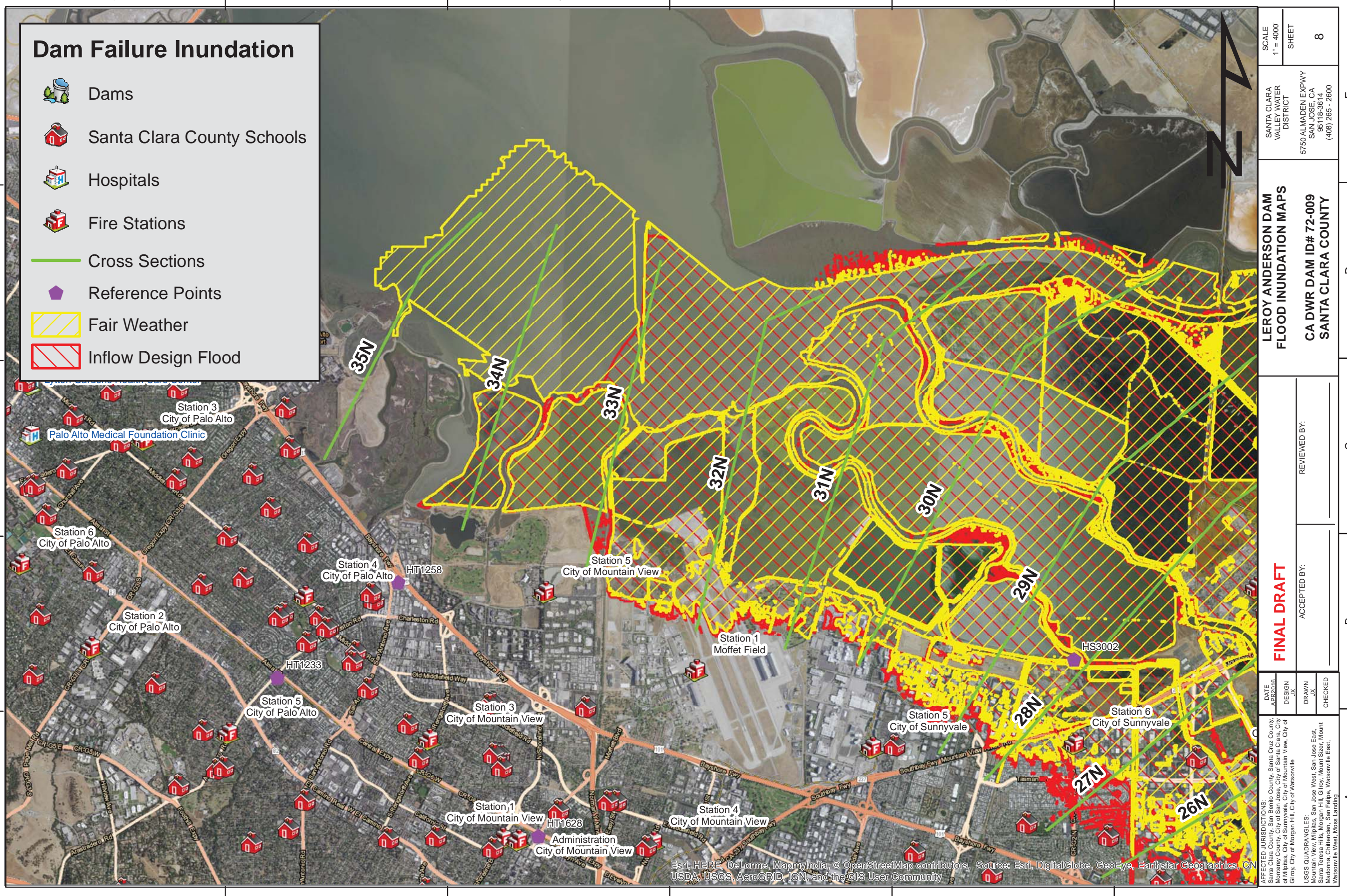
DATE APPROB APR2016
DESIGN JX
DRAWN JWA
CHECKED

AFFECTED JURISDICTIONS:
Mountain View, Milpitas, San Jose West, San Jose East, Santa Clara County, San Benito County, Santa Cruz County, Santa Clara County, City of San Jose, City of Mountain View, City of Milpitas, City of Sunnyvale, City of Watsonville, City of Gilroy, City of Morgan Hill, City of Watsonville
USGS QUADRANGLES:
Mountain View, Milpitas, San Jose West, San Jose East, Mountain View, Milpitas, Morgan Hill, Mount Sizer, Mount Sizer, Chiles, Chiles, Watsonville East, Watsonville West, Moss Landing



Dam Failure Inundation

-  Dams
-  Santa Clara County Schools
-  Hospitals
-  Fire Stations
-  Cross Sections
-  Reference Points
-  Fair Weather
-  Inflow Design Flood



SCALE
1" = 4000'
SHEET
8

SANTA CLARA
VALLEY WATER
DISTRICT
5750 ALMADEN EXPWY
SAN JOSE, CA
95118-3614
(408) 265-2600

**LEROY ANDERSON DAM
FLOOD INUNDATION MAPS**
CA DWR DAM ID# 72-009
SANTA CLARA COUNTY

ACCEPTED BY:

REVIEWED BY:

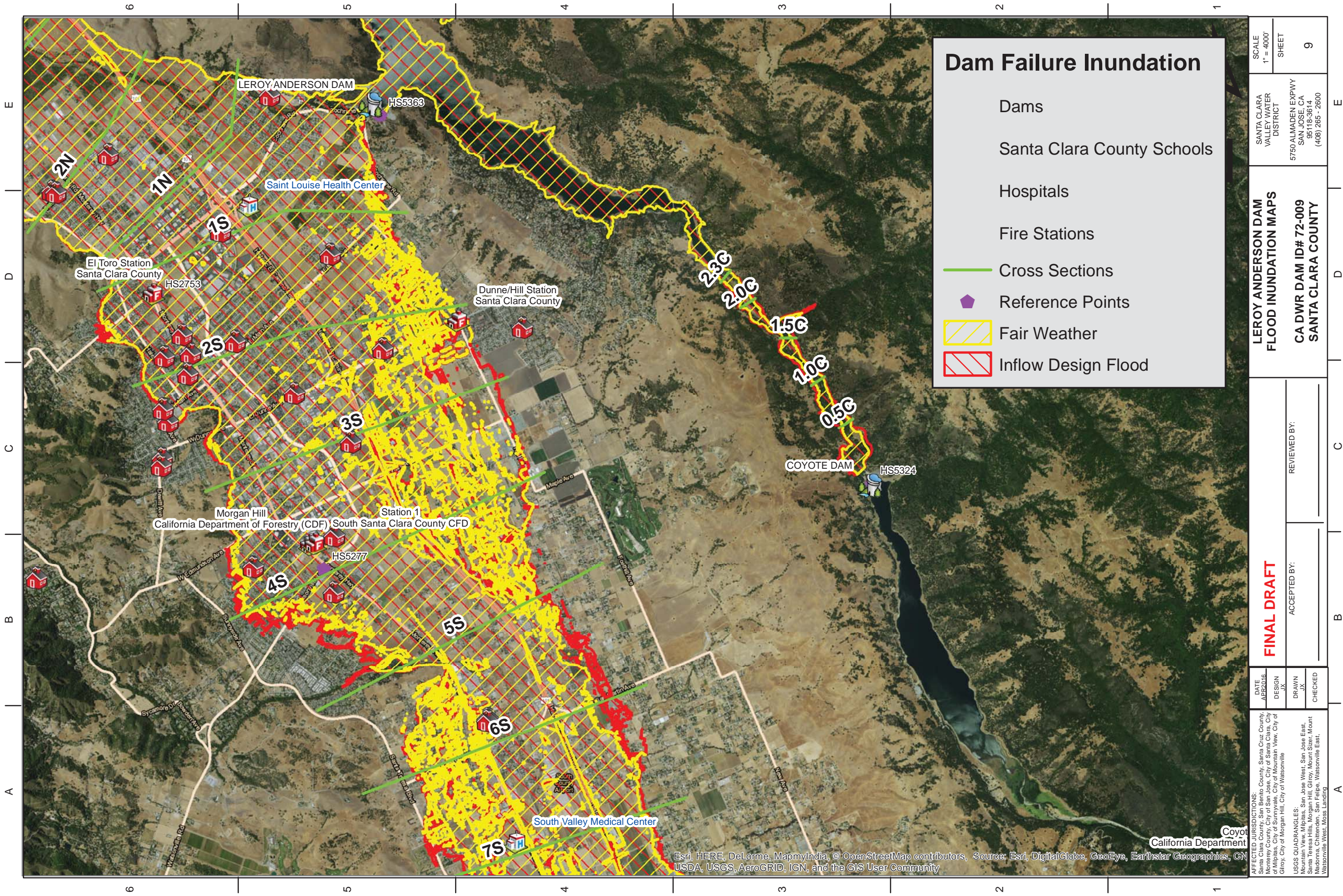
FINAL DRAFT

DATE APR2016	DESIGN JX	DRAWN	CHECKED
-----------------	--------------	-------	---------

AFFECTED JURISDICTIONS:
Santa Clara County, San Benito County, Santa Cruz County,
Monterey County, City of San Jose, City of Santa Clara, City
of Milpitas, City of Sunnyvale, City of Mountain View, City of
Gilroy, City of Morgan Hill, City of Watsonville

USGS QUADRANGLES: San Jose West, San Jose East,
Mountain View, Milpitas, San Jose, Mountain View, Mount
Diablo, Morgan Hill, Mountain View, Mountain View East,
Chico, Watsonville, Watsonville East,
Watsonville West, Moss Landing

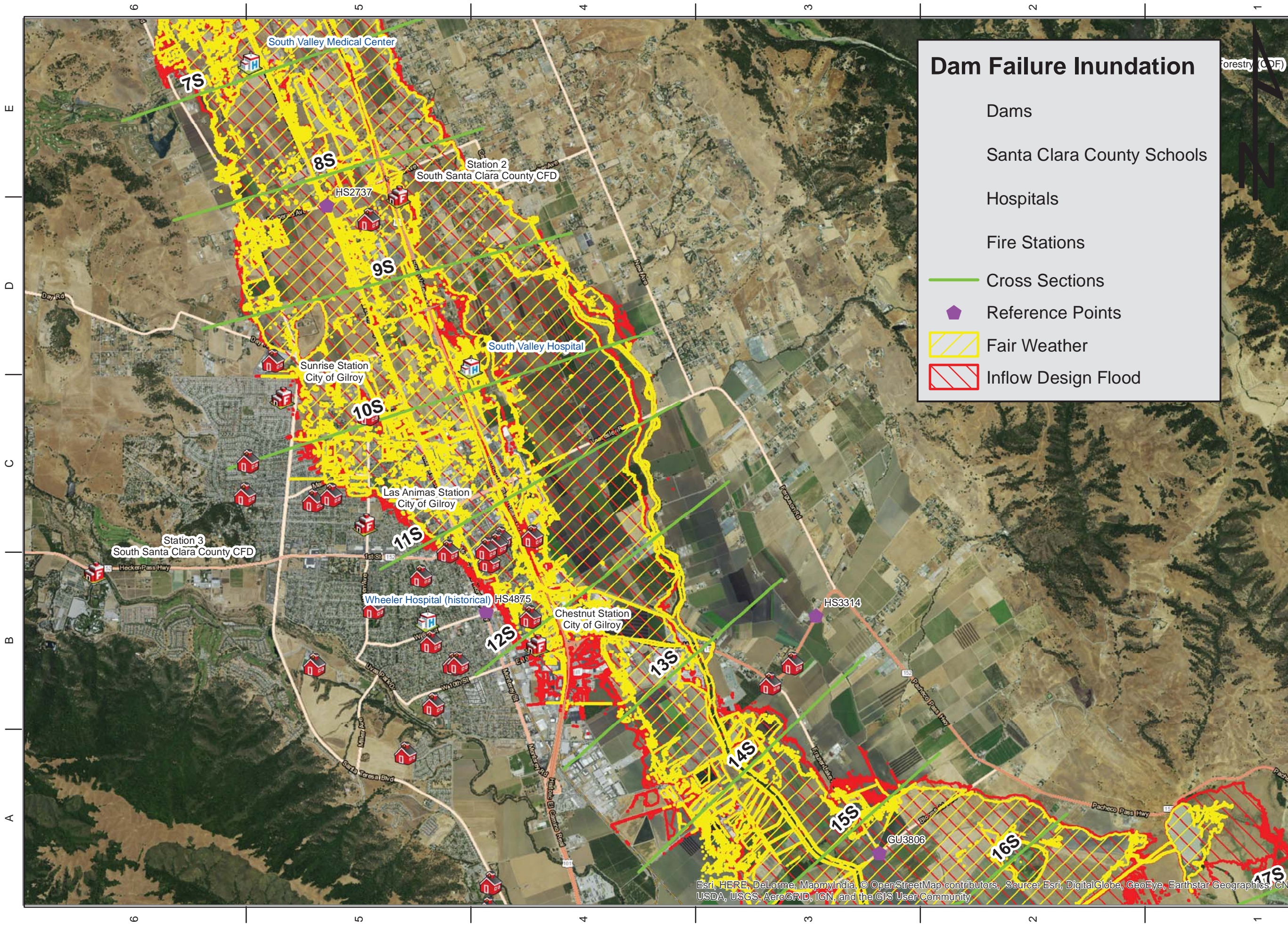
Esri, HERE, DeLorme, MapmyIndia, © OpenStreetMap contributors, Sotree: Esri, DigitalGlobe, GeoEye, Earthstar Geographics, CN
USDA, USGS, AeroGRID, IGN, and the GIS User Community



Dam Failure Inundation

- Dams
- Santa Clara County Schools
- Hospitals
- Fire Stations
- Cross Sections
- Reference Points
- Fair Weather
- Inflow Design Flood

SCALE 1" = 4000'	SHEET 9
SANTA CLARA VALLEY WATER DISTRICT	5750 ALMADEN EXPWY SAN JOSE, CA 95118-3614 (408) 265-7260
LERROY ANDERSON DAM FLOOD INUNDATION MAPS	CA DWR DAM ID# 72-009 SANTA CLARA COUNTY
FINAL DRAFT	ACCEPTED BY:
DATE: APR2016	DESIGN: JX
DRAWN: JXA	CHECKED:
AFFECTED JURISDICTIONS: Santa Clara County, San Benito County, Santa Cruz County, Monterey County, City of San Jose, City of Santa Clara, City of Milpitas, City of Sunnyvale, City of Mountain View, City of Gilroy, City of Morgan Hill, City of Watsonville	USGS QUADRANGLES: Mountain View, Milpitas, San Jose West, San Jose East, Mountain View, Morgan Hill, Morgan Hill East, Morgan Hill West, Morgan Hill South, Morgan Hill North, Morgan Hill East, Watsonville East, Watsonville West, Moss Landing





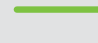





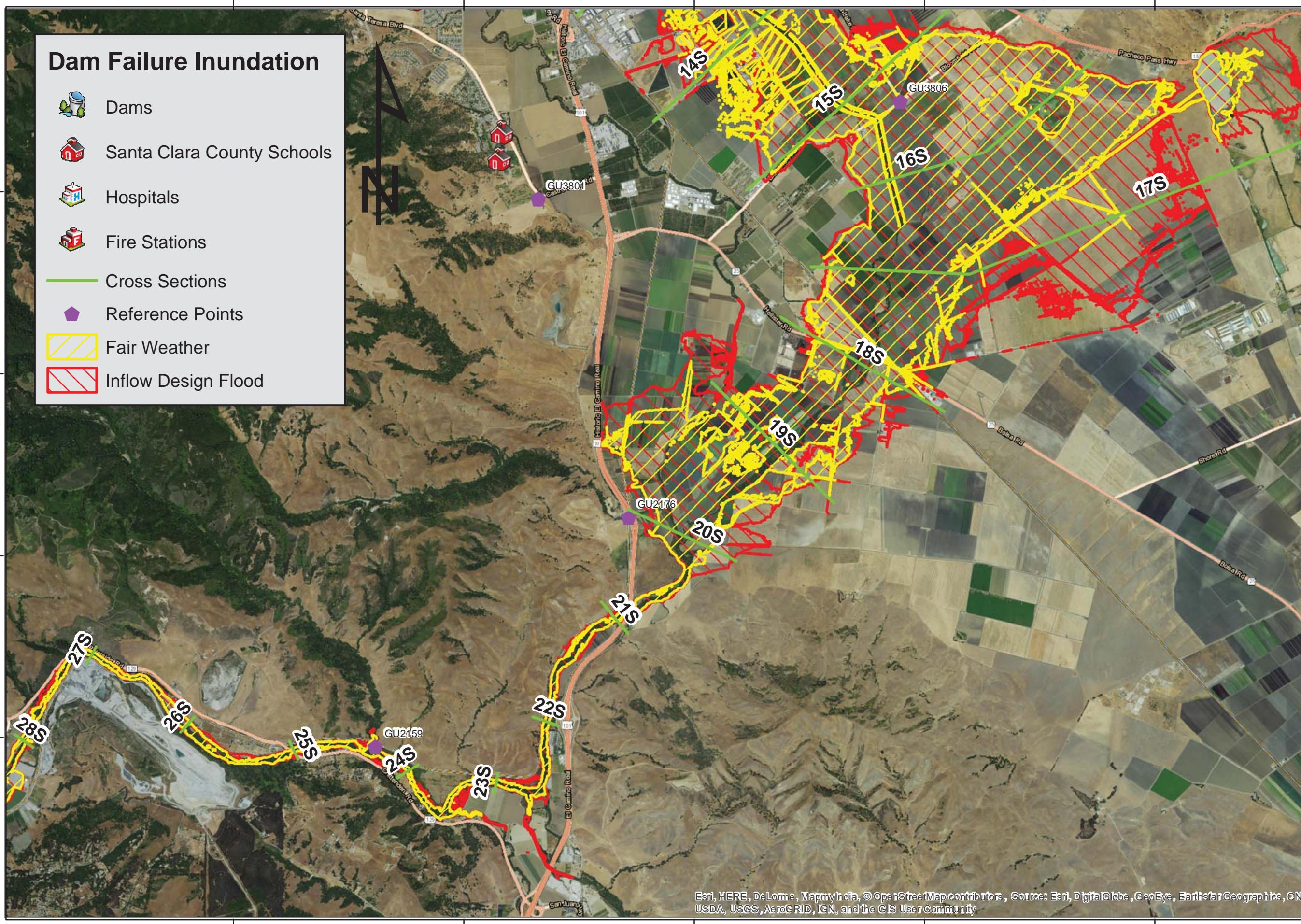
Dam Failure Inundation

- Dams
- Santa Clara County Schools
- Hospitals
- Fire Stations
- Cross Sections
- Reference Points
- Fair Weather
- Inflow Design Flood

SCALE 1" = 4000'	SHEET 10	SANTA CLARA VALLEY WATER DISTRICT	5750 ALMADEN EXPWY SAN JOSE, CA 95118-3614 (408) 265-2600
FINAL DRAFT		LERROY ANDERSON DAM FLOOD INUNDATION MAPS	
ACCEPTED BY:		REVIEWED BY:	
DATE APR2016	DESIGN JX	DRAWN JX	CHECKED JX
AFFECTED JURISDICTIONS: San Jose West, San Jose East, Mountain View, Milpitas, San Benito County, Santa Cruz County, Santa Clara County, City of San Jose, City of Santa Clara, City of Milpitas, City of Sunnyvale, City of Mountain View, City of Gilroy, City of Morgan Hill, City of Watsonville			
USGS QUADRANGLES: San Jose West, San Jose East, Mountain View, Milpitas, Morgan Hill, Mount Sizer, Mount Merced, Morgan Hill, Watsonville East, Watsonville West, Moss Landing			

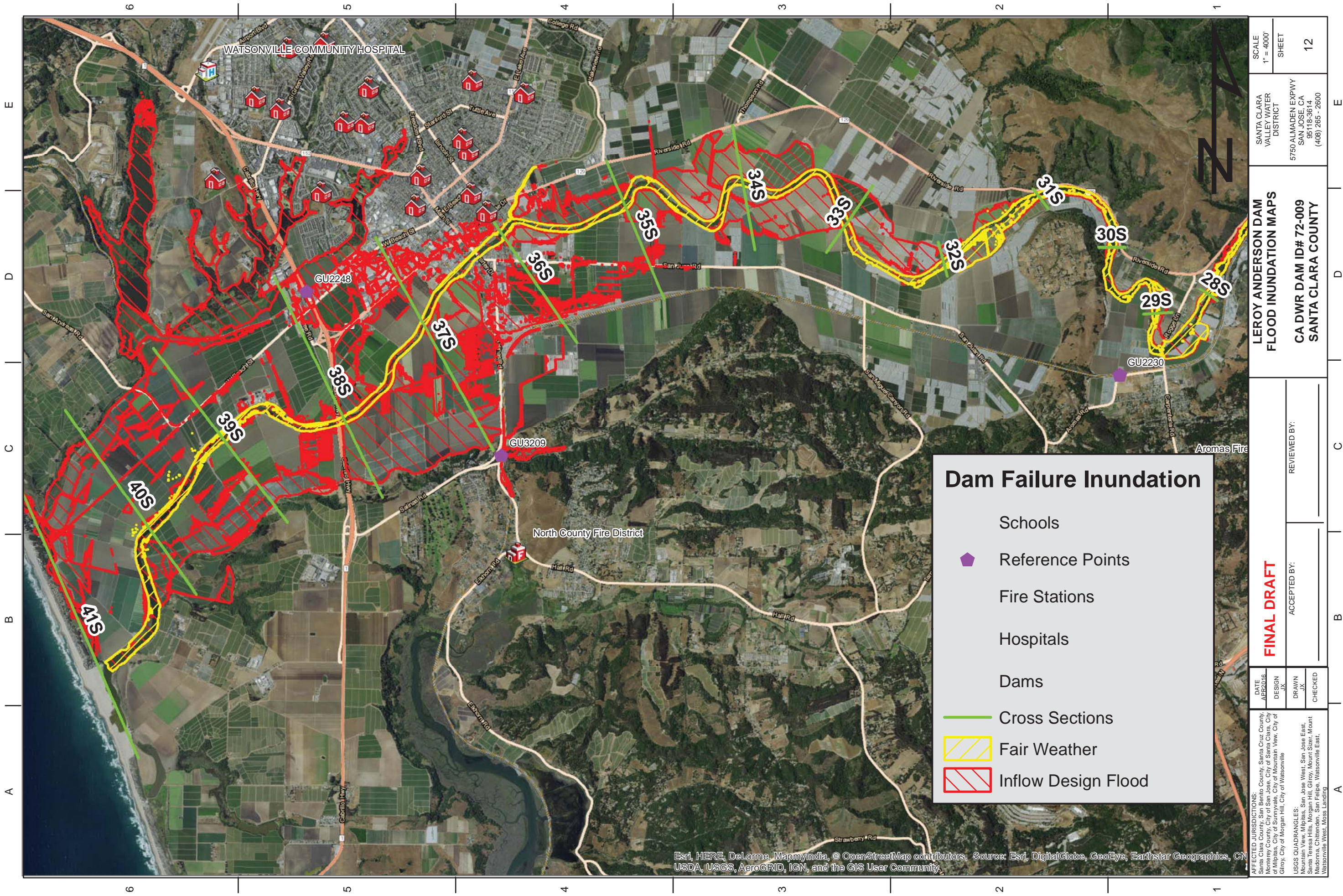
Dam Failure Inundation

-  Dams
-  Santa Clara County Schools
-  Hospitals
-  Fire Stations
-  Cross Sections
-  Reference Points
-  Fair Weather
-  Inflow Design Flood



Esri, HERE, DeLorme, MapmyIndia, © OpenStreetMap contributors, Source: Esri, DigitalGlobe, GeoEye, Earthstar Geographics, CN
USDA, USGS, AeroGRID, IGN, and the GIS User Community

FINAL DRAFT		Santa Clara Valley Water District	REVIEWED BY:
ACCEPTED BY:		REVIEWED BY:	
DATE APPROB	DESIGN JX	DRAWN JX	CHECKED
AFFECTED JURISDICTIONS: Santa Clara County, San Benito County, Santa Cruz County, Monterey County, City of San Jose, City of Santa Clara, City of Milpitas, City of Sunnyvale, City of Mountain View, City of Gilroy, City of Morgan Hill, City of Watsonville			
USGS QUADRANGLES: Mountain View, Milpitas, San Jose West, San Jose East, Santa Teresa Hills, Morgan Hill, Gilroy, Mount Sizer, Mount Sizer, Watsonville East, Watsonville West, Moss Landing			
SCALE 1" = 4000'		SHEET 11	
SANTA CLARA VALLEY WATER DISTRICT		5750 ALMADEN EXPWY SAN JOSE, CA 95118-3614 (408) 265 - 2600	
LEROY ANDERSON DAM FLOOD INUNDATION MAPS		CA DWR DAM ID# 72-009 SANTA CLARA COUNTY	



Dam Failure Inundation

- Schools
- Reference Points
- Fire Stations
- Hospitals
- Dams
- Cross Sections
- Fair Weather
- Inflow Design Flood

<p>FINAL DRAFT</p>	<p>REVIEWED BY:</p>	<p>ACCEPTED BY:</p>	<p>SCALE 1" = 4000' SHEET 12</p>
<p>LEROY ANDERSON DAM FLOOD INUNDATION MAPS</p>		<p>SANTA CLARA VALLEY WATER DISTRICT</p> <p>5750 ALMADEN EXPWY SAN JOSE, CA 95118-3614 (408) 265-2600</p>	
<p>DATE APR2016</p>		<p>DESIGN JX</p>	
<p>DRAWN JA</p>		<p>CHECKED</p>	
<p>AFFECTED JURISDICTIONS: Santa Clara County, San Benito County, Santa Cruz County, Santa Clara County, City of San Jose, City of Santa Clara, City of Milpitas, City of Sunnyvale, City of Mountain View, City of Gilroy, City of Morgan Hill, City of Watsonville</p> <p>USGS QUADRANGLES: San Jose West, San Jose East, Mountain View, Milpitas, San Jose, Morgan Hill, Mount Sizer, Mount Sizer, Morgan Hill, Morgan Hill, Watsonville East, Watsonville West, Moss Landing</p>			

Esri, HERE, DeLorme, MapmyIndia, © OpenStreetMap contributors, Source: Esri, DigitalGlobe, GeoEye, Earthstar Geographics, CN USDA, USGS, AeroGRID, IGN, and the GIS User Community