



# Anderson Dam Seismic Retrofit Project Update

Morgan Hill Public Meeting | April 10, 2019



# Agenda

- ▶ **Project Components**
- ▶ **Key Project Impacts**
- ▶ **Ongoing Investigations and CEQA Studies**
- ▶ **Q&A**



# Project Components

# Anderson Dam Existing Configuration

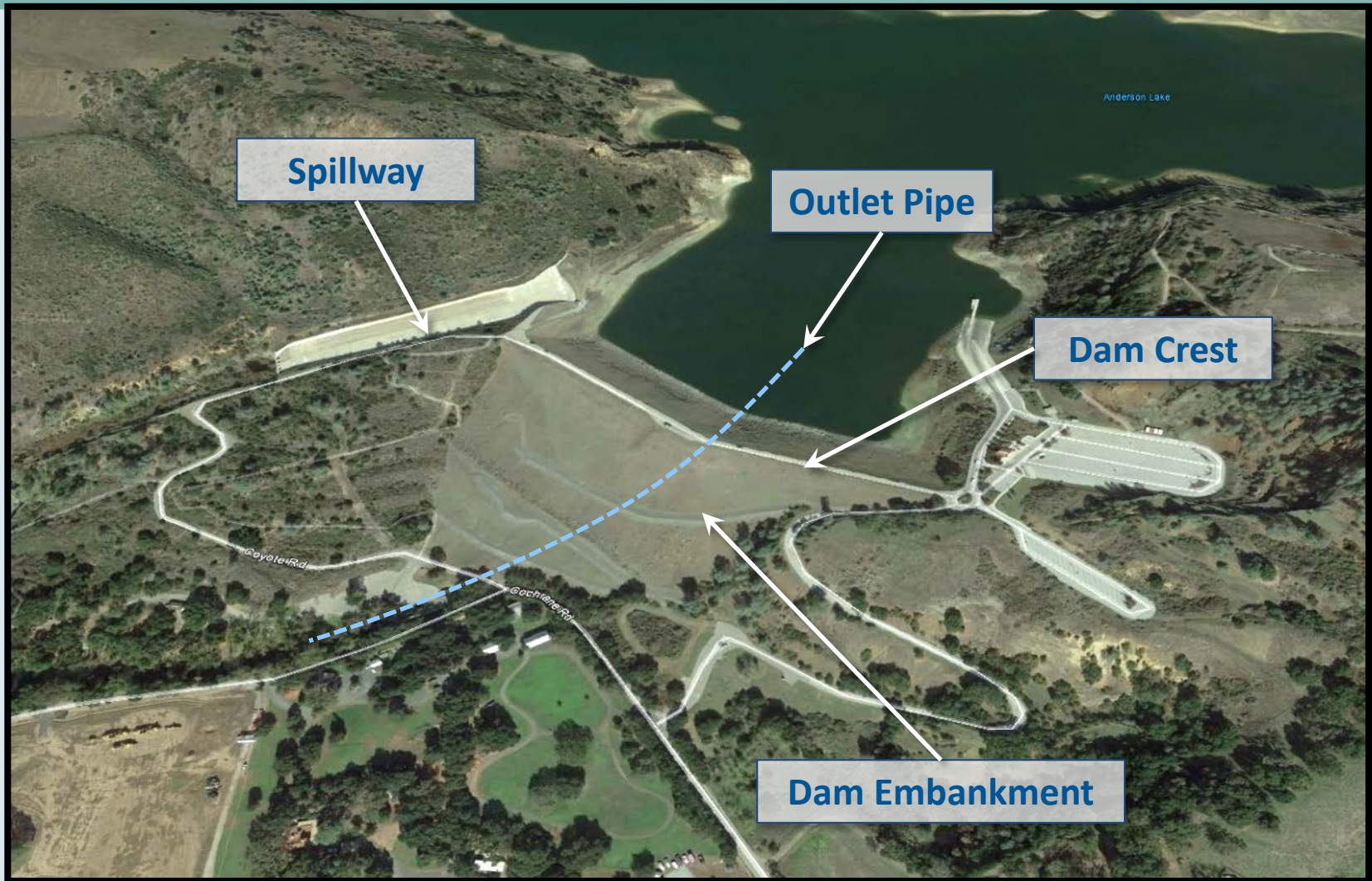
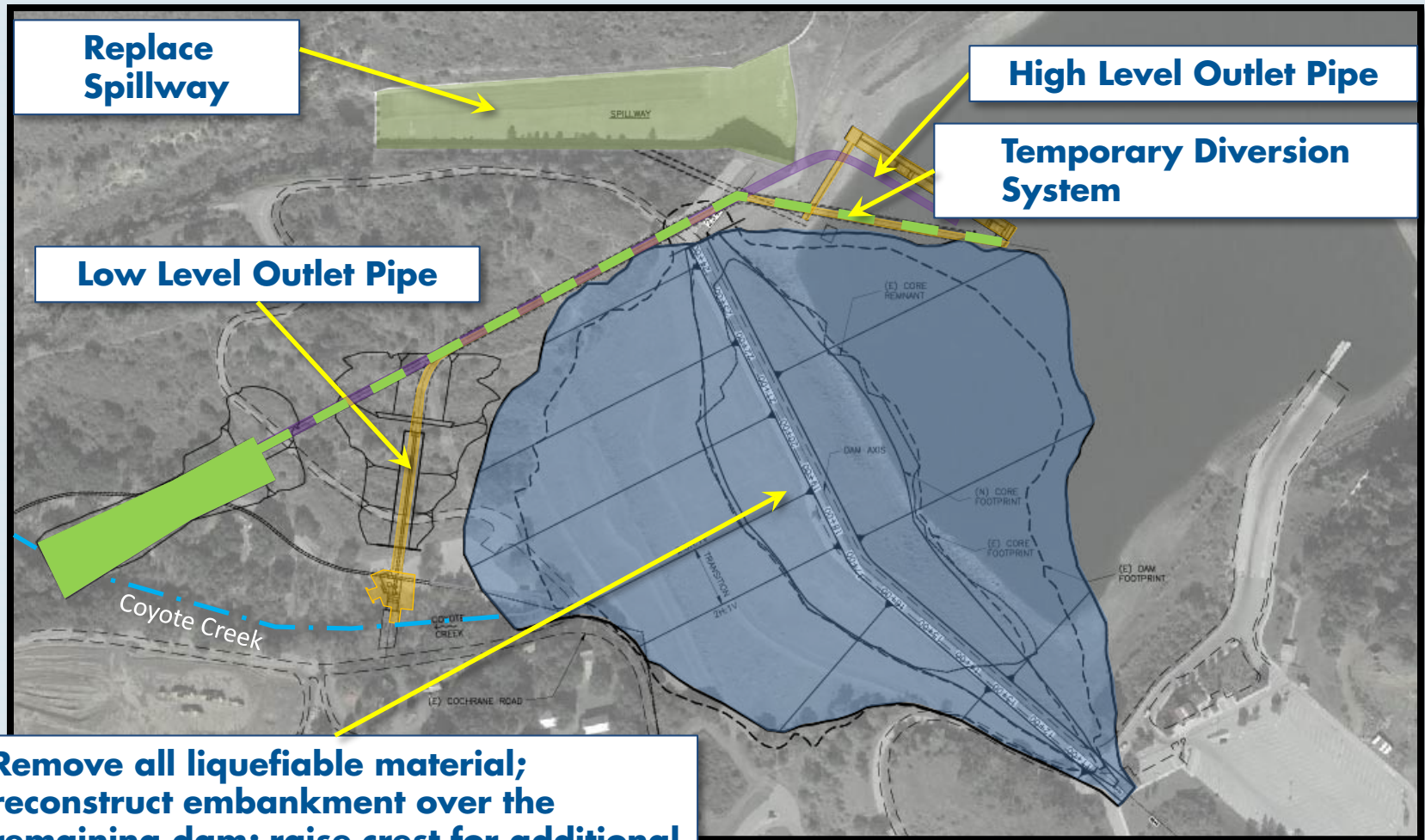


Image Source: Google Earth

# Project Components

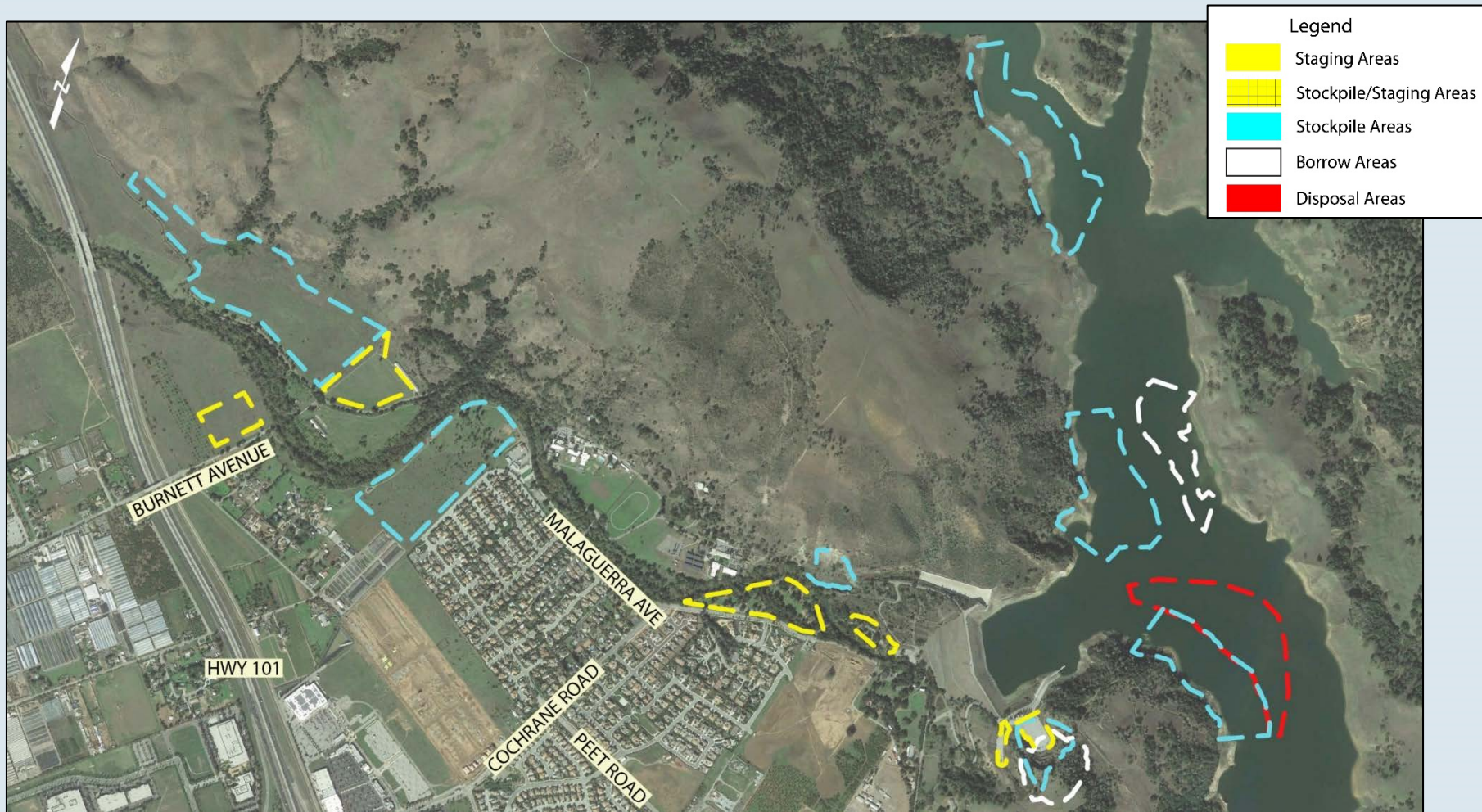


**Remove all liquefiable material;  
reconstruct embankment over the  
remaining dam; raise crest for additional  
freeboard**

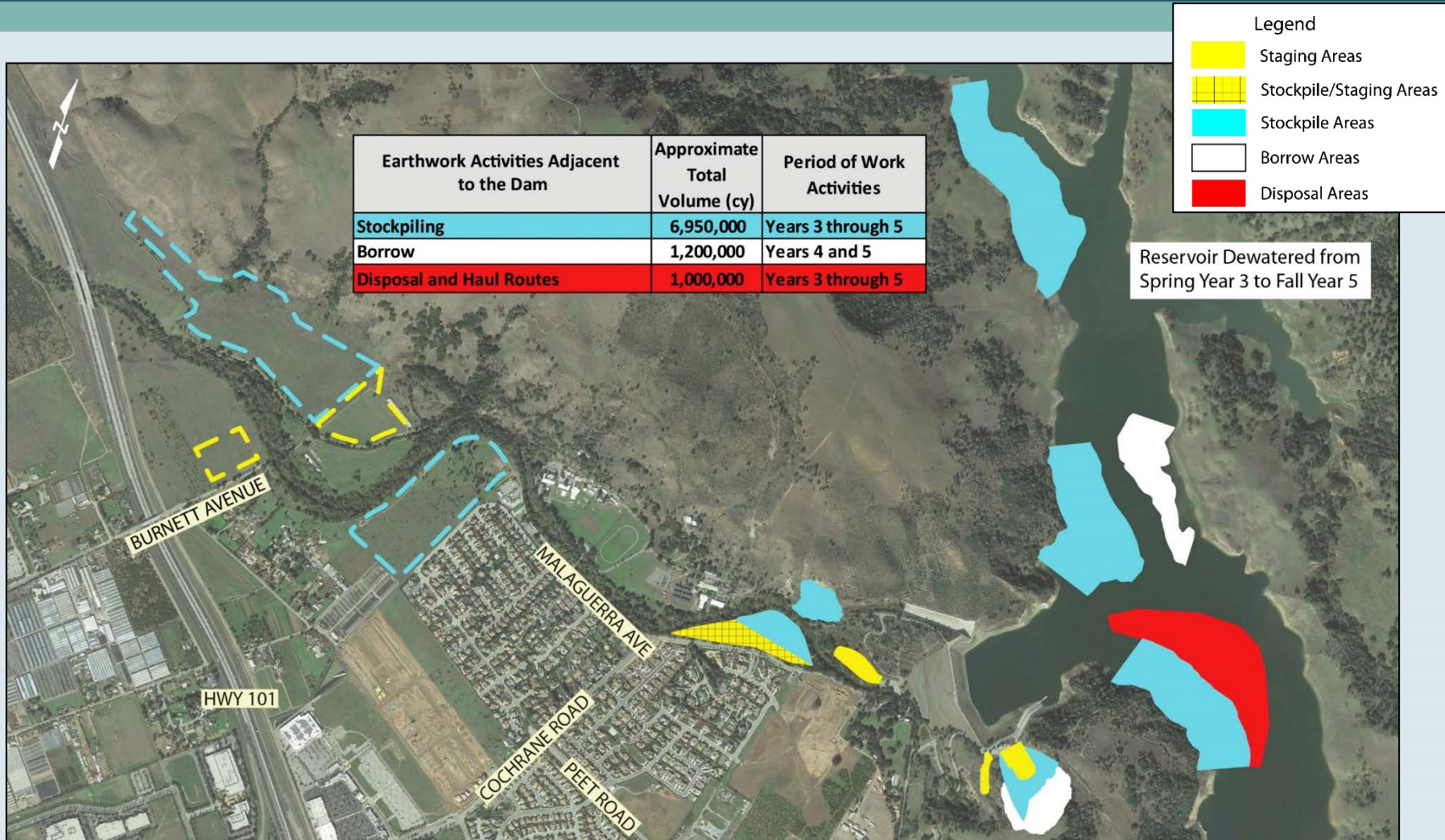


# Key Project Impacts

# Project Impacts - Overview

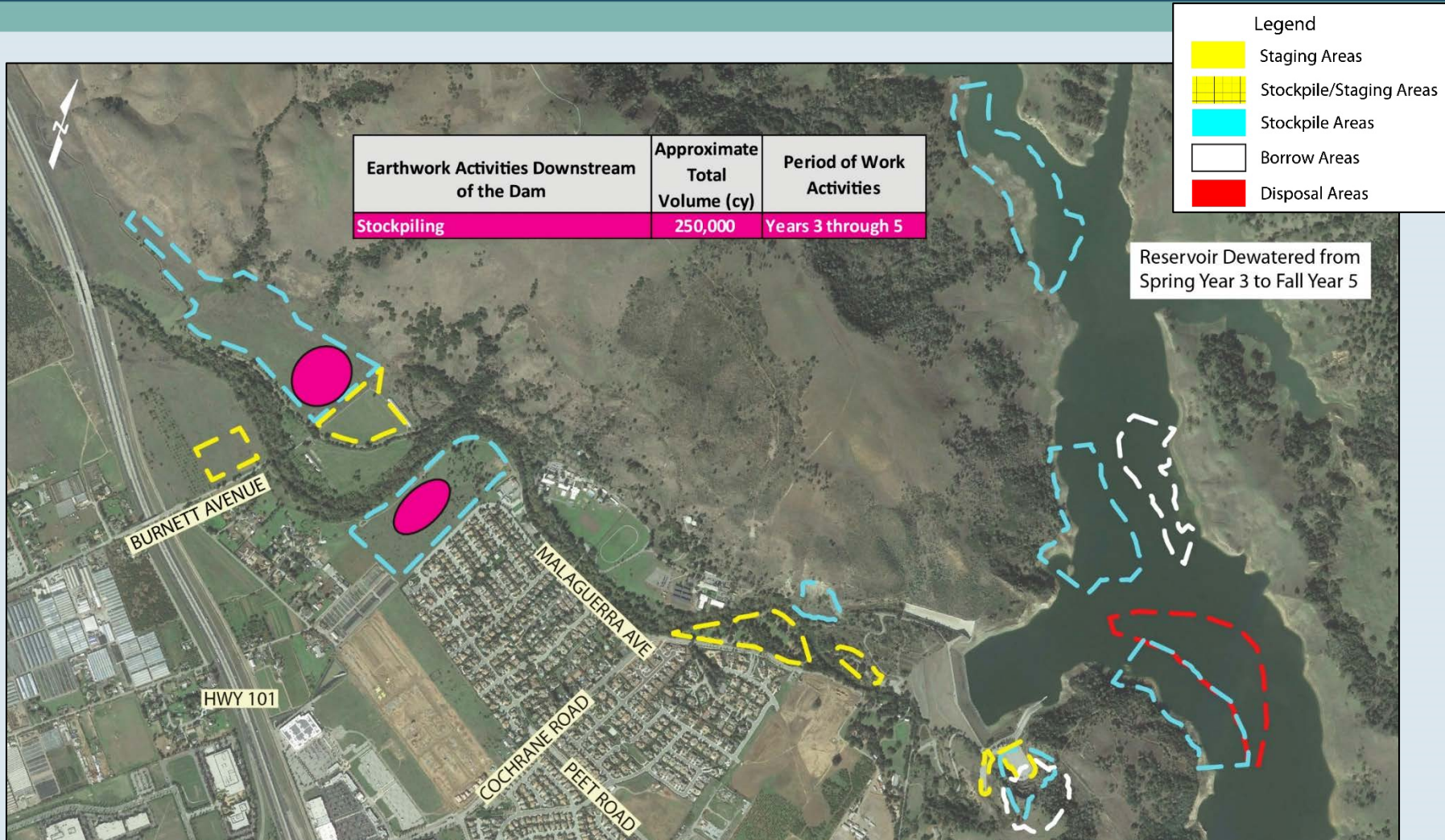


# Project Impacts – Adjacent to/in Reservoir

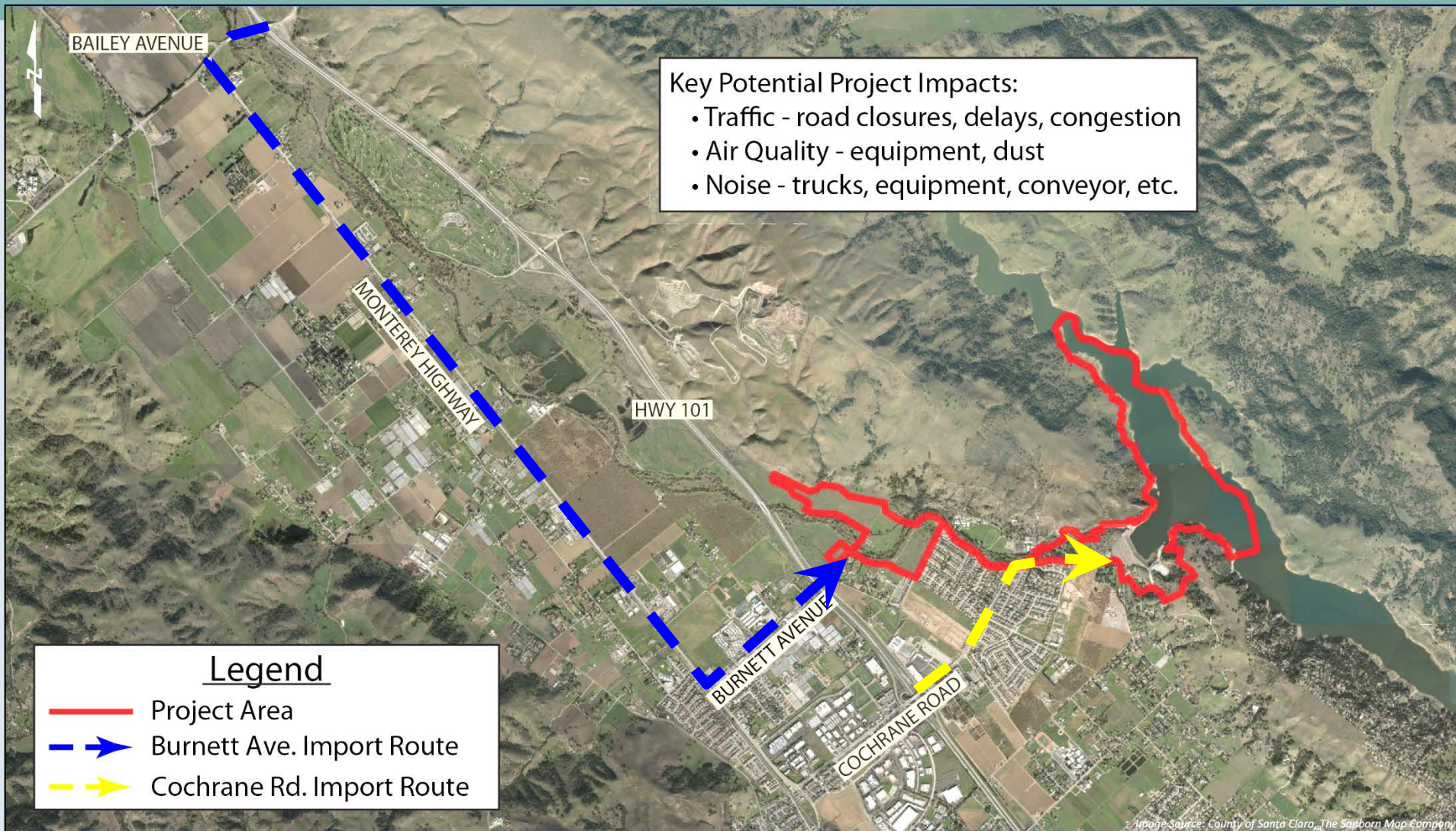




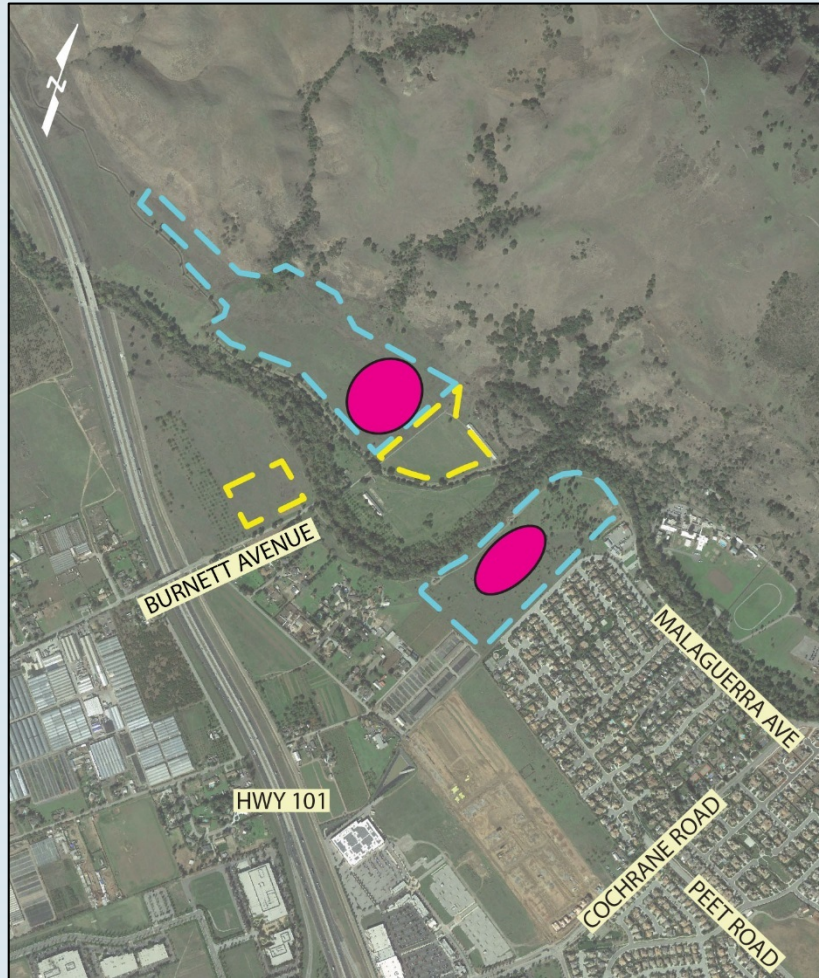
# Project Impacts – Downstream



# Import Materials Project Impacts

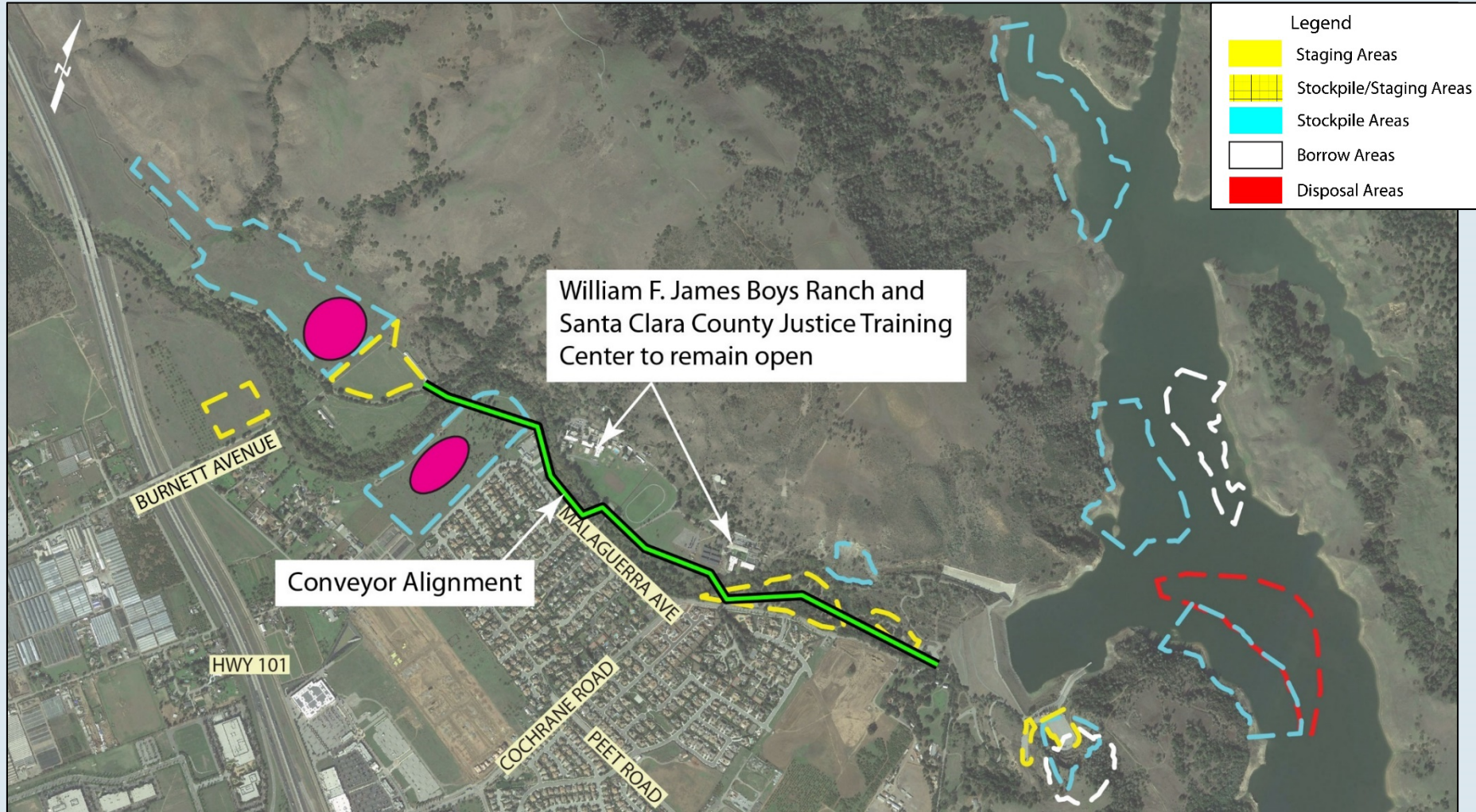


# Project Impacts - Conveyor

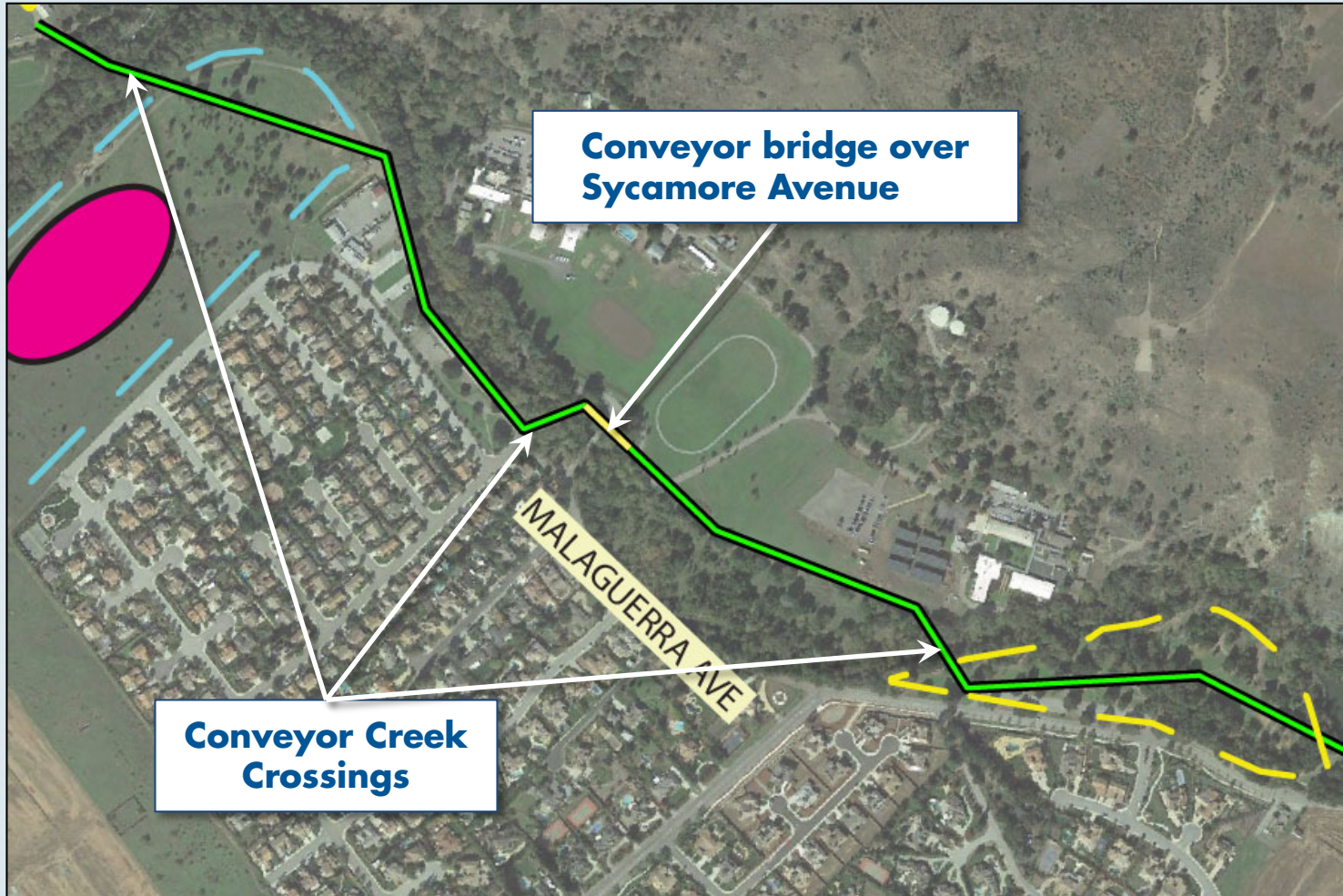


- ▶ **~250,000 cy of import material to be stockpiled downstream and will need to be transported to the dam via a conveyor or trucks**
- ▶ **Conveyor or trucks would be used April through October of Construction Years 4 and 5**
- ▶ **Three conceptual alternatives are being considered**

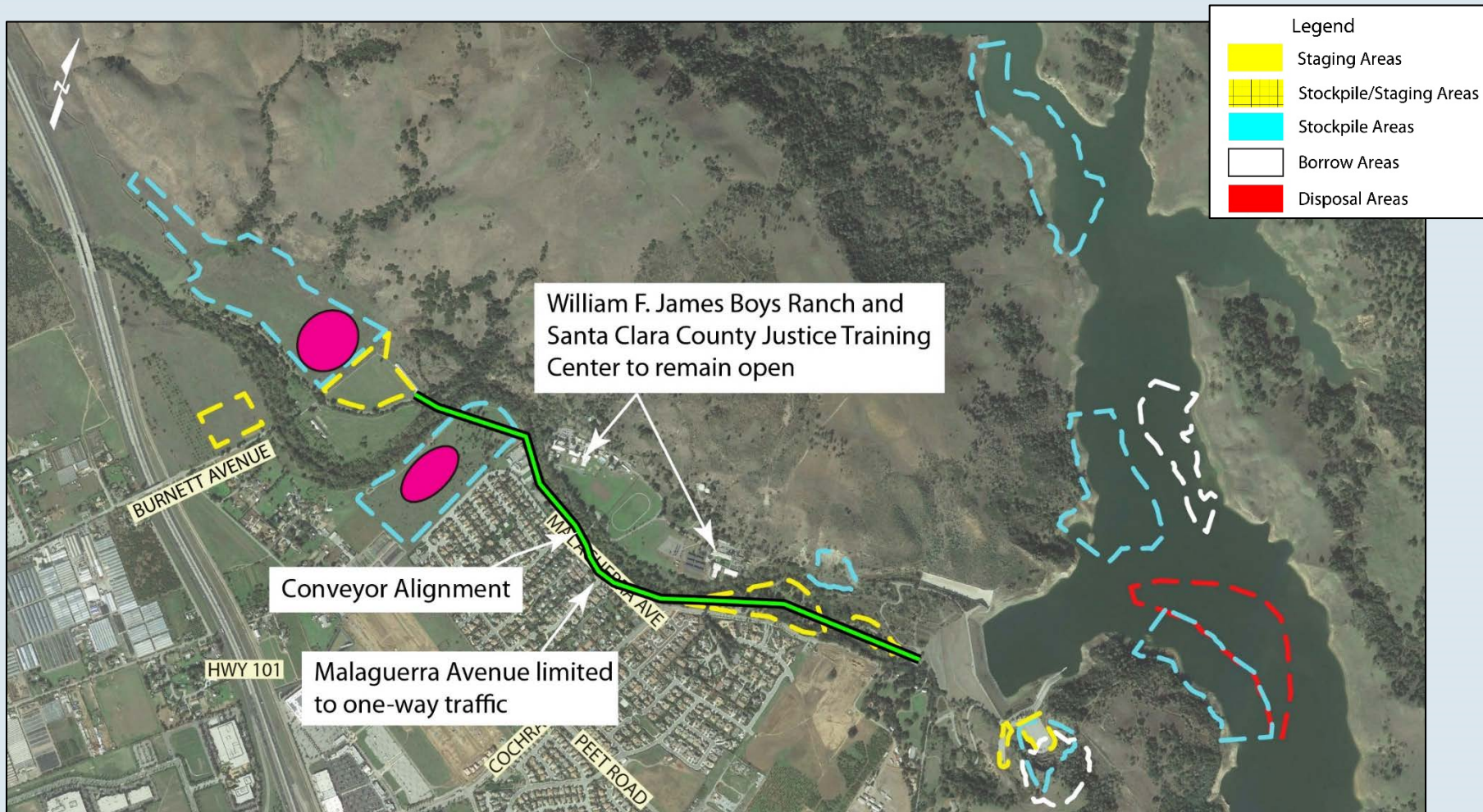
# Alternative 1 – Conveyor on County Property



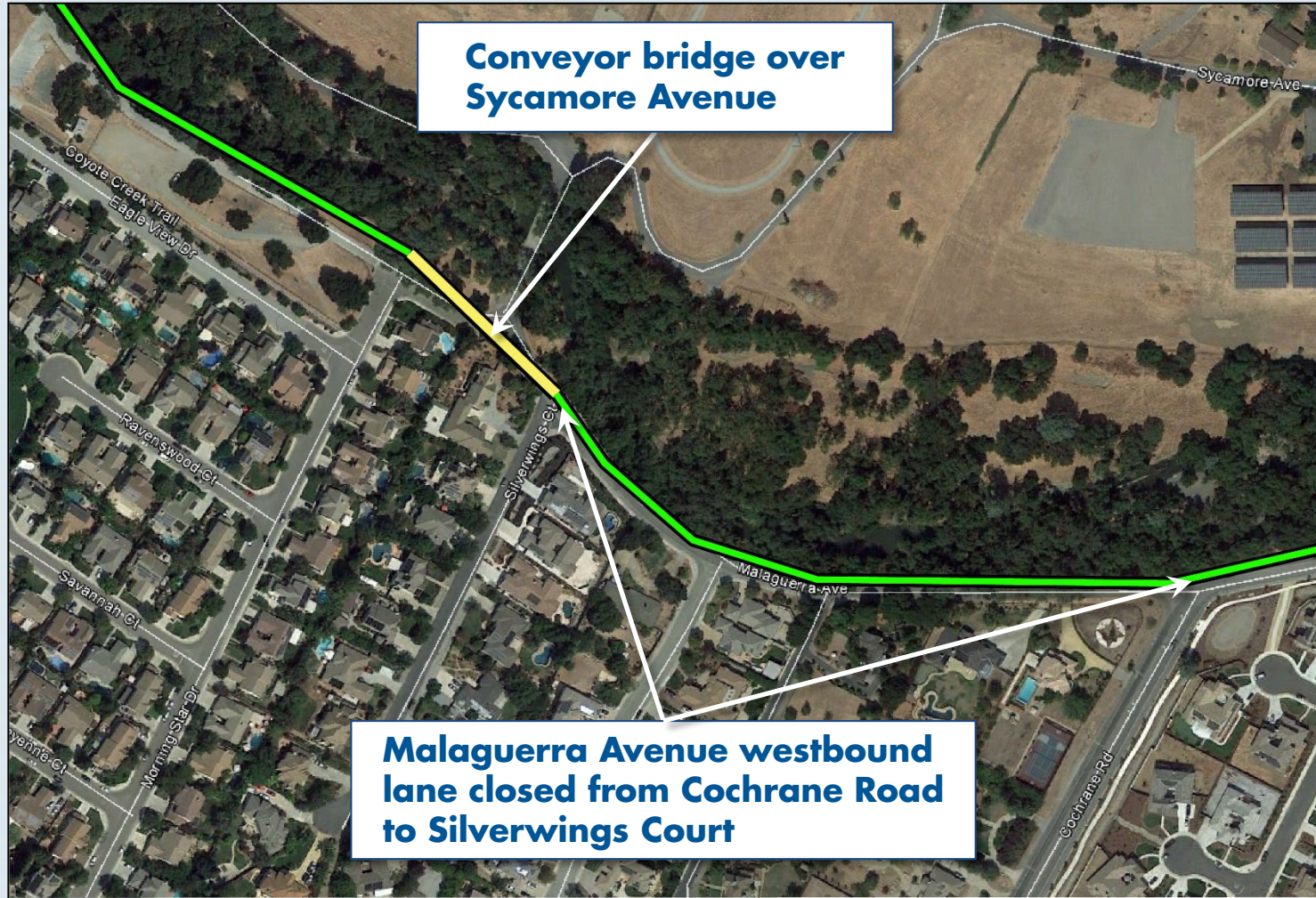
# Alternative 1 - Impacts to County Property



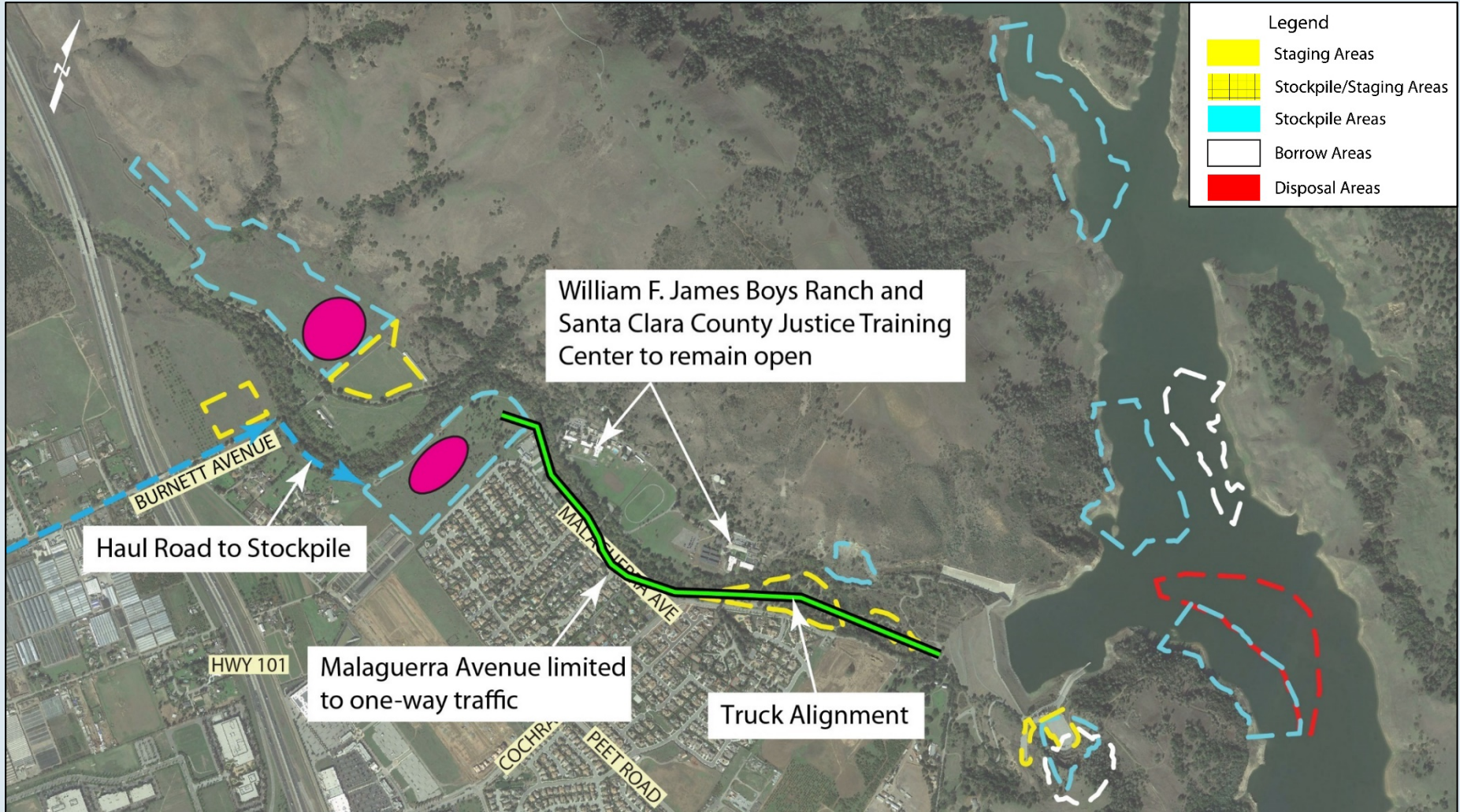
# Alternative 2 – Conveyor along Malaguerra



# Alternative 2 - Impacts to Malaguerra Avenue

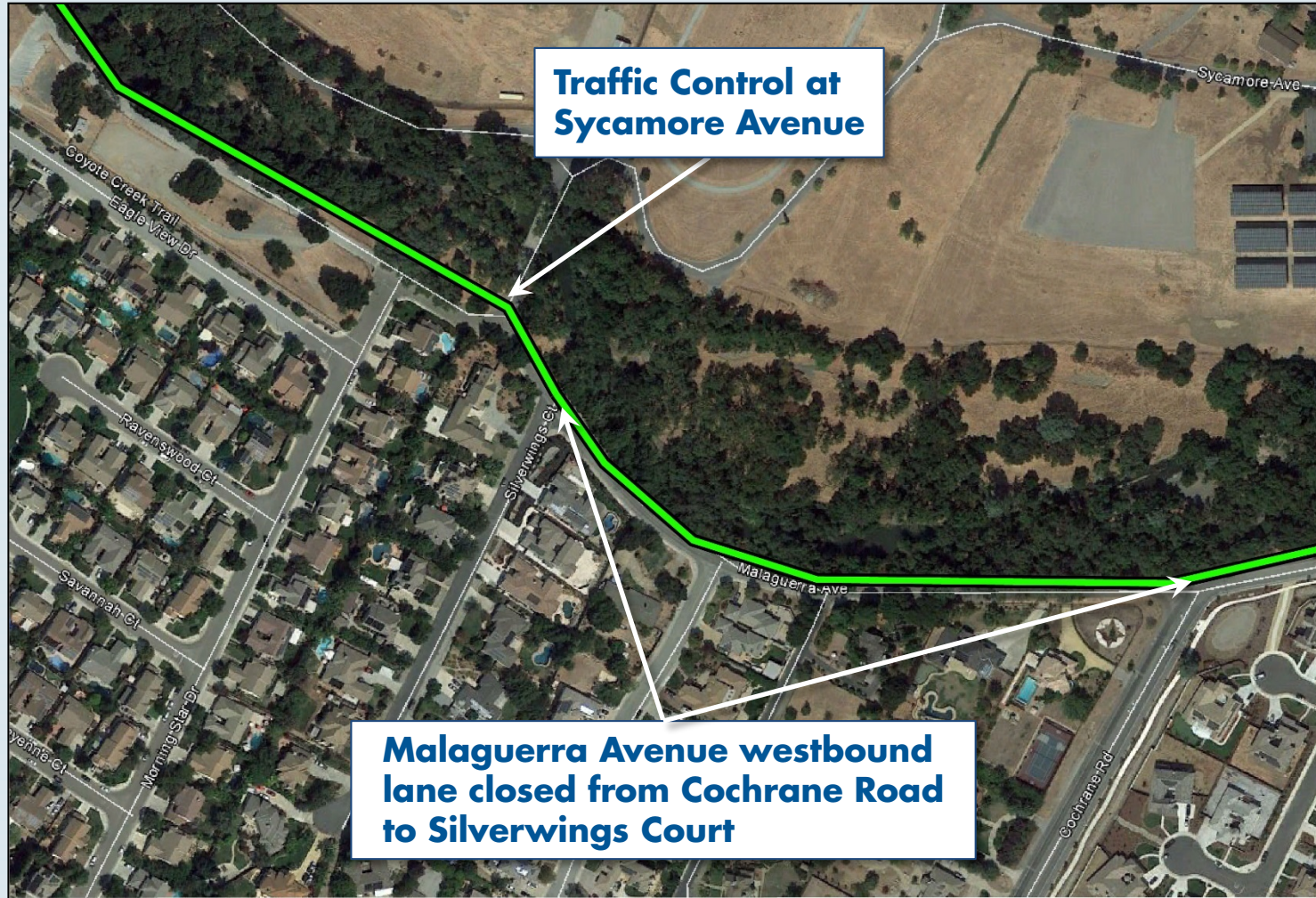


# Alternative 3 – Trucks along Malaguerra





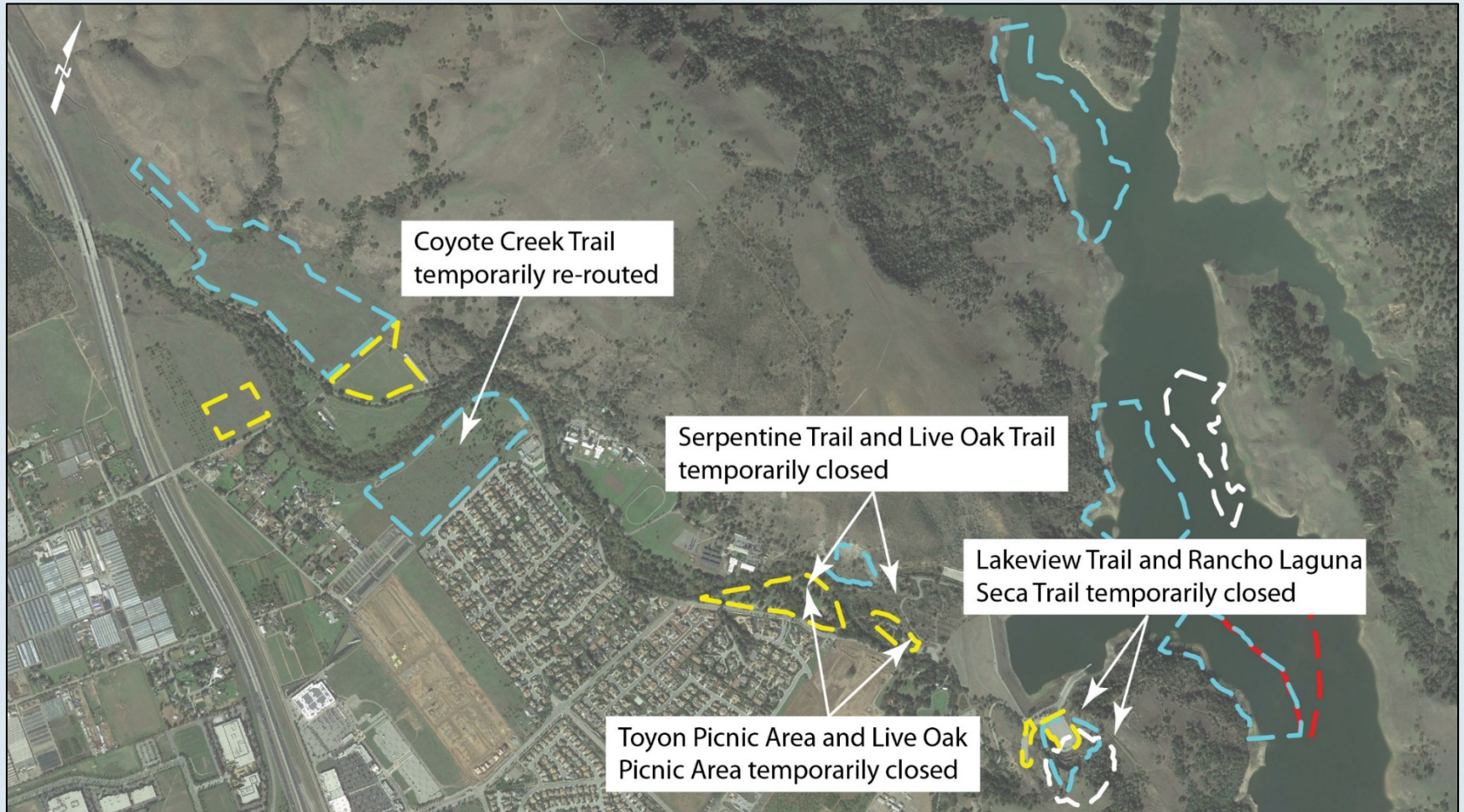
# Alternative 3 - Impacts to Malaguerra Avenue



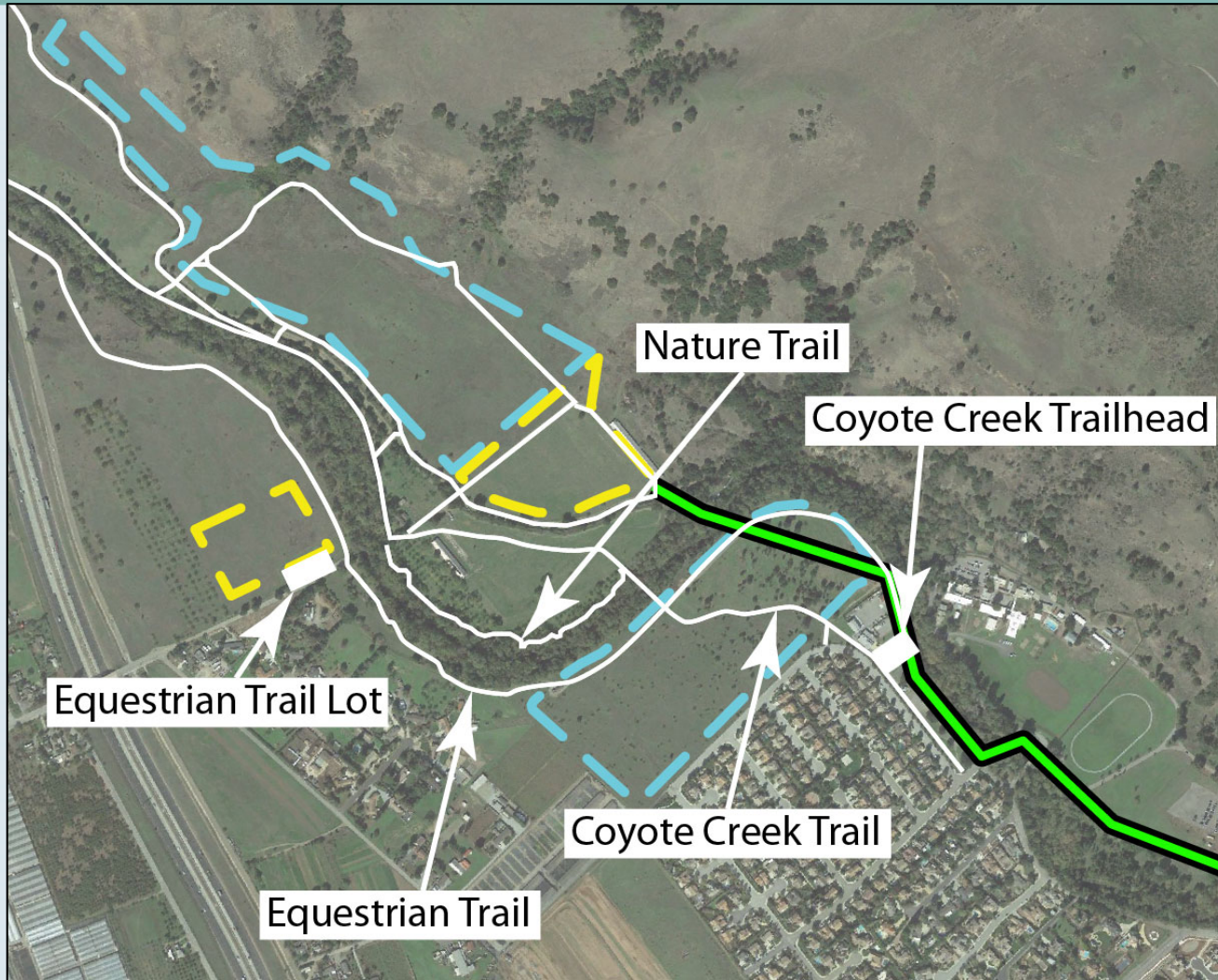
# Typical Covered Conveyor



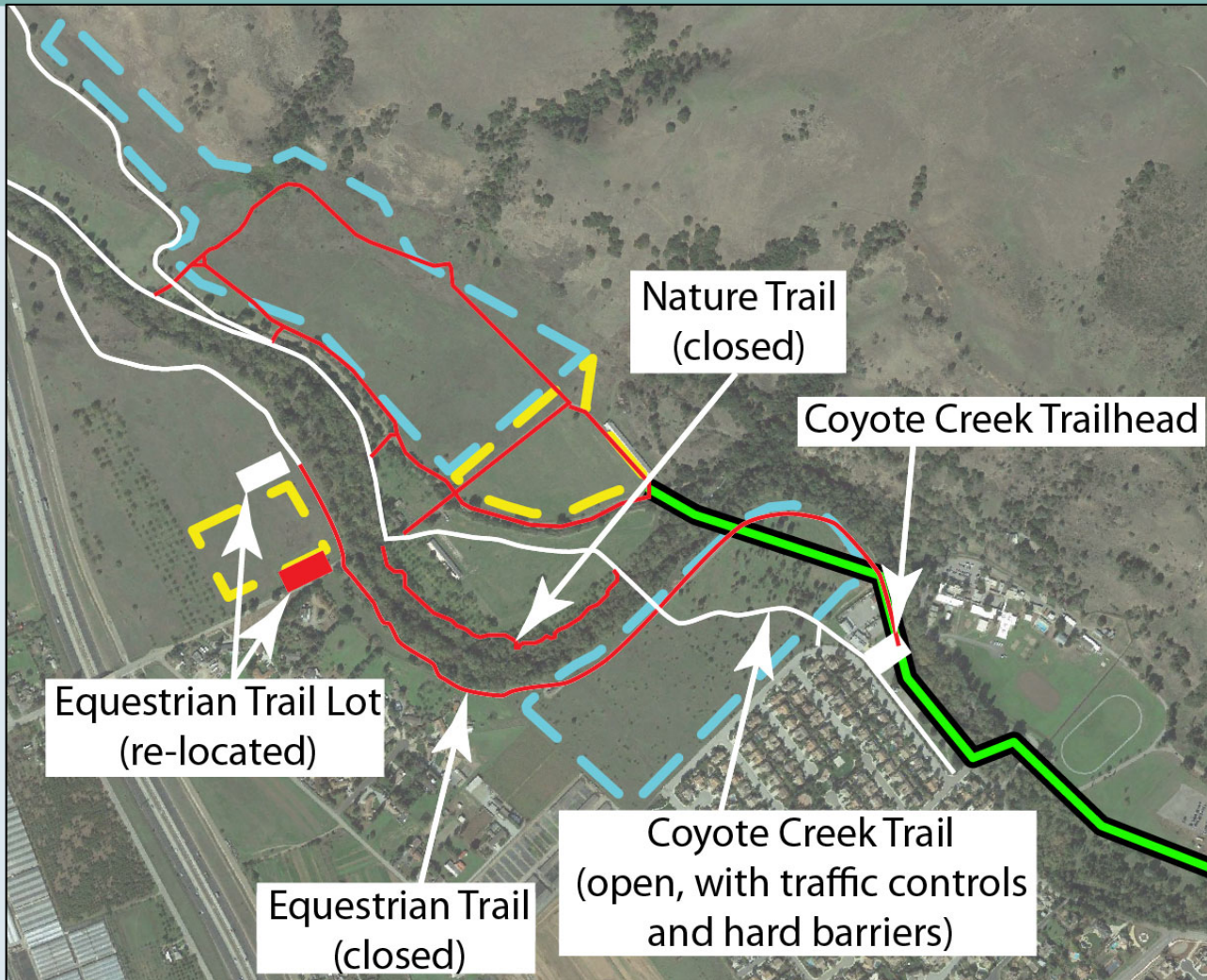
# Project Impacts – Trails



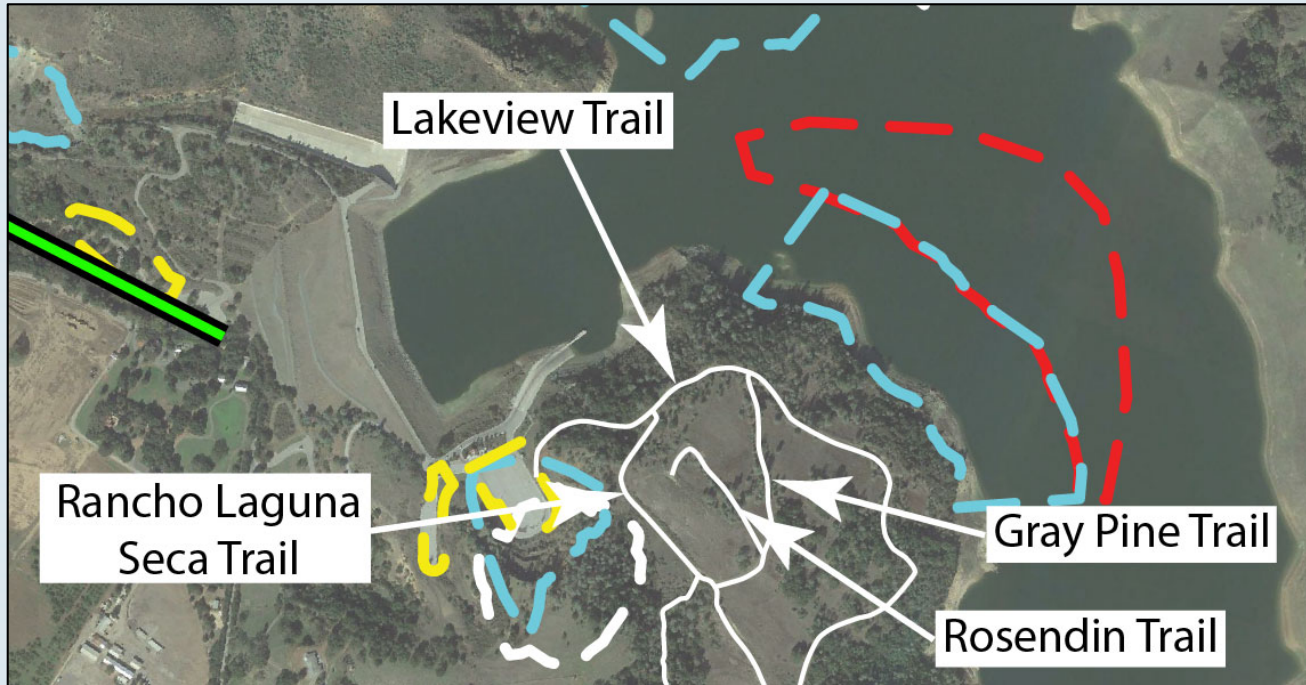
# Project Impacts – Existing Downstream Trails



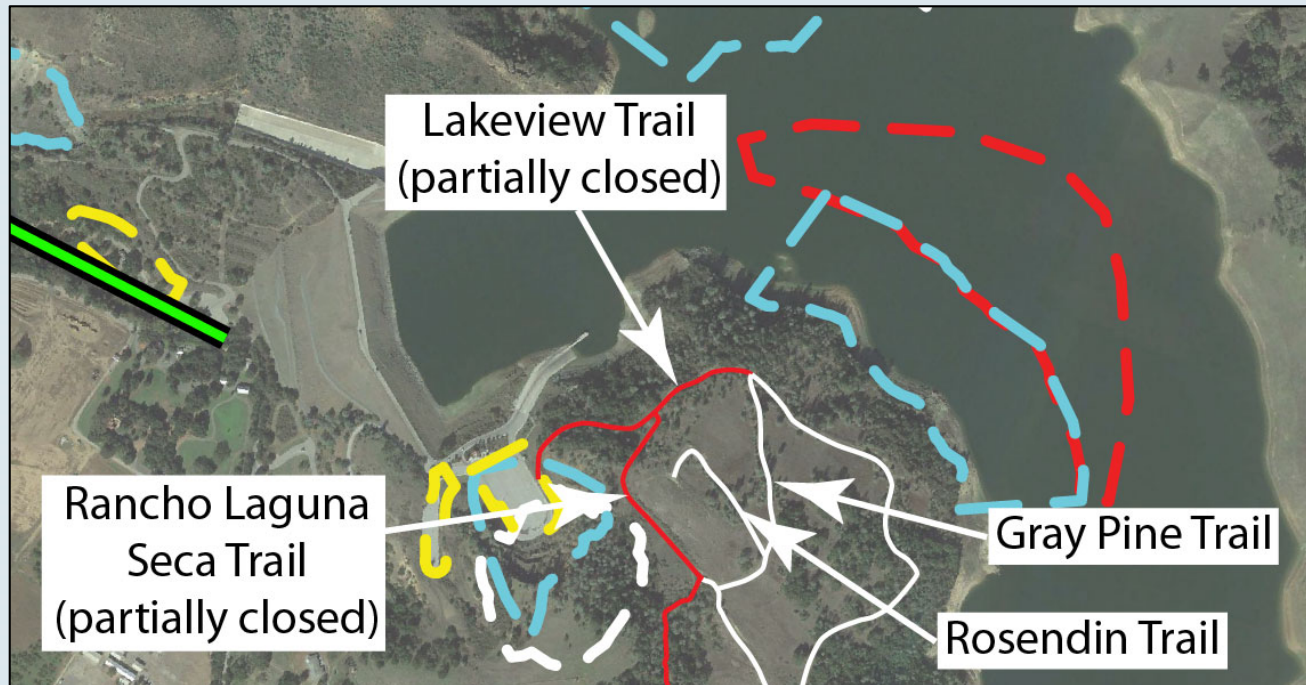
# Project Impacts – Proposed Downstream Trail Closures



# Project Impacts – Existing Upstream Trails



# Project Impacts – Proposed Upstream Trail Closures



Public access to Gray Pine Trail and Rosendin Trail will be temporarily closed during blasting operations at Basalt Hill.

# Project Impacts - Boating

- ▶ **Potential for some boating at Anderson until construction starts, depending on the rainfall received each year.**
- ▶ **Once construction starts, the reservoir will be closed to recreational use as the water level will be lowered in preparation for embankment construction.**
- ▶ **After construction, the reservoir can be refilled to its full capacity for recreational use.**



# Cochrane Road Closure During Construction



# Post-Construction Roads and Parking





# Ongoing Investigations and CEQA Studies

# Topics to be Fully Evaluated by EIR

- ▶ **Aesthetics**
- ▶ **Air Quality**
- ▶ **Biological Resources**
- ▶ **Cultural**
- ▶ **Geology and Soils**
- ▶ **Greenhouse Gas Emissions**
- ▶ **Hazards and Hazardous Materials**
- ▶ **Hydrology, Geomorphology, and Water Quality**
- ▶ **Land Use Planning**
- ▶ **Noise and Vibration**
- ▶ **Recreation**
- ▶ **Transportation and Traffic**
- ▶ **Utility and Service Systems**
- ▶ **Cumulative Impacts**

# Summary of Studies Being Completed for EIR

(1 of 2)

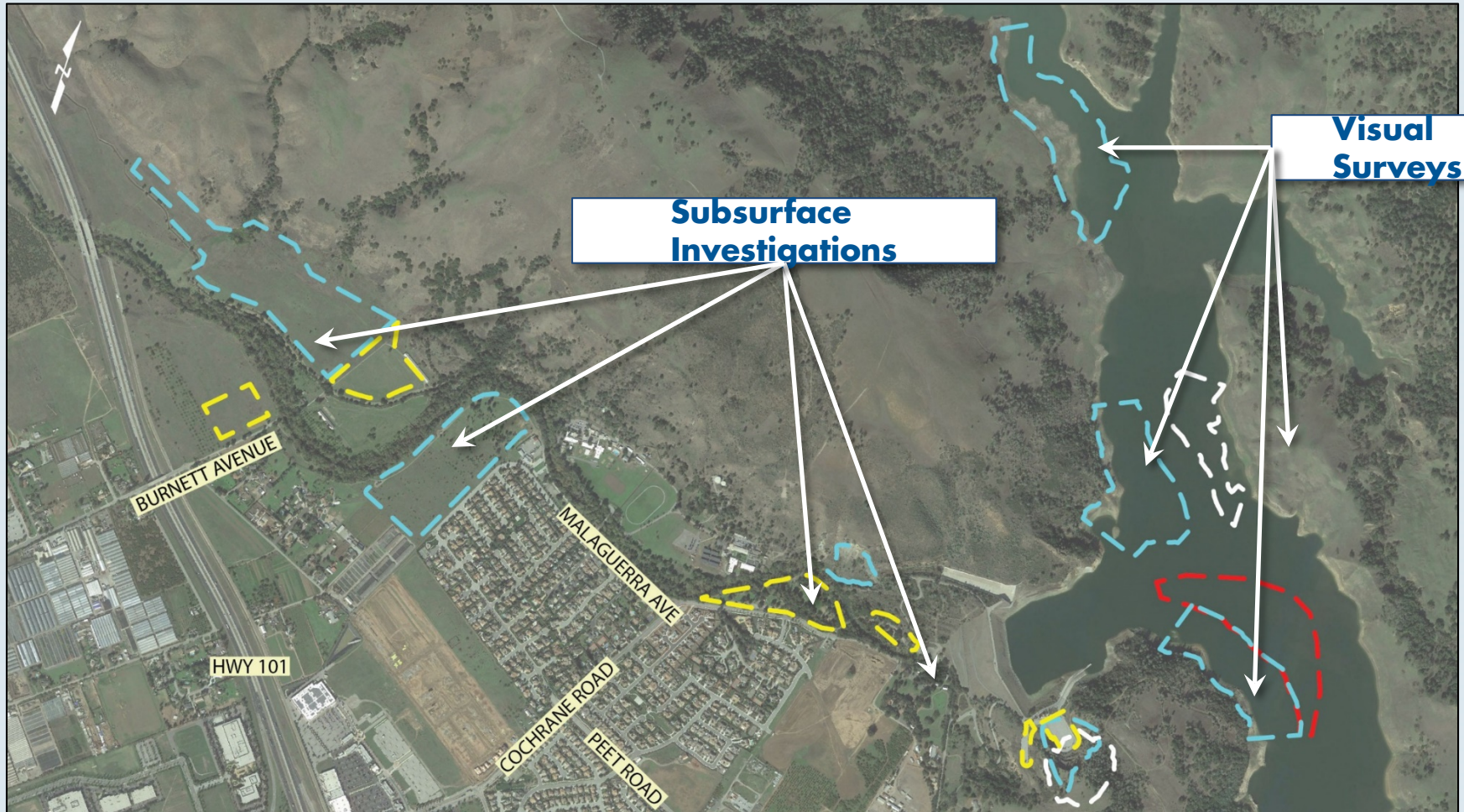
- ▶ **Visual studies – regional and local character**
- ▶ **Air quality – pollutants, dust, and emissions**
- ▶ **Biological resources – wetland delineation; plant, terrestrial, and fish species distribution, abundance, and habitat assessments; evaluating wildlife movements**
- ▶ **Cultural resources – surveys for historical and archeological resources throughout the proposed Area of Potential Effect (APE)**
- ▶ **Studies for seismic hazards and landslides**
- ▶ **Greenhouse gas emissions and energy use**
- ▶ **Studies to ascertain the occurrence of hazardous materials, naturally occurring asbestos, and wildland fire hazards**

# Summary of Studies Being Completed for EIR

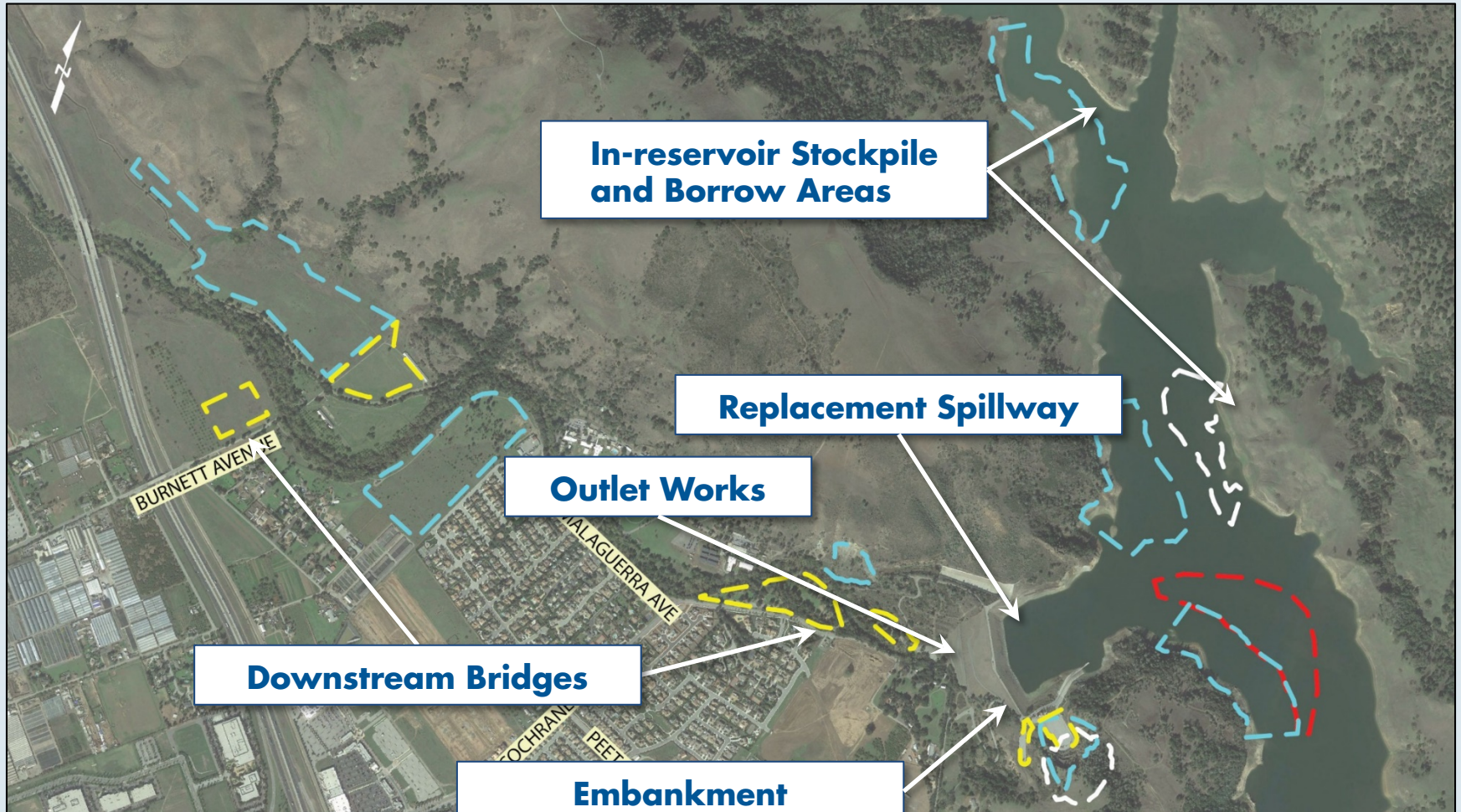
(2 of 2)

- ▶ **Hydrology studies – estimate flow rates from storms; establish baseline conditions of water quality metrics (e.g., dissolved oxygen, temperature, turbidity, etc.); effects on groundwater, etc.**
- ▶ **Studies of noise and vibrations from various project components**
- ▶ **Evaluate long-term and short-term impacts to local and regional recreation**
- ▶ **Traffic studies to evaluate access points; evaluate changes in level of service to transit systems and/or pedestrian and bicycle use**
- ▶ **Studies to evaluate effects on wastewater treatment facilities, water treatment facilities, and water supply**

# Upcoming Archeological Investigations

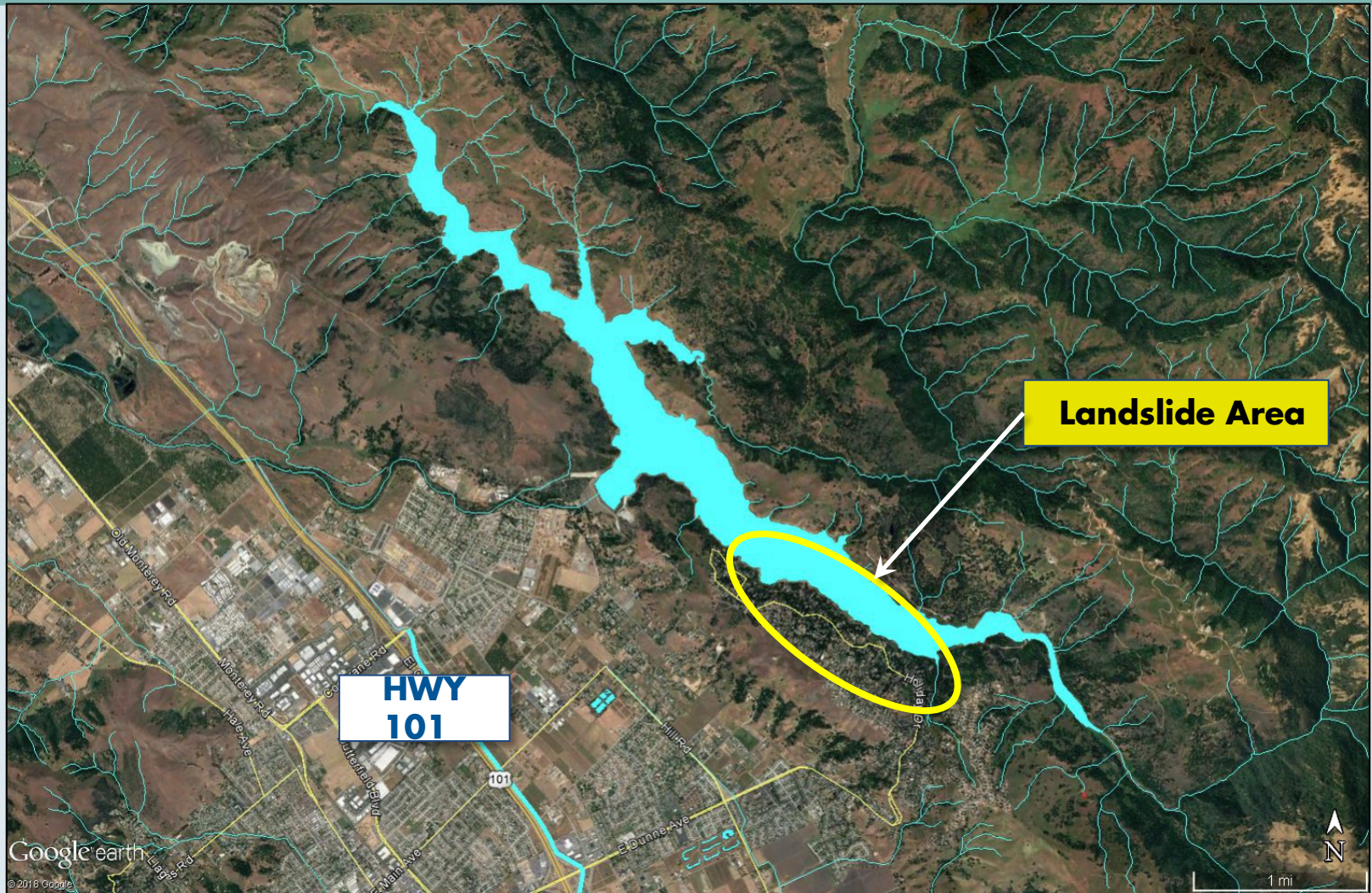


# Upcoming Geotechnical Investigations





# Reservoir Landslide Risks



# Stay Informed

[www.valleywater.org/anderson-dam-project](http://www.valleywater.org/anderson-dam-project)

- ▶ **Sign up to receive project updates via email.**
- ▶ **View project reports, maps, history and other information.**

Tony Mercado  
[tmercado@valleywater.org](mailto:tmercado@valleywater.org)  
(408) 630-2342

