



San Francisquito Creek

Flood Protection • Ecosystem Restoration • Recreation

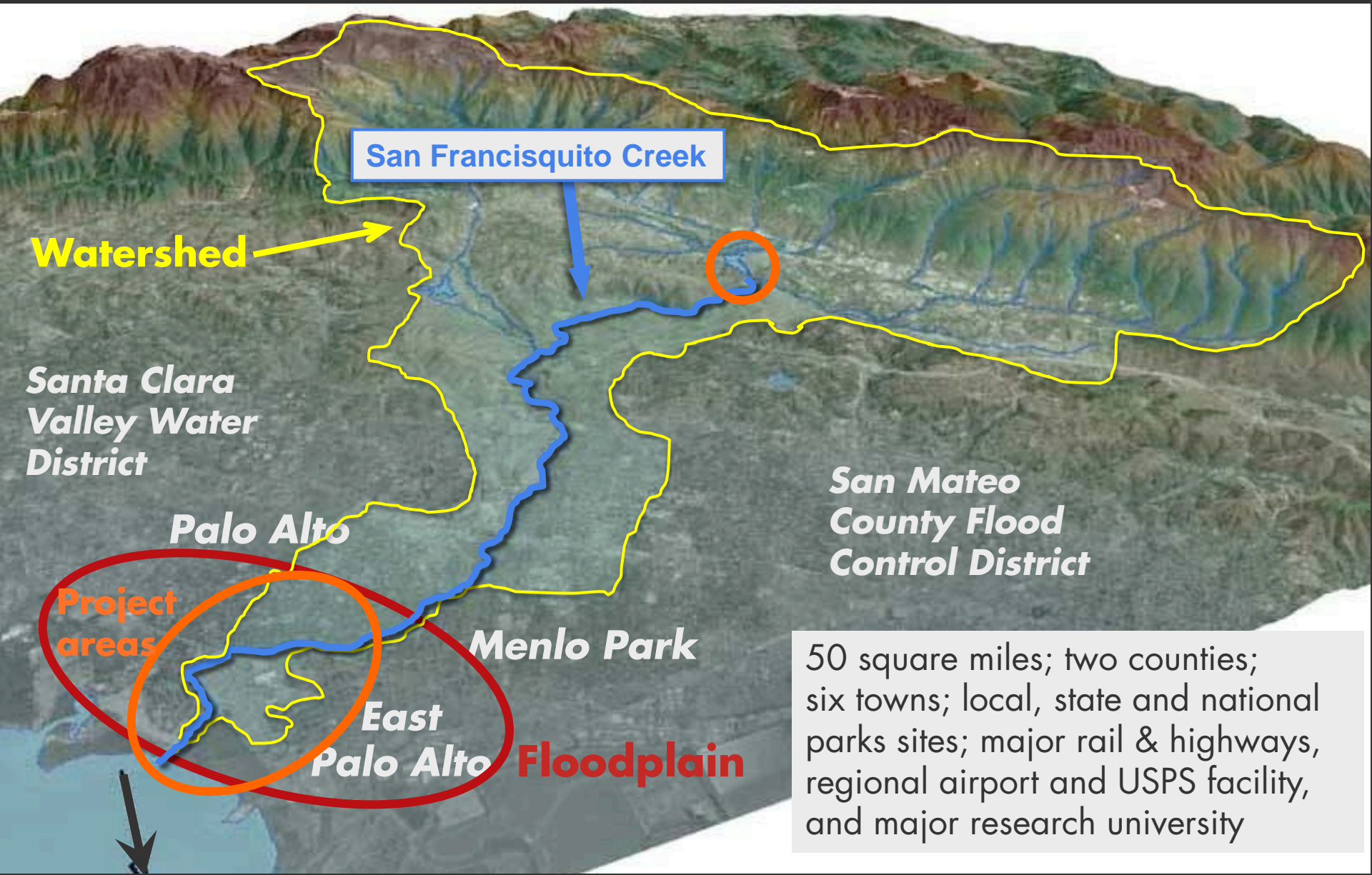
San Francisco Bay to Highway 101



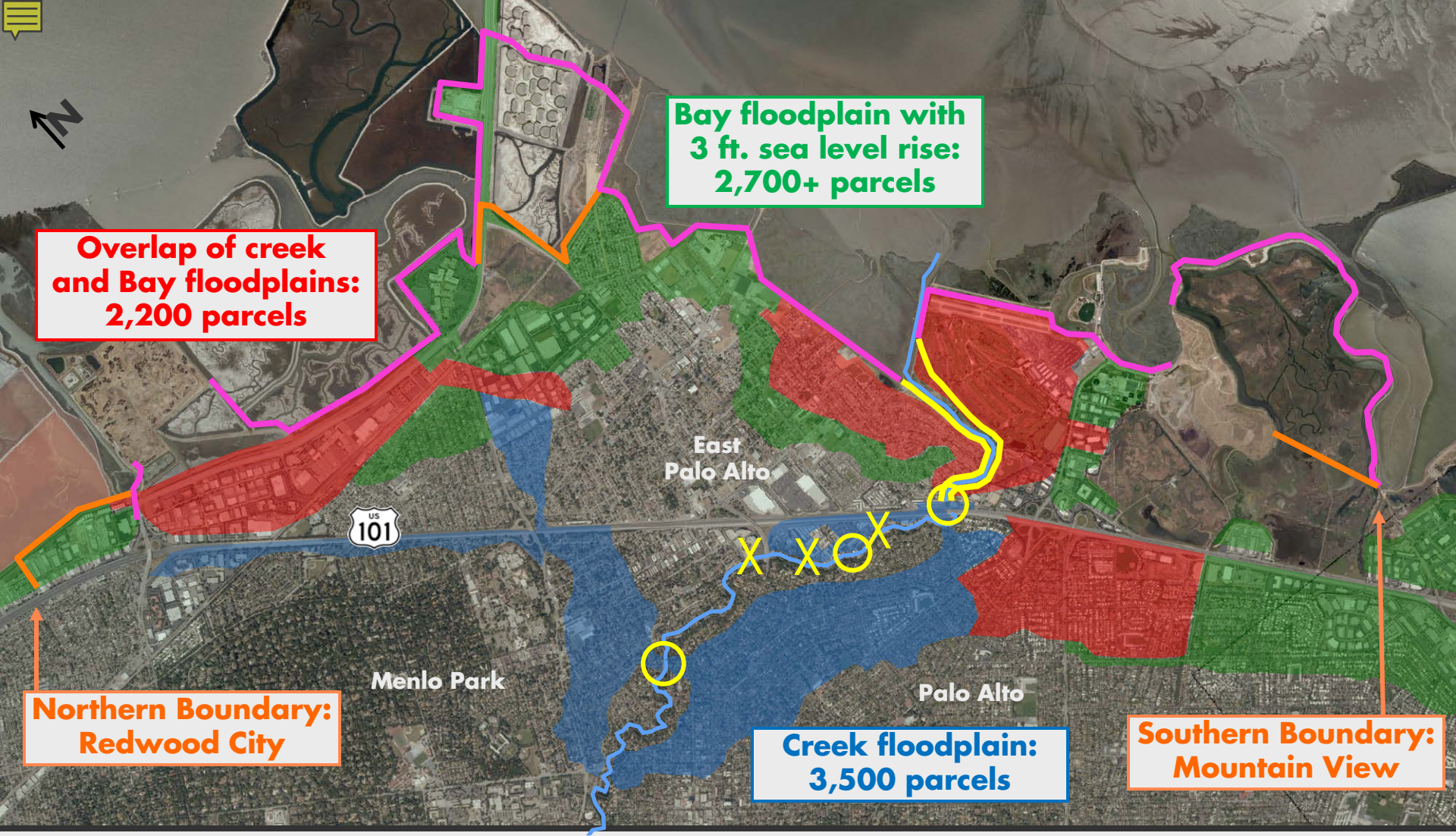


SFCJPA.ORG

San Francisquito Creek Joint Powers Authority



50 square miles; two counties; six towns; local, state and national parks sites; major rail & highways, regional airport and USPS facility, and major research university



San Francisquito Creek area floodplains and projects

S.F. Bay to Highway 101 Project



Enhance marsh levee

Enhance public experience

Degrade Bay level

Protect previously flooded people and property from SF Bay to Hwy. 101 against the maximum possible creek flow during a high tide with over 3 feet of Sea Level Rise

New levee set back into golf course

Excavate sediment and create marsh transition zones

Floodwalls

East Palo Alto

Palo Alto





Until August 31, 2016

Oct. 15 – Jan. 31
No work in creek

Feb. 1 – June 15, 2017

June 15 – Aug. 31, 2017

Sept. 1 – Oct. 15
No restrictions!

**June and July: PG&E tower
construction 50 foot exception
at edge of zone**

No construction zone



Sharing the cost and the benefits

S.F. Bay to Highway 101 Project

Total estimated cost: \$41.35 million

Santa Clara Valley Water District	\$28 million
SFCJPA	\$8.83 million
East Palo Alto	\$1.26 million
San Mateo County	\$2.06 million
Menlo Park	\$0.8 million
Palo Alto	\$0.4 million
<hr/>	
Caltrans (Hwy 101 bridge replacement)	\$18 million



Design and **construction**

Calendar years



Design

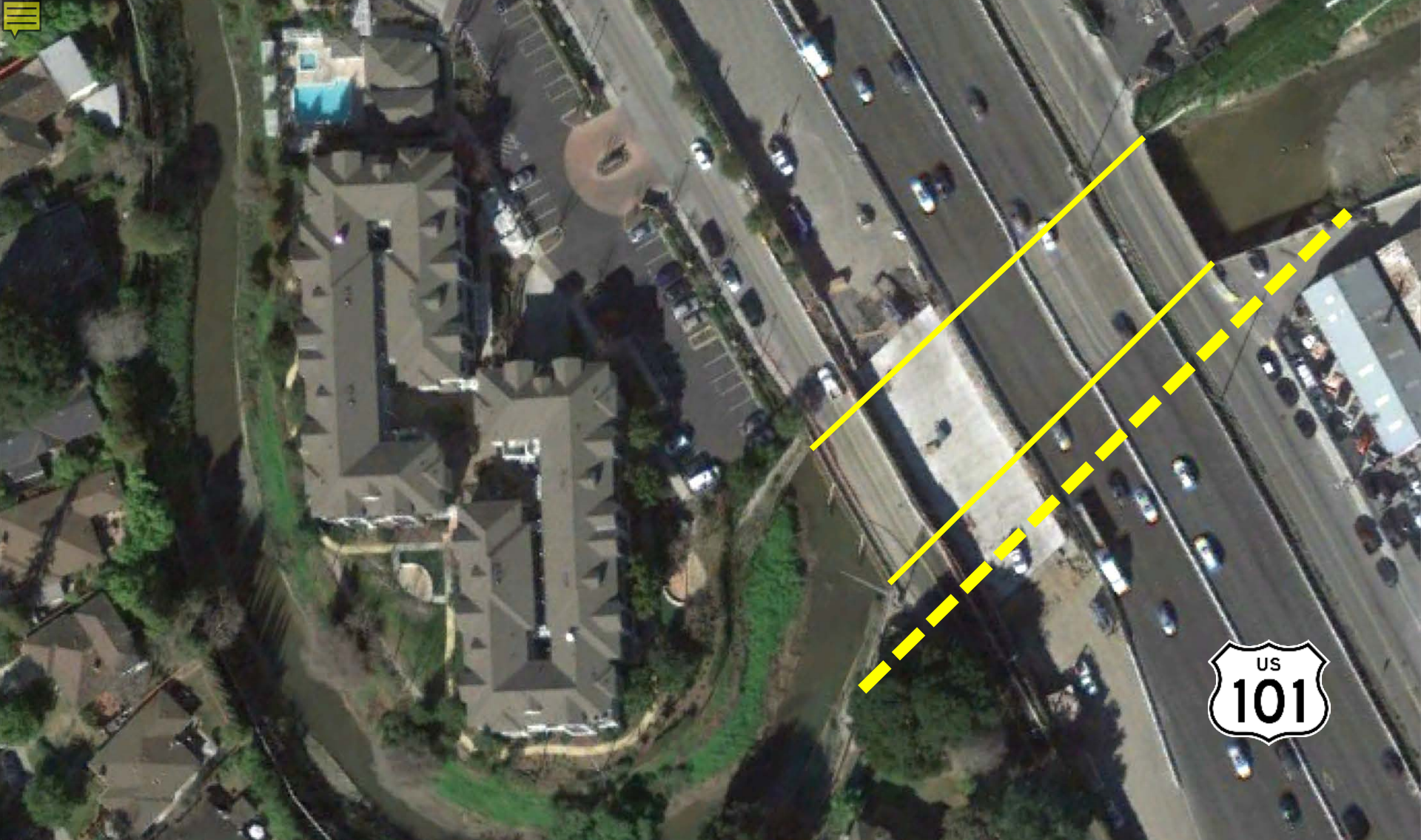
Permits

Construction



Project updates to the community





Caltrans Highway 101 Bridge Project
2015-2017



CARTS/DOOR	
18 HOLES	9 HOLES
1	1
2	2
3	3
4	4
5	5
6	6
7	7
8	8
9	9
10	10
11	11
12	12
13	13
14	14
15	15
16	16
17	17
18	18
19	19
20	20
21	21
22	22
23	23
24	24
25	25
26	26
27	27
28	28
29	29
30	30
31	31
32	32
33	33
34	34
35	35
36	36
37	37
38	38
39	39
40	40
41	41
42	42
43	43
44	44
45	45
46	46
47	47
48	48
49	49
50	50
51	51
52	52
53	53
54	54
55	55
56	56
57	57
58	58
59	59
60	60
61	61
62	62
63	63
64	64
65	65
66	66
67	67
68	68
69	69
70	70
71	71
72	72
73	73
74	74
75	75
76	76
77	77
78	78
79	79
80	80
81	81
82	82
83	83
84	84
85	85
86	86
87	87
88	88
89	89
90	90
91	91
92	92
93	93
94	94
95	95
96	96
97	97
98	98
99	99
100	100



During
construction



Reduce equipment impacts




- Maintain and tune equipment to mfg's specs
- Minimize noise impacts from equipment
- Reduce idling time of diesel equipment
- Internal combustion engines will have adequate mufflers and best emission reduction technology



Protect the creek from spills

Protect and **enhance** our resources





3 ways to get project updates

Project website:
sfcjpa.org

Attend a monthly
SFCJPA board meeting

Sign up to receive
project **updates via
email** using the link on
the project website or
the QR code.



Join our mailing list





Thank you

For more information:
Kristen Yasukawa
(650) 382-3331
kyasukawa@valleywater.org

