



Valley Water

Clean Water • Healthy Environment • Flood Protection



Coyote Creek Flood Protection Project

Conceptual/Feasible Project Alternatives

*November 7th, 2019 Public Meeting
Franklin McKinley School District (Board Room)
645 Wool Creek Drive, San José*

May 2019 Meeting Review

1. Defined project limits & setting

2. Flooding history & project timeline

3. Early conceptual alternatives

4. Obtained input from public

Agenda Today

1. Public input from past meeting

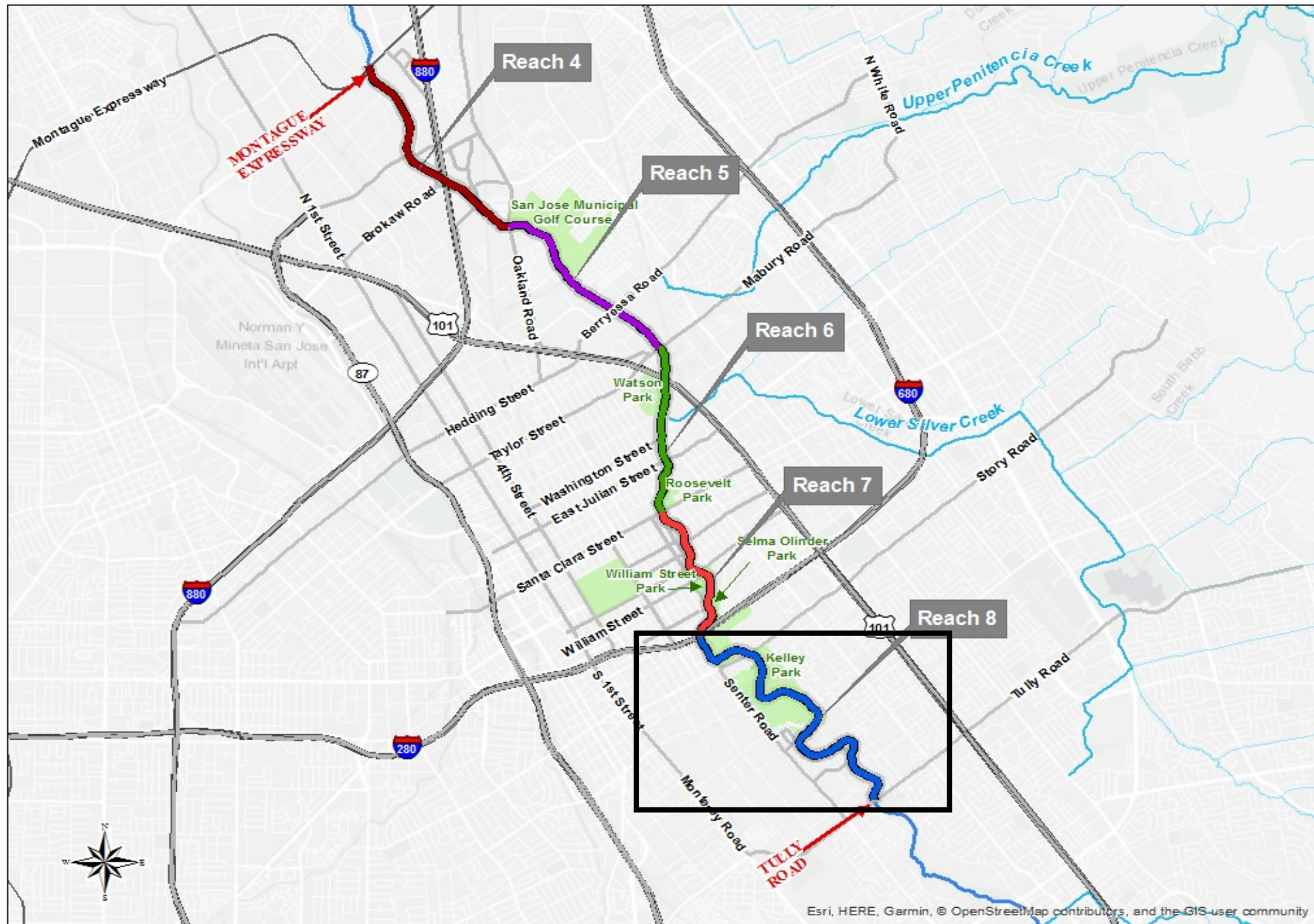
2. Define criteria for feasible alternatives

3. Feasible Alternatives

4. Emergency Preparedness

5. Anderson Dam Project Update

6. Table discussions



May 21st, 2019 Public Input

59 comments

Subject	Quantity
Anderson Dam	19
Flooding dynamics/Problem Definition	13
Interagency coordination & collaboration	14
Project Goals	5
Conceptual Alternatives	8
Total	59



Coyote Creek I-280 to Tully Road Reach 8 February 2017 Breakout Locations

San Jose Water Company,
12th St. Station:
Observed 2017 Flow: 7,300 cfs
2017 if flows contained: 7,300 cfs

Story Road Landfill Site:
Observed 2017 Flow: 7,300 cfs
2017 if flows contained: 7,300 cfs

Creekside Garden Apartments:
Flow at which flooding begins: 7,000 cfs
Observed 2017 Flow: 7,300 cfs
2017 if flows contained: 7,300 cfs

Japanese Friendship Garden:
Flow at which flooding begins: 4,000 cfs
Observed 2017 Flow: 7,300 cfs
2017 if flows contained: 7,300 cfs

Rocksprings Neighborhood:
Flow at which flooding begins: 5,000 cfs
Observed 2017 Flow: 7,300 cfs
2017 if flows contained: 7,300 cfs

Happy Hollow Park & Zoo:
Flow at which flooding begins: 3,500 cfs
Observed 2017 Flow: 7,300 cfs
2017 if flows contained: 7,300 cfs

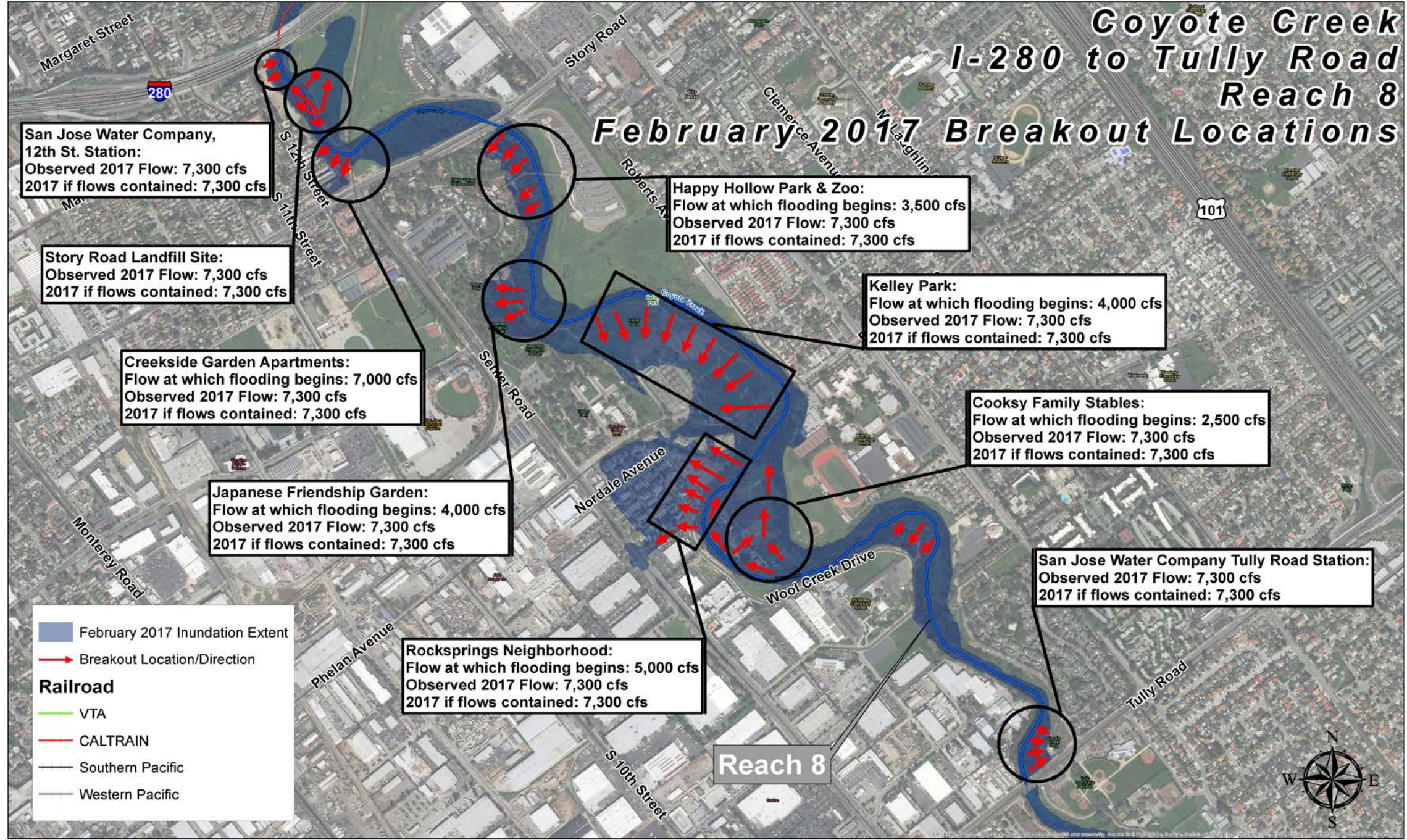
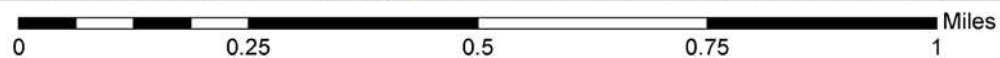
Kelley Park:
Flow at which flooding begins: 4,000 cfs
Observed 2017 Flow: 7,300 cfs
2017 if flows contained: 7,300 cfs

Cooksy Family Stables:
Flow at which flooding begins: 2,500 cfs
Observed 2017 Flow: 7,300 cfs
2017 if flows contained: 7,300 cfs

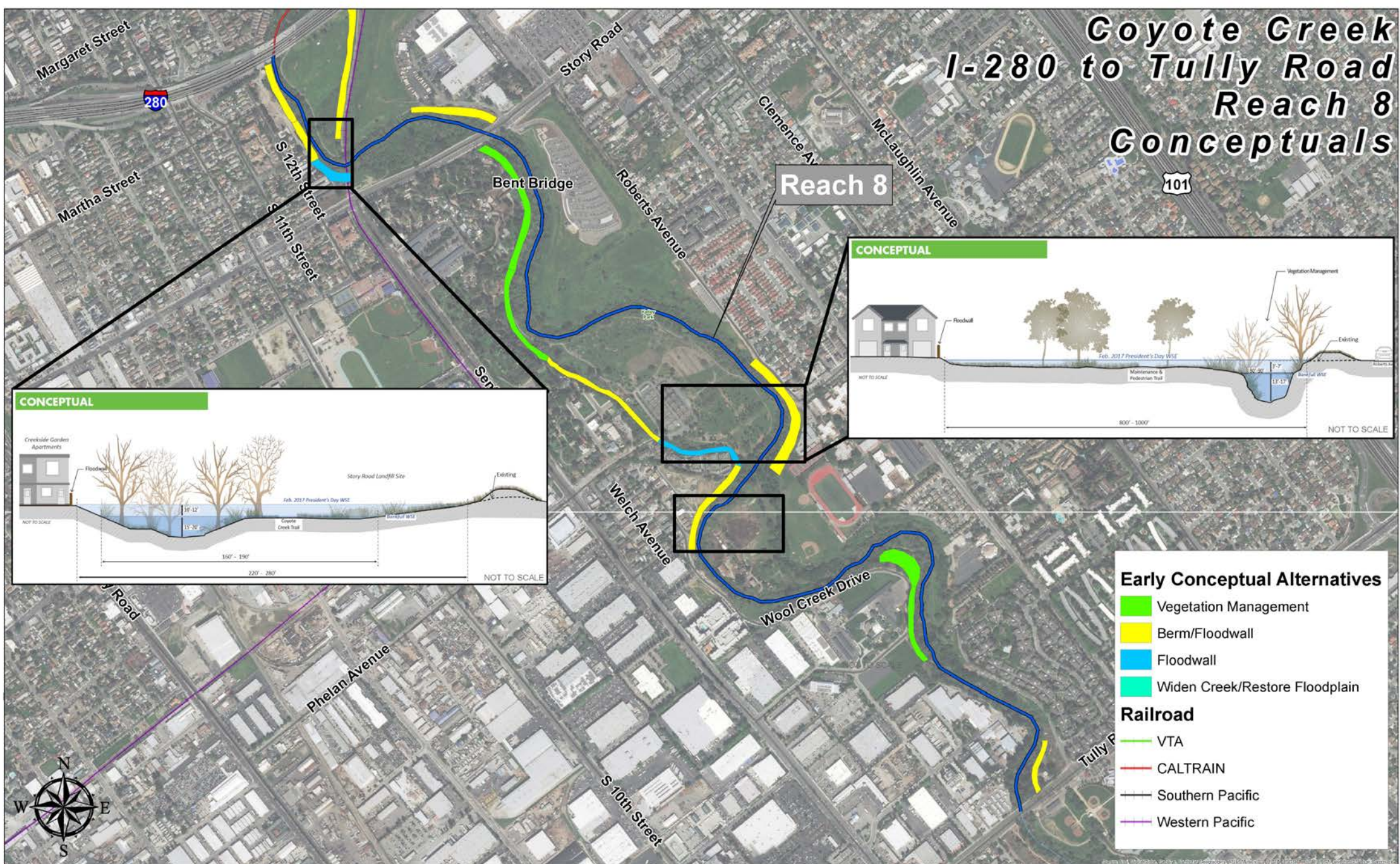
San Jose Water Company Tully Road Station:
Observed 2017 Flow: 7,300 cfs
2017 if flows contained: 7,300 cfs

February 2017 Inundation Extent
 Breakout Location/Direction
Railroad
 VTA
 CALTRAIN
 Southern Pacific
 Western Pacific

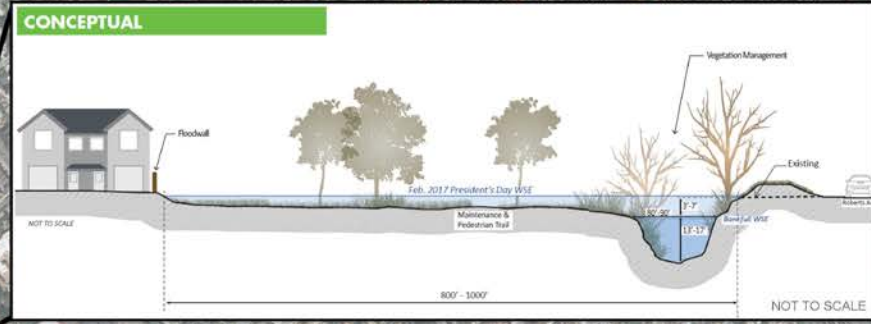
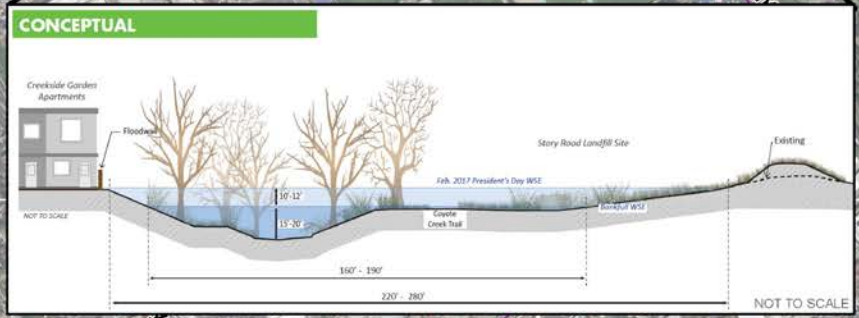
Reach 8



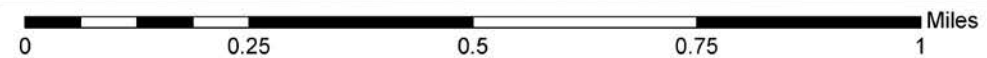
Coyote Creek I-280 to Tully Road Reach 8 Conceptuals



Reach 8



- Early Conceptual Alternatives**
- Vegetation Management
 - Berm/Floodwall
 - Floodwall
 - Widen Creek/Restore Floodplain
- Railroad**
- VTA
 - CALTRAIN
 - Southern Pacific
 - Western Pacific





Flood protection should be the number one goal. Aesthetics is important but less than safety. As renters, we care about safety only. Other benefits do not concern us much.



What is Valley Water doing to ensure the joint collaboration with the City of San José and let residents know government is working together for you?



Why did the Rock Springs community get such a short floodwall? Does it provide protection?



Some of the residents living away from proposed floodwalls are not too concerned with aesthetics, they just want to be protected from flooding.



Support and coordinate with the City Trail Master Plan. Support recreation and trail development.



Limit development in floodplains. Need to do good land use decision making in flood prone areas. Coordinate with the City of San José before allowing development in the flood zone.

External Coordination

- **Berryessa Bart Urban Village Project:**
<http://sanjoseca.gov/berryessabarturbanvillage>
- **Coyote Creek Trail Master Plan:**
<http://www.sanjoseca.gov/?nid=2821>
- **BART Silicon Valley (Valley Transportation Authority):**
<https://www.sanjoseca.gov/index.aspx?NID=6060>





What does feasible mean? What is the criteria? What can the community do to shape the feasibility aspect of alternatives?

Conceptual into Feasible Alternatives, What does it mean?

- **Conceptual Alternatives:** broad, simple and high-level options of flood mitigation strategies proposed in a certain area
- **Feasible Alternatives:** available and reasonable options which are screened during the conceptual alternative stage against a set criteria



CRITERIA TO MOVE TO FEASIBLE ALTERNATIVES



Critical Facilities

A facility for which even a slight chance of flooding poses too great a threat. Ideally, critical facilities should not be located in a floodplain



Image by Jim Gensheimer
Bay Area News Group

Structures that produce, use, or store highly volatile, flammable, explosive, toxic and/or water reactive materials

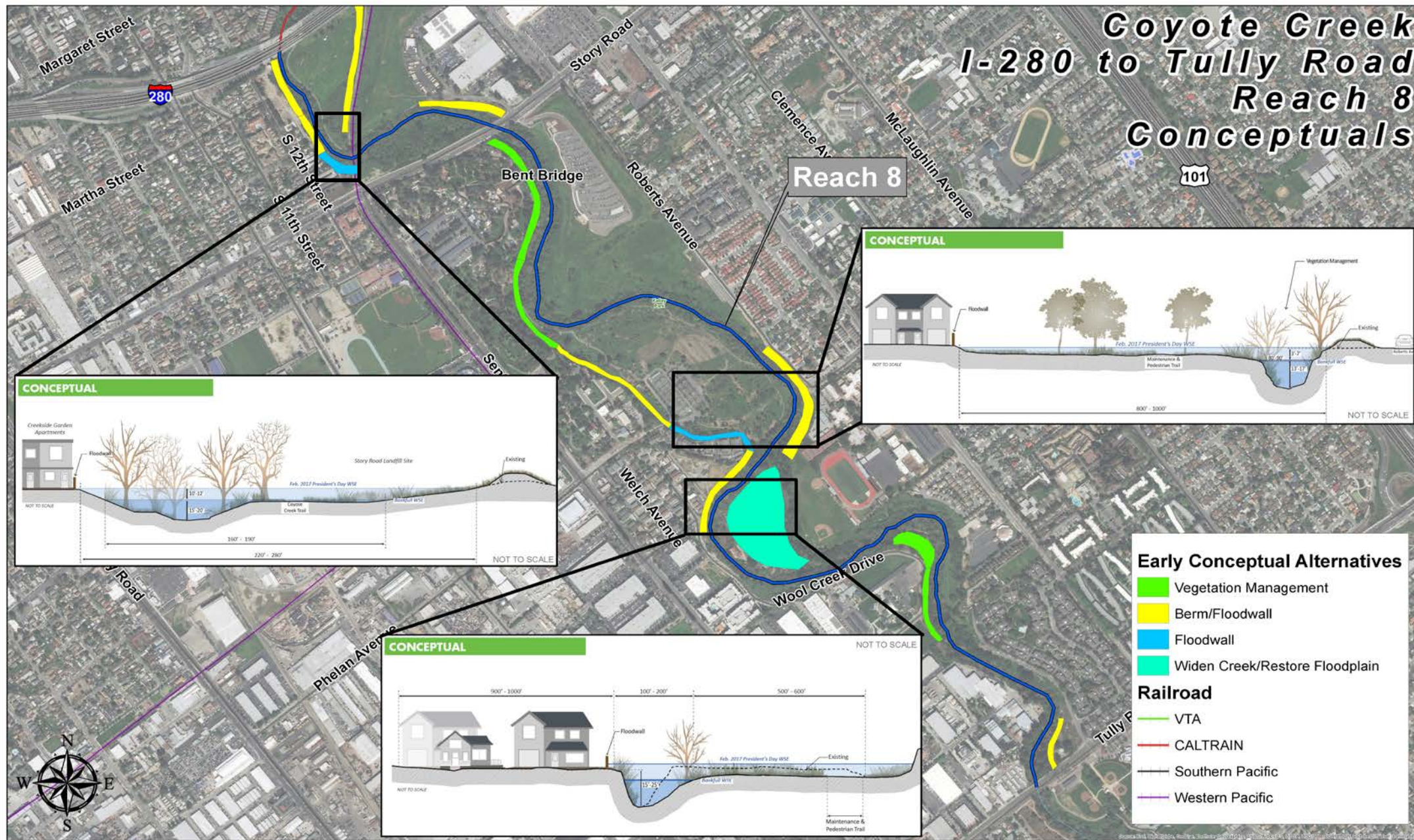
Police stations, fire stations, vehicle and equipment storage facilities and emergency operation centers

Streets and roads considered critical for fire prevention, evacuation and rescue operations

Hospital, nursing homes and housing likely to have occupants who may not be sufficiently mobile

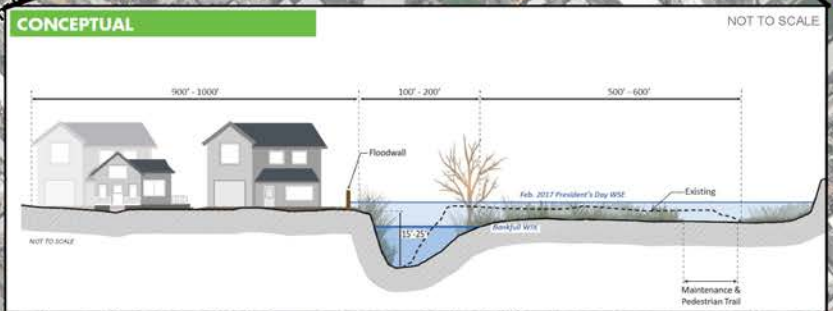
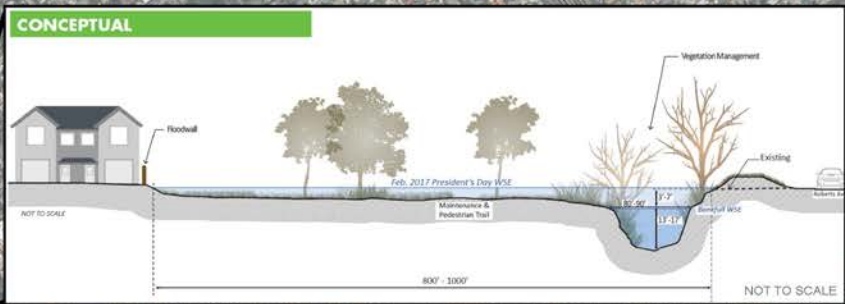
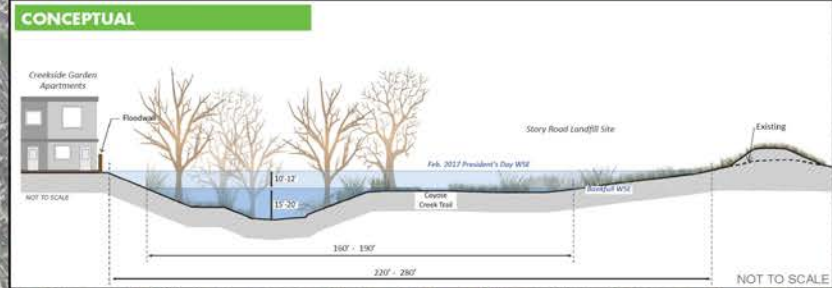
Public and private utility facilities vital to maintaining or restoring normal services to flooded areas

Reach 8 – South 12th Street Apartment Buildings



**Coyote Creek
I-280 to Tully Road
Reach 8
Conceptuals**

Reach 8



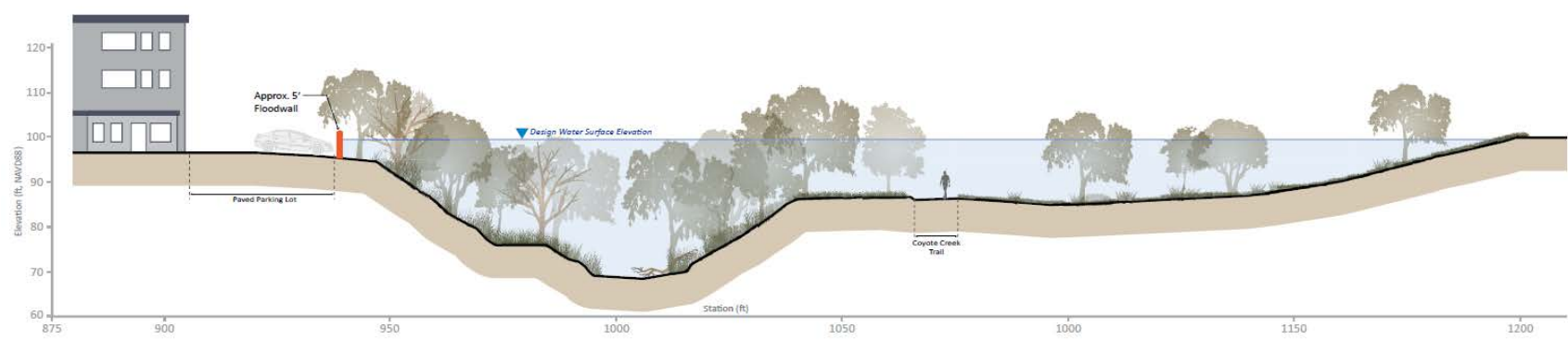
Early Conceptual Alternatives

- Vegetation Management
 - Berm/Floodwall
 - Floodwall
 - Widen Creek/Restore Floodplain
- Railroad**
- VTA
 - CALTRAIN
 - Southern Pacific
 - Western Pacific

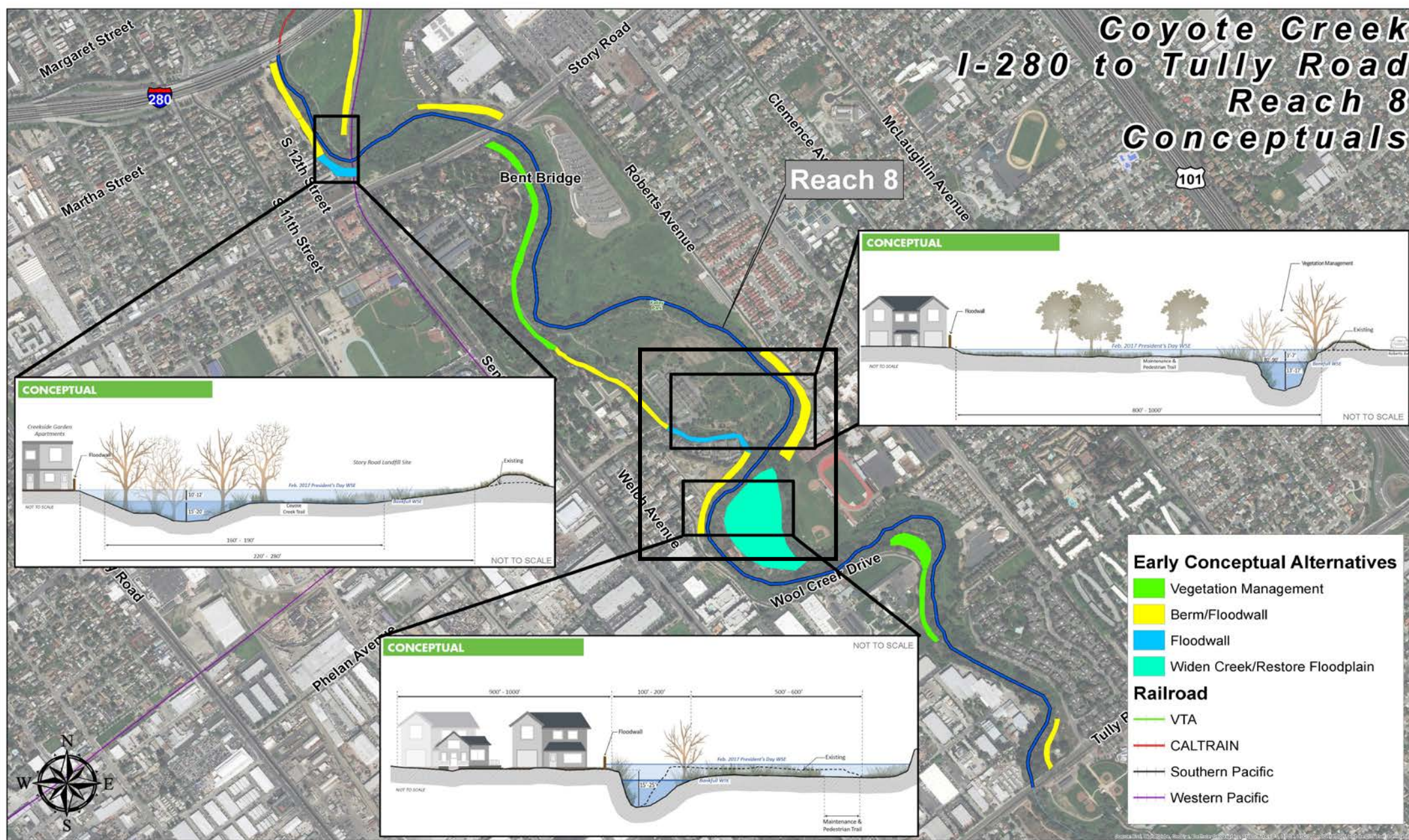




South 12th St. Apartment Buildings

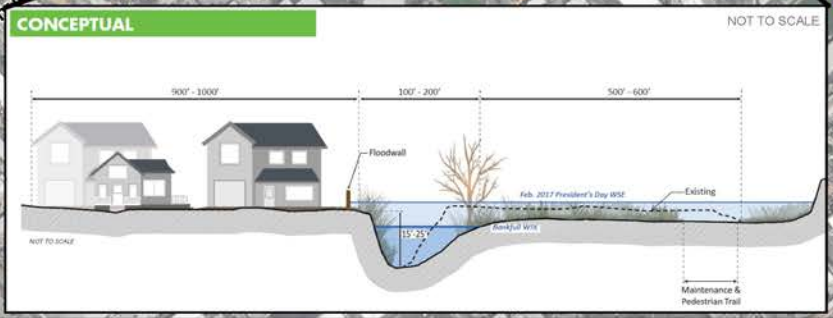
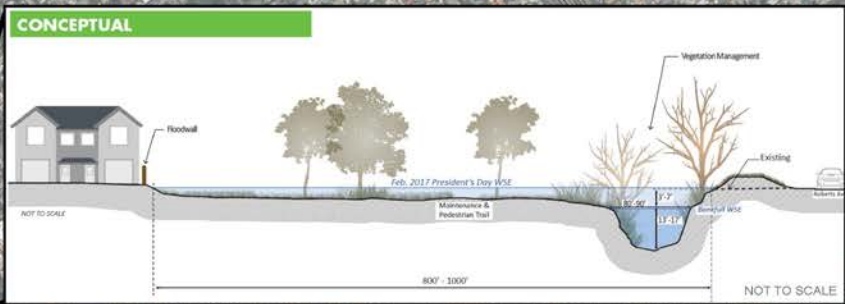
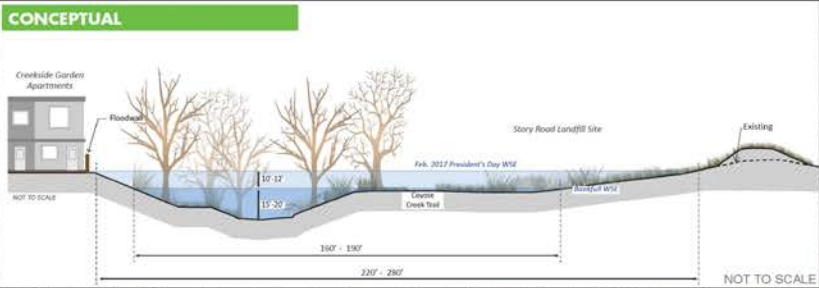


Reach 8 – Rock Springs Community/Bevin Brook Drive



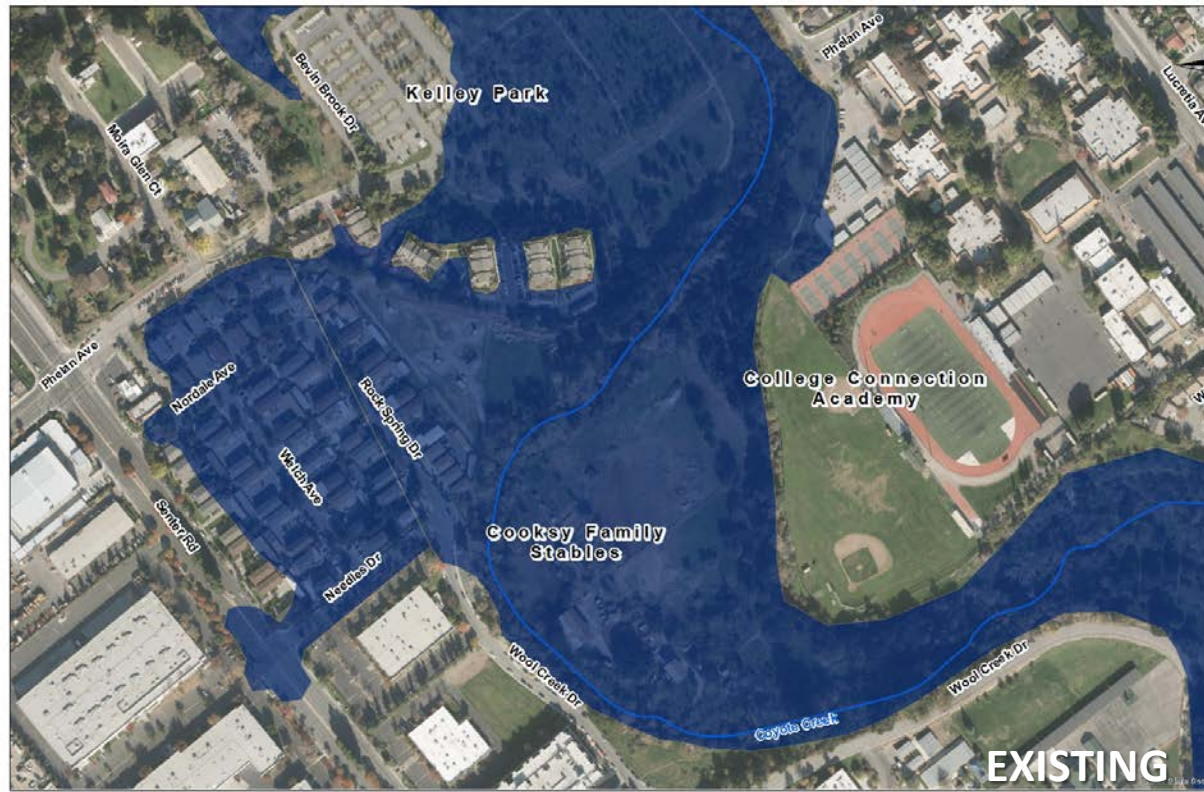
**Coyote Creek
I-280 to Tully Road
Reach 8
Conceptuals**

Reach 8

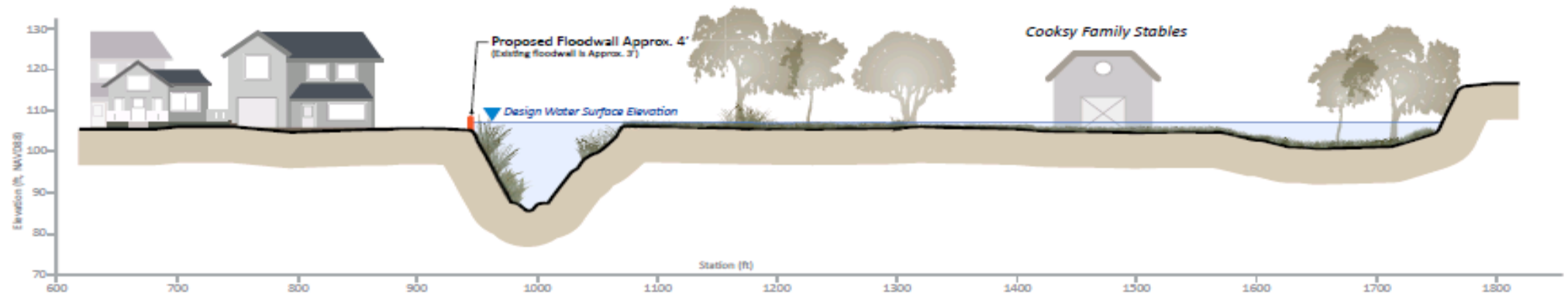


- Early Conceptual Alternatives**
- █ Vegetation Management
 - █ Berm/Floodwall
 - █ Floodwall
 - █ Widen Creek/Restore Floodplain
- Railroad**
- █ VTA
 - █ CALTRAIN
 - █ Southern Pacific
 - █ Western Pacific



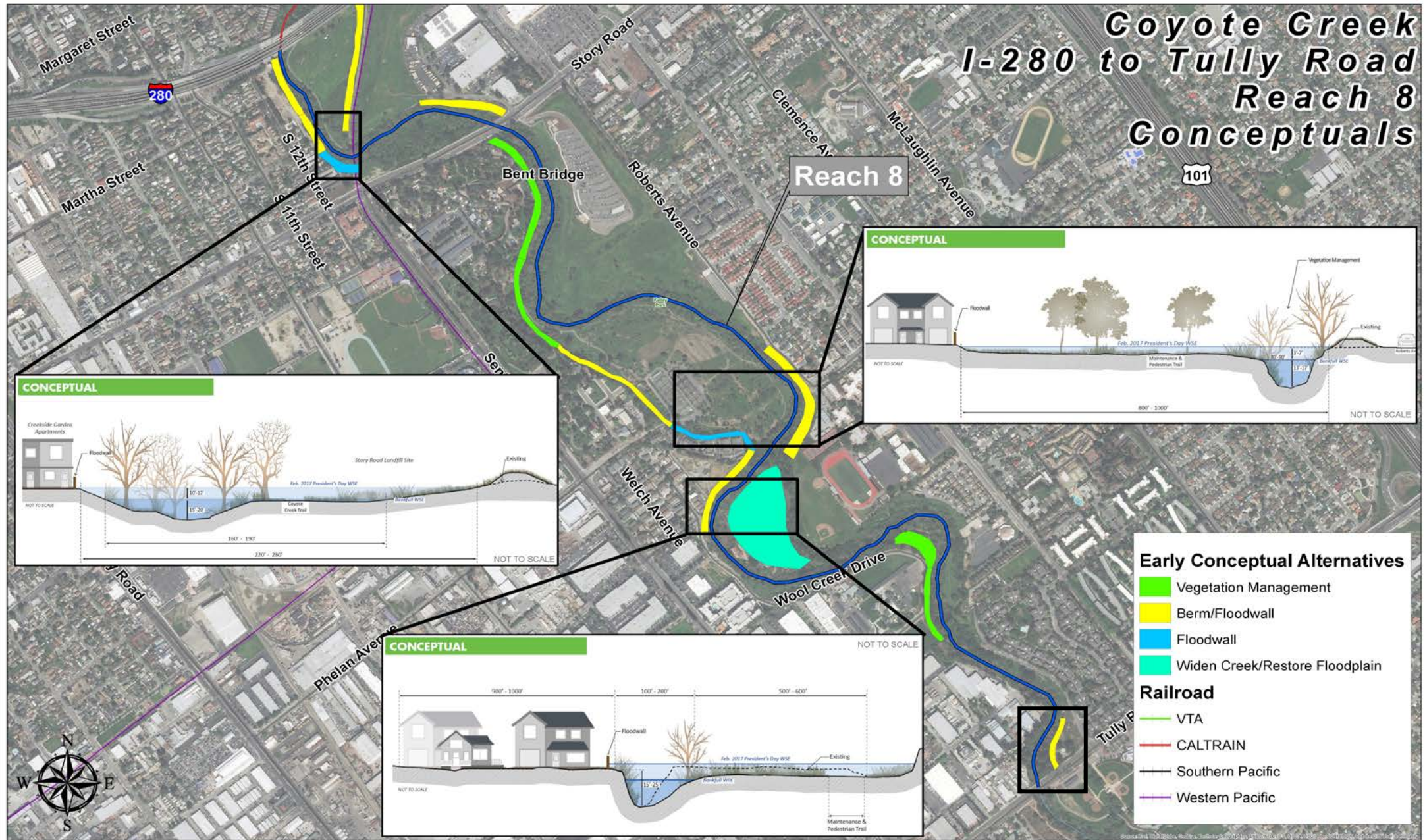


Rock Springs Community/Bevin Brook Dr



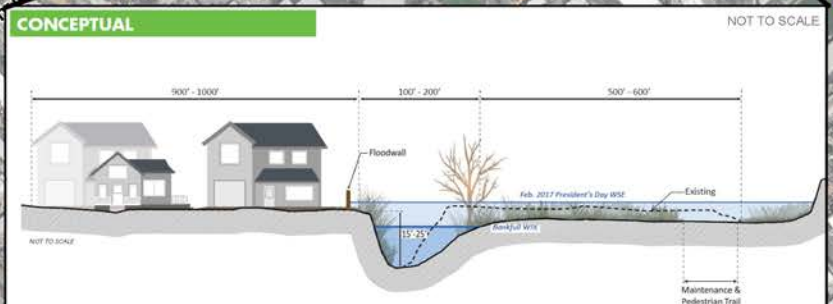
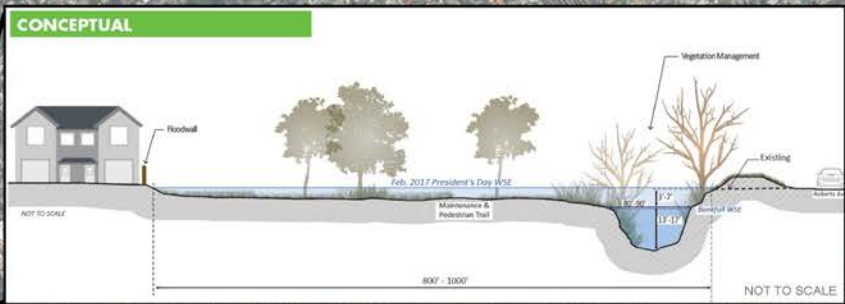
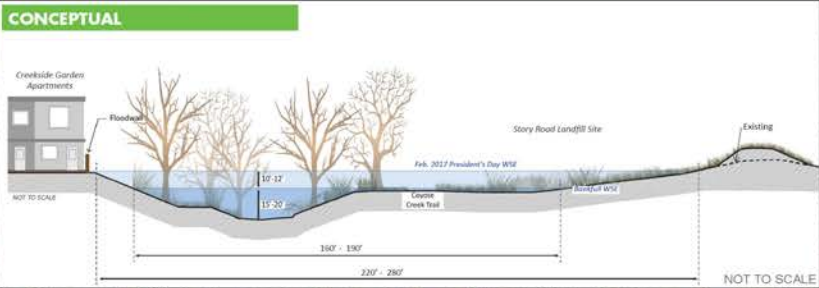
Reach 8 – Tully Road Groundwater Station

7



**Coyote Creek
I-280 to Tully Road
Reach 8
Conceptuals**

Reach 8



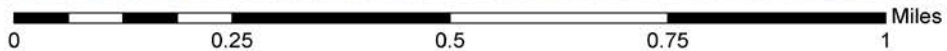
Early Conceptual Alternatives

- █ Vegetation Management
- █ Berm/Floodwall
- █ Floodwall
- █ Widen Creek/Restore Floodplain

Railroad

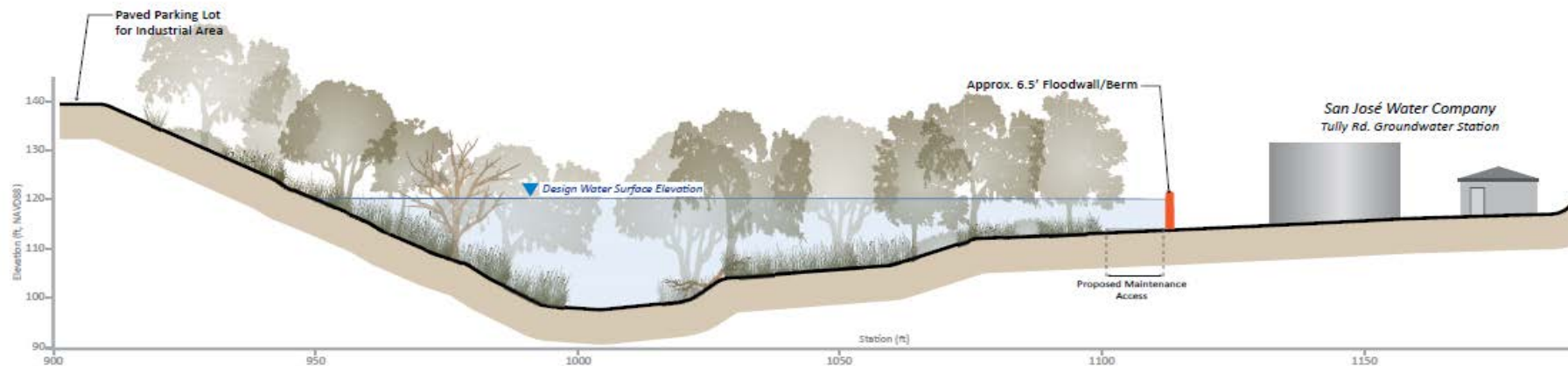
- █ VTA
- █ CALTRAIN
- █ Southern Pacific
- █ Western Pacific

valleywater.org





Flood Risk Reduction at Critical Facilities - Tully Rd Groundwater Station





\$ 2 M*

- Floodwalls/Berm

*Rough Order of Magnitude estimate, includes Highway 280 to Tully Road work (Reach 8)



If a flood event happens next year, what is Valley Water doing in terms of developing an early warning and notification system prior to a flood event?

➔ Joint Emergency Action Plan

20

- November 3rd, 2017, Valley Water Board of Directors and San José City Council approved a Joint Emergency Action Plan for Severe Storm and Flood Response
- Outlines how the City and Valley Water manage, prepare for and communicate about flooding issues on Coyote Creek as well as other waterways
- Establishes roles and responsibilities, who does what?

<https://www.valleywater.org/news-events/news-releases/district-and-city-approve-emergency-action-plan>

01.

Improves how we measure water levels in Coyote Creek

gis.valleywater.org/SCVWDF
loodWatch

02.

Communicates every stage of a potential flood using clear triggers for various actions

03.

Improves communication with the community using better tools and improved procedures

Preparedness	No storms are forecasted within the next 72 hours. Stream depths are below 50% of flood stage. Reservoirs are not spilling.
Flood Monitoring	Storms are forecasted. Stream depths are at 50% to 70% of flood stage. This condition is fluctuating and requires monitoring and being alert for potential flooding and possible evacuation notification.
Flood Watch	Storms have occurred. Stream depths may reach flood stage in 24 to 72 hours. Prepare for possible evacuation notice.
Flood Warning	Flooding is imminent, generally within 24 hours or is occurring.

Get Flood Ready

valleywater.org/floodready

Flood Protection Resources



Is your home in a flood zone?



Sign up for emergency alerts



Flood insurance



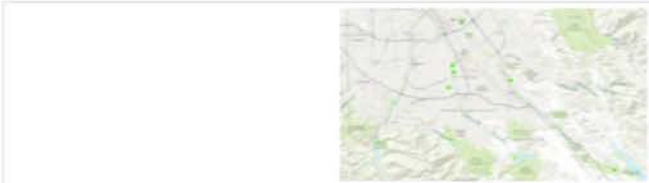
Flood safety advice: Before, During, After



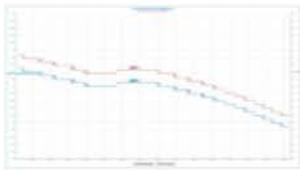
Sandbag distribution sites



Report creek blockages and local street flooding



SCVWD Map-Based Flood Watch Tool (Maps best viewed in Chrome, Firefox, Safari or IE 11)



Monitor Stream, Reservoir, Rainfall Levels with the ALERT gauge system

Project Components, Status and Timeline

Expedited Project Timeline: Assumes project alternative selected for implementation does not require extensive permitting

Components	2017	2018	2019	2020	2021	2022	2023	2024
Problem Definition		■						
Conceptual Alternatives			■					
Feasible Alternatives			■					
Planning Study Report				■				
Design and Permitting				■				
Construction						■		

Next Steps

Problem Definition Report: Nov 2017 – Jan 2019 (Draft Completed)

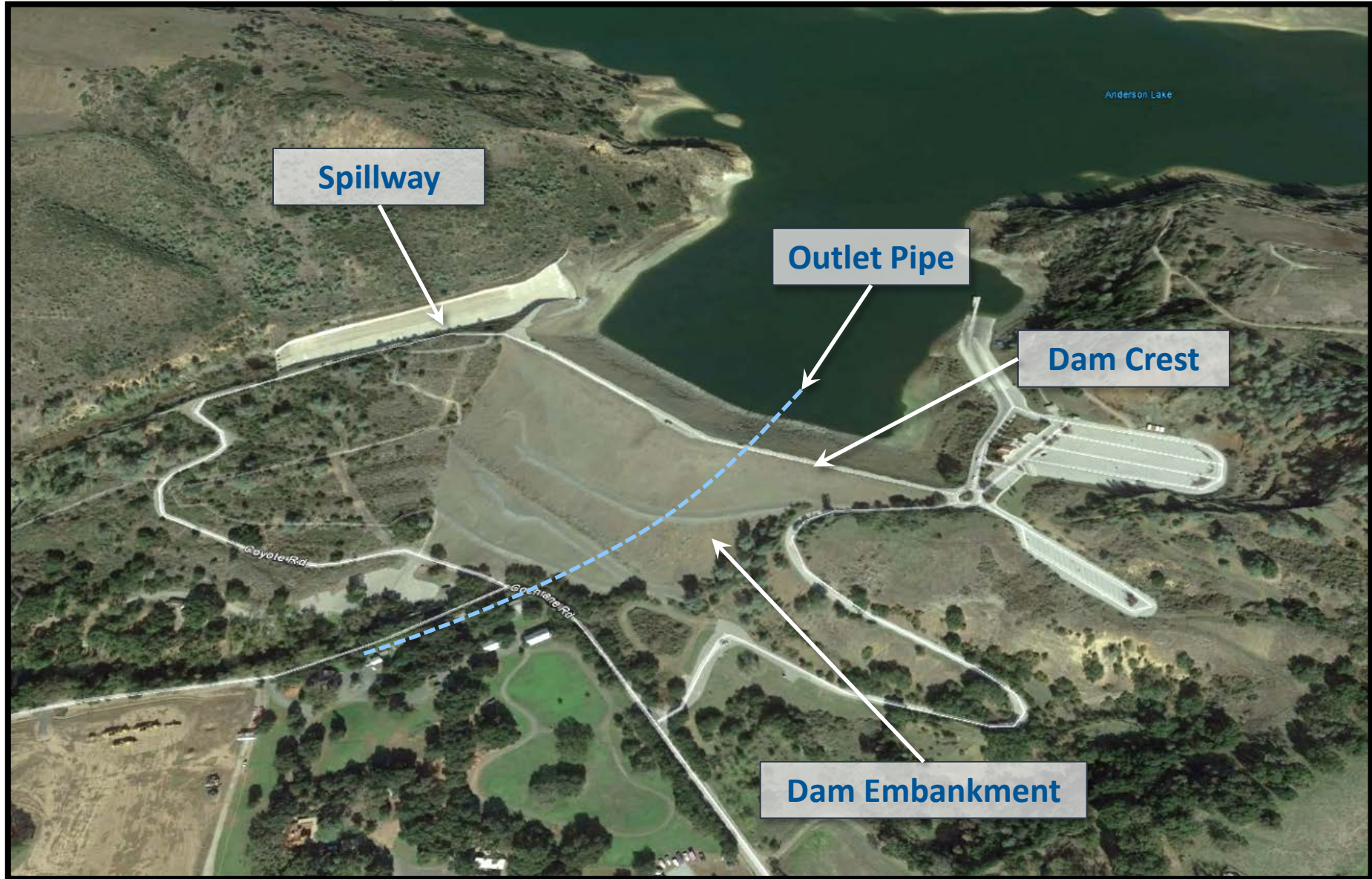
Conceptual and Feasible Alternatives: Sep 2018 - Sep 2019

→ **Planning Study Report: July 2019 – Jan 2020**

Design, CEQA and Permitting: Jan 2020 – Dec 2021

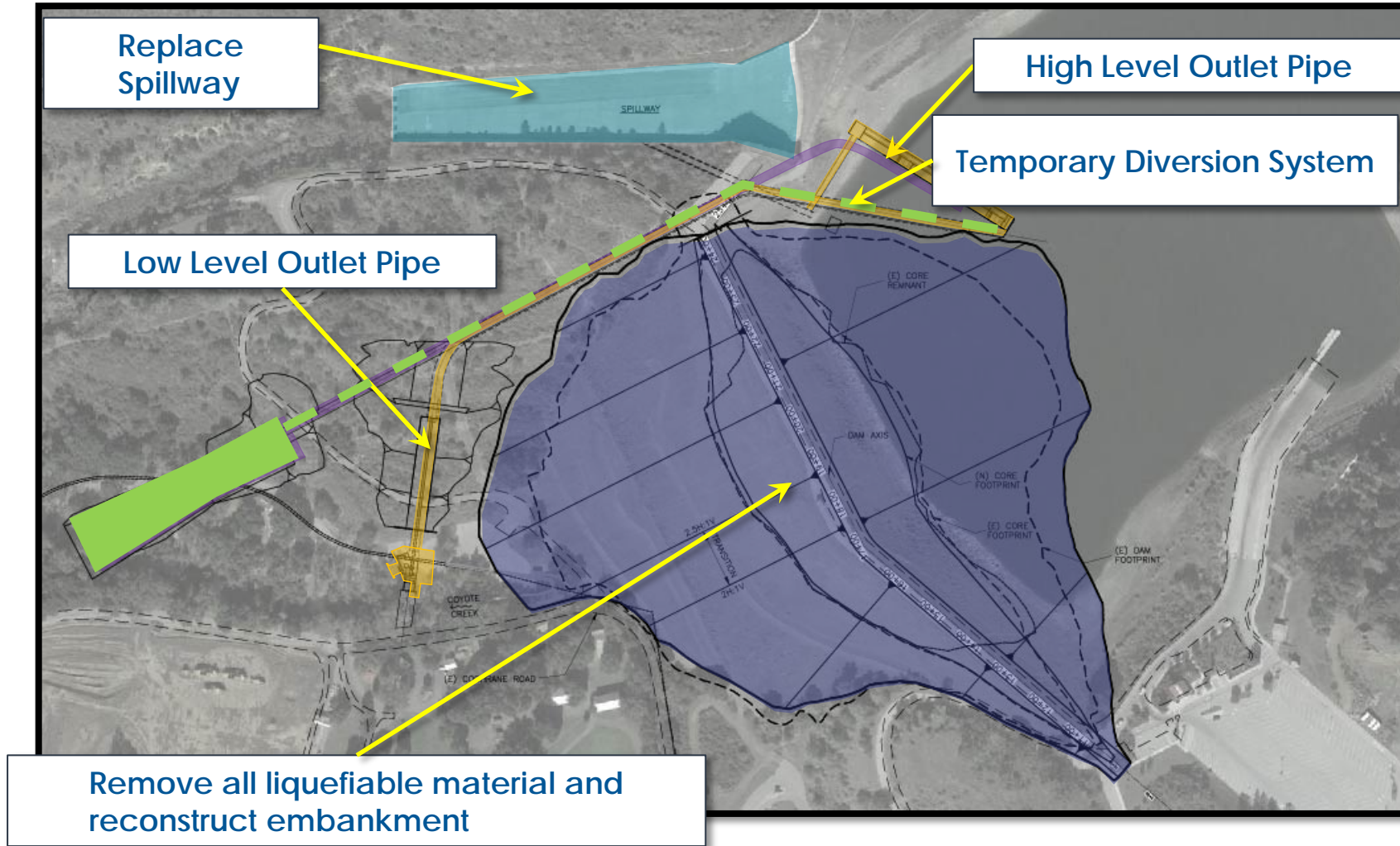
Construction: Jan 2022 – Dec 2024

Anderson Dam Existing Components

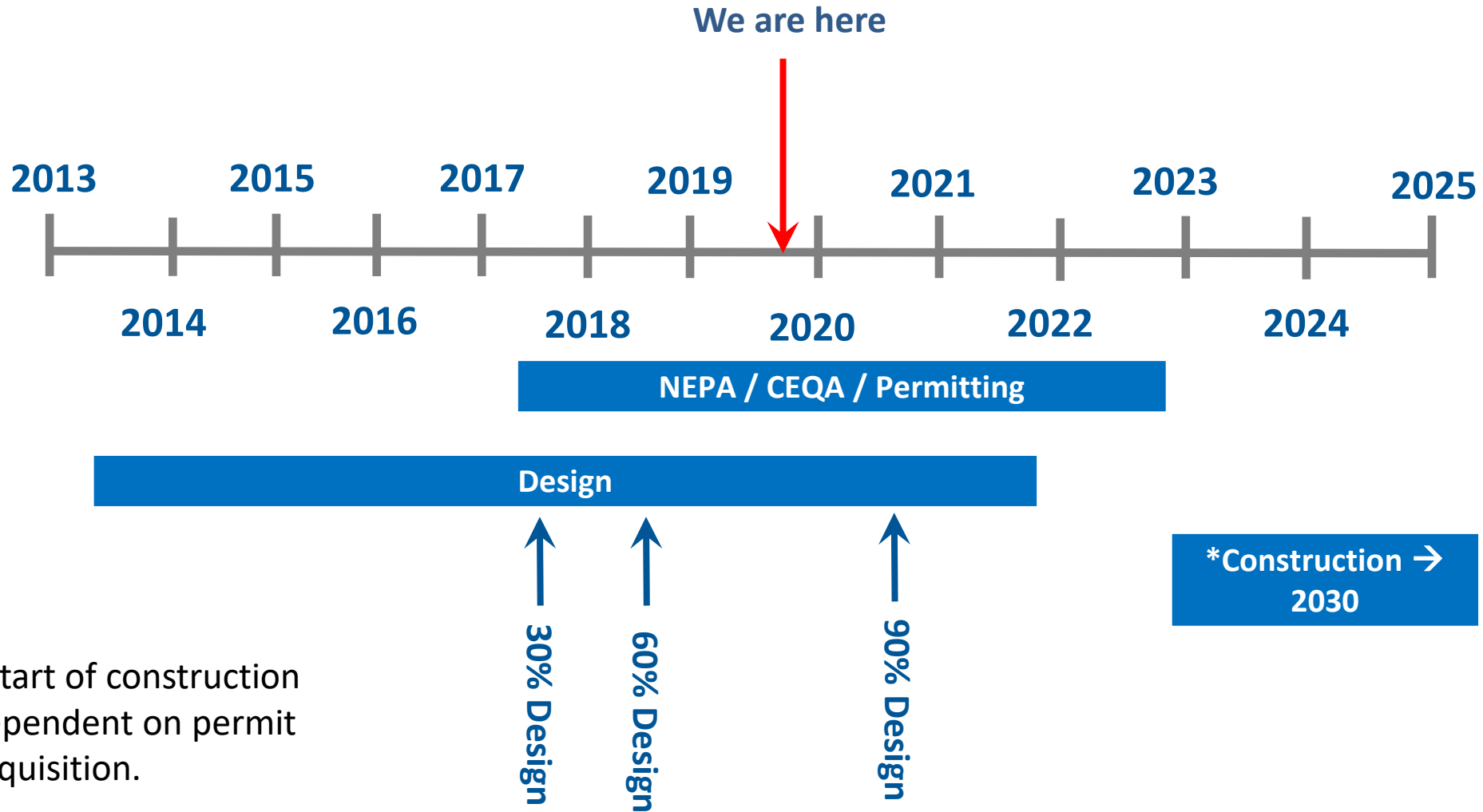


Anderson Dam Project Components

25



Project Schedule



*Start of construction dependent on permit acquisition.

For more information

Afshin Rouhani

ARouhani@valleywater.org

408-334-3646

Dámaris Villalobos-Galindo

DVillalobos-Galindo@valleywater.org

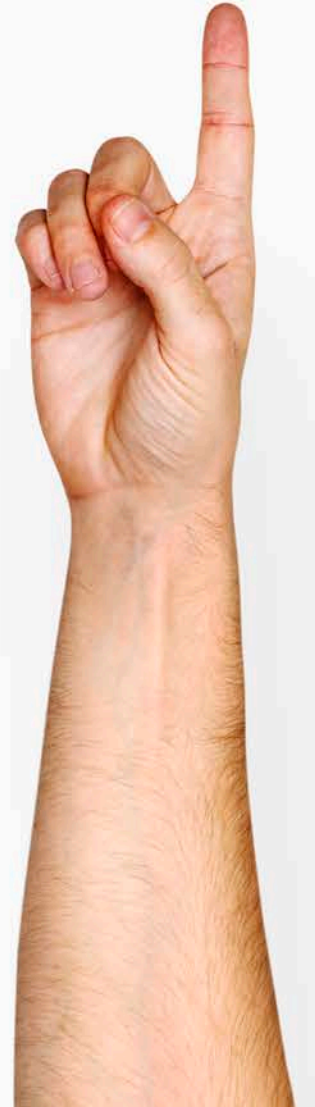
408-630-3165

Jose Villarreal

jvillarreal@valleywater.org

408-630-2879

QUESTIONS





Valley Water

Clean Water • Healthy Environment • Flood Protection