

The methods used to develop inundation zones and flood wave arrival times are approximate and should only be used as guidance for establishing evacuation zones. Actual areas inundated will depend on actual failure and pre-failure hydrologic conditions and may differ significantly from information shown on maps.

This map meets all applicable state and federal standards and has been prepared in consideration of all potential downstream hazards by a licensed civil engineer.

- Legend**
- Maximum Inundation Depth (feet)
 - <1
 - 2 to 5
 - 5 to 10
 - 10 to 20
 - >20
 - Flood Wave Arrival Time
 - Cities
 - Dams

Fair Weather (FW) failure assumes a dam failure at full capacity at the spillway lip without any additional inflow



Inundation Map for the Hypothetical Fair Weather Failure of **Guadalupe Dam**

Federal Dam ID: CA00294 State Dam ID: 72-009

Sheet 1 of 17

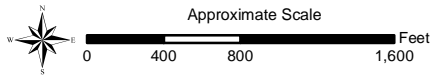
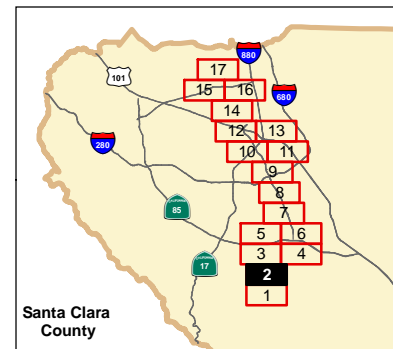
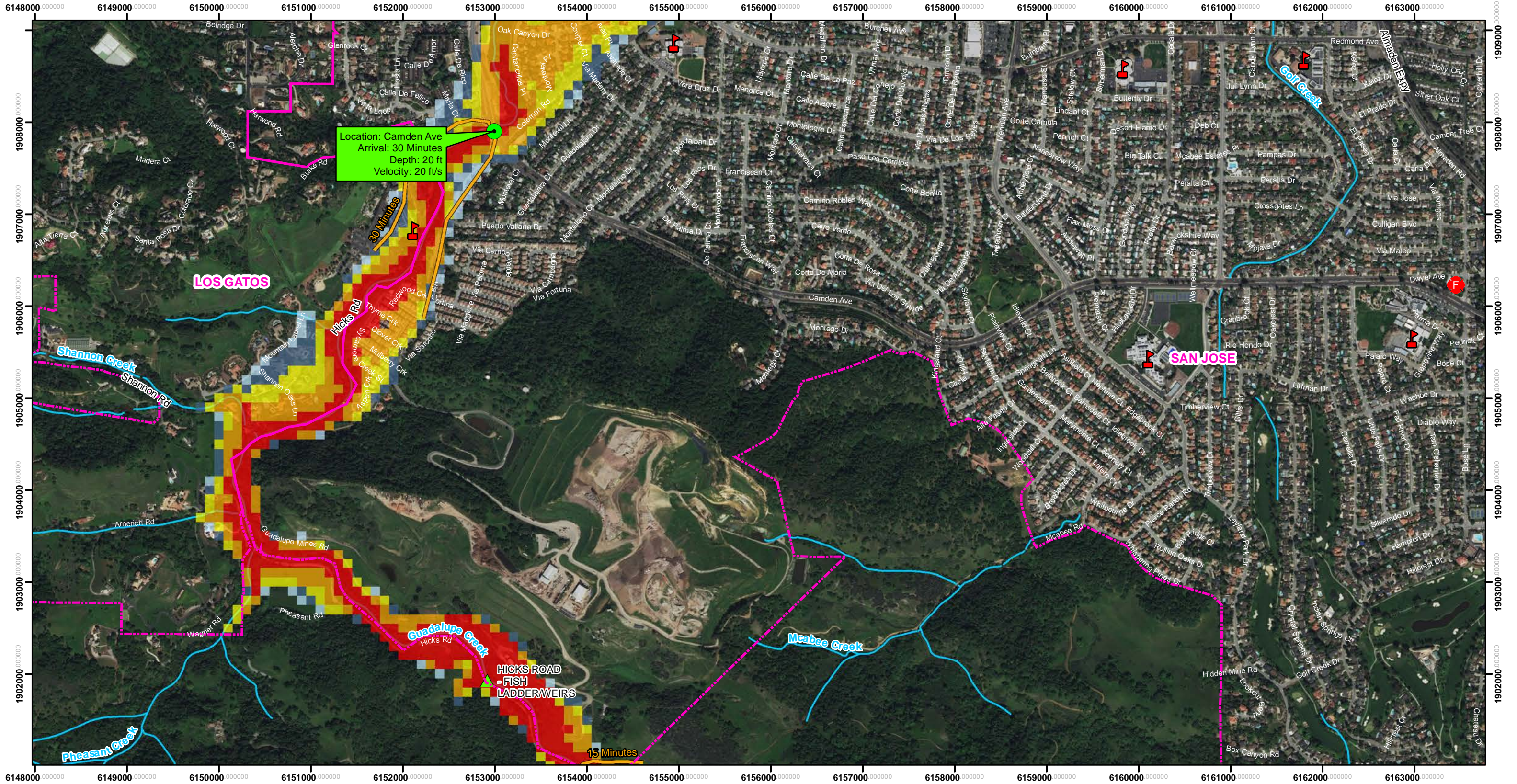
1 in = 1,000 ft

Dam Owner:
Santa Clara Valley Water District
5750 Almaden Exp
San Jose CA 95118

Inundation Analysis and maps created by SCVWD

August 2019

© 2019 Santa Clara Valley Water District



Vertical Datum: NAVD88, U.S. Feet

The methods used to develop inundation zones and flood wave arrival times are approximate and should only be used as guidance for establishing evacuation zones. Actual areas inundated will depend on actual failure and pre-failure hydrologic conditions and may differ significantly from information shown on maps.

This map meets all applicable state and federal standards and has been prepared in consideration of all potential downstream hazards by a licensed civil engineer.

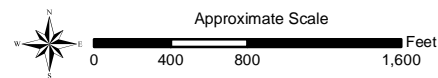
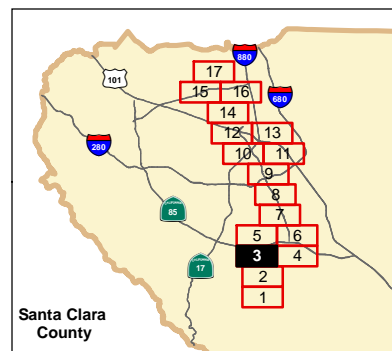
Legend

- Maximum Inundation Depth (feet)**
 - <1
 - 2 to 5
 - 5 to 10
 - 10 to 20
 - >20
- Cities
- Dams
- Schools
- Fire Stations
- Road Callouts
- Flood Wave Arrival Time

Fair Weather (FW) failure assumes a dam failure at full capacity at the spillway lip without any additional inflow



Inundation Map for the Hypothetical Fair Weather Failure of **Guadalupe Dam**
 Federal Dam ID: CA00294 State Dam ID: 72-009
Sheet 2 of 17
 1 in = 1,000 ft
 Dam Owner: Santa Clara Valley Water District
 5750 Almaden Exp
 San Jose CA 95118
 Inundation Analysis and maps created by SCVWD
 August 2019
 © 2019 Santa Clara Valley Water District



Vertical Datum: NAVD88, U.S. Feet

The methods used to develop inundation zones and flood wave arrival times are approximate and should only be used as guidance for establishing evacuation zones. Actual areas inundated will depend on actual failure and pre-failure hydrologic conditions and may differ significantly from information shown on maps.

This map meets all applicable state and federal standards and has been prepared in consideration of all potential downstream hazards by a licensed civil engineer.

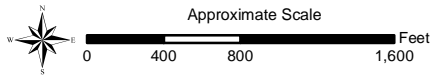
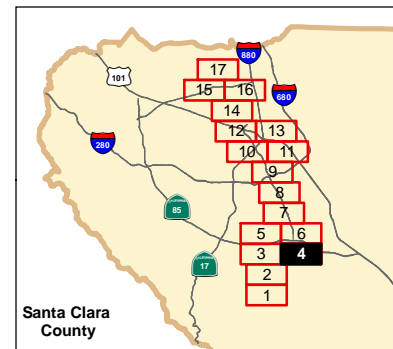
Legend

- Maximum Inundation Depth (feet)**
- <1
- 2 to 5
- 5 to 10
- 10 to 20
- Flood Wave Arrival Time
- Cities
- Dams
- Schools
- Fire Stations
- Road Callouts

Fair Weather (FW) failure assumes a dam failure at full capacity at the spillway lip without any additional inflow



Inundation Map for the Hypothetical Fair Weather Failure of **Guadalupe Dam**
 Federal Dam ID: CA00294 State Dam ID: 72-009
Sheet 3 of 17
 1 in = 1,000 ft
 Dam Owner: Santa Clara Valley Water District
 5750 Almaden Exp
 San Jose CA 95118
 Inundation Analysis and maps created by SCWWD
 August 2019
 © 2019 Santa Clara Valley Water District



Vertical Datum: NAVD88, U.S. Feet

The methods used to develop inundation zones and flood wave arrival times are approximate and should only be used as guidance for establishing evacuation zones. Actual areas inundated will depend on actual failure and pre-failure hydrologic conditions and may differ significantly from information shown on maps.

This map meets all applicable state and federal standards and has been prepared in consideration of all potential downstream hazards by a licensed civil engineer.

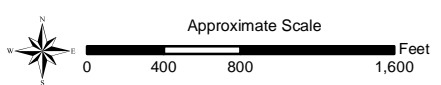
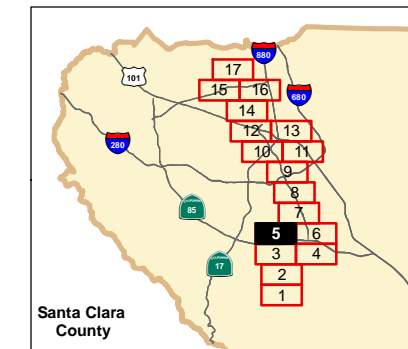
Legend

- Maximum Inundation Depth (feet)**
 - <1
 - 2 to 5
 - 5 to 10
 - 10 to 20
- Cities
- Dams
- Schools
- F Fire Stations
- Road Callouts
- Flood Wave Arrival Time

Fair Weather (FW) failure assumes a dam failure at full capacity at the spillway lip without any additional inflow



Inundation Map for the Hypothetical Fair Weather Failure of **Guadalupe Dam**
 Federal Dam ID: CA00294 State Dam ID: 72-009
Sheet 4 of 17
 1 in = 1,000 ft
 Dam Owner: Santa Clara Valley Water District
 5750 Almaden Exp
 San Jose CA 95118
 Inundation Analysis and maps created by SCVWD
 August 2019
 © 2019 Santa Clara Valley Water District



Vertical Datum: NAVD88, U.S. Feet

The methods used to develop inundation zones and flood wave arrival times are approximate and should only be used as guidance for establishing evacuation zones. Actual areas inundated will depend on actual failure and pre-failure hydrologic conditions and may differ significantly from information shown on maps.

This map meets all applicable state and federal standards and has been prepared in consideration of all potential downstream hazards by a licensed civil engineer.

Legend

- Maximum Inundation Depth (feet)**
 - <1
 - 2 to 5
 - 5 to 10
 - 10 to 20
- Cities
- ▲ Schools
- F Fire Stations
- Road Callouts

Fair Weather (FW) failure assumes a dam failure at full capacity at the spillway lip without any additional inflow



Inundation Map for the Hypothetical Fair Weather Failure of **Guadalupe Dam**

Federal Dam ID: CA00294 State Dam ID: 72-009

Sheet 5 of 17

1 in = 1,000 ft

Dam Owner:
Santa Clara Valley Water District
5750 Almaden Exp
San Jose CA 95118

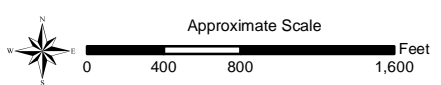
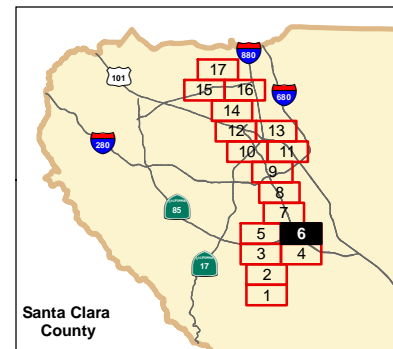
Inundation Analysis and maps created by SCVWD

August 2019

© 2019 Santa Clara Valley Water District



Location: Branham Ln
 Arrival: 2 Hours
 Depth: 3 ft
 Velocity: 3 ft/s



Vertical Datum: NAVD88, U.S. Feet

The methods used to develop inundation zones and flood wave arrival times are approximate and should only be used as guidance for establishing evacuation zones. Actual areas inundated will depend on actual failure and pre-failure hydrologic conditions and may differ significantly from information shown on maps.

This map meets all applicable state and federal standards and has been prepared in consideration of all potential downstream hazards by a licensed civil engineer.

- Legend**
- <1
 - 2 to 5
 - 5 to 10
 - 10 to 20
 - Flood Wave Arrival Time
 - Cities
 - ▲ Schools
 - F Fire Stations
 - Road Callouts

Fair Weather (FW) failure assumes a dam failure at full capacity at the spillway lip without any additional inflow



Inundation Map for the Hypothetical Fair Weather Failure of **Guadalupe Dam**

Federal Dam ID: CA00294 State Dam ID: 72-009

Sheet 6 of 17

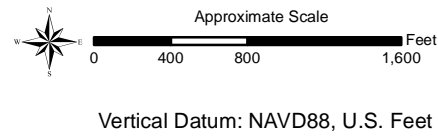
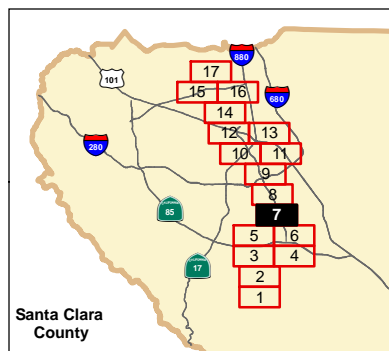
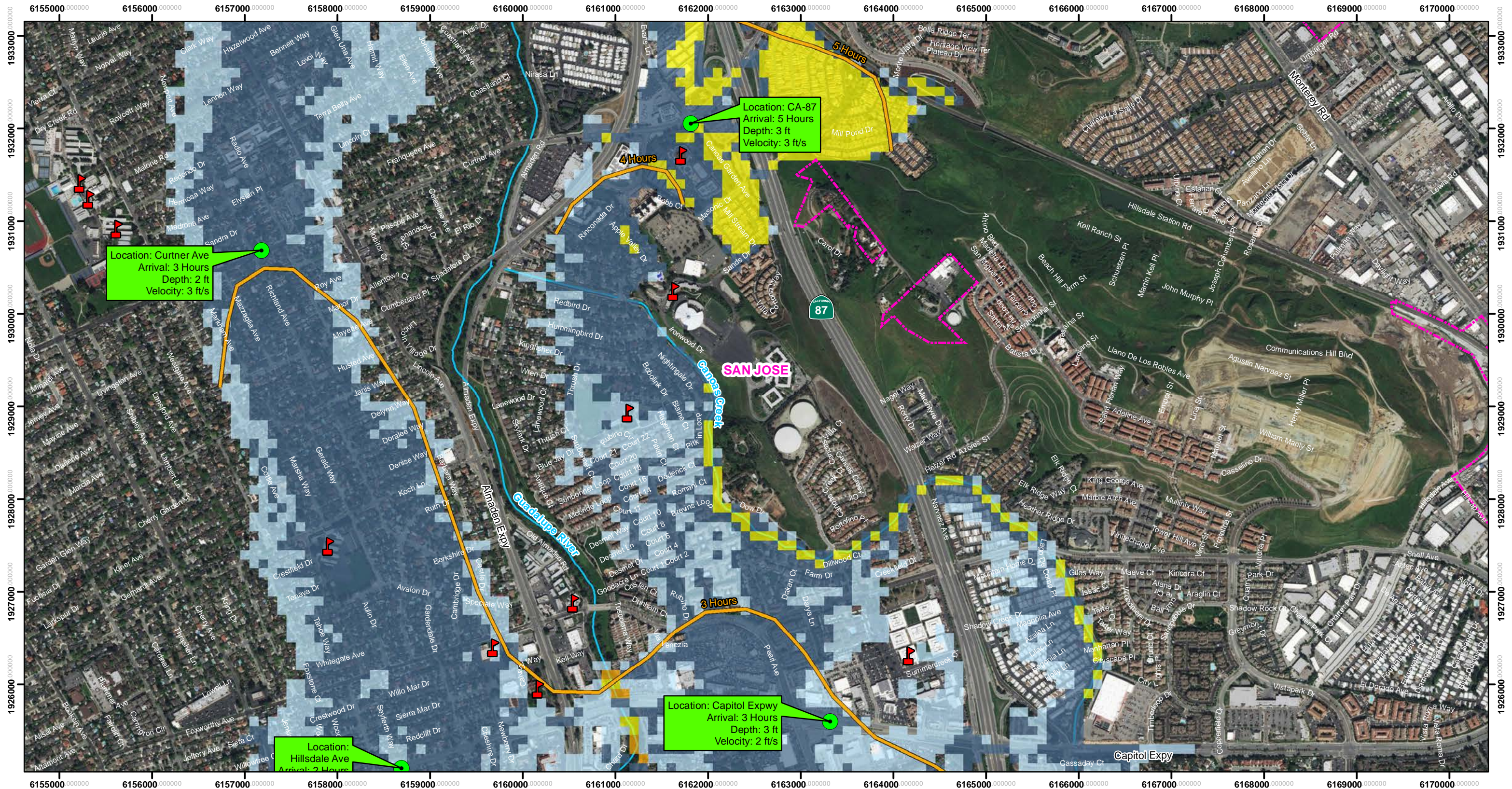
1 in = 1,000 ft

Dam Owner:
 Santa Clara Valley Water District
 5750 Almaden Exp
 San Jose CA 95118

Inundation Analysis and maps created by SCWMD

August 2019

© 2019 Santa Clara Valley Water District



The methods used to develop inundation zones and flood wave arrival times are approximate and should only be used as guidance for establishing evacuation zones. Actual areas inundated will depend on actual failure and pre-failure hydrologic conditions and may differ significantly from information shown on maps.

This map meets all applicable state and federal standards and has been prepared in consideration of all potential downstream hazards by a licensed civil engineer.

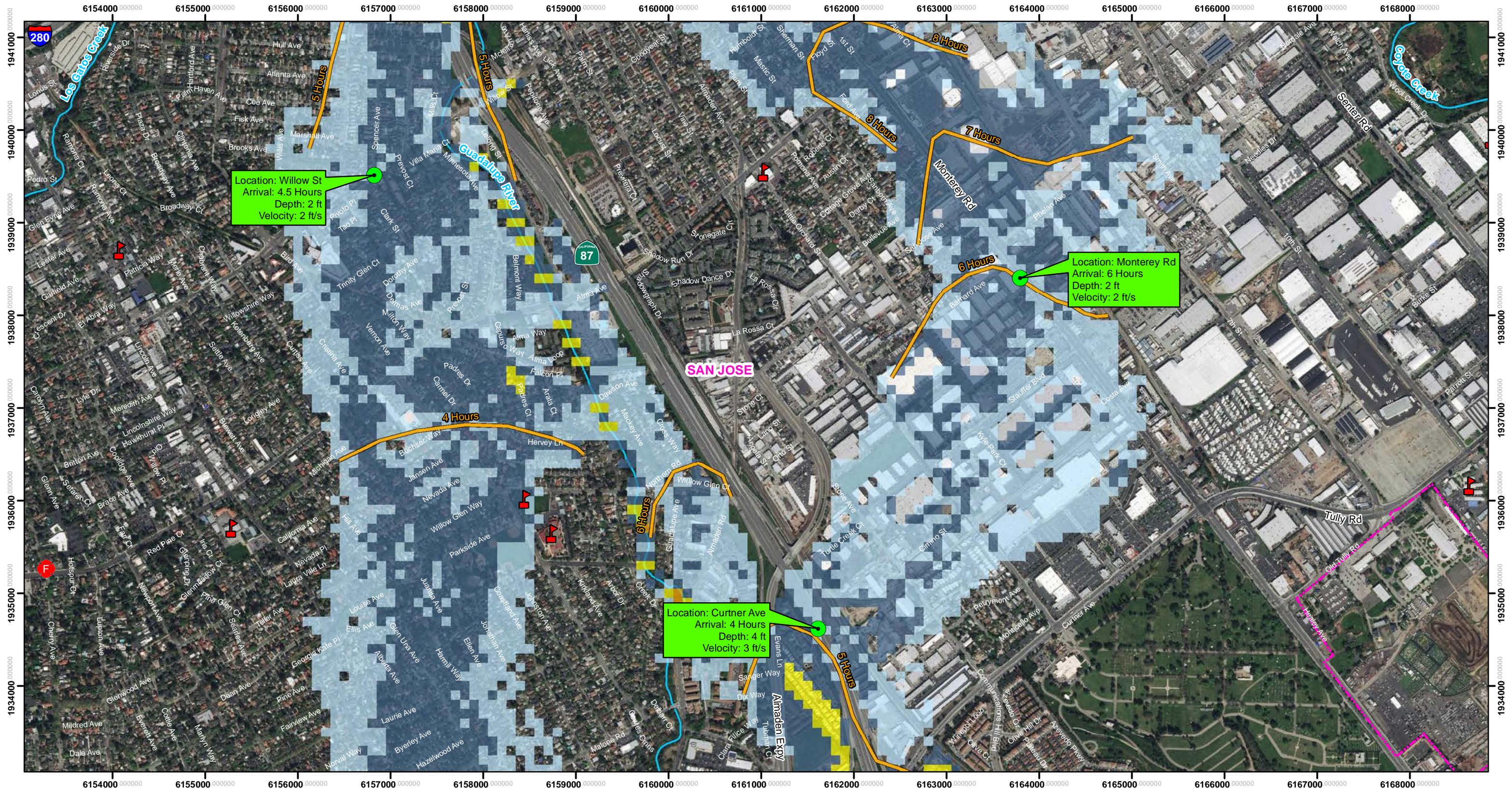
Legend

- <1
- 2 to 5
- 5 to 10
- 10 to 20
- Flood Wave Arrival Time
- Cities
- Schools
- Road Callouts

Fair Weather (FW) failure assumes a dam failure at full capacity at the spillway lip without any additional inflow



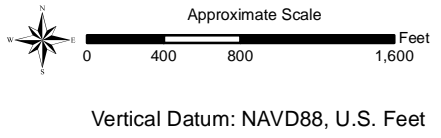
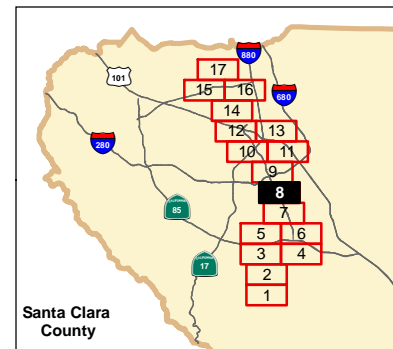
Inundation Map for the Hypothetical Fair Weather Failure of **Guadalupe Dam**
 Federal Dam ID: CA00294 State Dam ID: 72-009
Sheet 7 of 17
 1 in = 1,000 ft
 Dam Owner: Santa Clara Valley Water District
 5750 Almaden Exp
 San Jose CA 95118
 Inundation Analysis and maps created by SCWMD
 August 2019
 © 2019 Santa Clara Valley Water District



Location: Willow St
 Arrival: 4.5 Hours
 Depth: 2 ft
 Velocity: 2 ft/s

Location: Monterey Rd
 Arrival: 6 Hours
 Depth: 2 ft
 Velocity: 2 ft/s

Location: Curtner Ave
 Arrival: 4 Hours
 Depth: 4 ft
 Velocity: 3 ft/s



The methods used to develop inundation zones and flood wave arrival times are approximate and should only be used as guidance for establishing evacuation zones. Actual areas inundated will depend on actual failure and pre-failure hydrologic conditions and may differ significantly from information shown on maps.

This map meets all applicable state and federal standards and has been prepared in consideration of all potential downstream hazards by a licensed civil engineer.

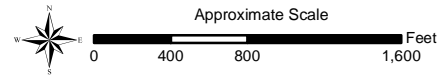
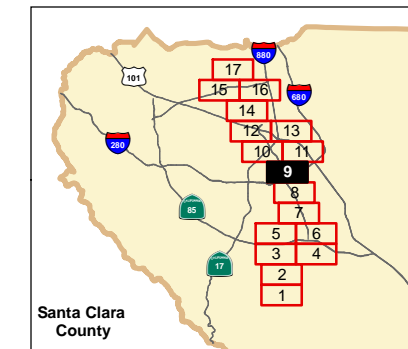
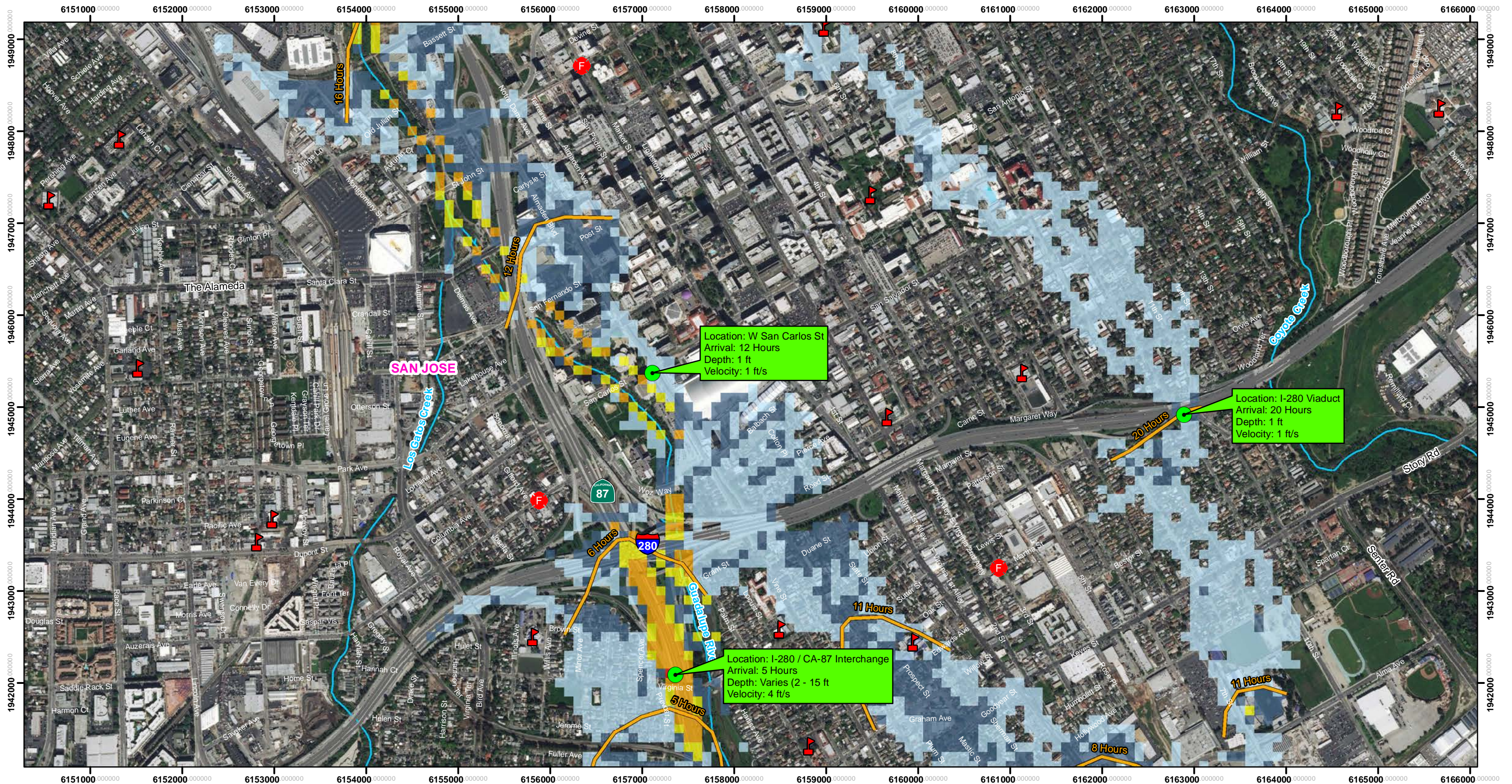
Legend

- Maximum Inundation Depth (feet)**
- <1
- 2 to 5
- 5 to 10
- 10 to 20
- Flood Wave Arrival Time
- Cities
- Schools
- Fire Stations
- Road Callouts

Fair Weather (FW) failure assumes a dam failure at full capacity at the spillway lip without any additional inflow



Inundation Map for the Hypothetical Fair Weather Failure of **Guadalupe Dam**
 Federal Dam ID: CA00294 State Dam ID: 72-009
Sheet 8 of 17
 1 in = 1,000 ft
 Dam Owner: Santa Clara Valley Water District
 5750 Almaden Exp
 San Jose CA 95118
 Inundation Analysis and maps created by SCVWD
 August 2019
 © 2019 Santa Clara Valley Water District



Vertical Datum: NAVD88, U.S. Feet

The methods used to develop inundation zones and flood wave arrival times are approximate and should only be used as guidance for establishing evacuation zones. Actual areas inundated will depend on actual failure and pre-failure hydrologic conditions and may differ significantly from information shown on maps.

This map meets all applicable state and federal standards and has been prepared in consideration of all potential downstream hazards by a licensed civil engineer.

- Legend**
- Maximum Inundation Depth (feet)**
 - <1
 - 2 to 5
 - 5 to 10
 - 10 to 20
 - >20
 - Flood Wave Arrival Time**
 - Cities**
 - Schools**
 - Fire Stations**
 - Road Callouts**

Fair Weather (FW) failure assumes a dam failure at full capacity at the spillway lip without any additional inflow



Inundation Map for the Hypothetical Fair Weather Failure of **Guadalupe Dam**

Federal Dam ID: CA00294 State Dam ID: 72-009

Sheet 9 of 17

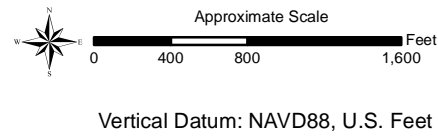
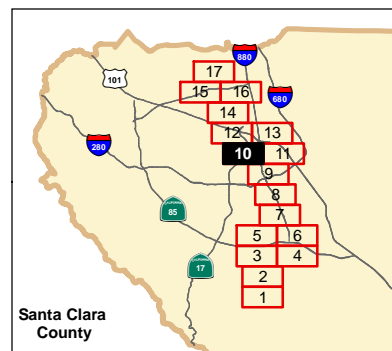
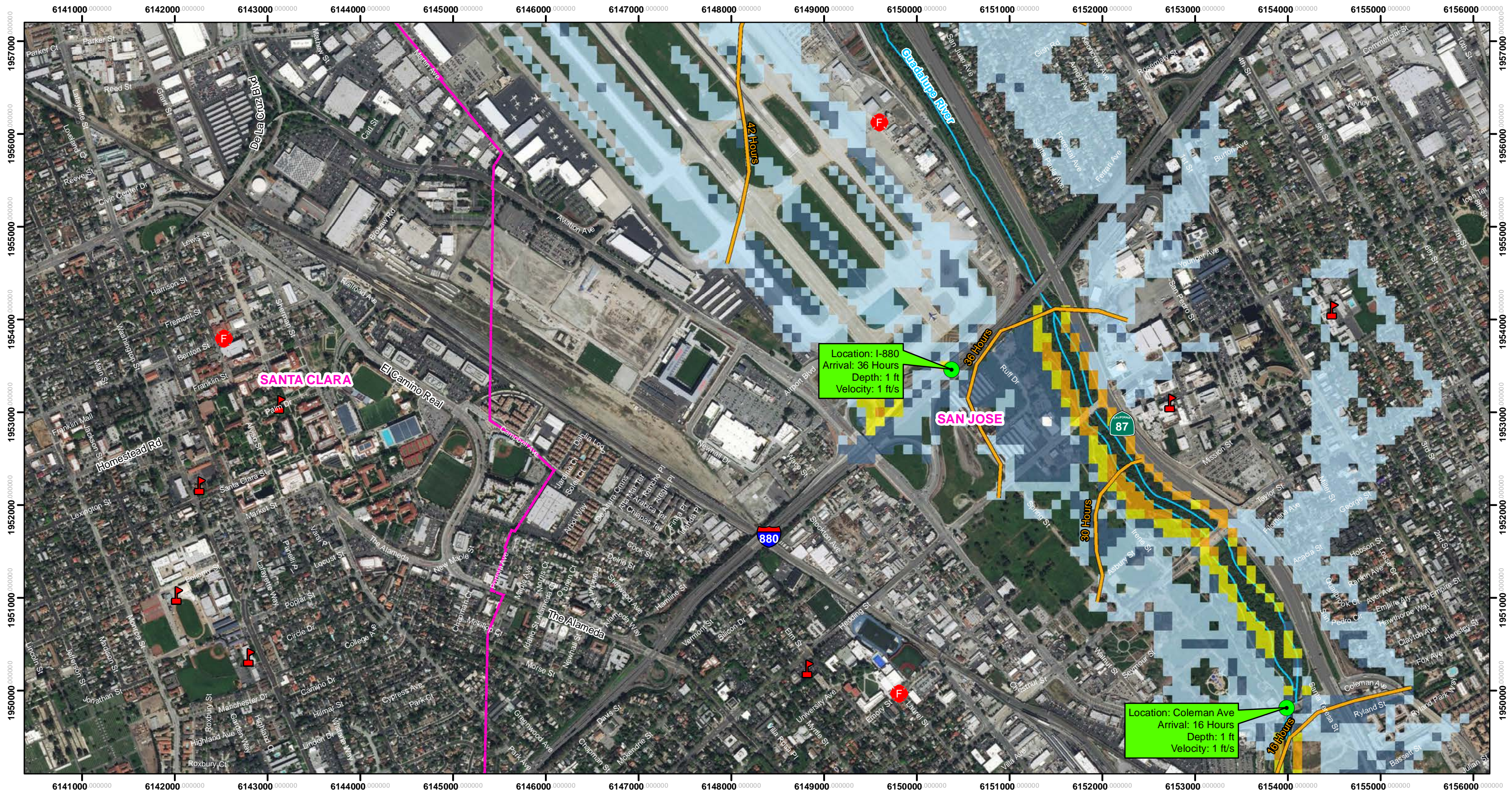
1 in = 1,000 ft

Dam Owner: Santa Clara Valley Water District
5750 Almaden Exp
San Jose CA 95118

Inundation Analysis and maps created by SCVWD

August 2019

© 2019 Santa Clara Valley Water District



The methods used to develop inundation zones and flood wave arrival times are approximate and should only be used as guidance for establishing evacuation zones. Actual areas inundated will depend on actual failure and pre-failure hydrologic conditions and may differ significantly from information shown on maps.

This map meets all applicable state and federal standards and has been prepared in consideration of all potential downstream hazards by a licensed civil engineer.

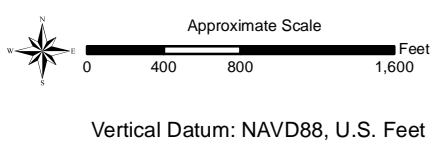
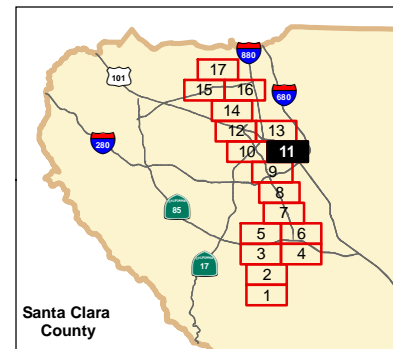
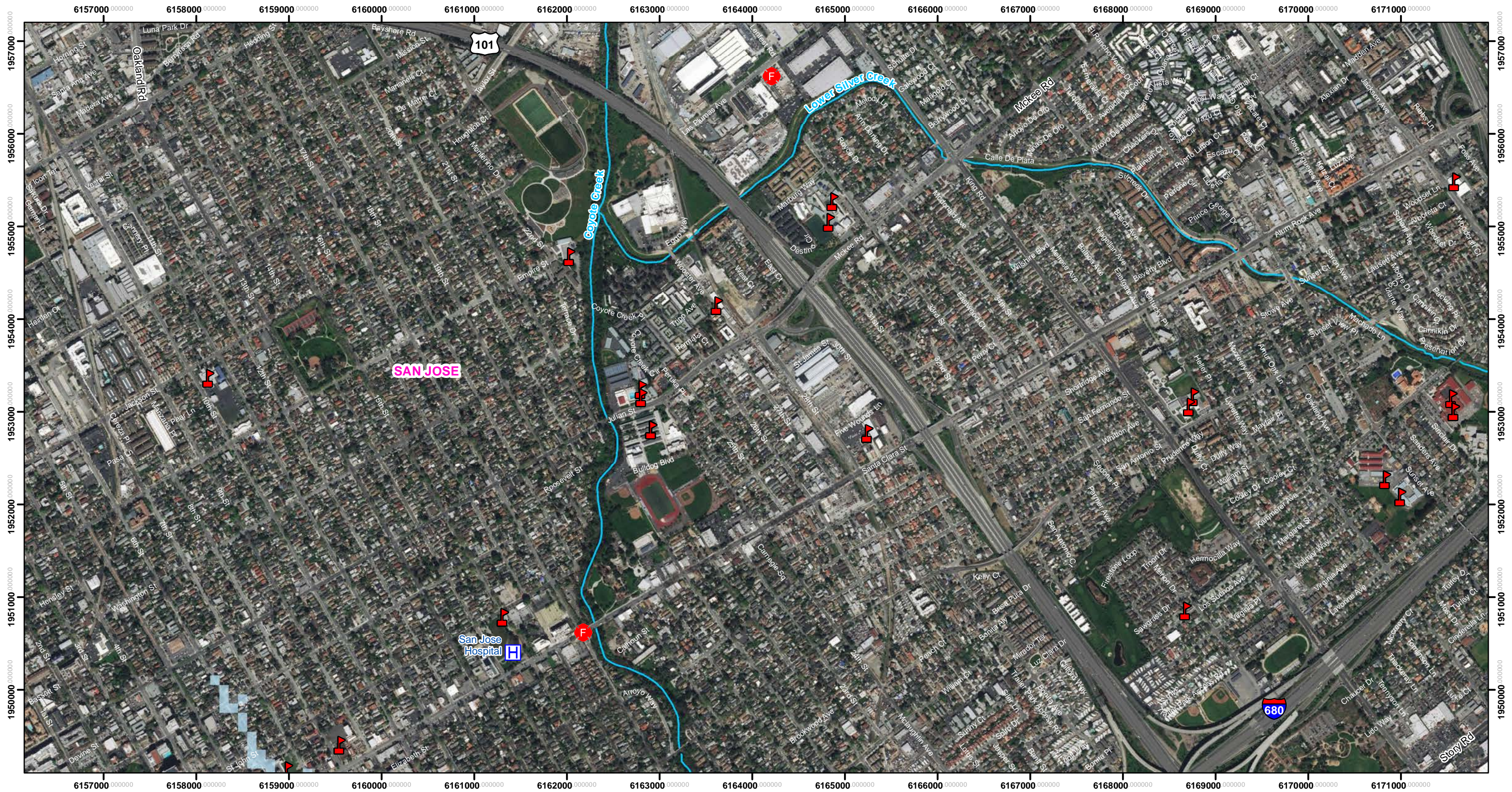
Legend

- Maximum Inundation Depth (feet)**
 - <1
 - 2 to 5
 - 5 to 10
 - 10 to 20
- Cities
- Schools
- Fire Stations
- Road Callouts

Fair Weather (FW) failure assumes a dam failure at full capacity at the spillway lip without any additional inflow



Inundation Map for the Hypothetical Fair Weather Failure of **Guadalupe Dam**
 Federal Dam ID: CA00294 State Dam ID: 72-009
Sheet 10 of 17
 1 in = 1,000 ft
 Dam Owner: Santa Clara Valley Water District
 5750 Almaden Exp
 San Jose CA 95118
 Inundation Analysis and maps created by SCWMD
 August 2019
 © 2019 Santa Clara Valley Water District



The methods used to develop inundation zones and flood wave arrival times are approximate and should only be used as guidance for establishing evacuation zones. Actual areas inundated will depend on actual failure and pre-failure hydrologic conditions and may differ significantly from information shown on maps.

This map meets all applicable state and federal standards and has been prepared in consideration of all potential downstream hazards by a licensed civil engineer.

- Legend**
- Maximum Inundation Depth (feet)
 - <1
 - Cities
 - ▲ Schools
 - Hospitals
 - F Fire Stations

Fair Weather (FW) failure assumes a dam failure at full capacity at the spillway lip without any additional inflow



Inundation Map for the Hypothetical Fair Weather Failure of **Guadalupe Dam**

Federal Dam ID: CA00294 State Dam ID: 72-009

Sheet 11 of 17

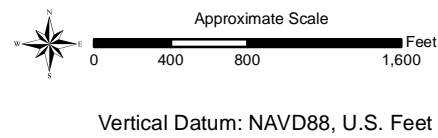
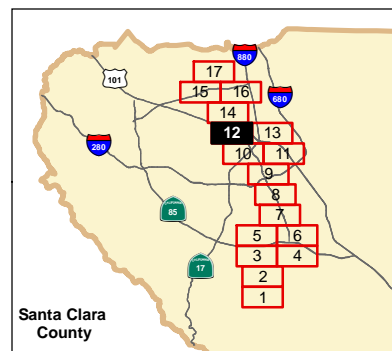
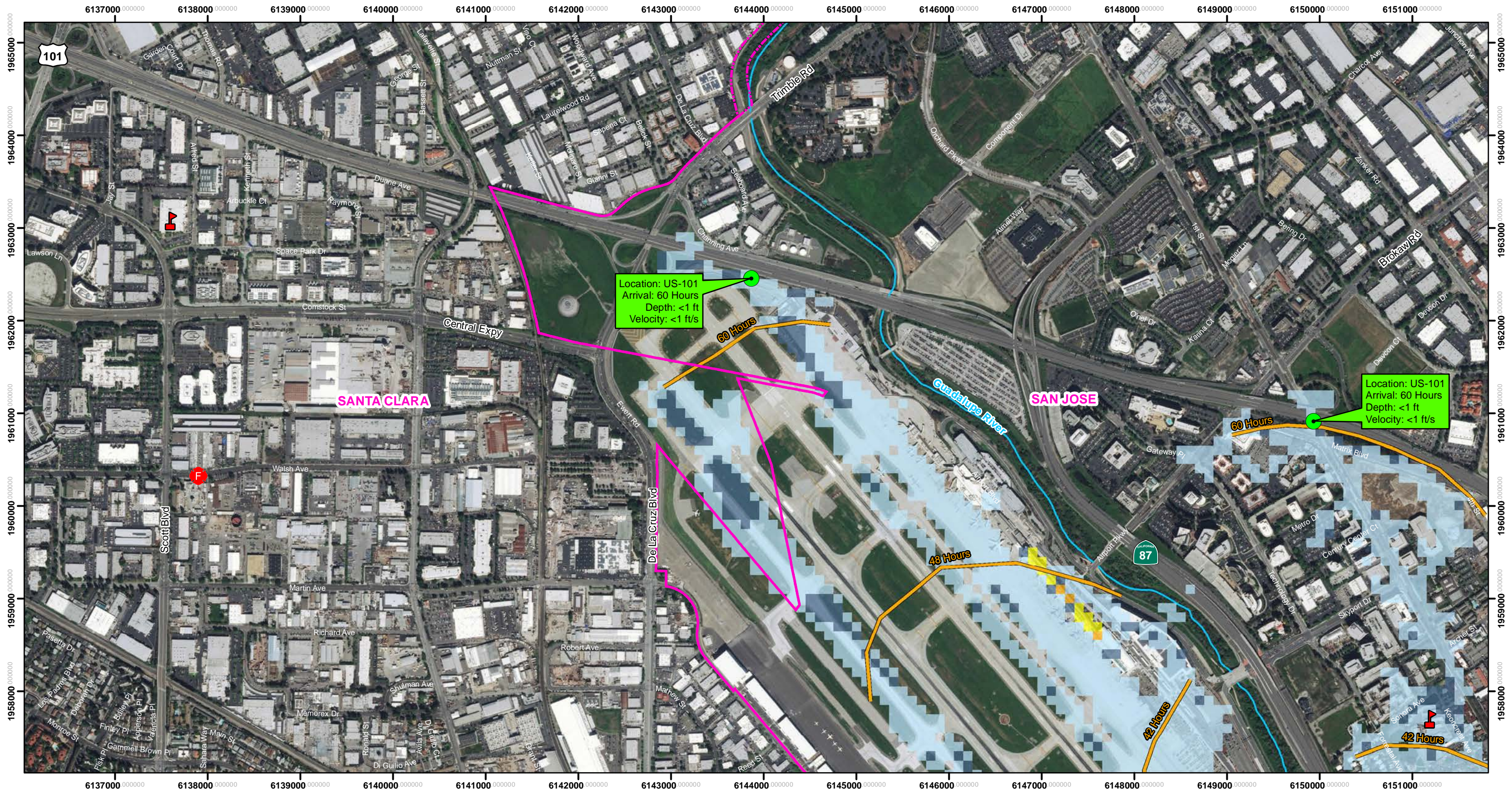
1 in = 1,000 ft

Dam Owner:
Santa Clara Valley Water District
5750 Almaden Exp
San Jose CA 95118

Inundation Analysis and maps created by SCVWD

August 2019

© 2019 Santa Clara Valley Water District



The methods used to develop inundation zones and flood wave arrival times are approximate and should only be used as guidance for establishing evacuation zones. Actual areas inundated will depend on actual failure and pre-failure hydrologic conditions and may differ significantly from information shown on maps.

This map meets all applicable state and federal standards and has been prepared in consideration of all potential downstream hazards by a licensed civil engineer.

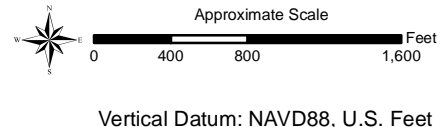
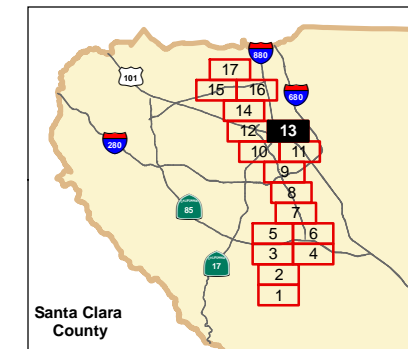
Legend

- Maximum Inundation Depth (feet)**
 - <1
 - 2 to 5
 - 5 to 10
 - 10 to 20
- Cities
- F Schools
- F Fire Stations
- Road Callouts
- Flood Wave Arrival Time

Fair Weather (FW) failure assumes a dam failure at full capacity at the spillway lip without any additional inflow



Inundation Map for the Hypothetical Fair Weather Failure of **Guadalupe Dam**
 Federal Dam ID: CA00294 State Dam ID: 72-009
Sheet 12 of 17
 1 in = 1,000 ft
 Dam Owner: Santa Clara Valley Water District
 5750 Almaden Exp
 San Jose CA 95118
 Inundation Analysis and maps created by SCVWD
 August 2019
 © 2019 Santa Clara Valley Water District



The methods used to develop inundation zones and flood wave arrival times are approximate and should only be used as guidance for establishing evacuation zones. Actual areas inundated will depend on actual failure and pre-failure hydrologic conditions and may differ significantly from information shown on maps.

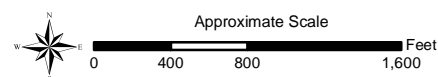
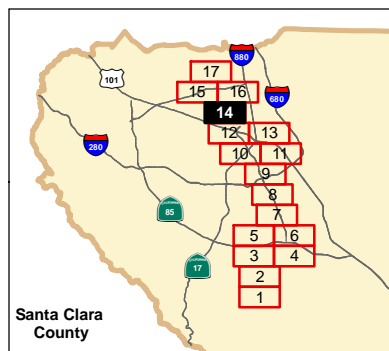
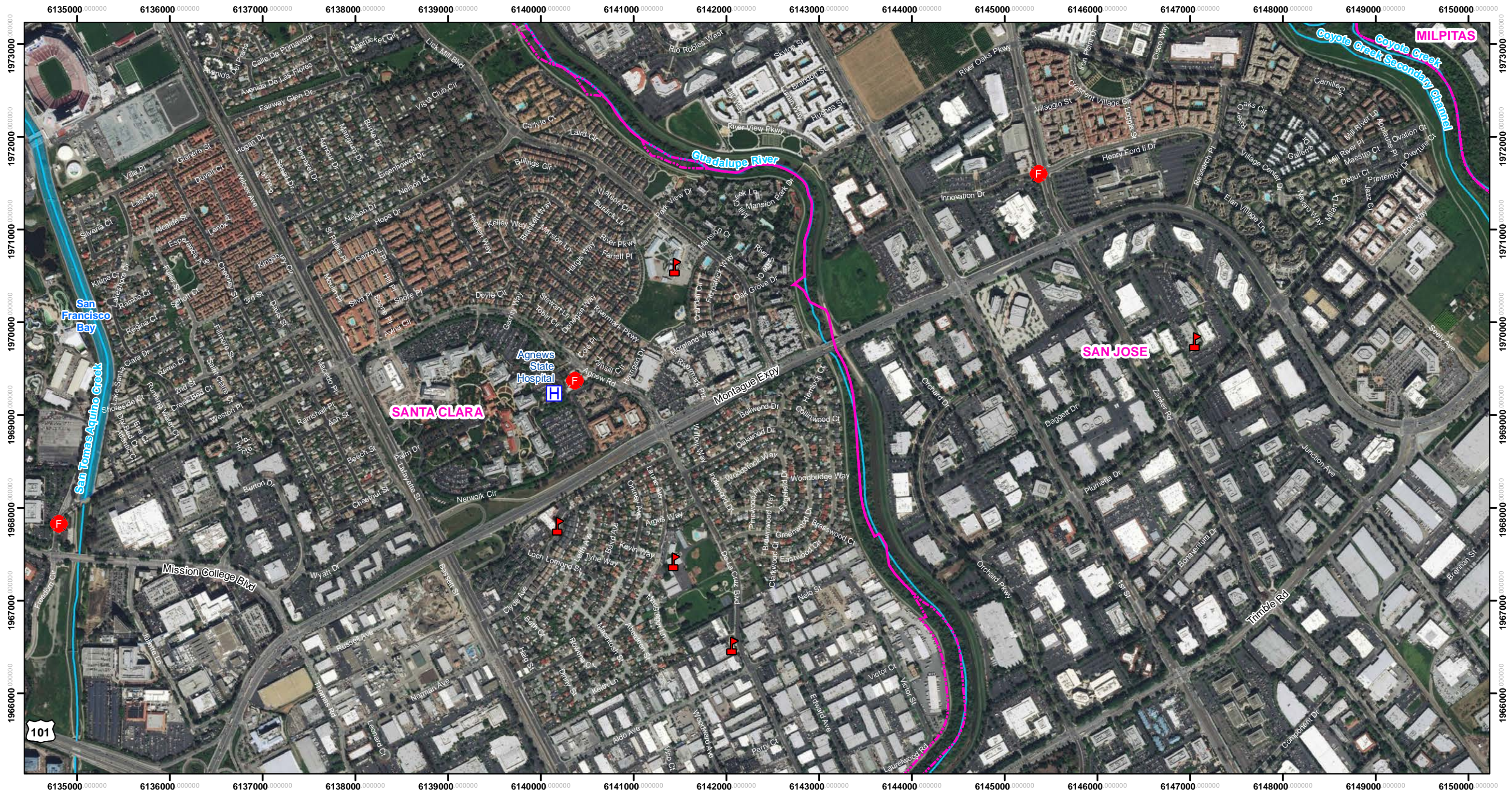
This map meets all applicable state and federal standards and has been prepared in consideration of all potential downstream hazards by a licensed civil engineer.

- Legend**
- Maximum Inundation Depth (feet)
 - <1
 - Flood Wave Arrival Time
 - Cities
 - Dams
 - Schools
 - Fire Stations

Fair Weather (FW) failure assumes a dam failure at full capacity at the spillway lip without any additional inflow



Inundation Map for the Hypothetical Fair Weather Failure of **Guadalupe Dam**
 Federal Dam ID: CA00294 State Dam ID: 72-009
Sheet 13 of 17
 1 in = 1,000 ft
 Dam Owner: Santa Clara Valley Water District
 5750 Almaden Exp
 San Jose CA 95118
 Inundation Analysis and maps created by SCWWD
 August 2019
 © 2019 Santa Clara Valley Water District



Vertical Datum: NAVD88, U.S. Feet

The methods used to develop inundation zones and flood wave arrival times are approximate and should only be used as guidance for establishing evacuation zones. Actual areas inundated will depend on actual failure and pre-failure hydrologic conditions and may differ significantly from information shown on maps.

This map meets all applicable state and federal standards and has been prepared in consideration of all potential downstream hazards by a licensed civil engineer.

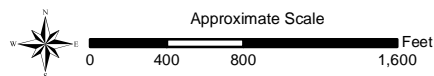
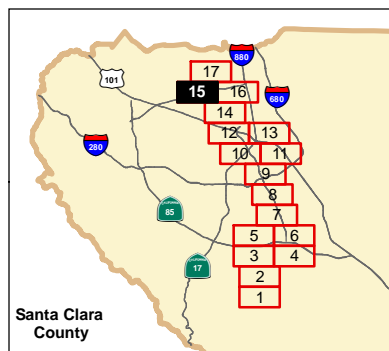
Legend

- Cities
- Schools
- Hospitals
- Fire Stations

Fair Weather (FW) failure assumes a dam failure at full capacity at the spillway lip without any additional inflow



Inundation Map for the Hypothetical Fair Weather Failure of **Guadalupe Dam**
 Federal Dam ID: CA00294 State Dam ID: 72-009
Sheet 14 of 17
 1 in = 1,000 ft
 Dam Owner: Santa Clara Valley Water District
 5750 Almaden Exp
 San Jose CA 95118
 Inundation Analysis and maps created by SCVWD
 August 2019
 © 2019 Santa Clara Valley Water District



Vertical Datum: NAVD88, U.S. Feet

The methods used to develop inundation zones and flood wave arrival times are approximate and should only be used as guidance for establishing evacuation zones. Actual areas inundated will depend on actual failure and pre-failure hydrologic conditions and may differ significantly from information shown on maps.

This map meets all applicable state and federal standards and has been prepared in consideration of all potential downstream hazards by a licensed civil engineer.

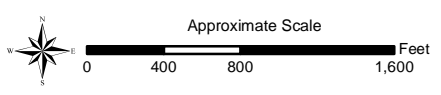
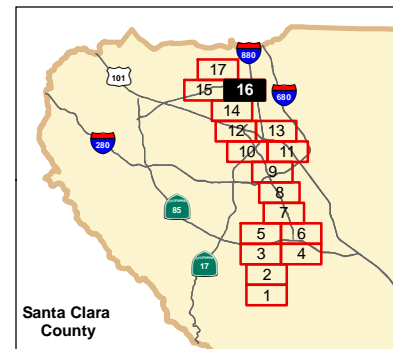
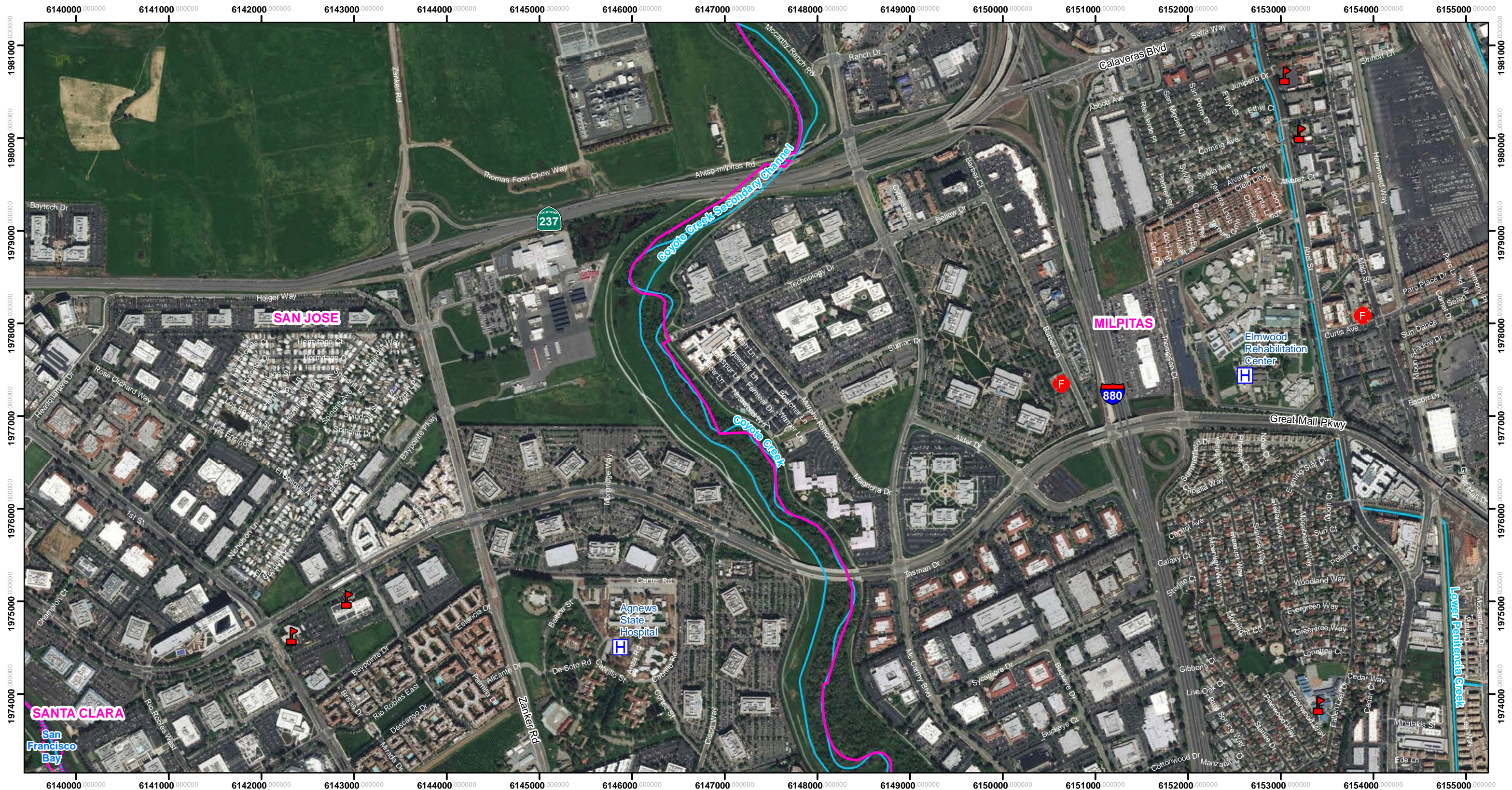
Legend

- Cities
- Schools
- Fire Stations

Fair Weather (FW) failure assumes a dam failure at full capacity at the spillway lip without any additional inflow



Inundation Map for the Hypothetical Fair Weather Failure of **Guadalupe Dam**
 Federal Dam ID: CA00294 State Dam ID: 72-009
Sheet 15 of 17
 1 in = 1,000 ft
 Dam Owner: Santa Clara Valley Water District
 5750 Almaden Exp
 San Jose CA 95118
 Inundation Analysis and maps created by SCVWD
 August 2019
 © 2019 Santa Clara Valley Water District



Vertical Datum: NAVD88, U.S. Feet

The methods used to develop inundation zones and flood wave arrival times are approximate and should only be used as guidance for establishing evacuation zones. Actual areas inundated will depend on actual failure and pre-failure hydrologic conditions and may differ significantly from information shown on maps.

This map meets all applicable state and federal standards and has been prepared in consideration of all potential downstream hazards by a licensed civil engineer.

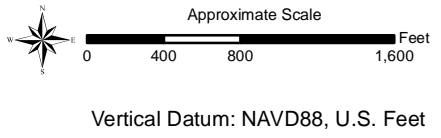
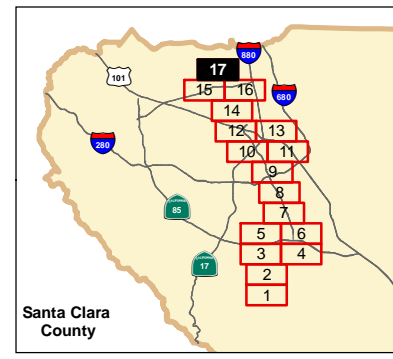
Legend

- Cities
- Schools
- Hospitals
- Fire Stations

Fair Weather (FW) failure assumes a dam failure at full capacity at the spillway lip without any additional inflow



Inundation Map for the Hypothetical Fair Weather Failure of **Guadalupe Dam**
 Federal Dam ID: CA00294 State Dam ID: 72-009
Sheet 16 of 17
 1 in = 1,000 ft
 Dam Owner: Santa Clara Valley Water District
 5750 Almaden Exp
 San Jose CA 95118
 Inundation Analysis and maps created by SCWWD
 August 2019
 © 2019 Santa Clara Valley Water District



The methods used to develop inundation zones and flood wave arrival times are approximate and should only be used as guidance for establishing evacuation zones. Actual areas inundated will depend on actual failure and pre-failure hydrologic conditions and may differ significantly from information shown on maps.

This map meets all applicable state and federal standards and has been prepared in consideration of all potential downstream hazards by a licensed civil engineer.

- Legend**
- Cities
 - Fire Stations

Fair Weather (FW) failure assumes a dam failure at full capacity at the spillway lip without any additional inflow



Inundation Map for the Hypothetical Fair Weather Failure of **Guadalupe Dam**
 Federal Dam ID: CA00294 State Dam ID: 72-009
Sheet 17 of 17
 1 in = 1,000 ft
 Dam Owner:
 Santa Clara Valley Water District
 5750 Almaden Exp
 San Jose CA 95118
 Inundation Analysis and maps created by SCVWD
 August 2019
 © 2019 Santa Clara Valley Water District