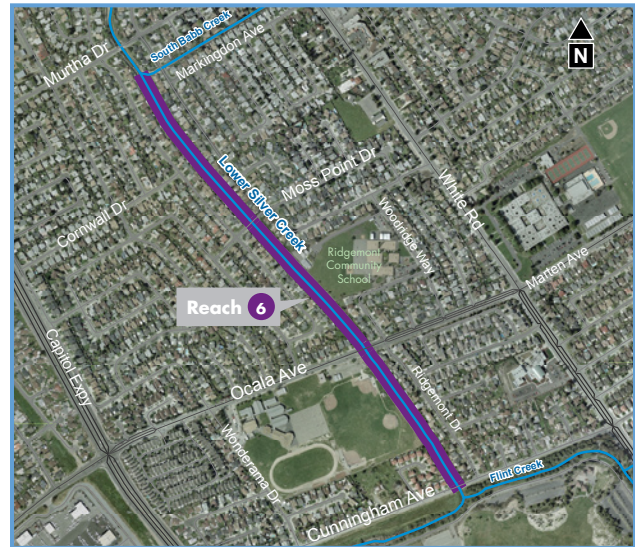
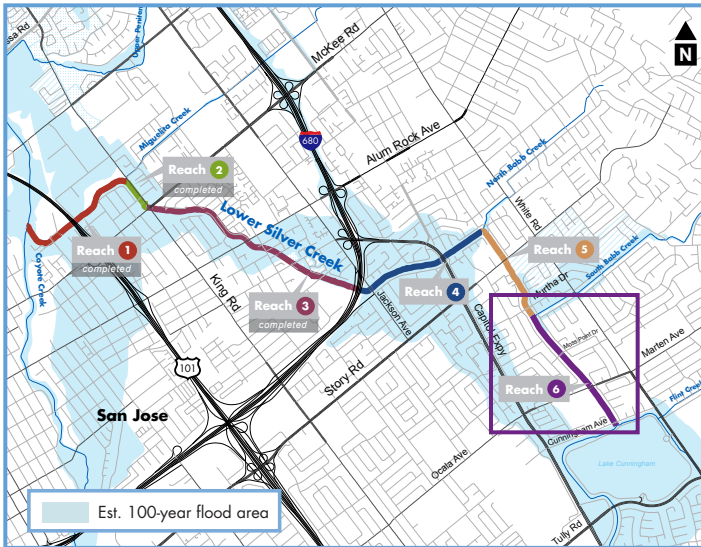


Reach 6 South Babb Creek to Cunningham Ave



Reach 6 shown above and at right extends between South Babb Creek and Cunningham Avenue

Objectives

- Provide flood protection from a 100-year flood event
- Mitigate for all project impacts to stream habitat values and fisheries
- Identify stream habitat enhancement and/or restoration opportunities
- Identify opportunities to provide for public recreation and access
- Minimize the need for future operations and maintenance activities and create a self-sustaining system within the completed project limits

Features

- Future flood protection up to 100-year flood event
- Pedestrian crossings
- Enhanced vegetation plantings
- Improved maintenance access
- Enhanced wetland habitat
- Creek bank stabilization
- Hydro-seeding to re-establish native grasses to minimize bank erosion
- Streamside riparian vegetation

Project information

The Santa Clara Valley Water District is working on a multi-purpose project along Lower Silver Creek to protect nearly 3,800 homes and businesses along the creek from a 100-year flood event. The Lower Silver Creek flood protection project stretches from Coyote Creek to Cunningham Avenue. Over the past 50 years, Lower Silver Creek has experienced severe flooding that resulted in damage to residential, commercial and industrial properties.

Reach 6 begins at the confluence with South Babb Creek and extends approximately 0.8 miles to Cunningham Avenue. The water district, in partnership with the Natural Resources Conservation Service, is performing additional engineering evaluation to further enhance the existing design along Reach 6.

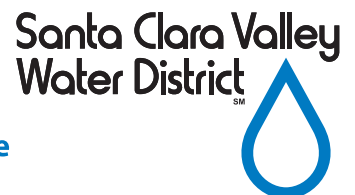
A section of this reach, from Moss Point Drive to Cunningham Avenue, is ready to begin the first phase of construction in August 2009. The construction activities include grading slopes and hydro-seeding native grasses to minimize bank erosions, which the water district anticipates to complete by mid-October 2009. The design for the entire reach would be finalized by summer 2010, with construction to begin shortly after.

continued on back...

Reach 6 Lower Silver Creek flood protection project



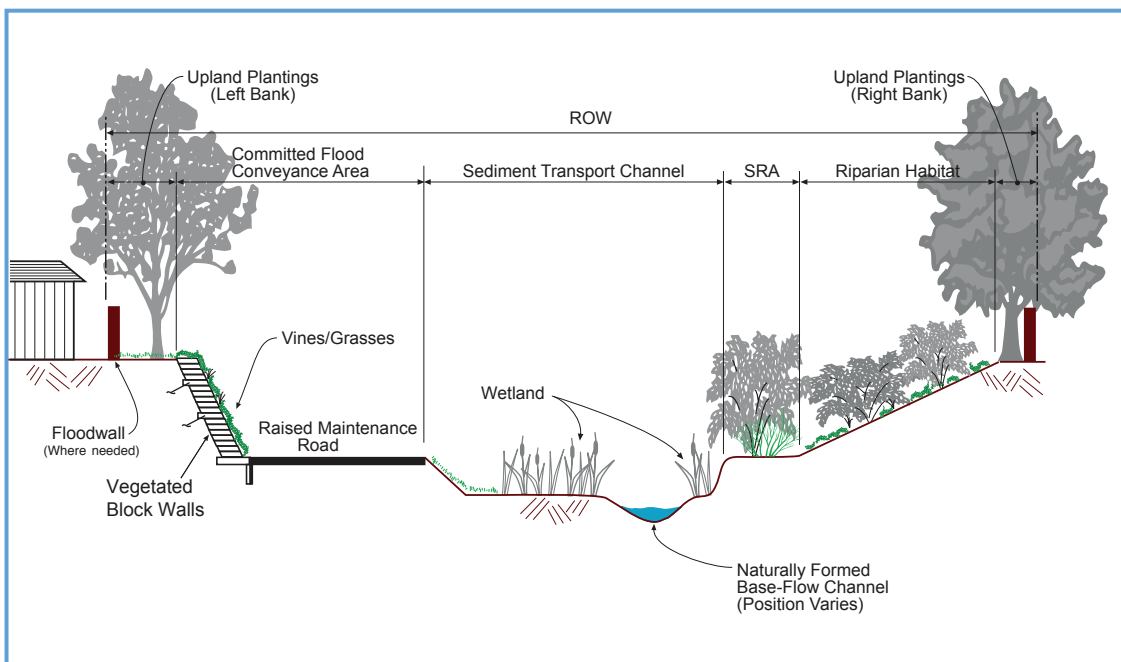
United States Department of Agriculture
Natural Resources Conservation Service



Reach 6 South Babb Creek to Cunningham Avenue



Existing: Looking upstream from Ocala Avenue; limited carrying capacity and noticeable bank erosion.



Existing proposal: Cross-section showing increased carrying capacity, enhanced habitat along the creek, and improved maintenance access.