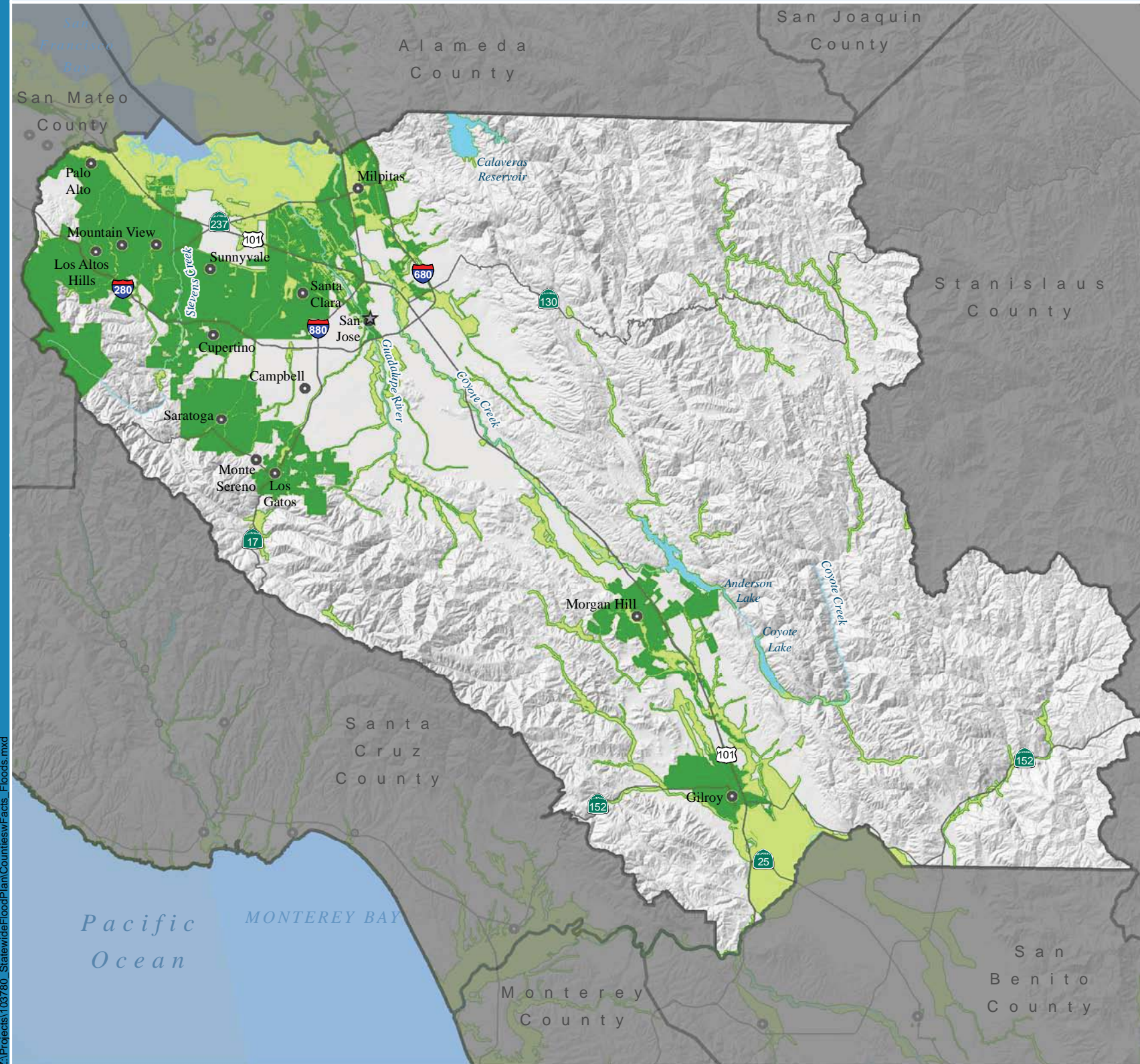


100-year and 500-year Floodplains



- City
- Populated Place
- Highway
- Major River
- 100-yr Floodplain
- 500-yr Floodplain
- Major Water Body
- County

Selected Flood Events by Event Year

- 1861-1862** Winter, The Great Flood, Guadalupe River
- 1955-1956** December-January, 1955 Christmas Flood, Coyote Creek, Stevens, Matadero, San Francisquito, Guadalupe River
- 1958** February-April, Penitencia, Guadalupe, San Tomas Aquinas, Stevens, Permanente, Matadero, San Francisquito
- 1962** October, Countywide
- 1968-1969** December-January, Winter '69 Storms, Salinas River, San Lorenzo River, Guadalupe River, Pajaro River
- 1982-1983** November-March, Winter Storms, Coyote Creek, Guadalupe River, Penitencia Creek, Calabazas Creek, Los Gatos Creek
- 1986** February 12-20, St. Valentine's Day Storm, Guadalupe River
- 1987** Coyote Creek
- 1988** February, Coyote Creek, San Francisquito Creek
- 1995** January-March, 1995 Christmas Flood, Guadalupe River, Los Gatos Creek, Llagas Creek, Upper Penitencia Creek, Coyote Creek, Pacheco Creek
- 1998** January-March, Calabazas Creek, Guadalupe River, Coyote Creek, Upper Penitencia Creek, Saratoga Creek, San Francisquito Creek, Matadero Creek
- 2000** Coyote Creek
- 2002** Guadalupe River
- 2005** December, Coyote Creek

Flood Hazard Exposure

County Statistics

Total Acreage:	835,231
Total Population:	1.7 million
Total Structures:	488,100
Total Value of Structures and Contents:	\$185.7 billion
Total Agricultural Acreage:	71,313
Total Value of Crops:	\$127.1 million

Summary of Exposure to Flood Hazard Reported by County

	100-yr Event	500-yr Event
Exposed Area (acres):	60,869	145,236
Percent of Area Exposed:	7	17
Population Exposed:	132,577	664,061
Percent of Population Exposed:	8	39
Structures Exposed:	37,069	201,571
Total Depreciated Replacement Value of Exposed Structures and Contents:	\$15.2 billion	\$84.3 billion
Exposed Crops (acres):	20,072	32,232
Value of Exposed Crops:	\$50.5 million	\$68.4 million
Department of Defense Facilities Exposed:	1	1
Essential Facilities Exposed:	49	287
High Potential Loss Facilities Exposed:	42	139
Lifeline Utilities Exposed:	9	14
Transportation Facilities Exposed:	210	536
Transportation Segments Exposed (miles):	134	394
Native American Tribal Land Exposed (acres):	0	0
Total Sensitive Plant Species Exposed:	38	40
Total Sensitive Animal Species Exposed:	40	42

Santa Clara County

Types of Flooding

- | | |
|----------------|------------------------------|
| Likely: | Present: |
| Slow Rise | Engineered Structure Failure |
| Flash | |
| Debris Flow | |
| Stormwater | |

Hydrologic Regions

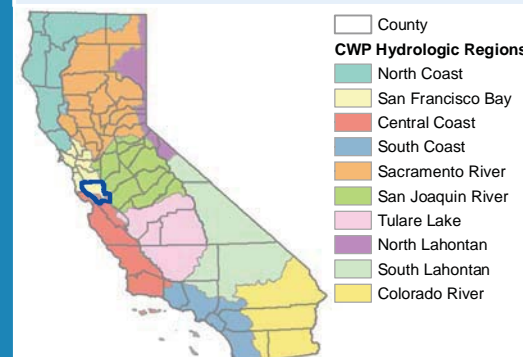


Figure D-85
Summary of Available Flood Types, Flood History, and Flood Hazard Exposure, Santa Clara County

DRAFT

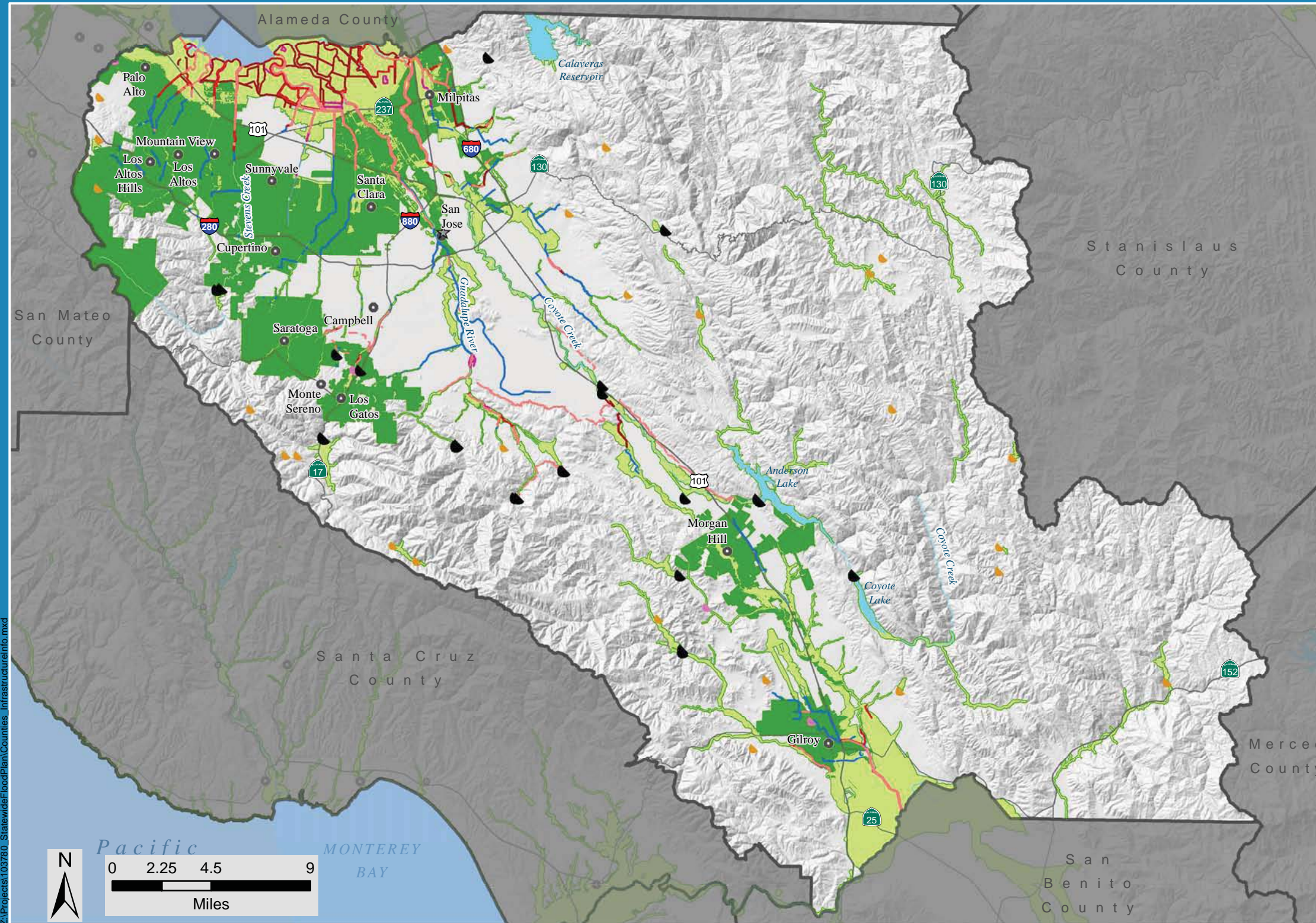
Mar 22, 2013



DISCLAIMER: The DWR did not develop all the displayed floodplain extents and cannot guarantee their accuracy.

Summary of Available Flood Infrastructure Information

Santa Clara County



Flood Infrastructure GIS Data Received from Agencies Contacted:

- Dam
- Levee or Maintenance Road

Non-GIS, PDF/Hard Copy Flood Infrastructure Data Received from Agencies Contacted (Not Shown On Map):

No PDF/Hard Copy Data Received

Agencies Contacted as Part of SFMP:

Santa Clara Valley Water District
San Francisquito Creek Joint Powers Authority

Planned Projects:

Number of Local Projects:	23
Estimated Cost of Local Projects:	\$362.9 million
Number of USACE Projects:	6
Estimated Cost of USACE Projects:	\$1 billion

Statewide GIS Data Sources:

Cities derived from CAL FIRE incorporated city limit polygons, 2010. Populated Places from GNIS, 2011. Counties from CalAtlas, 2009. Dams modified from DWR, Bulletin 17-00, 2000. CLD layers are from California Levee Database, v2.2 r2, 2010. NFHL layers are from the National Flood Hazard Layer, FEMA, August 2011. Highways from TeleAtlas, 2004. Rivers and Lakes modified from DFG, N/A. Floodplains compiled for SFMP, 2011. All other Flood Infrastructure GIS data, noted above, received from Agencies Contacted.

Santa Clara County

Figure D-86
Summary of Available Flood Infrastructure Information, Santa Clara County

DRAFT Mar 22, 2013

US Army Corps of Engineers

STATE OF CALIFORNIA
DEPARTMENT OF WATER RESOURCES

STATEWIDE FLOOD MANAGEMENT PLANNING PROGRAM

- | | | | | | | |
|----------------------------|----------------------|------------------------|----------------------------|------------------------|------------------|-------------------|
| Statewide GIS Data: | DWR Local Agency Dam | CLD Pump Station | NFHL Levee | NFHL Control Structure | Highway | 100-yr Floodplain |
| City | DWR Other Dam | CLD Local Agency Levee | NFHL Flood Event Structure | NFHL Dike | Major River | 500-yr Floodplain |
| Populated Place | NFHL Dam or Weir | CLD Other Levee | NFHL Channel | NFHL Retaining Wall | Major Water Body | County |

DISCLAIMER: 1) Information displayed on the map does not represent all existing flood infrastructure in the county. Only infrastructure available as "Statewide GIS Data" or submitted in a GIS format by one of the interviewed agencies is shown. 2) The DWR did not develop all the displayed floodplain extents and cannot guarantee their accuracy.