

# Welcome to the 2020 Landscape Summit



**Valley Water**

Clean Water • Healthy Environment • Flood Protection

# AGENDA

- Landscape Summit Dedication in Remembrance of Sherri Osaka
- Welcome from Valley Water Board of Director Richard Santos
- State of the Valley's Water – Nina Hawk, Chief Operations Officer
- Presentation: Climate Reality, Regeneration of the Landscape
- Break – Opportunity to Network
- Presentation: Climate Positive Design
- Closing Remarks
- Lunch

## Landscape Summit Dedication in Remembrance of Sherri Osaka



# Welcome to the 5<sup>th</sup> Annual Landscape Summit

Santa Clara Valley Water District  
Board of Director  
**Director Richard Santos**



**Valley Water**

Clean Water • Healthy Environment • Flood Protection



# Valley Water

Clean Water • Healthy Environment • Flood Protection



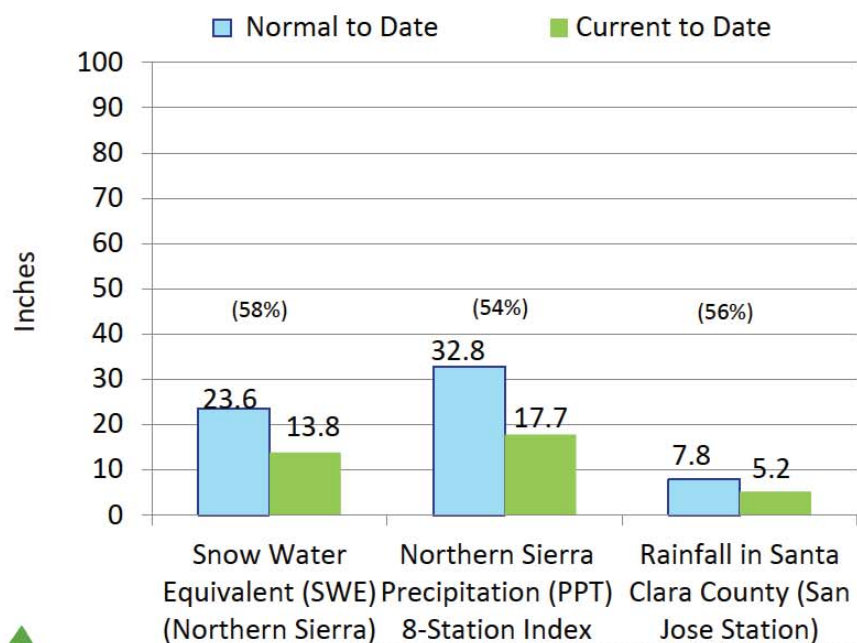
# State of the Valley's Water

Presented by: **Nina Hawk, Chief Operation Officer**  
**Water Utility - Santa Clara Valley Water District**

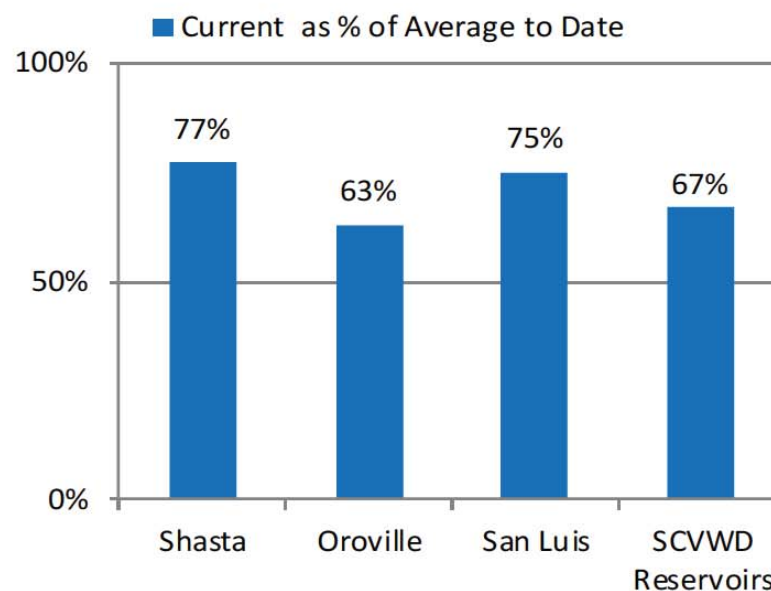
# 2019/20 Hydrologic and Reservoir Conditions

## HYDROLOGIC CONDITIONS ABOVE AVERAGE

Hydrology  
As of February 2020



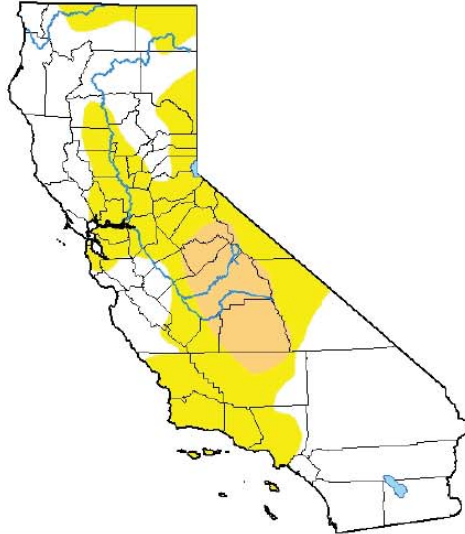
Reservoir Storage  
As of February 2020



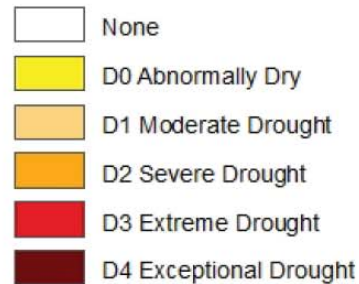
# 2020 Initial Local Outlook

U.S. Drought Monitor  
California

February 11, 2020  
(Released Thursday, Feb. 13, 2020)  
Valid 7 a.m. EST



## Intensity:



Author:  
Richard Tinker  
CPC/NOAA/NWS/NCEP



droughtmonitor.unl.edu

Projected  
2020 EOY  
Storage

Normal (Stage 1)  
No water use reductions

Alert (Stage 2)  
0-10% reductions

Severe (Stage 3)  
10% -20% reductions

Critical (Stage 4)  
20% -40% reductions

Emergency (Stage 5)  
40% -50% reductions

Water Shortage  
Contingency  
Plan Stages

Above 300,000 AF

250,000 – 300,000 AF

200,000 – 250,000 AF

150,000 – 200,000 AF

Below 150,000 AF

End of Year (EOY)  
Groundwater Storage

- |          |                                   |
|----------|-----------------------------------|
| 15%      | - Current SWP Allocation (35 TAF) |
| 65%      | - Initial CVP Allocation          |
| ~350 TAF | - Semitropic Storage              |
| ~360 TAF | - End of 2019 Groundwater Storage |

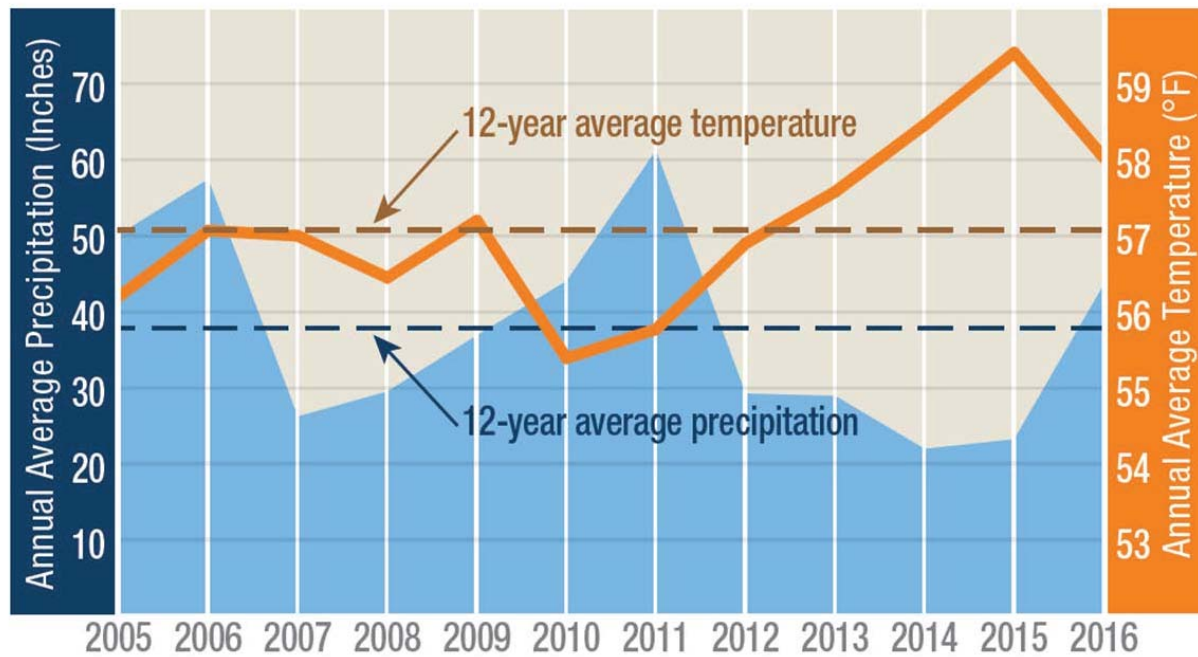


# 2019 Retail Water Use and Reductions

**THE COMMUNITY HAS MET THE CALL FOR 20%!**

<u>2019</u>	<u>North County Ground water</u>	<u>South County Ground water</u>	<u>Treated Water</u>	SFPUC	SJWC Surface	<u>2019 Monthly Use</u>	<u>2019 Cumulative Use</u>
Jan	3,175	1,215	5,783	2,577	995	13,745	13,745
Feb	2,274	1,102	4,770	2,368	1,656	12,171	25,916
Mar	2,527	1,209	4,573	3,158	2,190	13,657	39,573
Apr	3,754	1,455	6,189	3,758	2,236	17,392	56,965
May	3,309	1,779	9,462	5,038	1,895	21,483	78,448
Jun	4,802	1,981	11,167	4,957	1,655	24,562	103,010
Jul	5,508	2,254	12,142	5,146	1,643.1	26,692	129,702
Aug	5,316	2,275	12,518	5,169	1,761.9	27,040	156,743
Sep	5,432	2,066	11,814	4,428	799.4	24,539	181,282
Oct	5,584	1,984	10,595	4,395	621.1	23,180	204,462
Nov	4,852	1,649	7,902	3,923	567.6	18,893	223,355
Dec	3,519	1,199	5,284	3,088	601	13,692	237,047
Jan to Current Totals	50,052	20,168	102,197	48,007	16,622	237,047	
%Savings by Source of Supply	42%	13%	20%	12%	-114%	21%	

# California's Historic 5 Year Drought



California has experienced near-record temperatures in recent years.  
Source: California Department of Water Resources

## SCVWD Board of Directors Response

- June 13, 2017, the board extended the call for 20% reductions, but removed recommendations for mandatory actions by retailers and municipalities. They also recommended that many water waste restrictions be permanent and called for making water conservation a way of life. Please continue to make conservation a way of life.

# State Transitions to Conservation as a Way of Life

Governor Executive Order

State Board **transitions away from monthly and annual percent reductions**

**Move towards water use efficiency and water budgeting targets** after 2020- performance based targets will be in place.



Making Water Conservation a California Way of Life

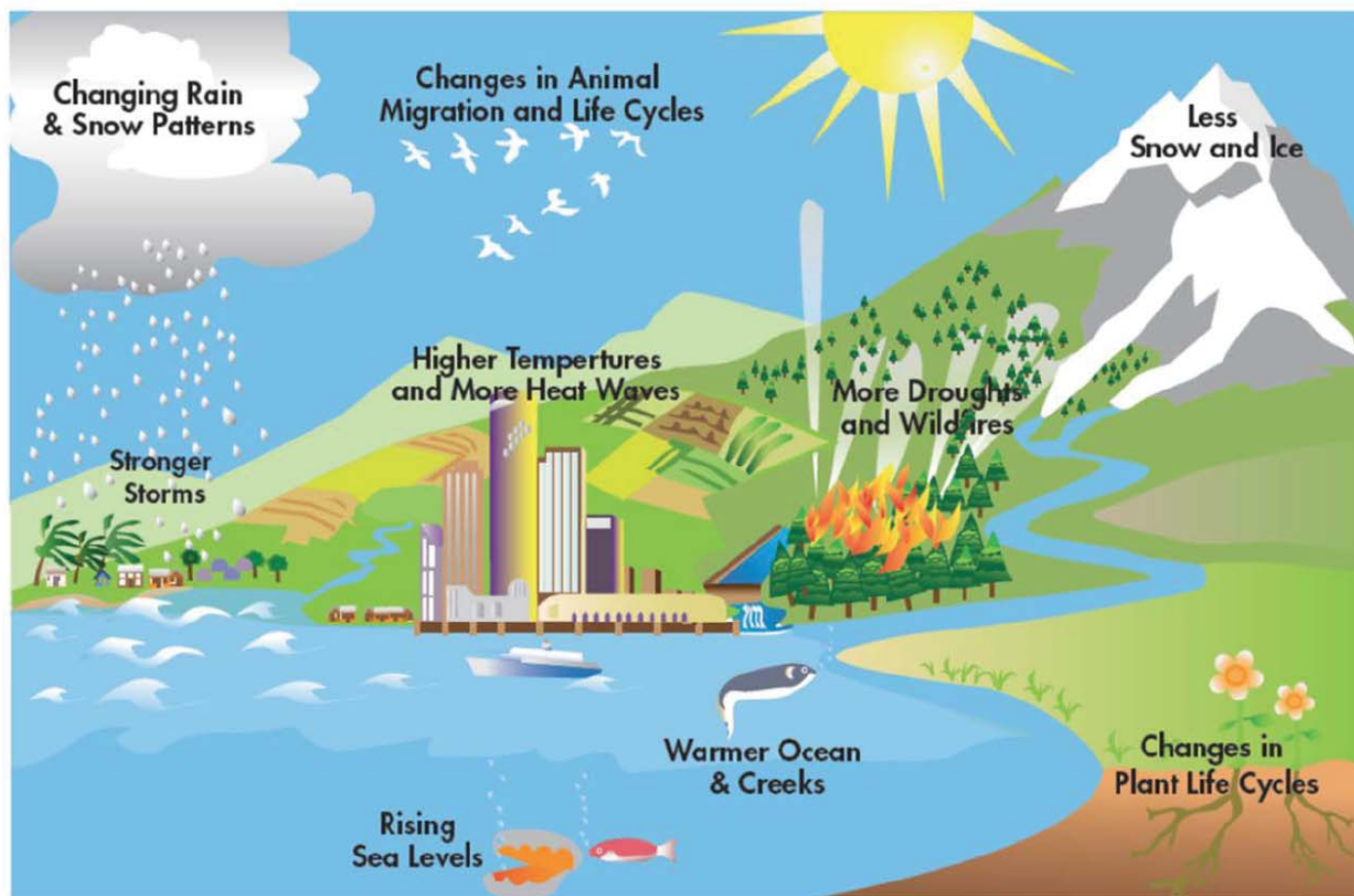
Implementing Executive Order B-37-16

FINAL REPORT  
April 2017





# Climate Change Impacts





# Climate Change: California Impacts



## CLIMATE CHANGE ACTION PLAN

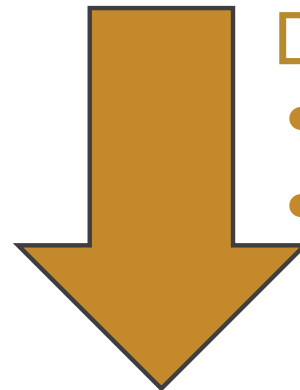


..a district-wide,  
comprehensive  
framework to:



### INCREASE:

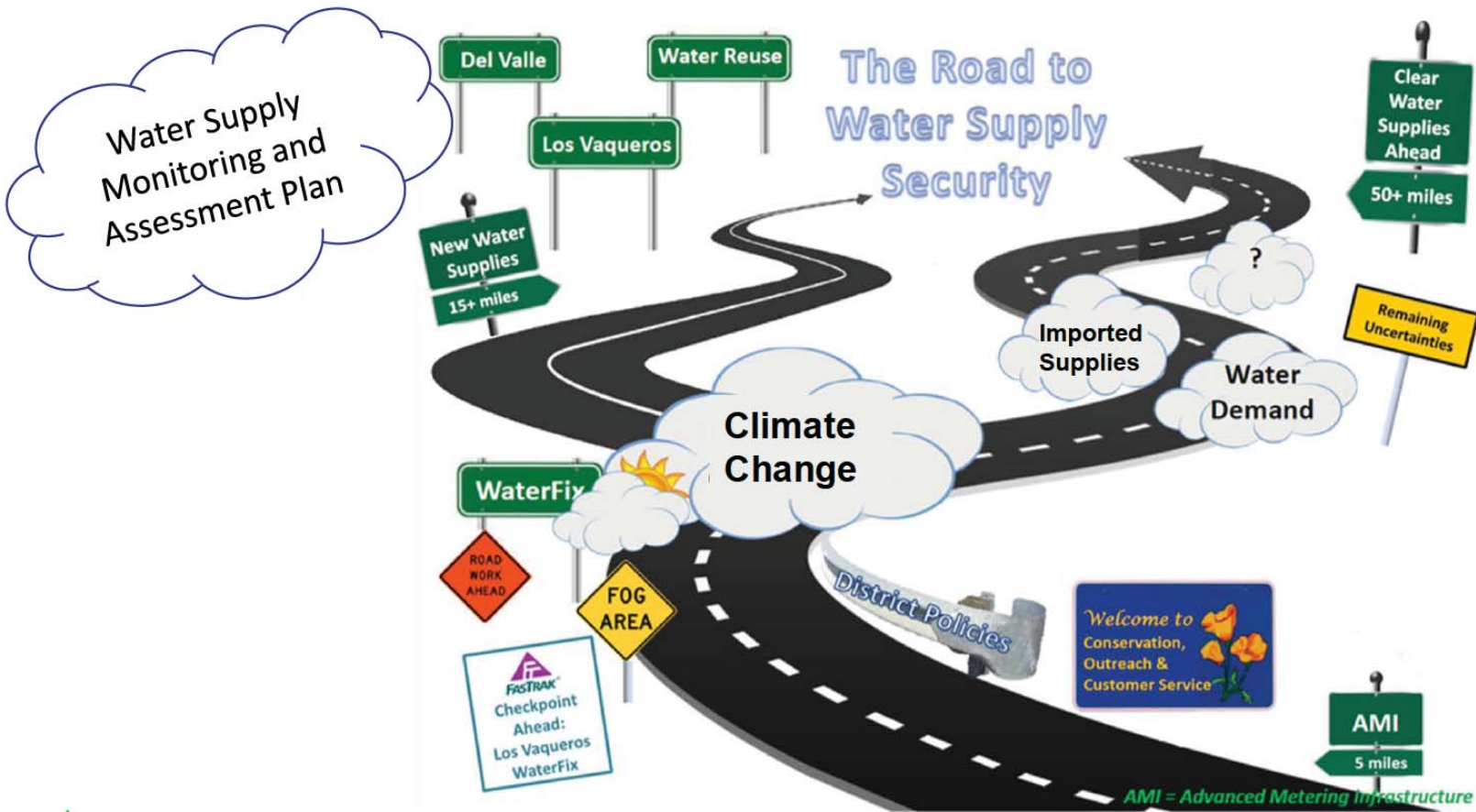
- Resiliency
- Adaptability



### DECREASE:

- Risk
- Greenhouse  
Gas Emissions

# Climate Change: Water Supply Master Planning



# Since the 2019 Summit...

- Landscape Rebate Program Improvements:
  - Commercial/Multi-family cap increase to \$50,000
- Water Wise Video Series
  - Rain Garden Installation
  - CA Native Lawn Conversion Project
  - More to come!
- Greywater Direct Installation Program
  - 60 new system installations for low income, senior, disabled, or US Veteran customers





# Since the 2019 Summit...

## ➤ BayQWEL Training

- Spanish training on March 9, 16, 23, and 30th
- English training coming soon
- Visit [qwel.net](http://qwel.net) for more classes throughout the Bay Area

## ➤ South Bay Green Gardens:

- Addition of Partnering with Insects page



**BE WATER EFFICIENT**

**FREE CLASS FOR LANDSCAPE PROFESSIONALS**

*Sponsored by Valley Water and Bay Area Water Supply & Conservation Agency*

**QWEL workshop in Spanish**  
Includes irrigation audit & exam

*Choose the session that works best for you:*

### **San Jose**

4 consecutive Mondays

March 9, 16, 23: 7:30 a.m. – 2:00 p.m.  
March 30: 7:30 – 11:00 a.m. (examen)

**Environmental Innovation Center**  
1508 Las Plumas Ave.  
San Jose, CA 95133

Register: [qwel.net/pub/class/160](http://qwel.net/pub/class/160)

### **Redwood City**

4 alternating Wed. & Thu.

April 1, 9, 15: 8:00 a.m. – 2:30 p.m.  
April 23: 8:00 – 11:30 a.m. (examen)

**Redwood City Public Works**  
1400 Broadway  
Redwood City, CA 94063

Register: [qwel.net/pub/class/155](http://qwel.net/pub/class/155)

**Space is limited. Register today!**





# QUESTIONS?





# Valley Water

Clean Water • Healthy Environment • Flood Protection