



Valley Water

Clean Water • Healthy Environment • Flood Protection

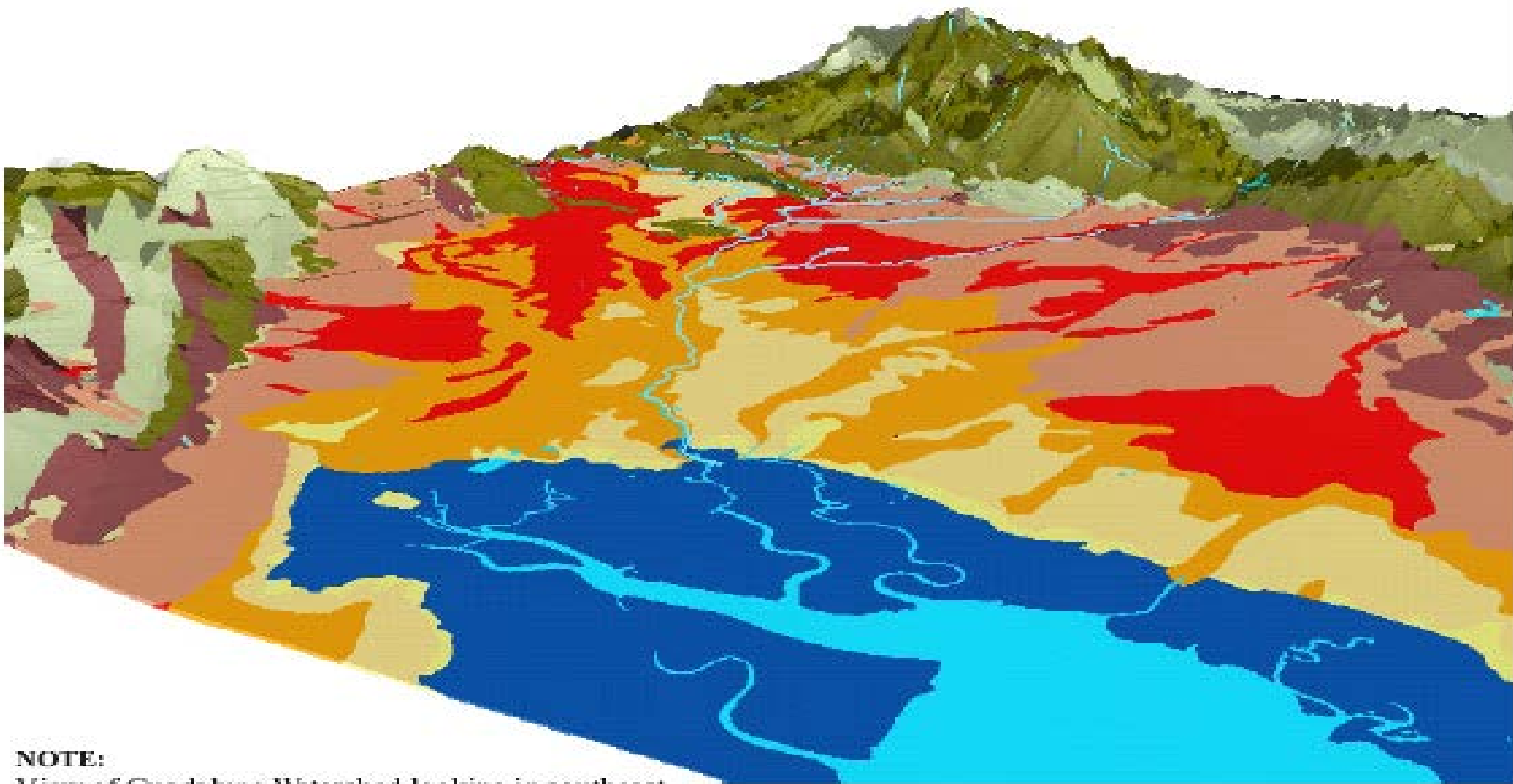
Guadalupe River Park and Flood Protection Project

US Army Corps of Engineers
San Jose Redevelopment Agency
City Of San Jose
Santa Clara Valley Water District

Guadalupe River Park and Flood Protection Project Costs

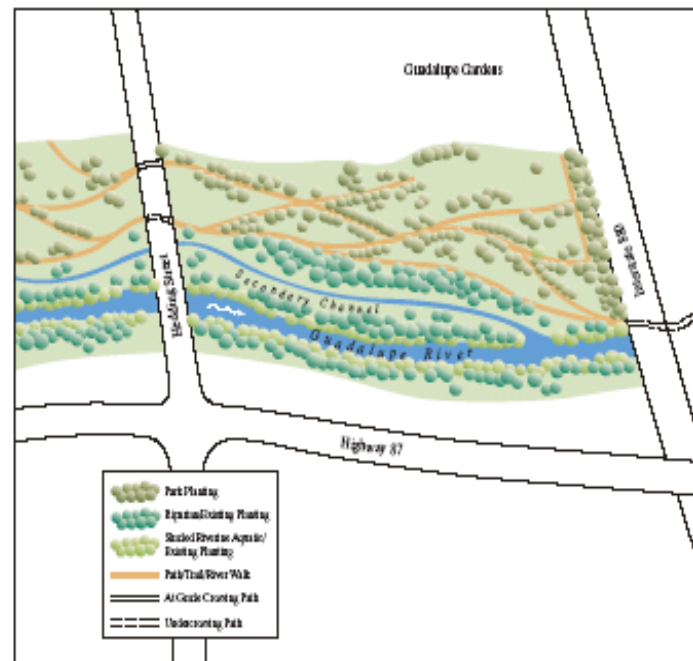
- \$340 Million
 - \$241 Million for Flood Protection
 - \$146 Million - U.S. Army Corps of Engineers
 - \$65 Million - Santa Clara Valley Water District
 - \$40 Million – State of CA Contributions
 - \$99 Million for Recreation
 - \$77 Million – The Redevelopment Agency of San Jose for land acquisition and to develop recreation features, including Sister City Gardens, memorials, and monuments
 - \$20 Million – County of Santa Clara for land acquisition for the park
 - \$2 Million – California Coastal Conservancy

The Guadalupe Watershed



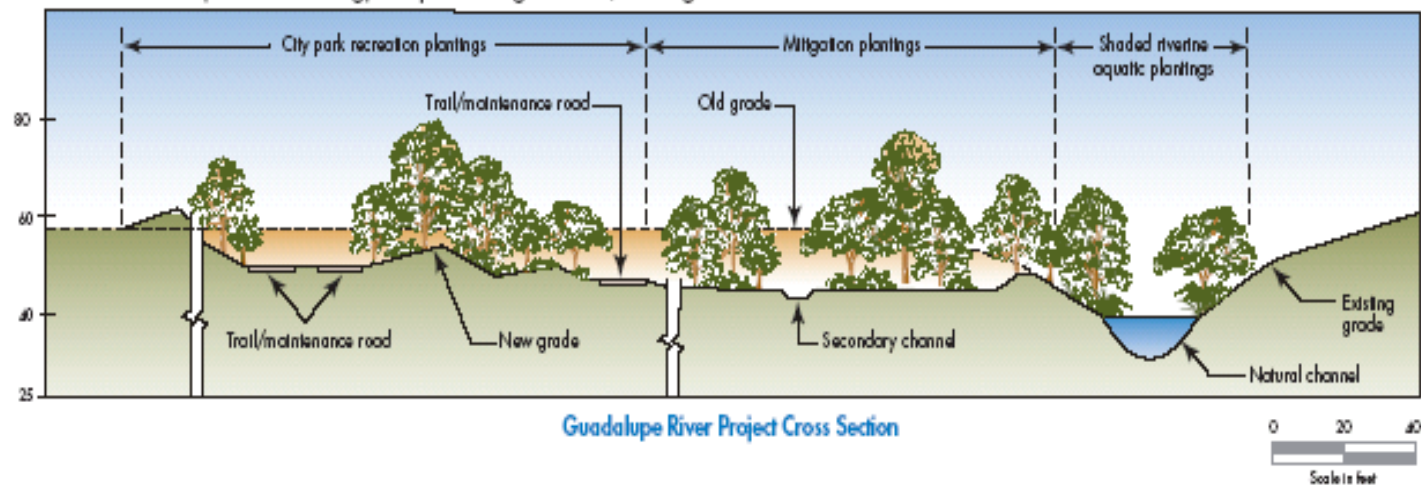
NOTE:

View of Guadalupe Watershed looking in southeast direction. See Figure 1 for legend. Not to scale.



← **Reach 1** →
(Highway 880 to Hedding Street)

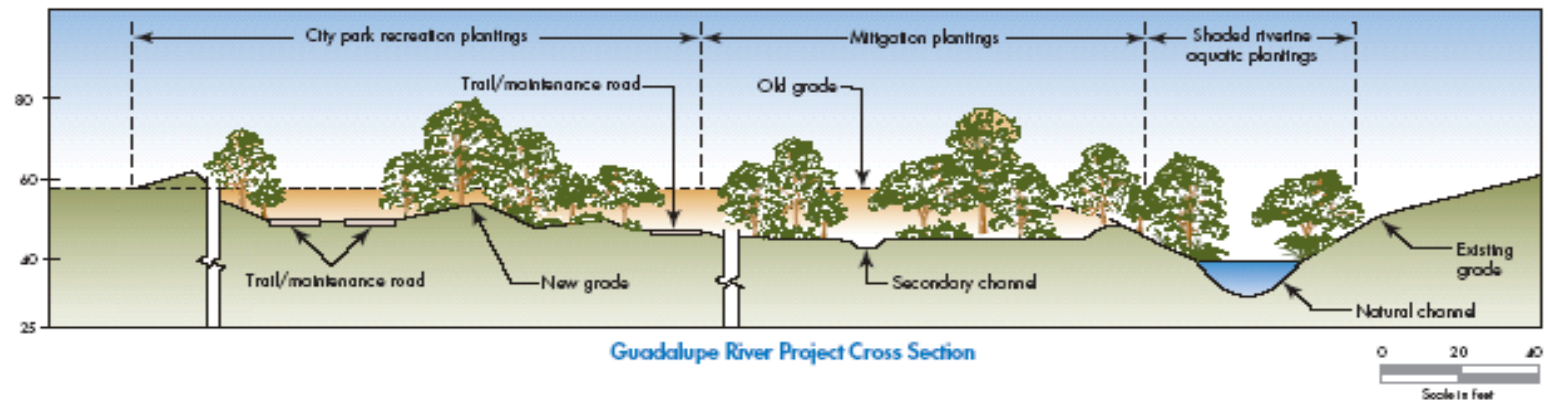
Reach 1 (880 to Hedding) completed August 1994, looking downstream

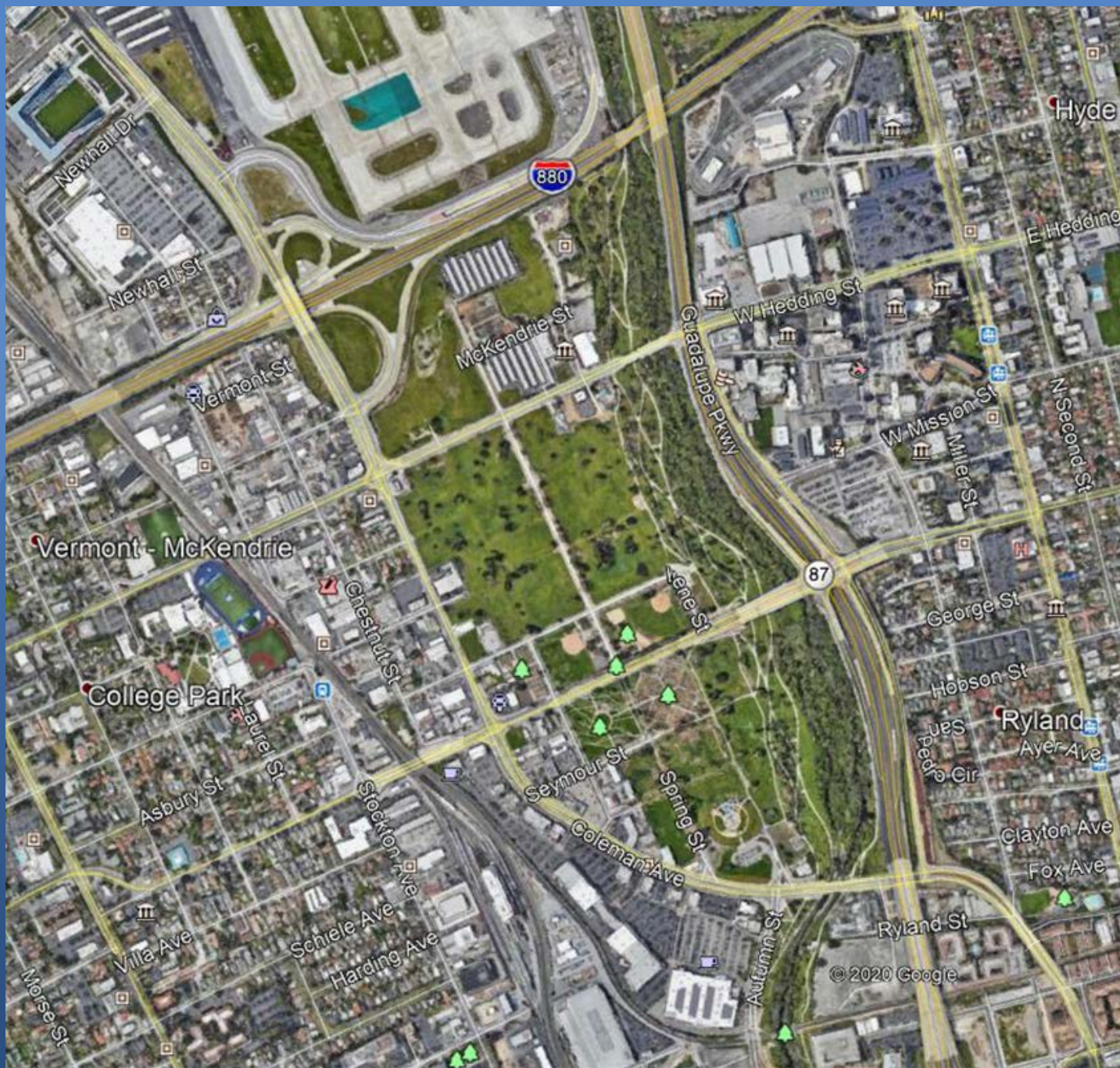


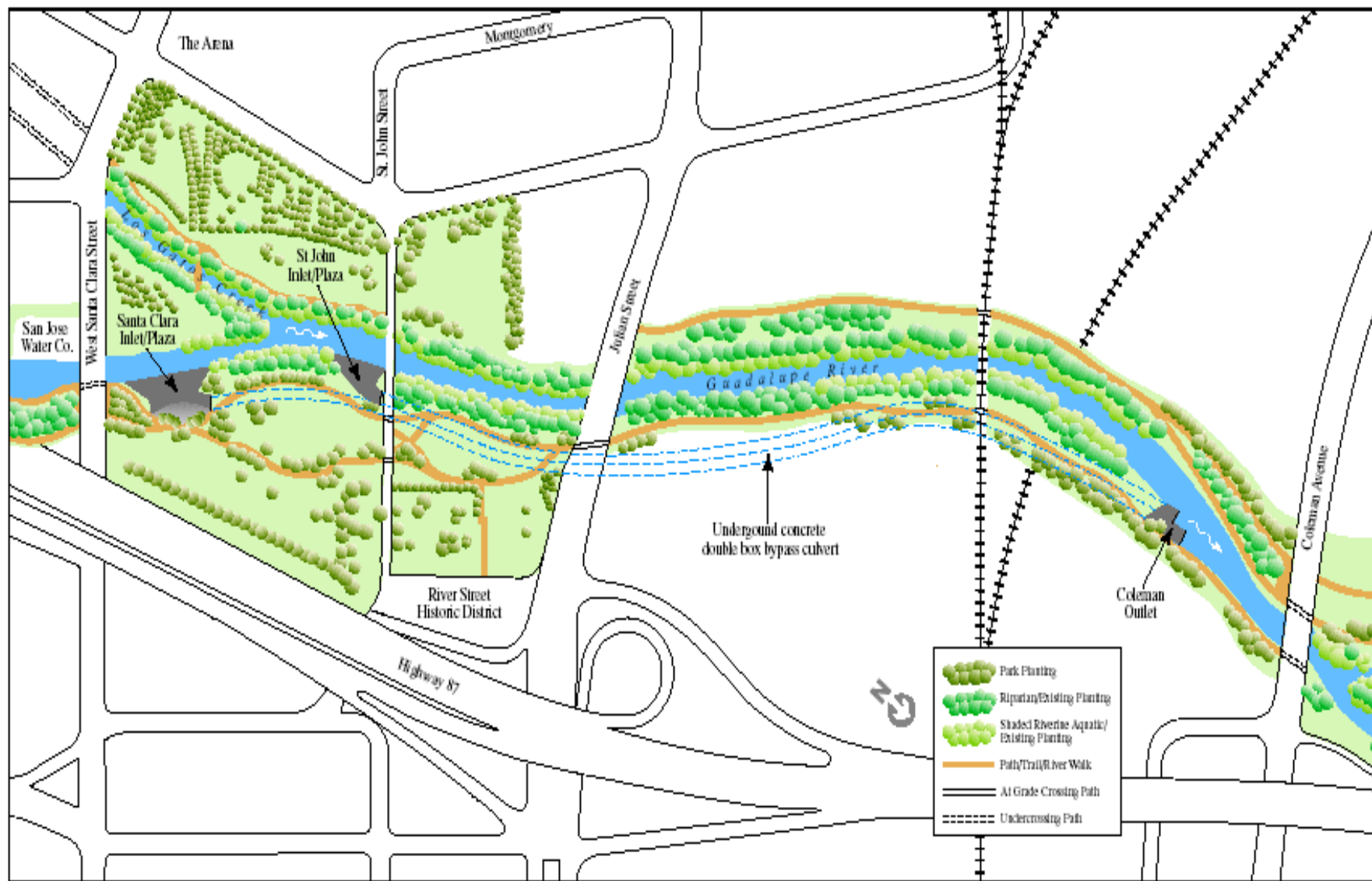


Reach 2
(Hedding Street to Coleman Avenue)

Reach 2 (Hedding to Coleman) completed September 1996, looking downstream







Reach 3A

(Coleman Avenue to West Santa Clara Street)

Contract 3A: Coleman Avenue Looking Upstream



Contract 3A: Coleman Avenue Looking East at PG&E Substation



Contract 3A: Coleman Avenue Looking Upstream at Outlet Structure



Contract 3A: Coleman Avenue Looking Upstream at Outlet Structure



Contract 3A: Looking Downstream from Sobrato Parking Garage



Contract 3A: Union Pacific Railroad (UPRR) Active Bridge #4



Contract 3A: Looking Downstream from Sobrato Parking Garage



Contract 3A: UPRR Temporary Steel Bridge at Bridge #4



Contract 3A: UPRR Temporary Steel Bridge Installed at Bridge #4



Contract 3A: UPRR Temporary Steel Bridge Installed at Bridge #4



Contract 3A: Old Julian Street Looking Downstream



Contract 3A: Old Julian Street Looking Upstream



Contract 3A: St. John Street Looking Downstream



Contract 3A: St. John Street Looking Upstream



Contract 3A: St. John Street Looking Upstream – USGS Weir Pre-Project



Contract 3A: St. John Street Looking Upstream – USGS Weir



Contract 3A: St. John Street Looking Upstream – USGS Weir

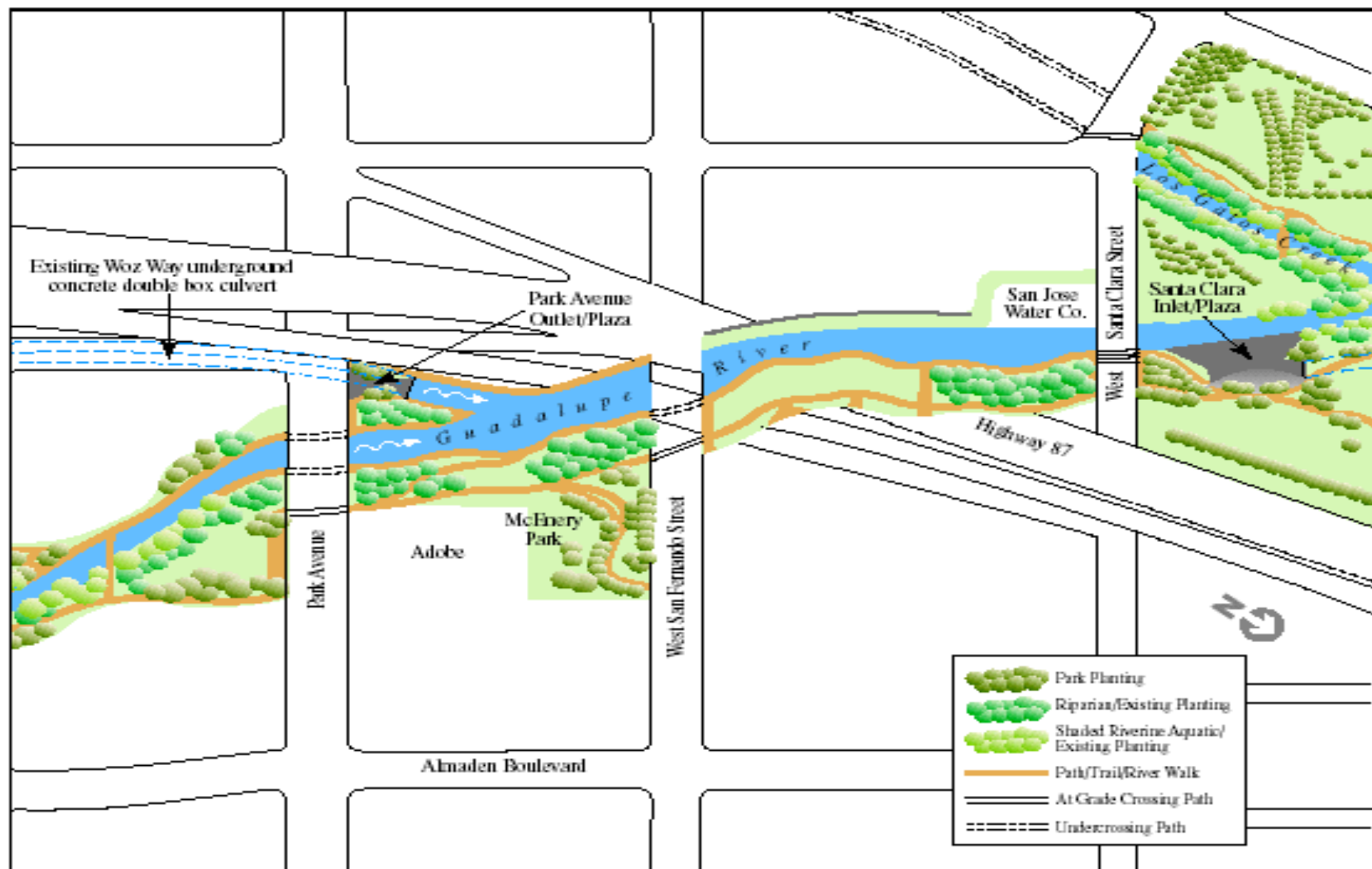


Contract 3A: Santa Clara St. Looking Downstream Pre-Project



Contract 3A: Looking Downstream To Santa Clara Inlet/Street





← **Reach 3B** →
(West Santa Clara Street to Park Avenue)

Contract 3B: Santa Clara Street Looking Upstream Pre-Project



Contract 3B: Santa Clara Street Looking Upstream



Contract 3B: Santa Clara Street Looking Upstream

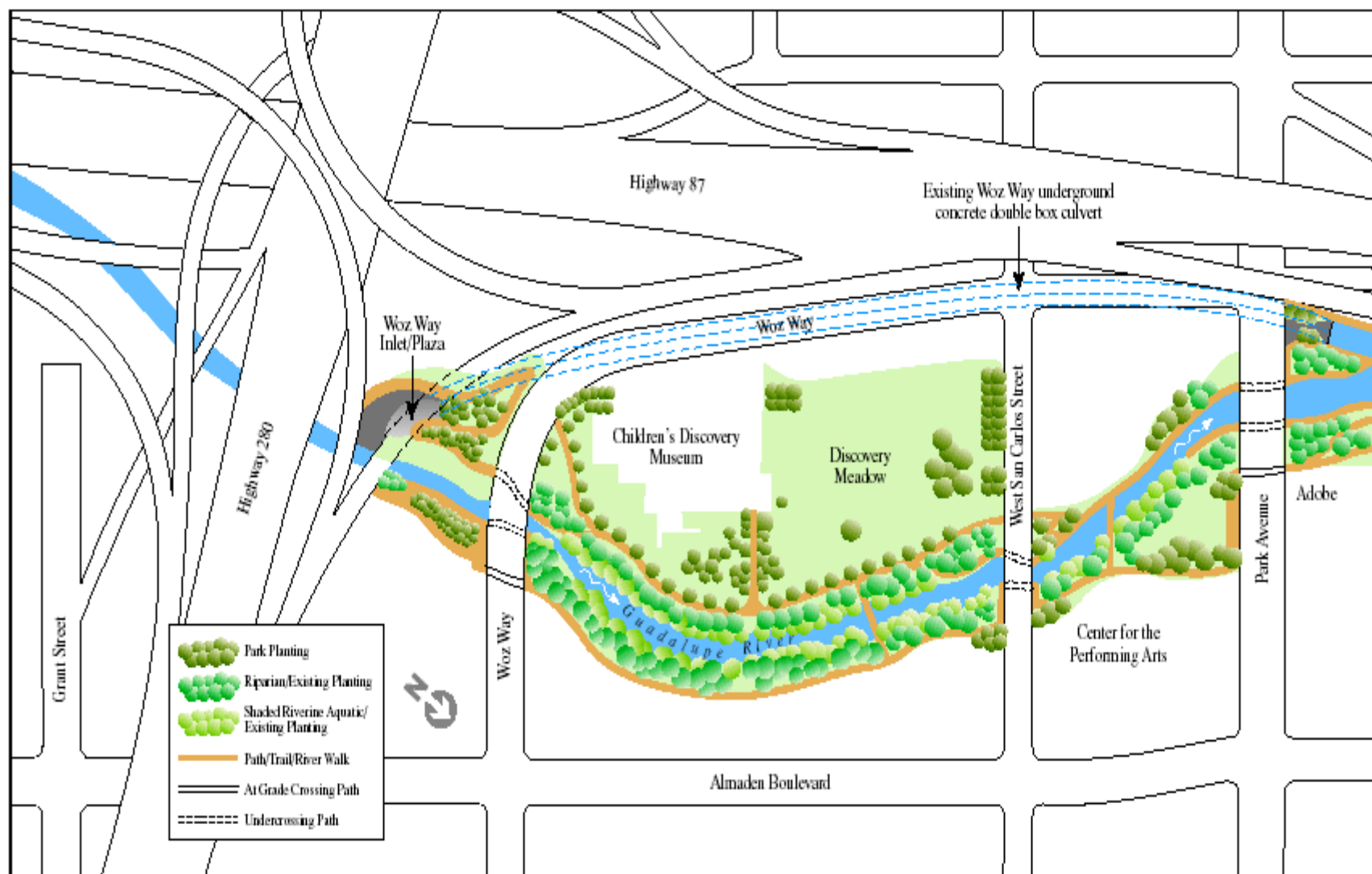


Contract 3B: Park Avenue Looking Downstream



Contract 3B: Looking Upstream from San Fernando Street to Park Ave.





Reach 3C

(Woz Way to Grant Street)

No Flood Modifications

(Park Avenue to Woz Way)

Contract 3C: Beneath I-280 Looking Upstream



Contract 3C: Beneath I-280 Looking Upstream



Contract 3C: Woz Way Inlet Structure



Contract 3C: Woz Way Looking Upstream



Contract 3C Phase 3: Flood Training Wall Alignments



Contract 3C, Phase 3: New Sheetpile Floodwall Near Delmas Neighborhood



Contract 3C, Phase 3: New Sheetpile Floodwall prior to Fencing Fabric



Contract 3C, Phase 3: New Floodwall Beneath I-280 at Almaden Avenue



Contract 3C: Stone Veneer Faced Floodwall with Bladder Dam Container



Contract 3C, Phase 3: Trial Run Bladder Dam Installation at Almaden Avenue



Contract 3A: Chinook Salmon at USGS Weir - St. John Street



Contract 3A: Chinook Salmon at USGS Weir - St. John Street





Valley Water

Clean Water • Healthy Environment • Flood Protection