

Project Milestones

Permanente Creek Flood Protection Project

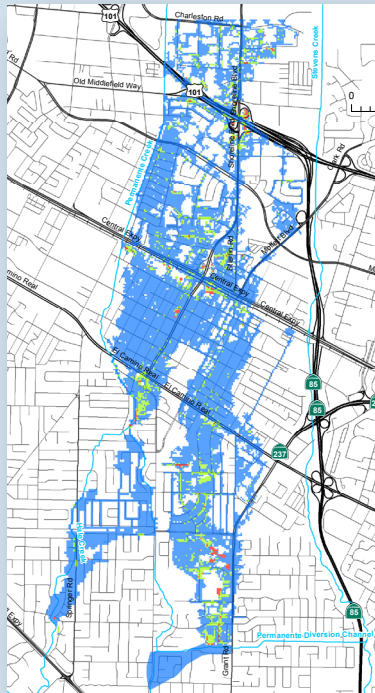


2000

Established the project scope, secured project funding, and identified a variety of flood protection alternatives to evaluate. The project began with 26 alternatives, each with different elements such as floodwalls, detention basins, etc.

Milestones

- Clean, Safe Creeks and Natural Flood Protection parcel tax passed by voters; included the Permanente Creek Project (**Nov. 2000**)



100-year floodplain map, which shows an estimate of \$54 million in damager from flooding.



Permanente diversion flooding in Mountain View (March 1983).

2001 – 2007

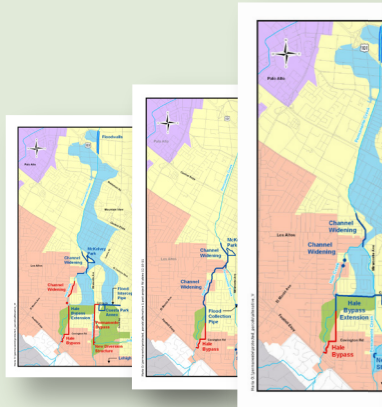
Evaluated the alternatives and collected public input to identify the alternative that best met the project scope and reflected community values.

Milestones

- First public meeting (**Jan. 2002**)
- Permanente Creek Task Force established (**2003 – 2010**)
- Permanente Creek Executive Committee established (**2007**)
- Scoping meetings (**May 2007**)



Scoping meeting at Mariano Castro Elementary School in Mountain View (May 2007).



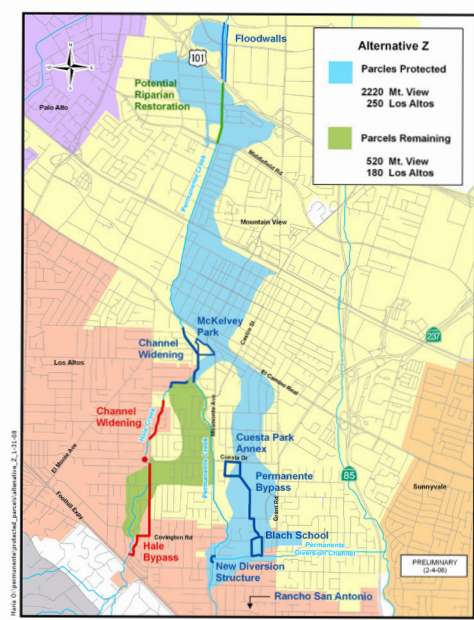
26 alternatives were evaluated. The alternatives were narrowed and the top option was selected.

2008 – 2009

Developed the planning study report and identified the final recommended alternative. The final alternative included six elements; floodwalls, channel widening, and four detention basins at McKelvey Park, Rancho San Antonio County Park, Cuesta Annex and Blach School.

Milestones

- Water district board approved the planning study report (**Sept. 2008**)
- Mtn. View City Council approved the detention basin at Cuesta Annex (**Dec. 2008**)
- Public meetings (**March/April 2009**)
- Public Hearing for the Draft EIR (**Oct. 2009**)



2010 – 2013

Developed the design for the selected alternative and began discussions with the permitting agencies. The project was further evaluated and refined to incorporate feedback from the community, partners and permitting agencies, which included removing two detention basin elements at Cuesta Annex and Blach School.

Milestones

- Blach School Board decided not to allow use of their site for flood detention (**Jan. 2010**)
- Water district board certified the Final EIR and approved the final alternative (**June 2010**)
- 13 design workshops with the community (**2010 – 2013**)
- Subsequent EIR scoping meeting (**June 2011**)
- Updated project hydrology (**Nov. 2011**)
- Project funding extended under the Safe, Clean Water and Natural Flood Protection parcel tax passed by voters (**Nov. 2012**)
- Water district Board certified Final Subsequent EIR (**Nov. 2012**)
- County Housing, Land Use, Environmental and Transportation Committee (HLUET) approved Rancho San Antonio flood detention design and recommended for full board approval (**June 2013**)
- Santa Clara County Board of Supervisors approved use of Rancho San Antonio County Park for flood detention (**June 2013**)
- Mtn. View City Council approved flood detention at McKelvey Park (**July 2013**)

2014 – 2015

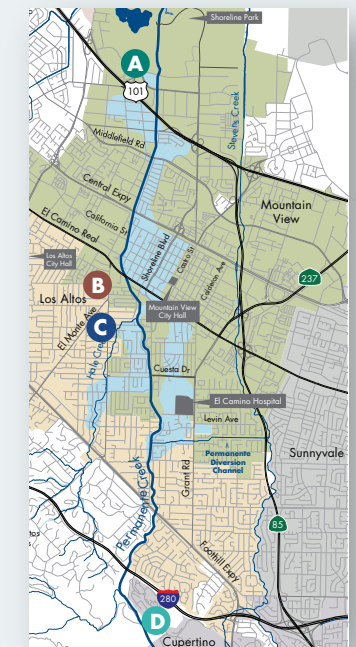
Refine the final design and work with the permitting agencies. The final design includes four elements; floodwalls, channel widening, and two detention basins at McKelvey Park and Rancho San Antonio County Park.

Milestones

- Water district submitted Joint Aquatic Resources Permit Application (JARPA) to the U.S. Army Corps of Engineers (**Sept. 2013**)
- Water district submitted revised JARPA (**April 2015**)
- Received Regional Water Quality Control Board Admin draft certification (**April 2015**)
- Received complete notification of Streambed Alteration Notification from CA Fish & Wildlife Service (**May 2015**)
- Received Draft Streambed Alteration Agreement from CA Fish & Wildlife (**Oct. 2015**)
- Received Draft Water Quality Certification from Regional Water Quality Control Board (**Dec. 2015**)
- Mtn. View City Council approved the final plans and specifications for McKelvey Park (**Jan. 2016**)
- Acquire permits from all regulatory agencies (*in progress*)

2016– 2018

Construct the project elements. Dates are dependent on permit acquisitions.



The project design was refined.

- B** McKelvey Park detention basin **January 2017 – March 2019**



- A** Floodwalls and **C** channel widening **April 2017 – December 2018**



- D** Rancho San Antonio County Park detention basin **December 2016 – December 2018**



Artist renditions of the final project design shown in photos.