

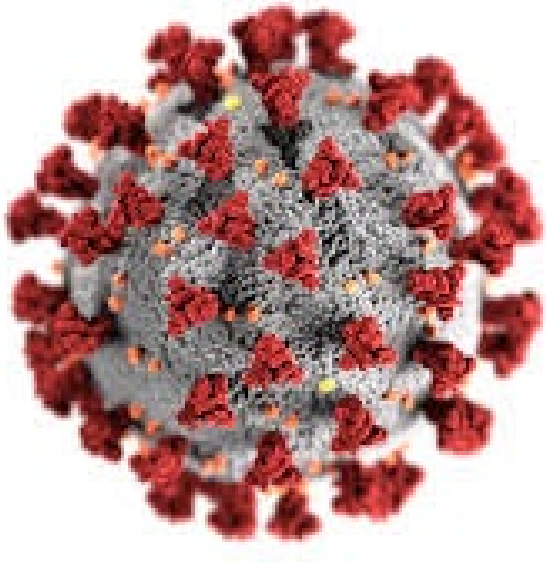
State of the Valley's Water

Presented by: Kirsten Struve, Assistant Officer
Water Utility - Santa Clara Valley Water District



2020 – A year of challenges, changes and community

Challenges of COVID-19



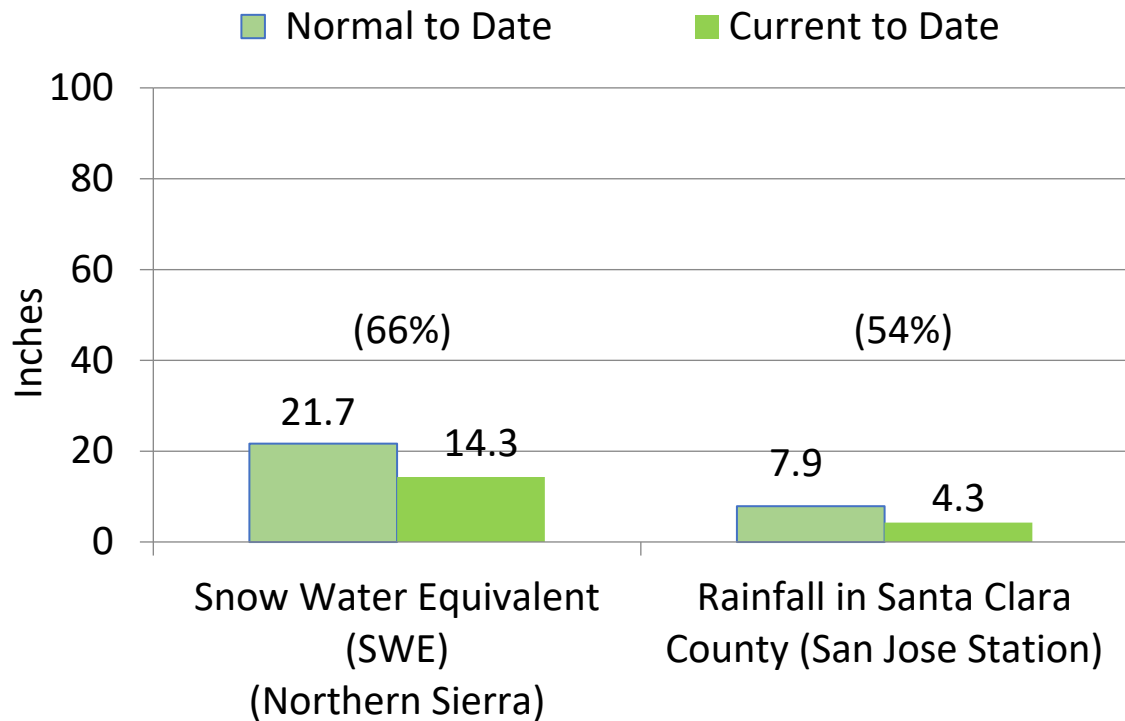
Opportunity to develop our landscaping community, stronger than ever before



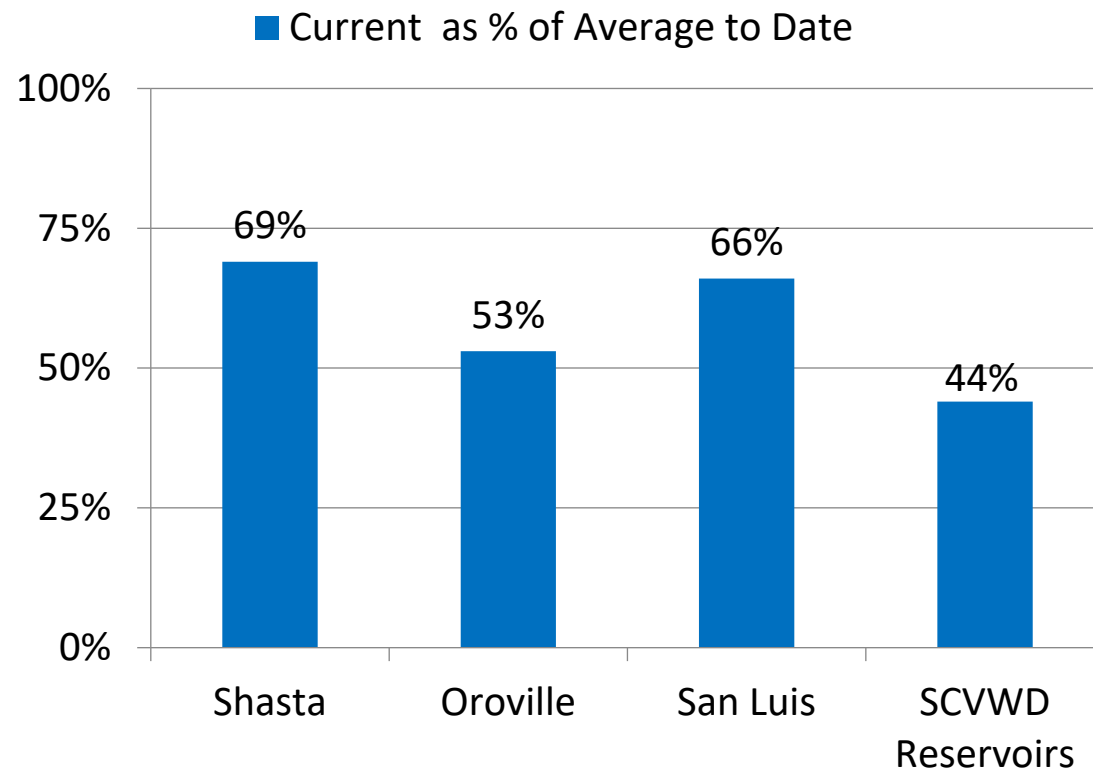
Early 2021 Hydrologic and Reservoir Conditions

HYDROLOGIC CONDITIONS BELOW AVERAGE

Hydrology
As of February 2021



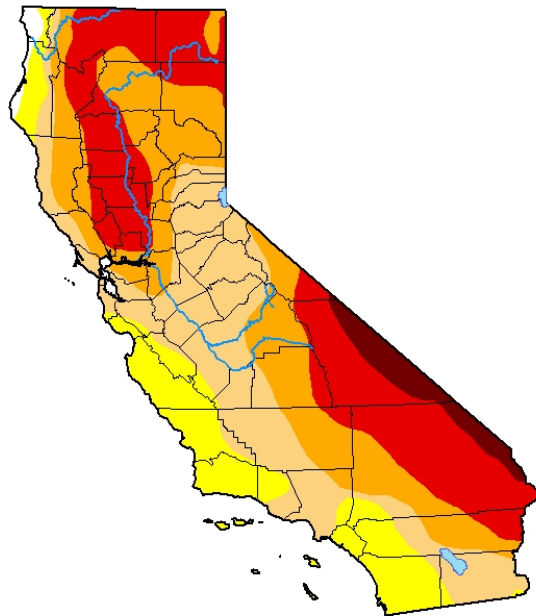
Reservoir Storage
As of February 19, 2019



2021 Initial Local Outlook

U.S. Drought Monitor California

February 16, 2021
(Released Thursday, Feb. 18, 2021)
Valid 7 a.m. EST



Intensity:

- None
- D0 Abnormally Dry
- D1 Moderate Drought
- D2 Severe Drought
- D3 Extreme Drought
- D4 Exceptional Drought

The Drought Monitor focuses on broad-scale conditions. Local conditions may vary. For more information on the Drought Monitor, go to <https://droughtmonitor.unl.edu/About.aspx>

Author:

David Miskus
NOAA/NWS/NCEP/CPC



droughtmonitor.unl.edu

Water Shortage Contingency Plan Stages

Normal (Stage 1)
No water use reductions

Alert (Stage 2)
0-10% reductions

Severe (Stage 3)
10% -20% reductions

Critical (Stage 4)
20% -40% reductions

Emergency (Stage 5)
40% -50% reductions

Above 300,000 AF

250,000 – 300,000 AF

200,000 – 250,000 AF

150,000 – 200,000 AF

Below 150,000 AF

Projected
2021 EOY
Storage

End of Year (EOY)
Groundwater Storage

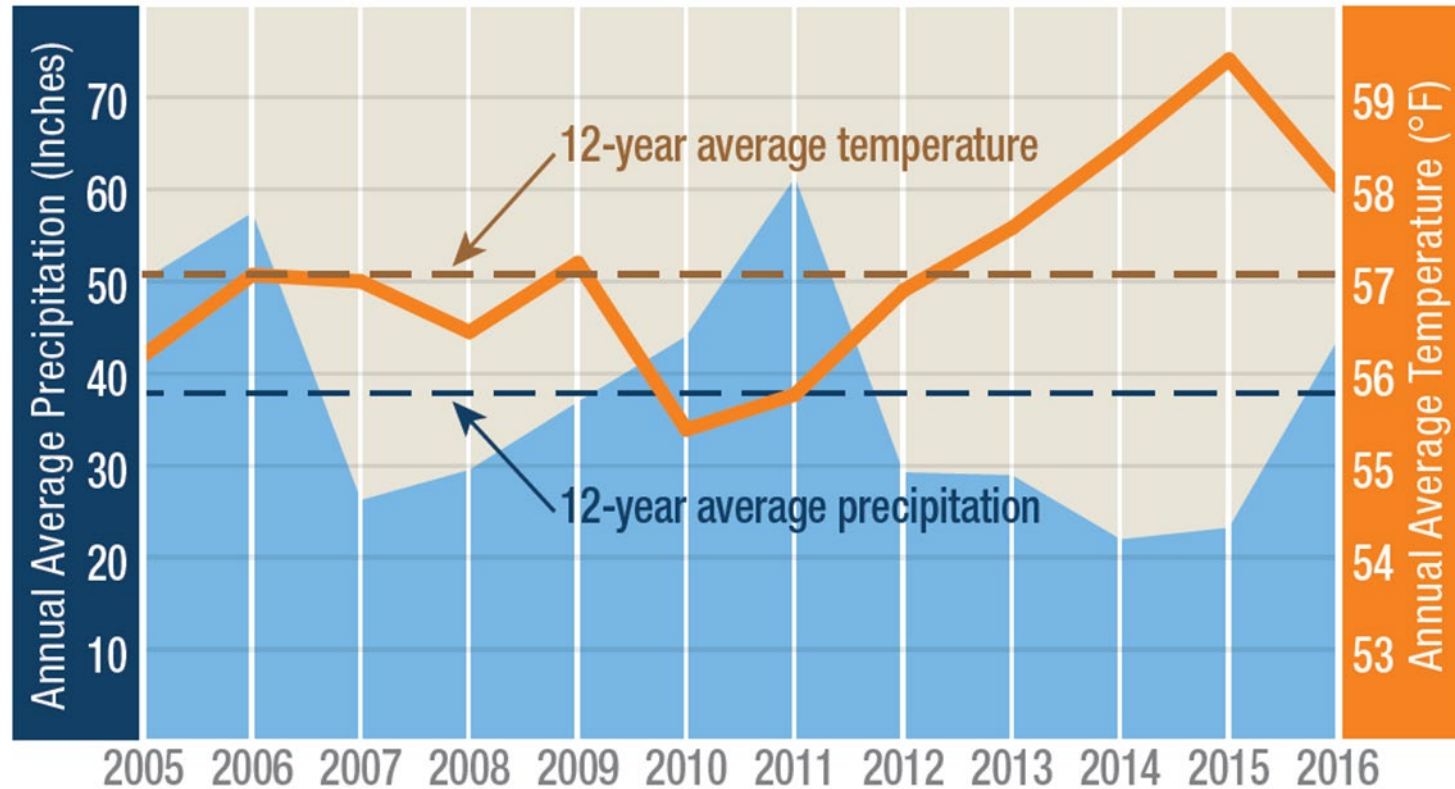
- 10% - Current SWP Allocation (35 TAF)
- TBD - Initial CVP Allocation
- ~340 TAF - Semitropic Storage
- ~331 TAF - End of 2020 Groundwater Storage

2020 Retail Water Use and Reductions

Need to Ensure “Conservation is a Way of Life”

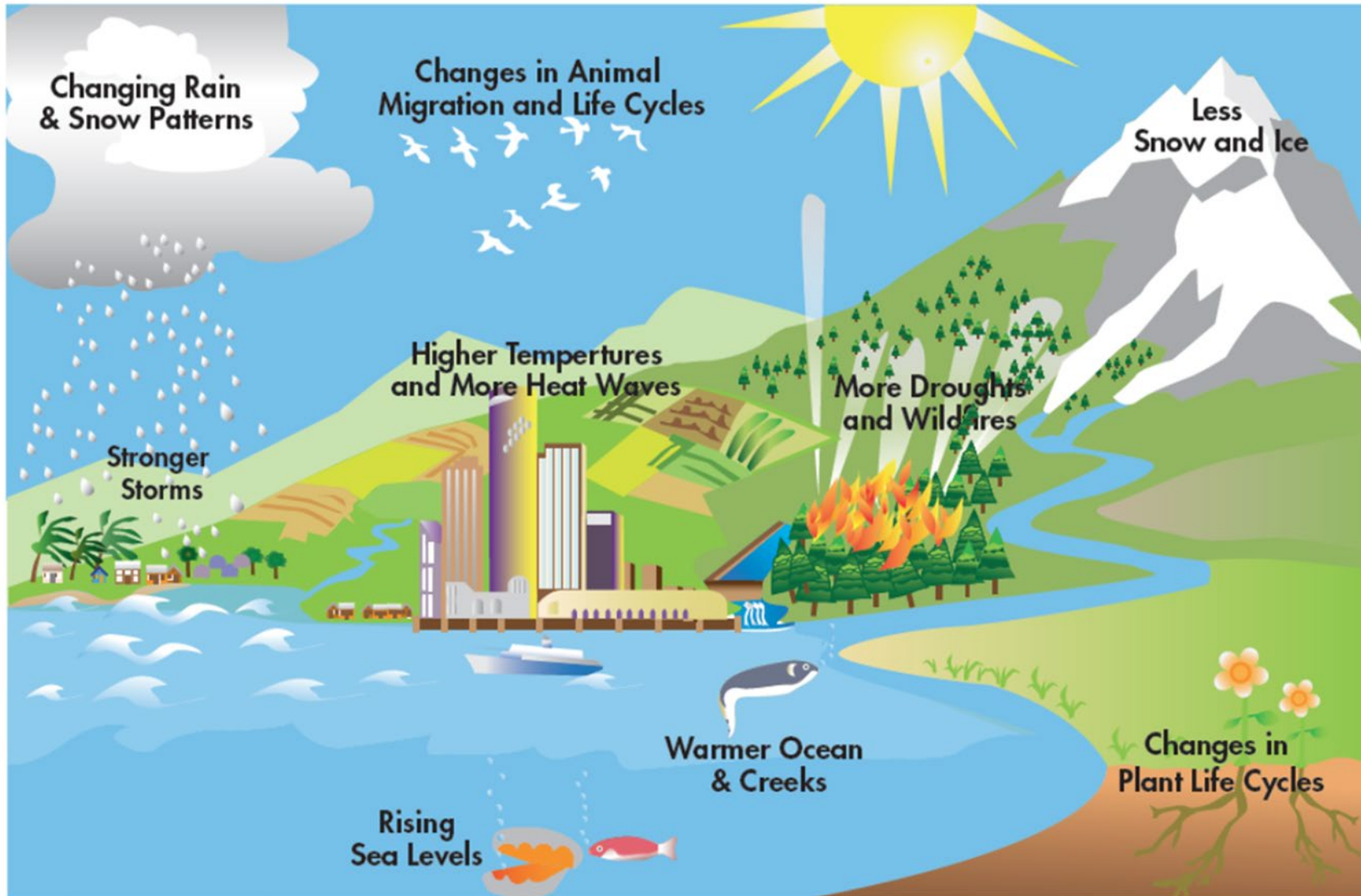
<u>2020</u>	<u>North County Ground water</u>	<u>South County Ground water</u>	<u>Treated Water</u>	SFPUC	SJWC Surface	<u>2020 Monthly Use</u>	<u>2020 Cumulative Use</u>
Jan	4,090	1,187	4,954	3,126	488	13,846	13,846
Feb	4,785	1,286	5,720	3,342	222	15,355	29,202
Mar	6,178	1,395	5,496	3,471	461	17,001	46,203
Apr	5,311	1,410	6,207	3,617	697	17,241	63,444
May	6,861	1,947	9,565	4,376	347	23,096	86,540
Jun	7,406	2,191	11,364	4,818	310	26,091	112,630
Jul	6,844	2,787	12,322	5,215	302.4	27,471	140,101
Aug	7,648	2,309	12,317	4,795	264.0	27,333	167,434
Sep	6,916	2,110	10,671	4,642	225.0	24,564	191,998
Oct	6,757	2,074	10,117	4,414	206.0	23,569	215,567
Nov	5,793	1,523	8,032	3,490	182.4	19,021	234,587
Dec	5,210	1,378	6,505	3,297	206	16,596	251,183
Jan to Current Totals	73,801	21,597	103,271	48,604	3,911	251,183	
%Savings by Source of Supply	14%	6%	19%	11%	50%	16%	

California's Historic 5 Year Drought



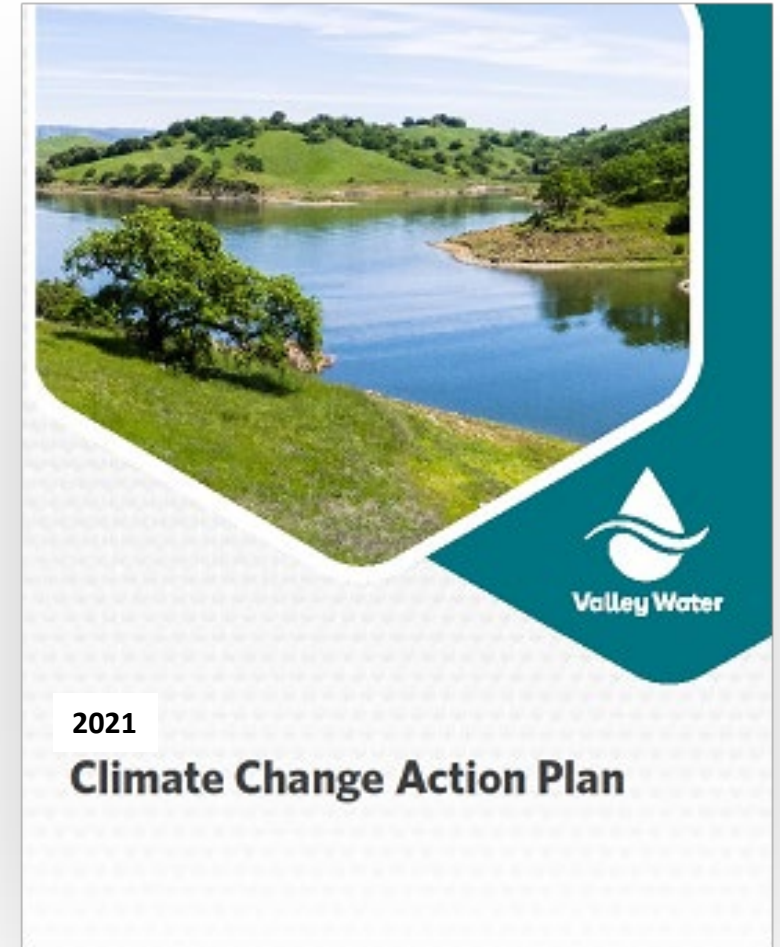
California has experienced near-record temperatures in recent years.
Source: California Department of Water Resources

Climate Change Impacts



Draft Climate Change Action Plan (CCAP)

- Framework for **mitigation and adaptation**
- Presents **goals and strategies**
- Proposes an **ongoing implementation program**





SCVWD Board of Directors Response

- June 13, 2017, the board extended the call for 20% reductions, but removed recommendations for mandatory actions by retailers and municipalities. They also recommended that many water waste restrictions be permanent and called for making water conservation a way of life. Please continue to make conservation a way of life.

State Transitions to Conservation as a Way of Life

Governor Executive Order

State Board **transitions away from monthly and annual percent reductions**

Move towards water use efficiency and water budgeting targets after 2020- performance based targets will be in place.



Making Water Conservation a California Way of Life

Implementing Executive Order B-37-16

FINAL REPORT
April 2017



QUESTIONS?





Valley Water

Clean Water • Healthy Environment • Flood Protection