

Upper Llagas Creek Flood Protection Project



Priority E: Provide flood protection to homes, businesses, schools and highways.

REACH 4 | PHASE 1



Most project construction activities will involve creek channel deepening and widening work as show above.

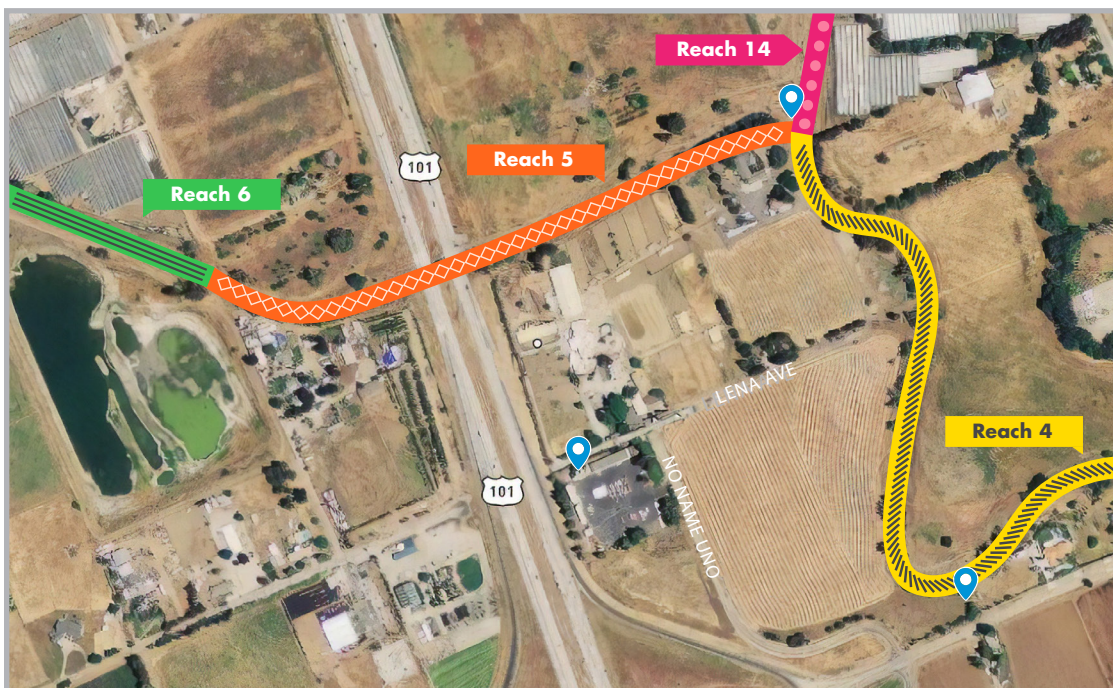


Reach 4 is part of Phase 1. It includes Llagas Creek from 1,000 feet downstream of Buena Vista Avenue to East Little Llagas Creek and Llagas Creek confluence in the City of Gilroy. 📍: construction access point

Creek channel improvements in Reach 4 will involve widening and deepening the channel with a cross-section that includes a meandering low flow channel, a stable creek channel with terraces approximately 30-feet in total width, and engineered banks. Improved channel banks will be revegetated with native trees and shrubs after the instream construction is complete. A maintenance road will be constructed for access along each side of the creek. An antiquated fish ladder will be removed downstream of Buena Vista Avenue. Features for aquatic habitat will be constructed in the channel.

What to expect in Reach 4 and 5: Additional truck traffic, noise and dust near project access points during construction hours. Work activities include stockpiling, along with materials and equipment staging at designated sites.

REACH 5 | PHASE 1

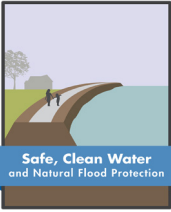


Reach 5 is part of Phase 1 and 2. It includes Llagas Creek from East Little Llagas and Llagas Creek confluence to U.S. 101 in the City of Gilroy. 📍: construction access point

Creek channel modifications and dimensions in Reach 5 will be similar to the ones planned for Reach 4. Reach 5 will be realigned to split water flow around a small island immediately upstream of the confluence with East Little Llagas Creek.

Much of the water flow will travel to the north of the island, increasing channel length. Grade control structures and features (i.e., large wood and boulder clusters) for aquatic habitat will be constructed within the channel.

Improved slopes of the creek channel will be revegetated, while maintenance roads will be built on both sides of the creek.

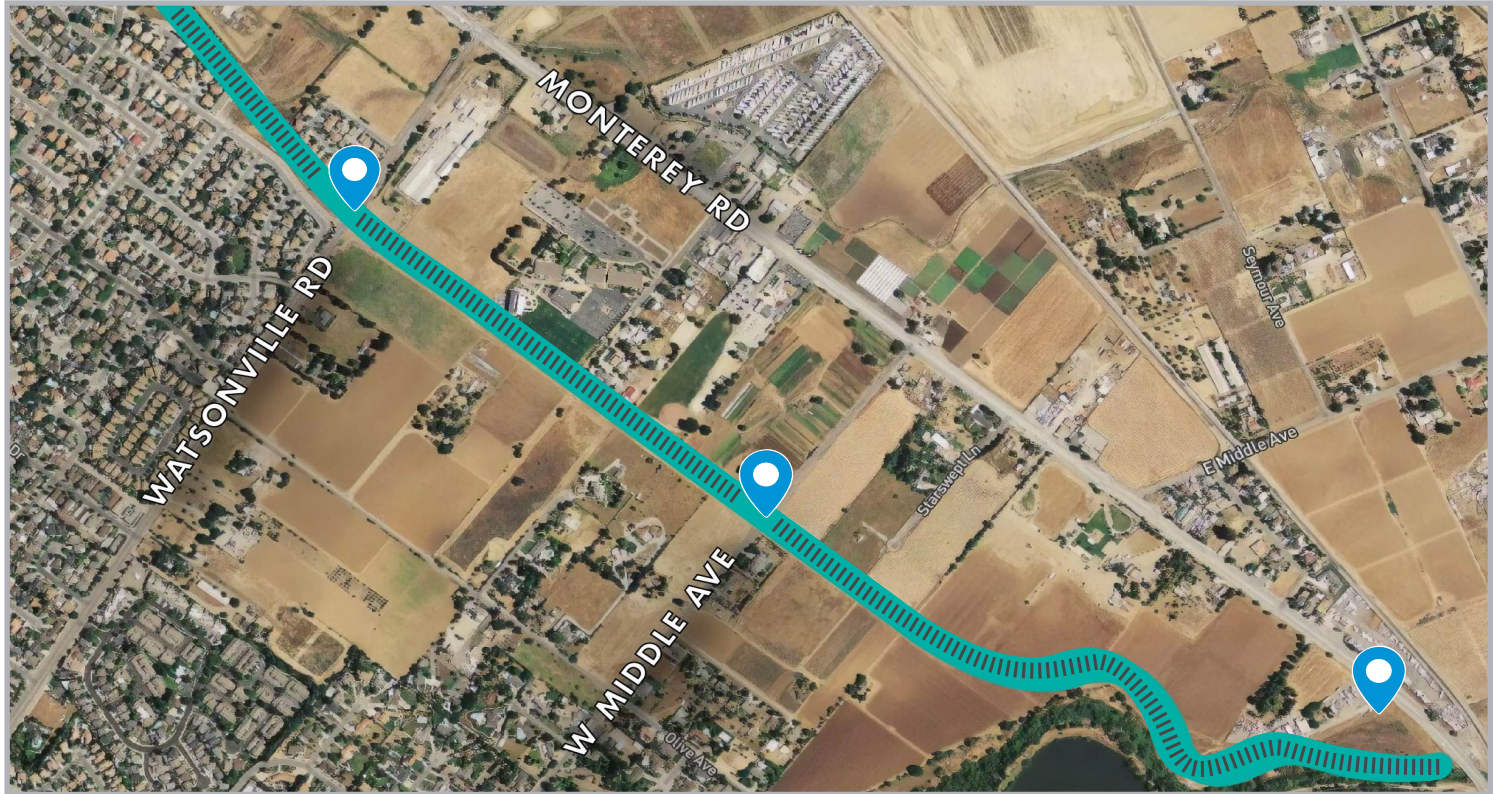


Upper Llagas Creek Flood Protection Project



Priority E: Provide flood protection to homes, businesses, schools and highways.

REACH 7a | PHASE 1



Reach 7a is part of Phase 1. It includes the creation of a new diversion creek channel from Monterey Road to just north of Watsonville Road in the City of Morgan Hill. : construction access point

A new creek channel will be constructed through agricultural fields. A short, .3-mile existing creek channel exists at the north end of the reach, upstream of Watsonville Road. A natural diversion channel of about 1.5 miles long will be excavated through the reach to divert water flows, after the completion of Phase 2 construction, from West Little Llagas Creek upstream of Watsonville Road to Llagas Creek downstream of Lake Silveira at Monterey Road. The existing bridges at Watsonville Road and West Middle Avenue will be unearthed. Like other reaches, a maintenance road will be constructed on both sides of the channel.

What to expect: Construction of the creek channel will require a lot of digging. Residents can expect to see additional heavy machinery, truck traffic, and haul trucks on the road. There will be stockpiling, staging of materials and equipment at designated sites. Additional noise, not to exceed the jurisdictional noise ordinance, and an increase in dust from construction activities are expected. The contractor will implement best management practices to minimize these construction activities.

CONTACT US

For more information, contact Neighborhood Liaison, Jose Villarreal at (408) 630-2879 or by email at jvillarreal@valleywater.org. Or use our **Access Valley Water** customer request and information system at <https://delivr.com/2yukx> to find out the latest information on Valley Water projects or to submit questions, complaints or compliments directly to a Valley Water staff person.



FOLLOW US



scvwd



valleywater



valleywater



Join our mailing list:
<https://delivr.com/2uz9z>

