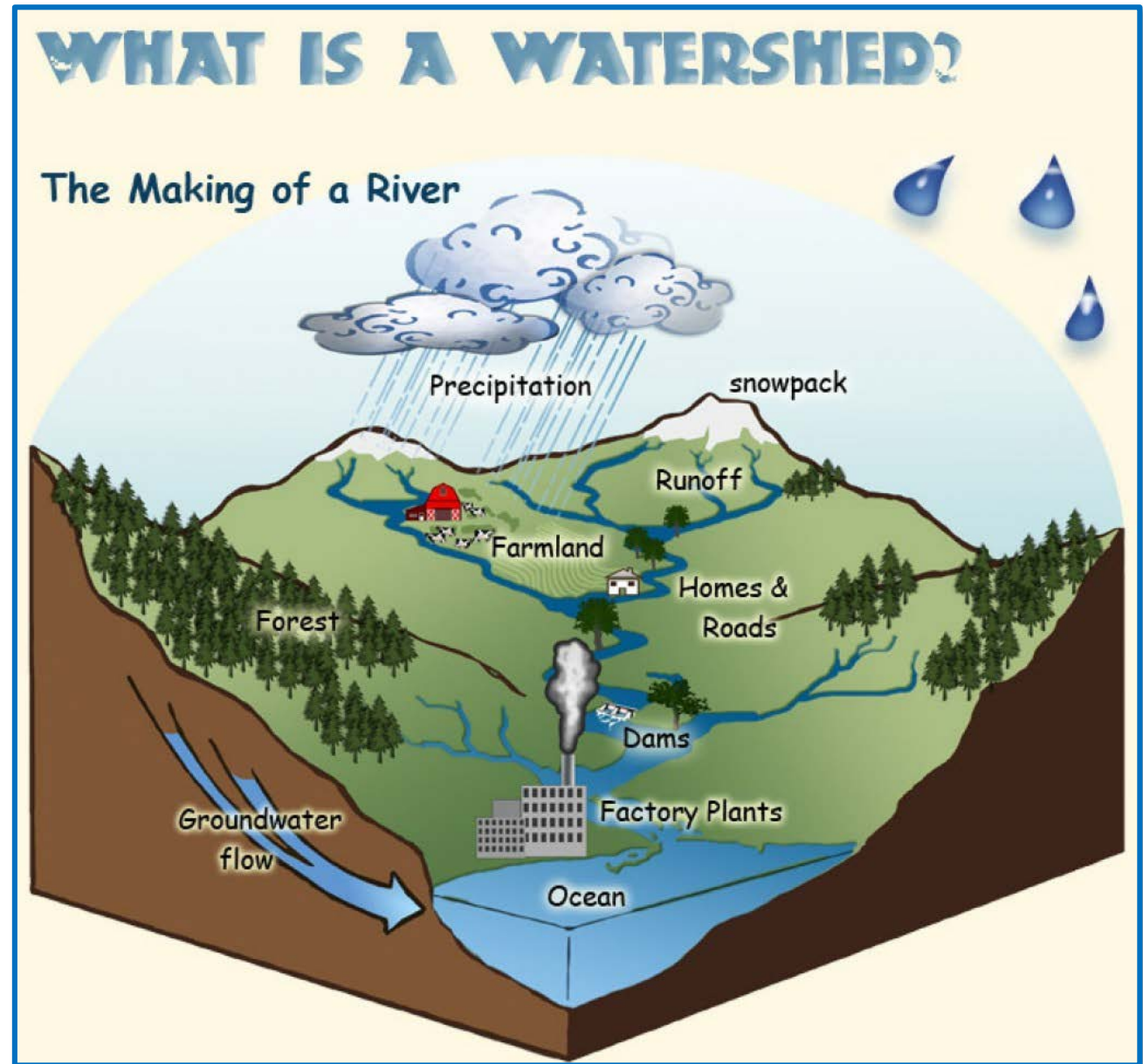


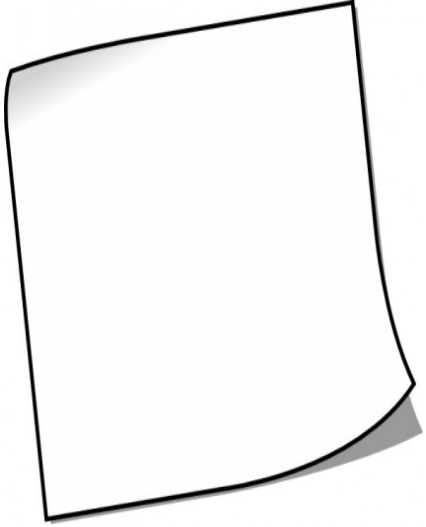


Watershed Maps

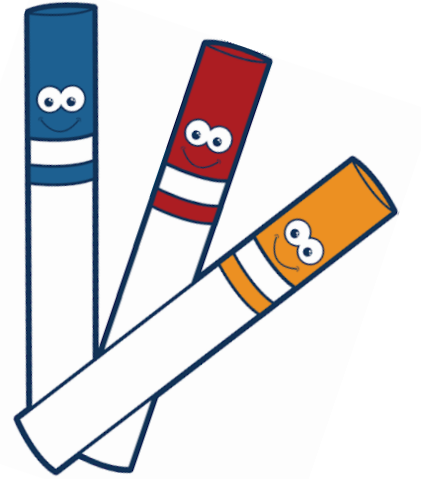
Presented by:
Education Outreach



Materials Required



- 1 pieces of plain scrap paper (8.5 X 11)
- Water-based markers (blue, brown, green, red, & orange)
- A bowl of water
- A plate to put your map on



WHAT IS A WATERSHED?

The Making of a River

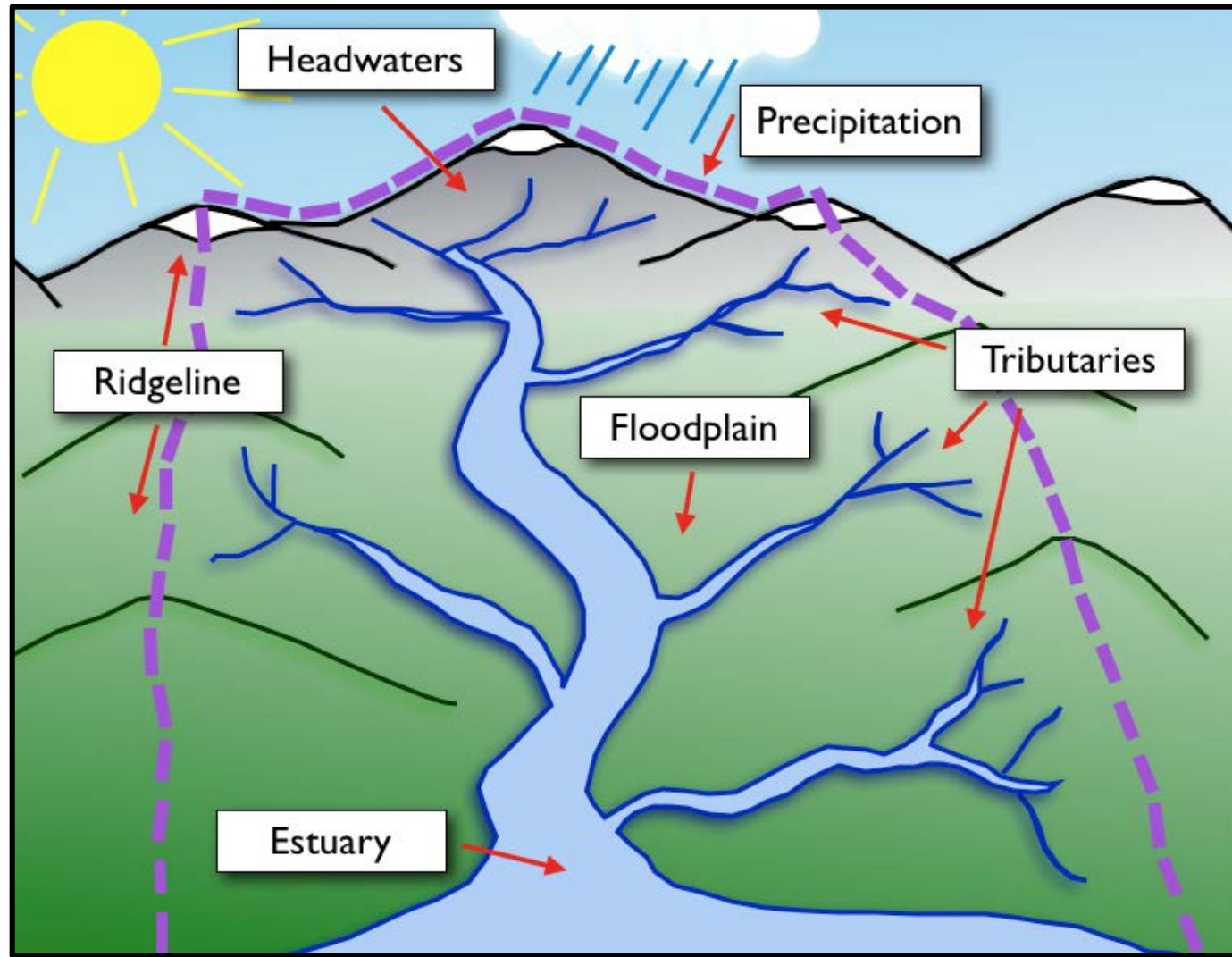


A WATERSHED is...

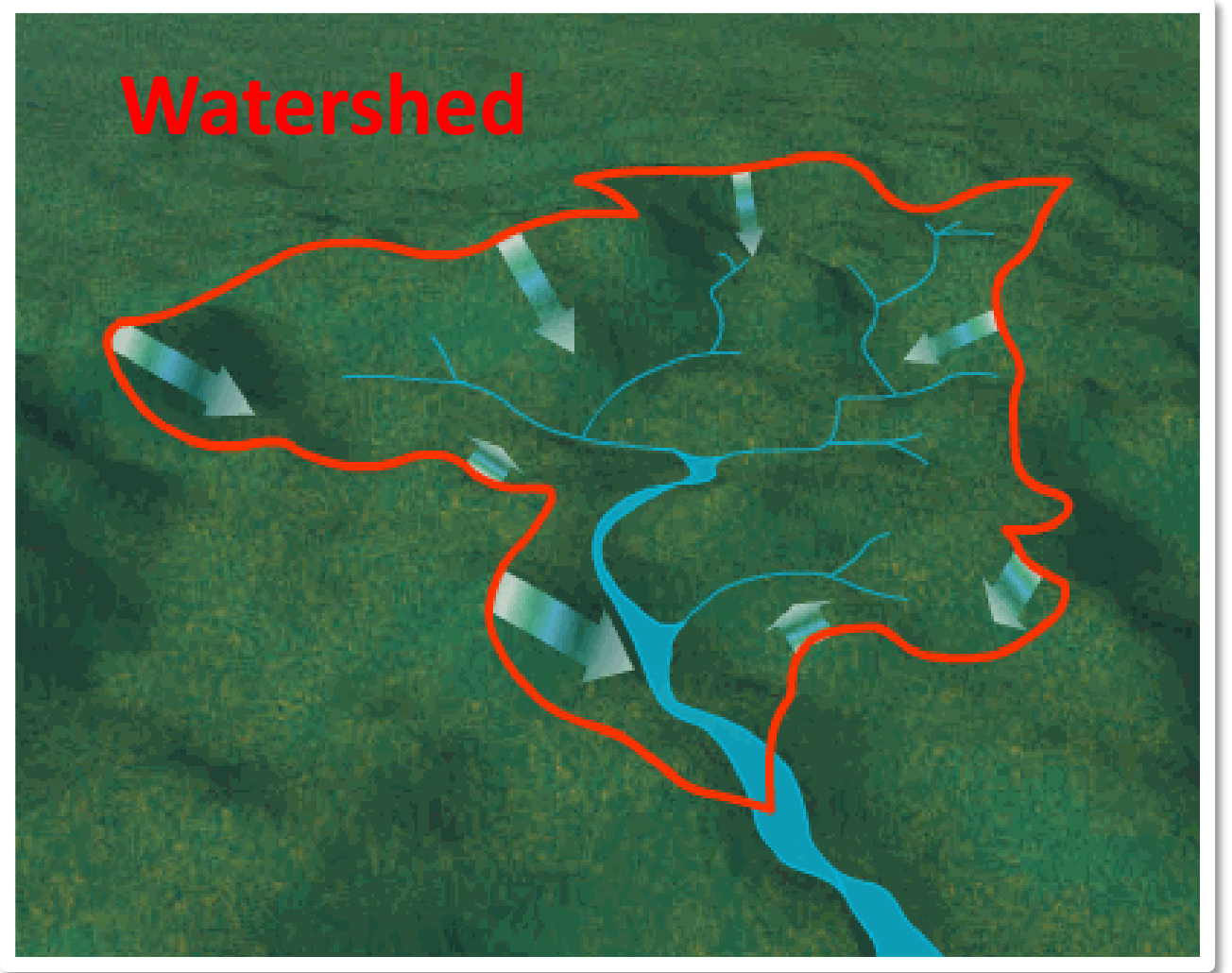
A basin, drainage or catchment.

An area of land drained by a river and its tributaries to a common outlet; a larger stream, lake, wetland, estuary or ocean.

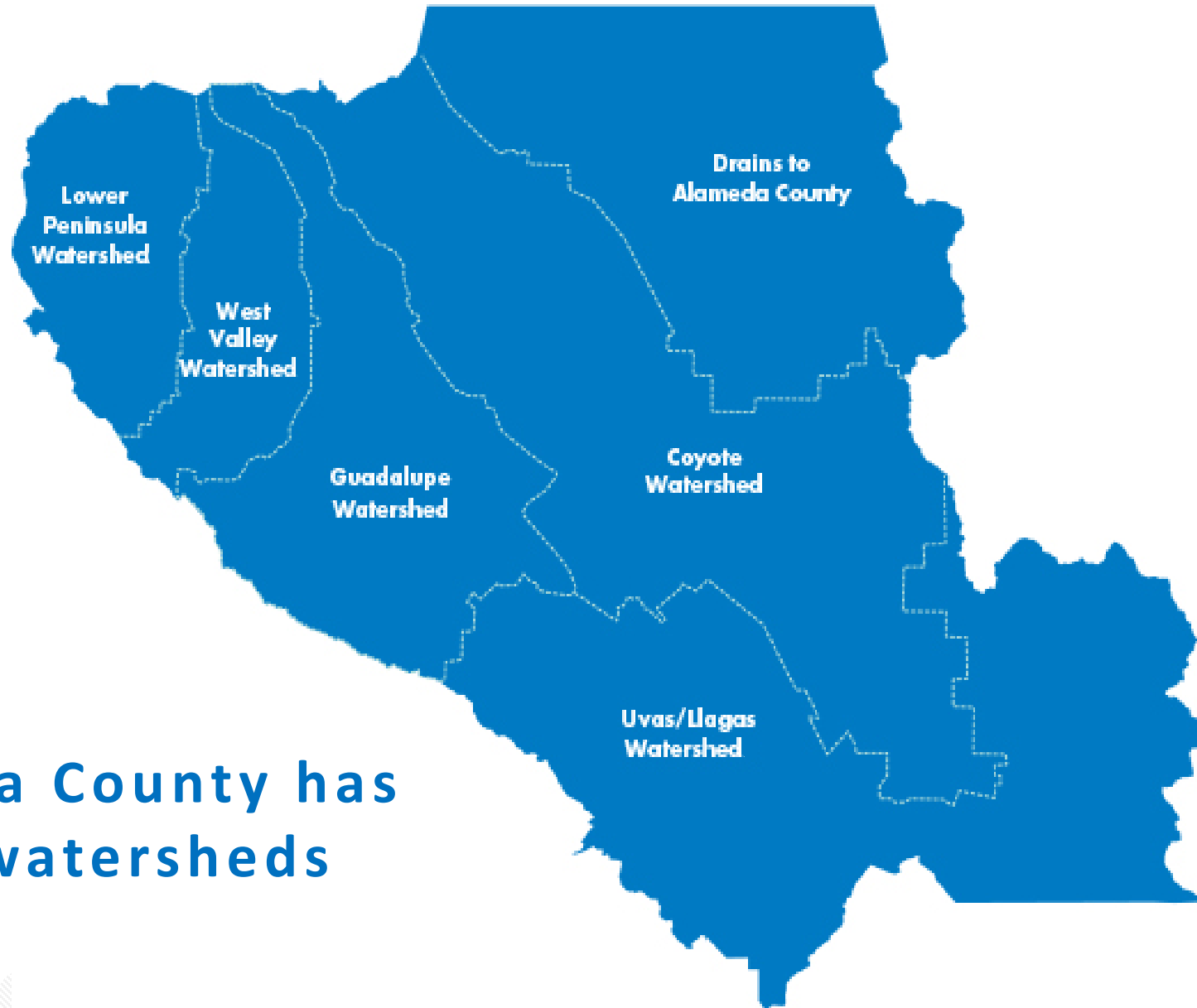
Watershed Maps



A **ridgeline** is the top edge of the mountain that divides one watershed from another.

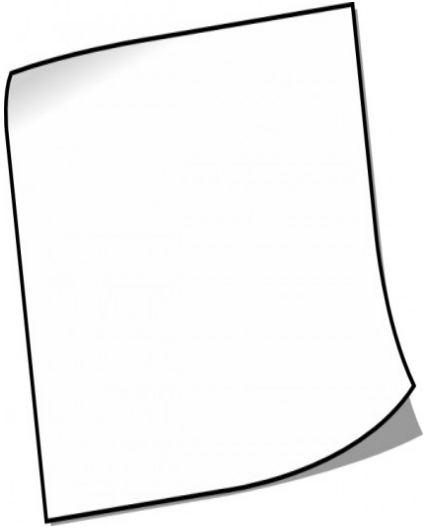


Santa Clara County

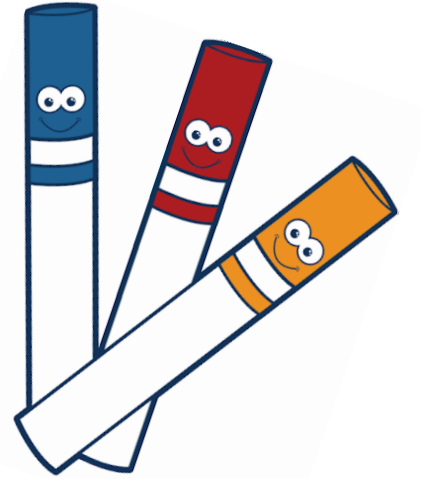


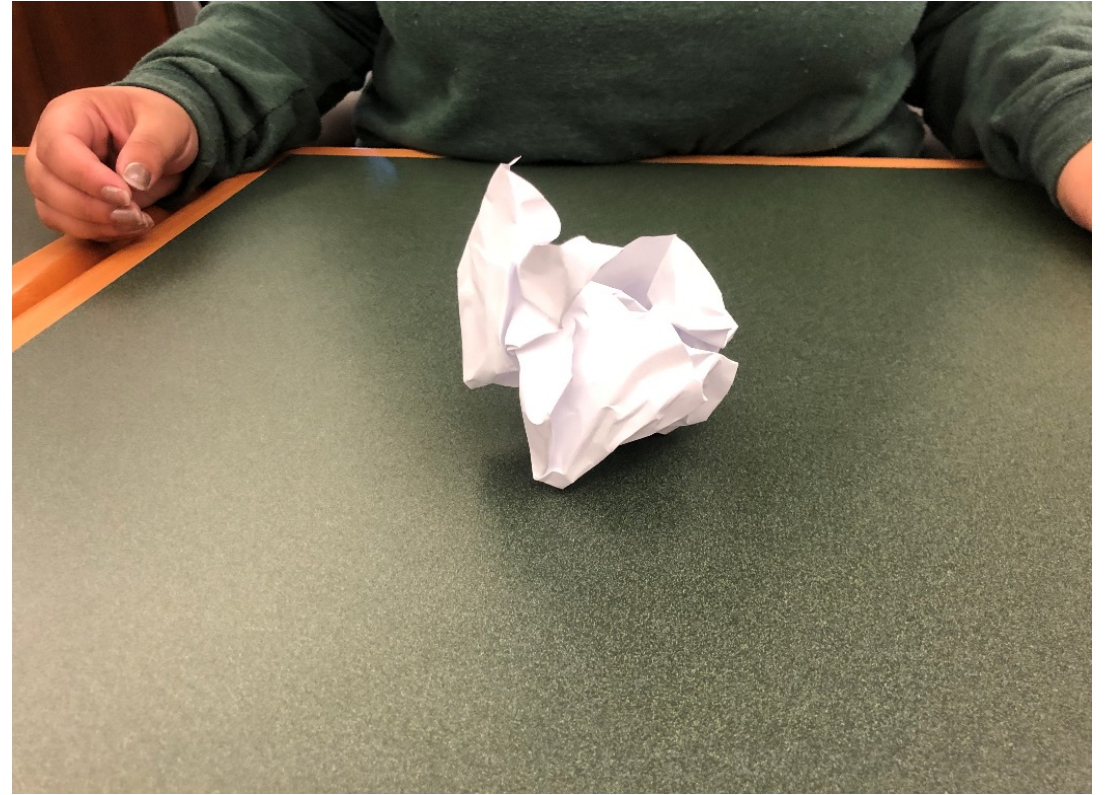
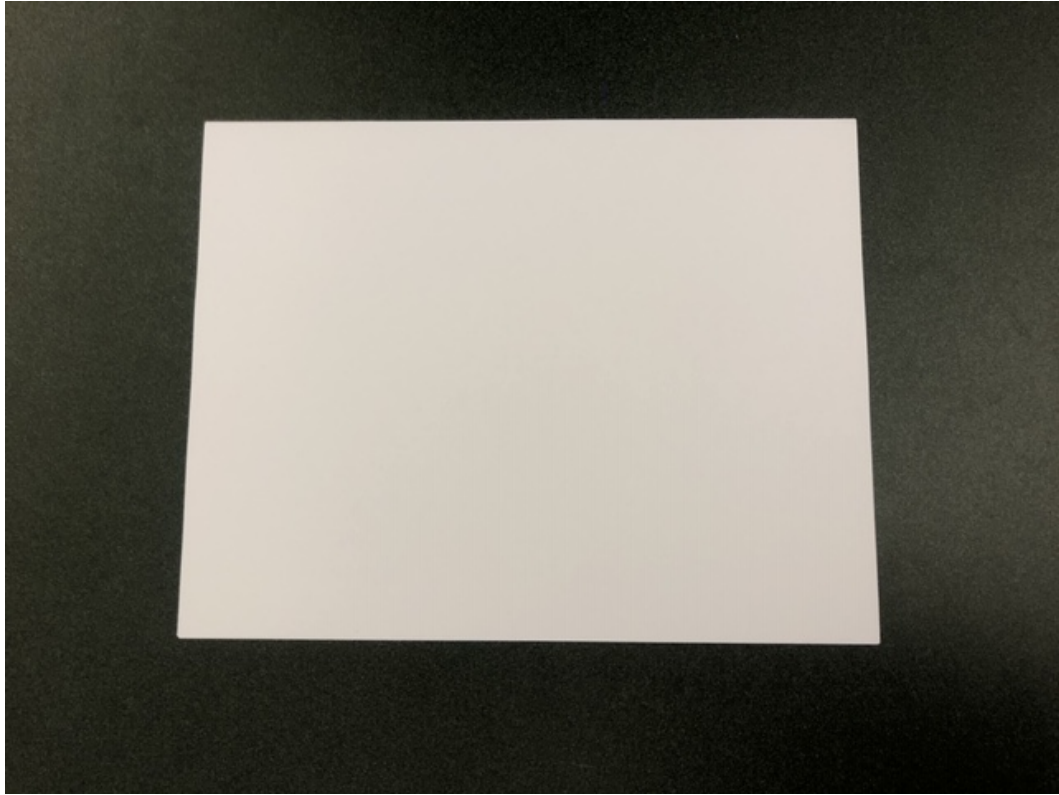
**Santa Clara County has
5 main watersheds**

Materials Required



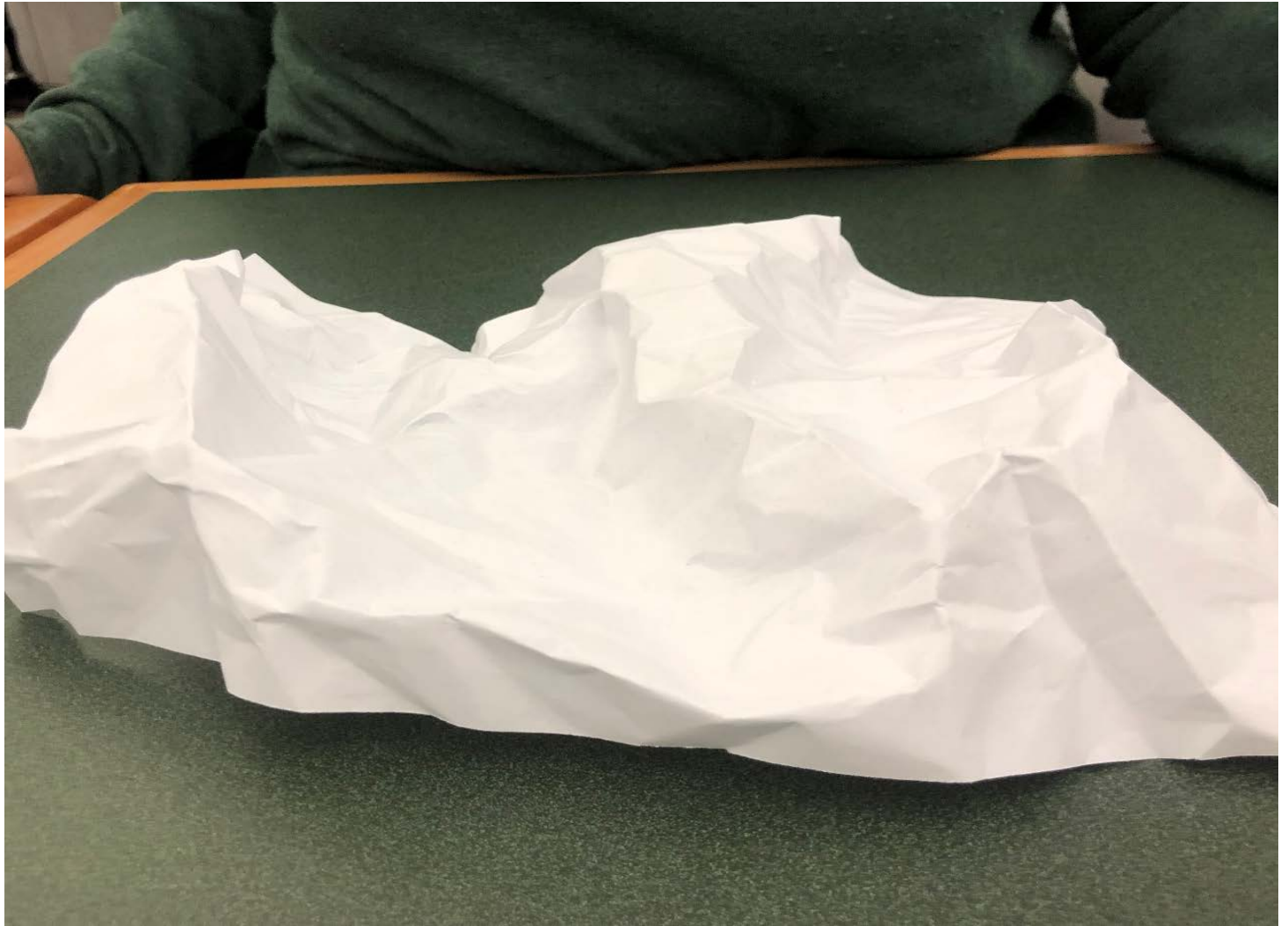
- 1 piece of plain scrap paper (8.5 X 11)
- Water-based markers (blue, brown, green, red, & orange)
- A bowl of water
- A plate to put your map on



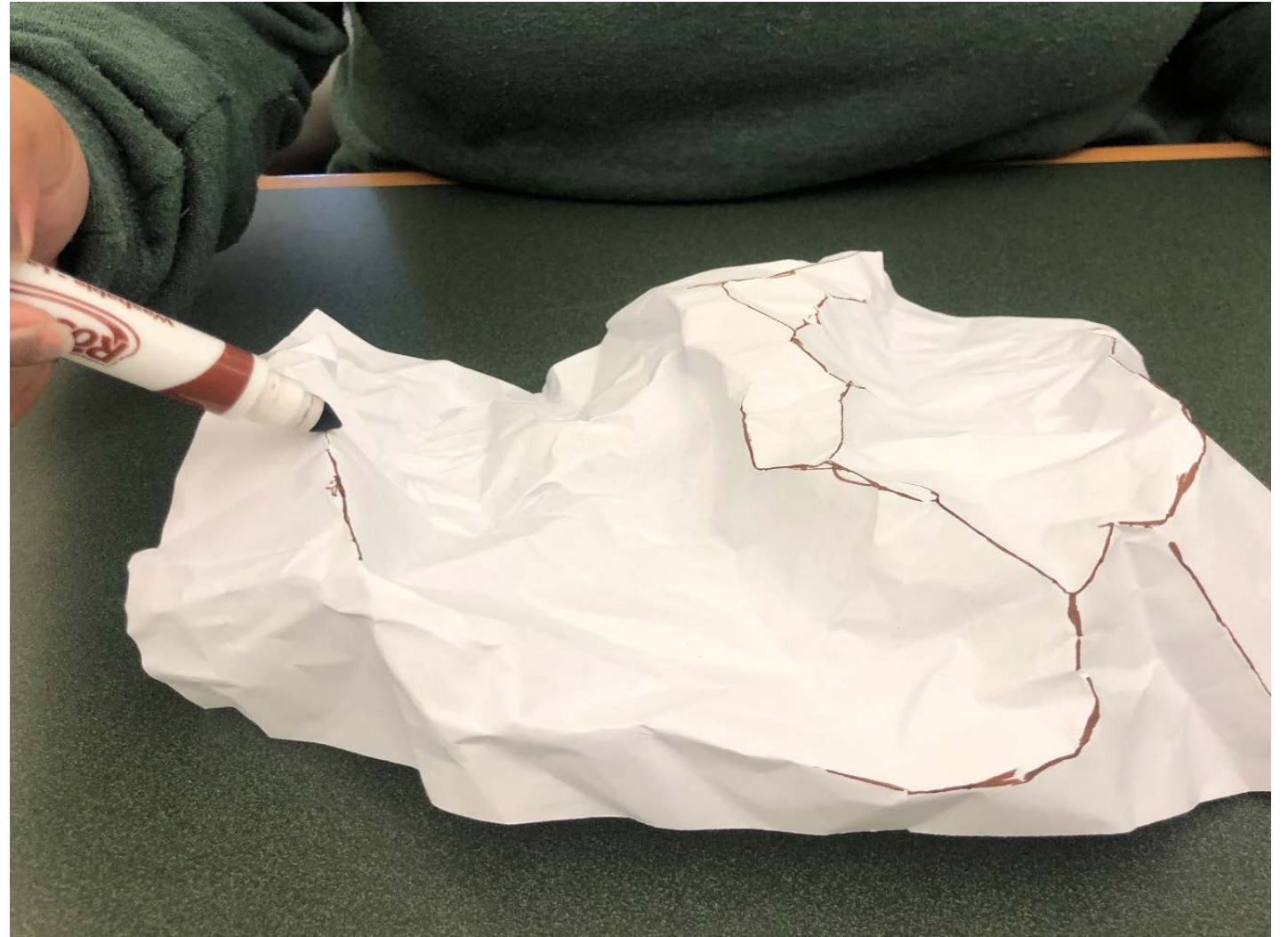


Step 1: Crumple up the paper

Step 2:
Unravel the
paper, but make
sure it's not
completely flat.



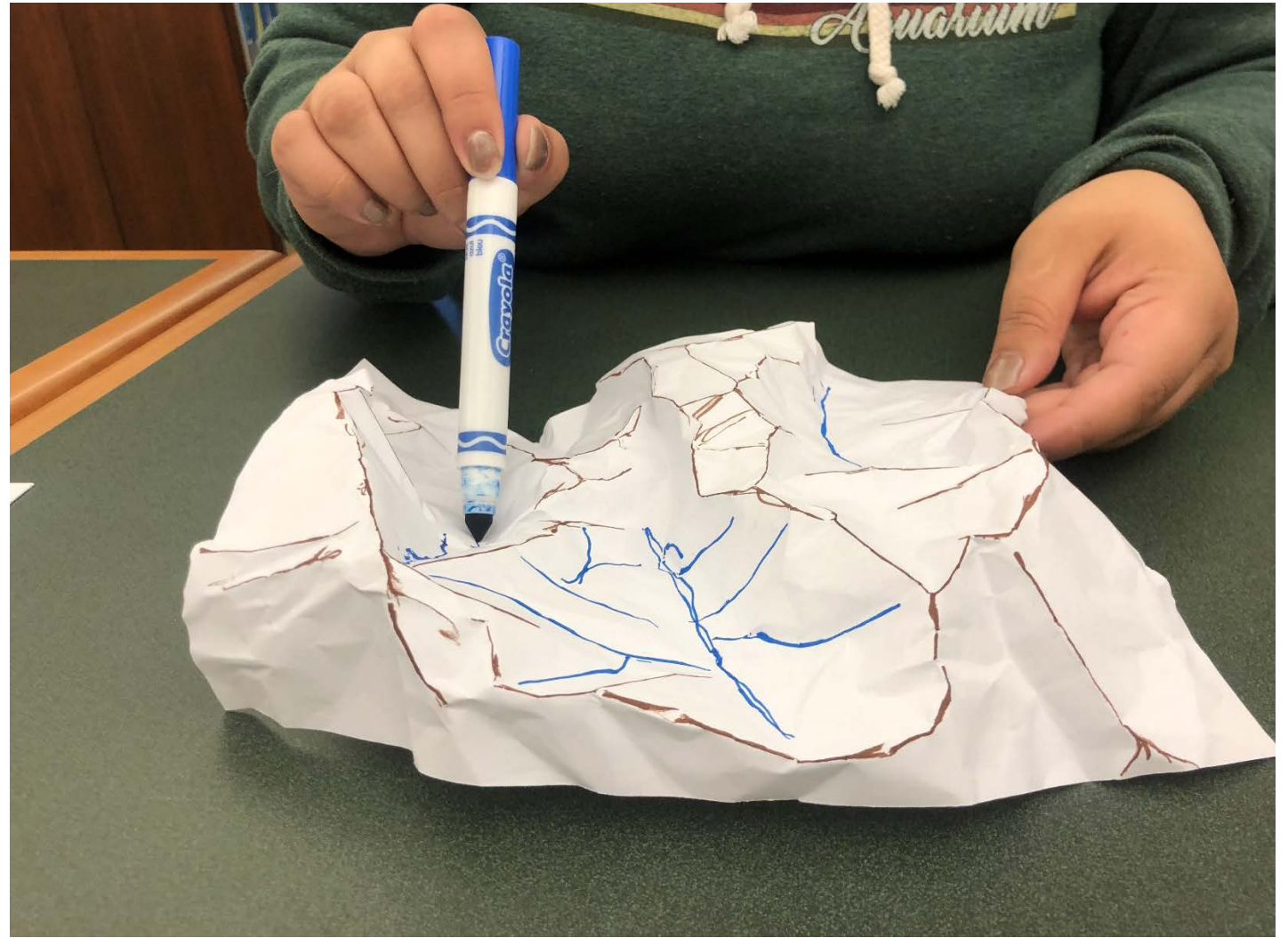
Step 3: Use a **brown** marker to mark the high places which are the **ridges** of the mountains.



Step 4:

Use a **blue** marker to mark where you predict water will flow.

Mark the low areas, and any streams that could come down from the mountains.



Step 5:

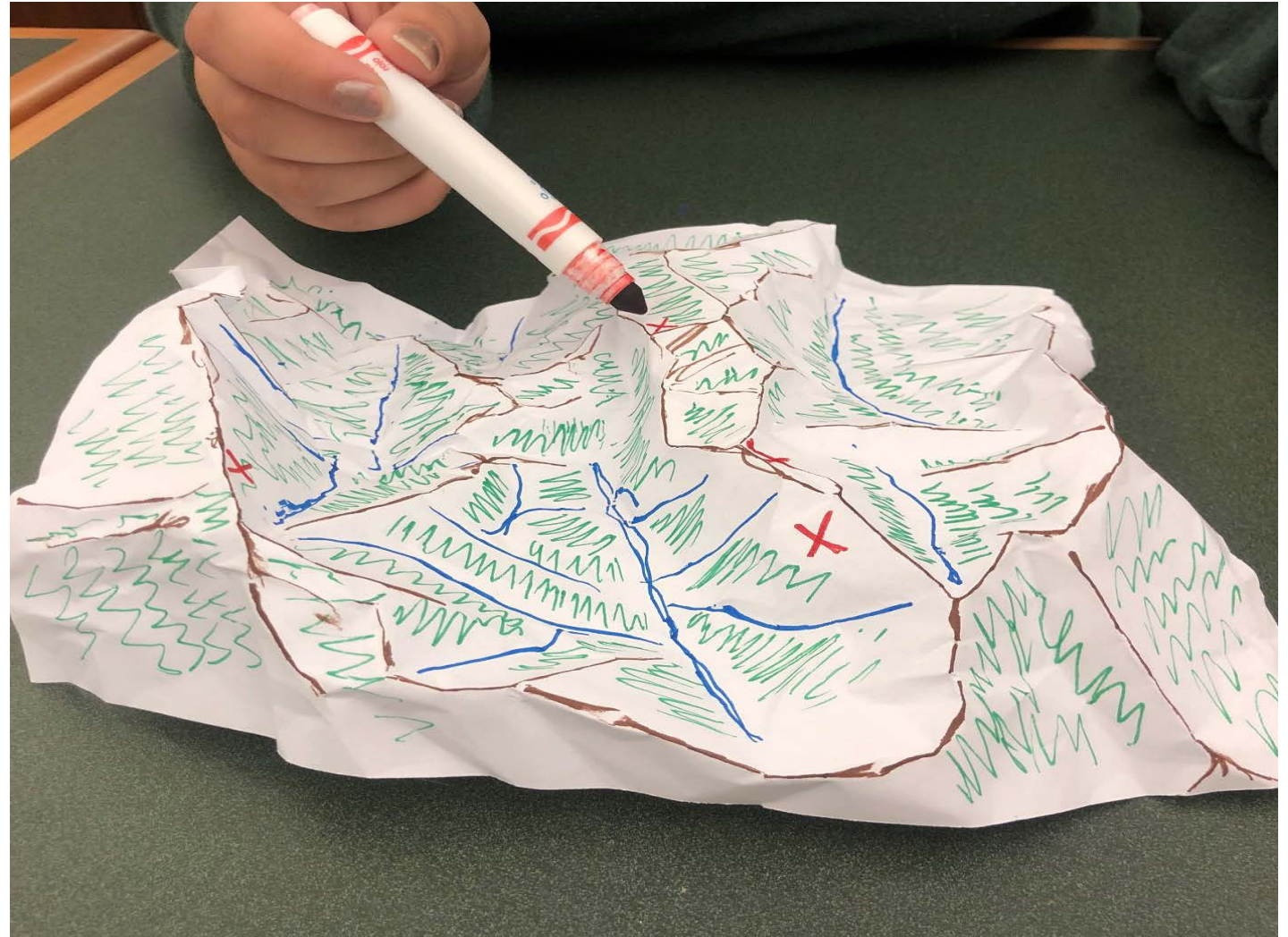
Add vegetation with your **green** marker.

Where do you think plants will grow? Close to water or far away?



Step 6:

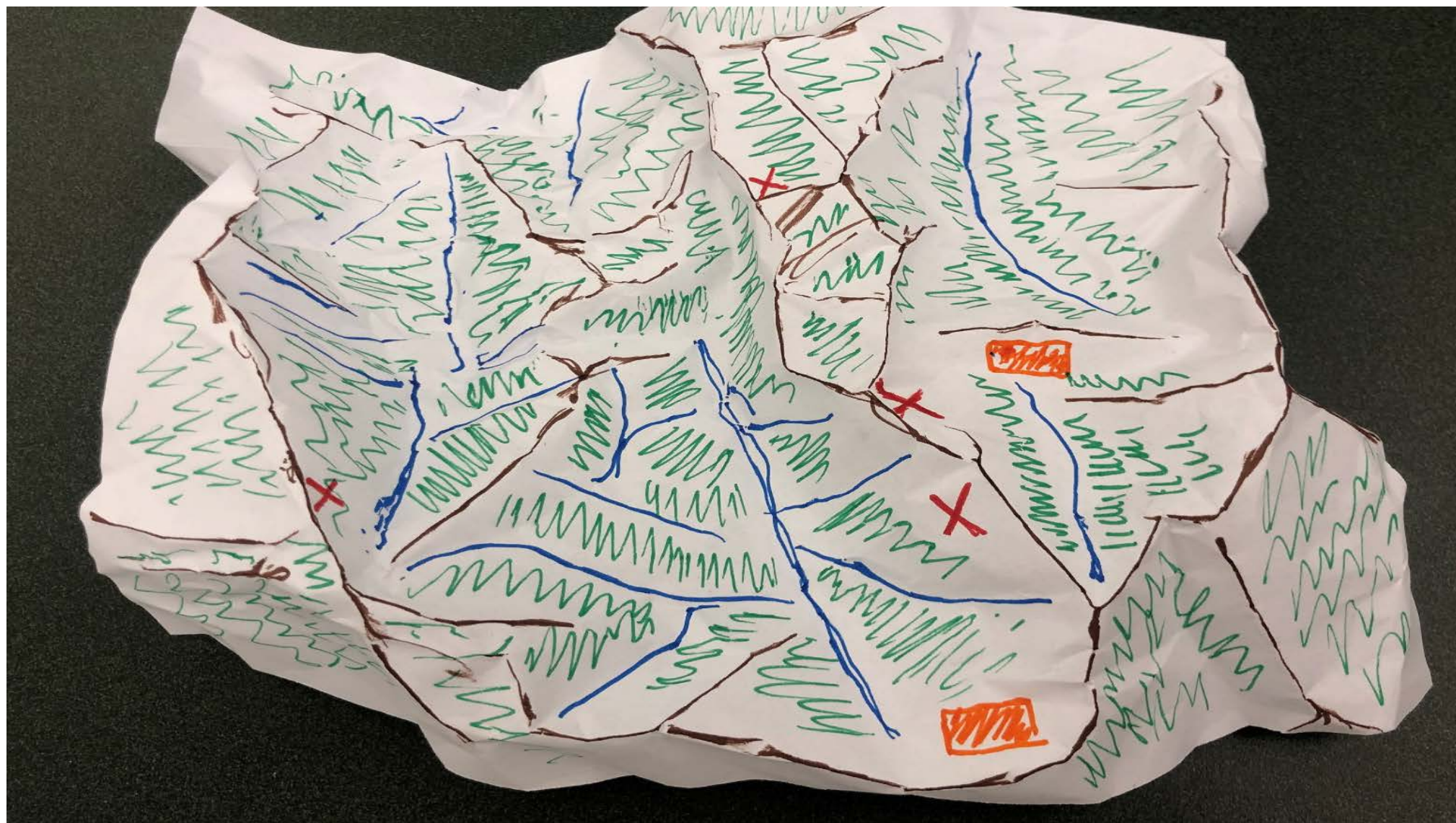
Where would you like to live? Put a red **X** where you would like your house to be and then add dots for other houses.



Step 7:

Our households produce trash that needs to be taken somewhere. Where should a landfill go? Use your **orange** marker to draw landfill sites.







Now you're going to sprinkle your maps with water to simulate rain. Pay close attention to where the water is flowing!



Did anyone decide to build their homes in an area that became flooded with water?

What happened to the orange squares that represented a landfill site?

Did you see any of the orange color traveling into the waterways? What could this represent?

Now that you have this information, what changes would you make to the placement of homes and landfills on your map?

**What do you
see in this
picture?**



REFUSE...reduce...reuse...recycle



10 WAYS TO UNPACKAGE YOUR LIFE!



Tip 2
Reduce the use of plastic bags for produce & bulk items.



Tip 5
Pack a waste-free lunch.



Tip 8
Say no to disposable straws.



Tip 3
Bring your own food container and utensils.



Tip 6
Bring your own cup.



Tip 9
Avoid heavily packaged foods.



Tip 1
Bring your own shopping bag.



Tip 4
Carry a reusable water bottle.



Tip 7
Slow down and dine in.



Tip 10
Share these tips with friends!



“Adopt A Creek” or join a clean up event!

Visit our Valley Water
website to learn more:

[https://www.valleywater.org/
learning-center/adopt-a-creek](https://www.valleywater.org/learning-center/adopt-a-creek)

Thank you!

Email us at

education@valleywater.org

Or mail us at

Education Outreach, Valley Water
5750 Almaden Expressway,
San Jose CA 95118





Valley Water

Clean Water • Healthy Environment • Flood Protection